

Converting Colors

CIELCh(74, 40.928, 7.805)

Have a look what the booklet for
CIELCh(74, 40.928, 7.805) contains.

CIELCh(74, 40.965, 7.867)	3
<i>Conversions</i>	4
<i>Details</i>	6
<i>Harmonies</i>	11
<i>Previews</i>	20
<i>Color Blindness Simulation</i>	23
<i>CSS Examples</i>	26

Color

CIELCh(74, 40.965, 7.867)

Conversions

Conversions Part 1

Format	Color
Hex	FE98AD
RGB	254, 152, 173
RGB Percent	100%, 60%, 68%
CMY	0.0027, 0.4028, 0.3205
CMYK	0.00, 0.40, 0.32, 0.00
HSL	348°, 99%, 80%
HSV	348°, 40%, 100%
XYZ	59.8291, 46.7039, 45.5369
YIQ	184.8920, 54.0510, 28.1550

Conversions

Conversions Part 2

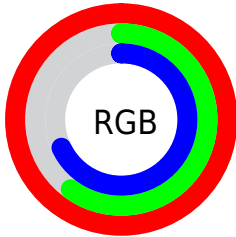
Format	Color
RYB	254, 152, 173
Decimal	16685229
CIELab	74.00, 40.58, 5.61
CIELCh	74, 40.965, 7.867
Yxy	46.7039, 0.3934, 0.3071
Android (android.graphics.Color)	4294875309 (0xFFFE98AD)
YUV	184.8920, -5.8628, 60.6077
Hunter-Lab	68.3403, 36.6740, 8.3318

Details

The CIELCh color $74, 40.965, 7.867$ is a light color, and the websafe version is hex `FF9999`. A complement of this color would be $93, 34.552, 178.884$, and the grayscale version is $75, 0.009, 296.813$.

A 20% lighter version of the original color is $88, 19.960, 349.596$, and $54, 40.974, 7.767$ is the 20% darker color. If you saturate the color by 10%, you get $68, 51.718, 9.915$, and if you desaturate by 10%, it is $80, 30.213, 6.224$.

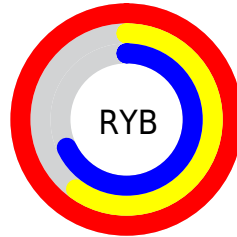
Distribution



Red (100%)

Green (60%)

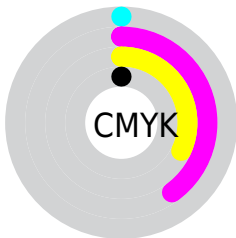
Blue (68%)



Red (100%)

Yellow (60%)

Blue (68%)

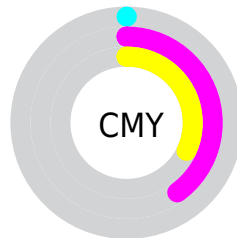


Cyan (0%)

Magenta (40%)

Yellow (32%)

Black (0%)



Cyan (0%)


Magenta (40%)

Yellow (32%)

Brightness & Saturation Gradients

These gradients show how the CIELCh color 74, 40.965, 7.867 changes by changing the brightness by 10 percent. The first figure shows a shift by +10% for each color and the second figure -10%.

Similar to the brightness gradients but the following saturation gradients show a change of the CIELCh color 74, 40.965, 7.867 by changing the saturation by 10% instead.

 74, 40.965, 7.867  74, 40.965, 7.867

 100, 40.965, 7.867  64, 40.965, 7.867

 94, 40.965, 7.867  54, 40.965, 7.867

 44, 40.965, 7.867

 34, 40.965, 7.867

 24, 40.965, 7.867

 14, 40.965, 7.867

 4, 40.965, 7.867

 0, 40.965, 7.867

 74, 40.965, 7.867  74, 40.965, 7.867

■ 68, 51.718, 9.915

■ 80, 30.213, 6.224

■ 64, 62.109, 12.498

■ 86, 19.733, 4.870

■ 59, 71.697, 15.778

■ 93, 9.676, 3.716

■ 56, 80.120, 19.895

100, 0.115,
357.514

■ 54, 87.259, 24.855

100, 0.240,
202.154

■ 53, 93.344, 30.184

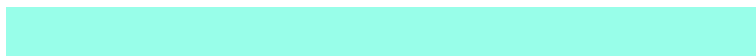
Harmonies

Complementary

The Complementary color scheme is a pair of colors which are on the opposite of each other on the color wheel.



74, 40.965, 7.867



93, 34.552, 178.884

Rectangle

The Rectangle color scheme consists of four colors that form a rectangle on the color wheel.



74, 40.965, 7.867



74, 40.965, 57.867



74, 40.965, 187.867



74, 40.965, 237.867

Sweetspot

The Sweet Spot groups the original color and five complimentary colors.



74, 40.962, 7.870



92, 11.558, 3.923



74, 60.536, 320.063



48, 7.692, 4.069



0, 0.000, 0.000



53, 0.007, 296.813

Same Dimension

The Same Dimension uses a secret algorithm to generate beautiful new colors.



74, 40.962, 7.870



70, 49.566, 9.444



80, 34.240, 47.628



50, 5.440, 3.649



40, 74.664, 29.162



10, 31.950, 18.443

Inverse Universe

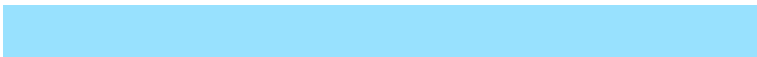
The Inverse Universe completely reimagines the original color for something new.



74, 40.962, 7.870



70, 49.566, 9.444



86, 26.272, 233.764



50, 5.440, 3.649



40, 74.664, 29.162



10, 31.950, 18.443

Previews

White Background



This preview shows how the CIELCh color 74, 40.965, 7.867 looks on a white background.

Color Contrast Check

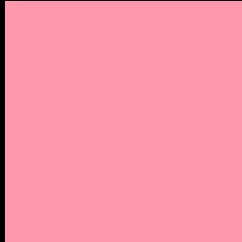
Large Text (above 18pt) WCAG AA × Fail

Any Text WCAG AA × Fail

Large Text (above 18pt) WCAG AAA × Fail

Any Text WCAG AAA × Fail

Black Background



This preview shows how the CIELCh color 74, 40.965, 7.867 looks on a black background.

Color Contrast Check

Large Text (above 18pt) WCAG AA ✓ Pass

Any Text WCAG AA ✓ Pass

Large Text (above 18pt) WCAG AAA ✓ Pass

Any Text WCAG AAA ✓ Pass

If you want to check with other color combinations, try the [Color Contrast Checker](#).

CIELCh 74, 40.965, 7.867

Background



This preview shows how black text looks on a background with the CIELCh color 74, 40.965, 7.867.

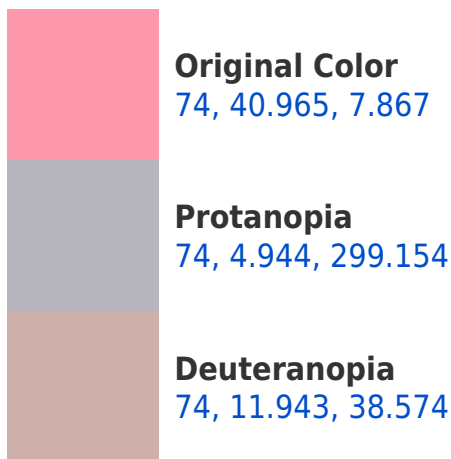


This preview shows how white text looks on a background with the CIELCh color 74, 40.965, 7.867.

Color Blindness Simulation

Color vision deficiency is a very complex topic, and I could not describe the different causes any better than Wikipedia does, so if you want to learn more, you should check out their [article about color blindness](#).

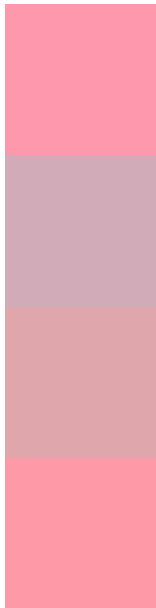
Dichromacy





Tritanopia
74, 39.946, 15.012

Trichromacy



Original Color
74, 40.965, 7.867

Protanomaly
74, 15.997, 354.886

Deuteranomaly
74, 22.009, 15.818

Tritanomaly
74, 40.358, 12.148

Monochromacy



Original Color
74, 40.965, 7.867

Achromatopsia
75, 0.009, 296.813

Achromatomaly
74, 14.746, 3.760

CSS Examples

Text

The CSS property to change the color of the text to CIELCh 74, 40.965, 7.867 is called "color". The color property can be set on classes, ids or directly on the HTML element.

This example shows how text in the color `rgb(254, 152, 173)` looks like.

```
.text, #text, p{  
    color:rgb(254, 152, 173)  
}
```

If you want to add a text shadow in that color use the text-shadow property, you can generate a text shadow directly with our [CSS Text Shadow Generator](#).

Here you see how black text with a 4 pixel rgb(254, 152, 173) colored shadow looks like.

```
.shadow{ text-shadow: 4px 4px 2px rgb(254, 152, 173) }
```

Border

The CSS property to change the border of an element to CIELCh 74, 40.965, 7.867 is called "border". The border property can be set on classes, ids or directly on the HTML element.

This example shows the color as border, it can be applied via the CSS property "border" or "border-color".

```
.border, #border, table{ border:4px solid rgb(254, 152, 173) }
```

If only the border color should be changed use the property `border-color`.

```
.border{ border-color:rgb(254, 152, 173) }
```

If you want to add a box shadow in that color use:

Here you see how a box with a 4 pixel `rgb(254, 152, 173)` colored shadow looks like.

```
.boxshadow{ -moz-box-shadow:4px 4px 4px  
4px rgb(254, 152, 173); -webkit-box-  
shadow:4px 4px 4px 4px rgb(254, 152, 173);  
box-shadow:4px 4px 4px 4px rgb(254, 152,  
173) }
```

Background

The CSS property to change the background color of an element to CIELCh 74, 40.965, 7.867 is called "background". The background property can be set on classes, ids or directly on the HTML element.

```
.background, #background, body{  
background: rgb(254, 152, 173) }
```

If only the background color should be changed can be used:

```
.background{ background-color: rgb(254,  
152, 173) }
```

This example shows the color as background, it is applied via the CSS property "background".

To optimize and compress your CSS code, you can use our [online CSS compressor and optimizer](#) based on csstidy. If you want to create a linear or radial gradient as background or border, check our [CSS Gradient Generator](#).

Hey! You found this booklet interesting? Support Converting Colors with the new Membership Option!

The pro membership hides all ads, plus gives you double the colors in the color bucket, and more awesome pro features!

[Learn more, Memberships starting at \\$2.50/m!](#)

**Follow me
on Twitter!**

@ConvertingColor