

Converting Colors

CIELCh(74, 41.126, 23.766)

Have a look what the booklet for
CIELCh(74, 41.126, 23.766) contains.

CIELCh(74, 41.152, 24.038)	3
<i>Conversions</i>	4
<i>Details</i>	6
<i>Harmonies</i>	11
<i>Previews</i>	20
<i>Color Blindness Simulation</i>	23
<i>CSS Examples</i>	26

Color

CIELCh(74, 41.152, 24.038)

Conversions

Conversions Part 1

Format	Color
Hex	FF9A99
RGB	255, 154, 153
RGB Percent	100%, 60%, 60%
CMY	0.0000, 0.3958, 0.3998
CMYK	0.00, 0.40, 0.40, 0.00
HSL	1°, 100%, 80%
HSV	1°, 40%, 100%
XYZ	58.5828, 46.7039, 36.0884
YIQ	184.0850, 60.5170, 21.1010

Conversions

Conversions Part 2

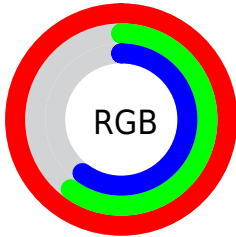
Format	Color
R_{YB}	255, 154, 153
Decimal	16751257
CIE _{Lab}	74.00, 37.58, 16.76
CIE _{LCh}	74, 41.152, 24.038
Yxy	46.7039, 0.4144, 0.3304
Android (android.graphics.Color)	4294941337 (0xFFFF9A99)
YUV	184.0850, -15.3249, 62.1925
Hunter-Lab	68.3403, 33.4187, 16.5290

Details

The CIELCh color **74, 41.152, 24.038** is a light color, and the websafe version is hex **FF9999**. A complement of this color would be **94, 30.813, 198.494**, and the grayscale version is **75, 0.009, 296.813**.

A 20% lighter version of the original color is **88, 17.018, 25.839**, and **54, 41.048, 23.958** is the 20% darker color. If you saturate the color by 10%, you get **68, 53.069, 25.845**, and if you desaturate by 10%, it is **80, 29.739, 22.664**.

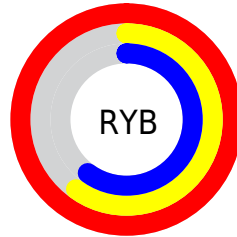
Distribution



Red (100%)

Green (60%)

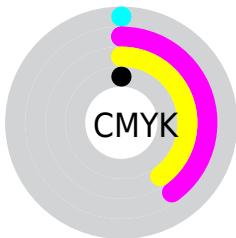
Blue (60%)



Red (100%)

Yellow (60%)

Blue (60%)

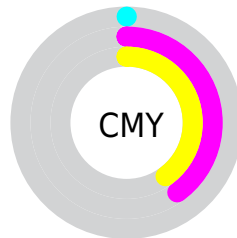


Cyan (0%)

Magenta (40%)

Yellow (40%)

Black (0%)



Cyan (0%)

Magenta (40%)

Yellow (40%)

Brightness & Saturation Gradients

These gradients show how the CIELCh color 74, 41.152, 24.038 changes by changing the brightness by 10 percent. The first figure shows a shift by +10% for each color and the second figure -10%.

Similar to the brightness gradients but the following saturation gradients show a change of the CIELCh color 74, 41.152, 24.038 by changing the saturation by 10% instead.

74, 41.152, 24.038

74, 41.152, 24.038

100, 41.152,
24.038

64, 41.152, 24.038

94, 41.152, 24.038

54, 41.152, 24.038

44, 41.152, 24.038

34, 41.152, 24.038

24, 41.152, 24.038

14, 41.152, 24.038

4, 41.152, 24.038

0, 41.152, 24.038

74, 41.152, 24.038

74, 41.152, 24.038

■ 68, 53.069, 25.845

■ 80, 29.739, 22.664

■ 63, 65.309, 28.186

■ 87, 19.062, 21.611

■ 59, 77.449, 31.125

■ 93, 9.147, 20.779

■ 56, 88.903, 34.542

100, 0.012,
296.813

■ 54, 98.517, 37.856

■ 53, 104.445,
40.065

■ 53, 104.457,
40.069

Harmonies

Complementary

The Complementary color scheme is a pair of colors which are on the opposite of each other on the color wheel.



74, 41.152, 24.038



94, 30.813, 198.494

Rectangle

The Rectangle color scheme consists of four colors that form a rectangle on the color wheel.



74, 41.152, 24.038



74, 41.152, 74.038



74, 41.152, 204.038



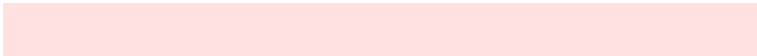
74, 41.152, 254.038

Sweetspot

The Sweet Spot groups the original color and five complimentary colors.



74, 41.123, 24.040



92, 11.091, 20.936



77, 63.253, 326.593



48, 7.395, 21.039



0, 0.000, 0.000



53, 0.007, 296.813

Same Dimension

The Same Dimension uses a secret algorithm to generate beautiful new colors.



74, 41.123, 24.040



69, 50.673, 25.448



85, 34.227, 70.378



50, 5.202, 20.743



40, 84.093, 40.099



10, 33.161, 27.657

Inverse Universe

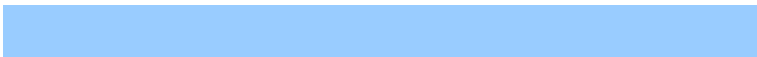
The Inverse Universe completely reimagines the original color for something new.



94, 30.813, 198.494



93, 35.503, 198.256



80, 30.494, 262.413



52, 4.895, 199.826



70, 39.798, 197.930



23, 18.340, 197.742

Previews

White Background



This preview shows how the CIELCh color 74, 41.152, 24.038 looks on a white background.

Color Contrast Check

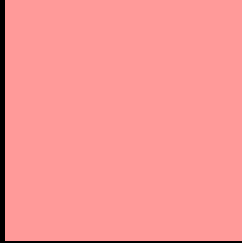
Large Text (above 18pt) WCAG AA × Fail

Any Text WCAG AA × Fail

Large Text (above 18pt) WCAG AAA × Fail

Any Text WCAG AAA × Fail

Black Background



This preview shows how the CIELCh color 74, 41.152, 24.038 looks on a black background.

Color Contrast Check

Large Text (above 18pt) WCAG AA ✓ Pass

Any Text WCAG AA ✓ Pass

Large Text (above 18pt) WCAG AAA ✓ Pass

Any Text WCAG AAA ✓ Pass

If you want to check with other color combinations, try the [Color Contrast Checker](#).

CIELCh 74, 41.152, 24.038

Background



This preview shows how black text looks on a background with the CIELCh color 74, 41.152, 24.038.

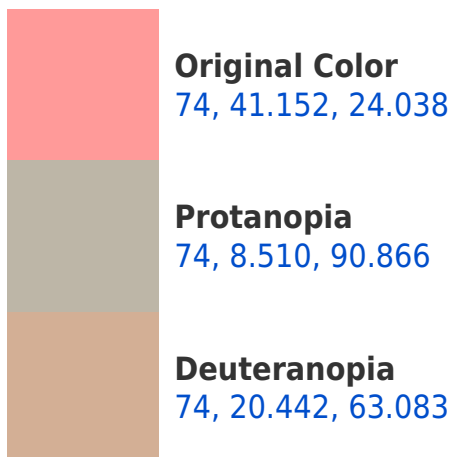


This preview shows how white text looks on a background with the CIELCh color 74, 41.152, 24.038.

Color Blindness Simulation

Color vision deficiency is a very complex topic, and I could not describe the different causes any better than Wikipedia does, so if you want to learn more, you should check out their [article about color blindness](#).

Dichromacy





Tritanopia
74, 40.781, 15.290

Trichromacy



Original Color
74, 41.152, 24.038



Protanomaly
74, 17.238, 38.764



Deuteranomaly
74, 26.452, 41.345



Tritanomaly
74, 40.938, 18.264

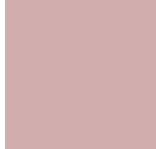
Monochromacy



Original Color
74, 41.152, 24.038



Achromatopsia
75, 0.009, 296.813



Achromatomaly
74, 14.354, 20.611

CSS Examples

Text

The CSS property to change the color of the text to CIELCh 74, 41.152, 24.038 is called "color". The color property can be set on classes, ids or directly on the HTML element.

This example shows how text in the color `rgb(255, 154, 153)` looks like.

```
.text, #text, p{  
    color:rgb(255, 154, 153)  
}
```

If you want to add a text shadow in that color use the text-shadow property, you can generate a text shadow directly with our [CSS Text Shadow Generator](#).

Here you see how black text with a 4 pixel rgb(255, 154, 153) colored shadow looks like.

```
.shadow{ text-shadow: 4px 4px 2px rgb(255, 154, 153) }
```

Border

The CSS property to change the border of an element to CIELCh 74, 41.152, 24.038 is called "border". The border property can be set on classes, ids or directly on the HTML element.

This example shows the color as border, it can be applied via the CSS property "border" or "border-color".

```
.border, #border, table{ border:4px solid rgb(255, 154, 153) }
```

If only the border color should be changed use the property `border-color`.

```
.border{ border-color:rgb(255, 154, 153) }
```

If you want to add a box shadow in that color use:

Here you see how a box with a 4 pixel `rgb(255, 154, 153)` colored shadow looks like.

```
.boxshadow{ -moz-box-shadow:4px 4px 4px  
4px rgb(255, 154, 153); -webkit-box-  
shadow:4px 4px 4px 4px rgb(255, 154, 153);  
box-shadow:4px 4px 4px 4px rgb(255, 154,  
153) }
```

Background

The CSS property to change the background color of an element to CIELCh 74, 41.152, 24.038 is called "background". The background property can be set on classes, ids or directly on the HTML element.

```
.background, #background, body{  
background: rgb(255, 154, 153) }
```

If only the background color should be changed can be used:

```
.background{ background-color: rgb(255,  
154, 153) }
```

This example shows the color as background, it is applied via the CSS property "background".

To optimize and compress your CSS code, you can use our [online CSS compressor and optimizer](#) based on csstidy. If you want to create a linear or radial gradient as background or border, check our [CSS Gradient Generator](#).

Hey! You found this booklet interesting? Support Converting Colors with the new Membership Option!

The pro membership hides all ads, plus gives you double the colors in the color bucket, and more awesome pro features!

[Learn more, Memberships starting at \\$2.50/m!](#)

**Follow me
on Twitter!**

@ConvertingColor