

Converting Colors

CIELCh(74, 45.951, 14.814)

Have a look what the booklet for
CIELCh(74, 45.951, 14.814) contains.

CIELCh(73, 42.919, 13.905)	3
<i>Conversions</i>	4
<i>Details</i>	6
<i>Harmonies</i>	11
<i>Previews</i>	20
<i>Color Blindness Simulation</i>	23
<i>CSS Examples</i>	26

Color

CIELCh(73, 42.919, 13.905)

Conversions

Conversions Part 1

Format	Color
Hex	FF94A2
RGB	255, 148, 162
RGB Percent	100%, 58%, 64%
CMY	0.0000, 0.4188, 0.3639
CMYK	0.00, 0.42, 0.36, 0.00
HSL	352°, 100%, 79%
HSV	352°, 42%, 100%
XYZ	58.4870, 45.1644, 39.9118
YIQ	181.5890, 59.2780, 27.0380

Conversions

Conversions Part 2

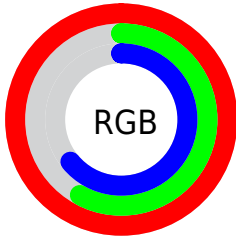
Format	Color
RYB	255, 148, 162
Decimal	16749730
CIELab	73.00, 41.66, 10.31
CIELCh	73, 42.919, 13.905
Yxy	45.1644, 0.4074, 0.3146
Android (android.graphics.Color)	4294939810 (0xFFFF94A2)
YUV	181.5890, -9.6574, 64.3814
Hunter-Lab	67.2044, 37.7380, 11.8316

Details

The CIELCh color **73, 42.919, 13.905** is a light color, and the websafe version is hex **FF9999**. A complement of this color would be **94, 34.257, 185.030**, and the grayscale version is **74, 0.009, 296.813**.

A 20% lighter version of the original color is **87, 19.977, 1.224**, and **53, 42.697, 13.489** is the 20% darker color. If you saturate the color by 10%, you get **67, 53.945, 16.028**, and if you desaturate by 10%, it is **79, 31.850, 12.174**.

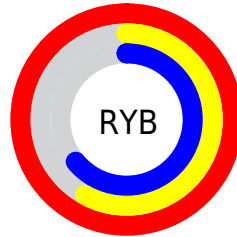
Distribution



Red (100%)

Green (58%)

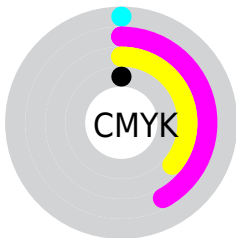
Blue (64%)



Red (100%)

Yellow (58%)

Blue (64%)

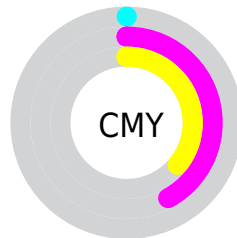


Cyan (0%)

Magenta (42%)

Yellow (36%)

Black (0%)



Cyan (0%)

Magenta (42%)

Yellow (36%)

Brightness & Saturation Gradients

These gradients show how the CIELCh color 73, 42.919, 13.905 changes by changing the brightness by 10 percent. The first figure shows a shift by +10% for each color and the second figure -10%.

Similar to the brightness gradients but the following saturation gradients show a change of the CIELCh color 73, 42.919, 13.905 by changing the saturation by 10% instead.

73, 42.919, 13.905

73, 42.919, 13.905

100, 42.919,
13.905

63, 42.919, 13.905

93, 42.919, 13.905

53, 42.919, 13.905

43, 42.919, 13.905

33, 42.919, 13.905

23, 42.919, 13.905

13, 42.919, 13.905

3, 42.919, 13.905

0, 42.919, 13.905

73, 42.919, 13.905

73, 42.919, 13.905

67, 53.945, 16.028

79, 31.850, 12.174

63, 64.860, 18.769

85, 21.262, 10.804

59, 75.167, 22.236

92, 11.199, 9.669

56, 84.524, 26.483

99, 1.718, 8.437

54, 92.697, 31.310

100, 0.012,
296.813

53, 98.336, 35.112

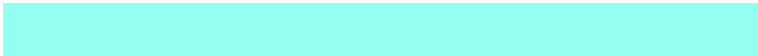
Harmonies

Complementary

The Complementary color scheme is a pair of colors which are on the opposite of each other on the color wheel.



73, 42.919, 13.905



94, 34.257, 185.030

Rectangle

The Rectangle color scheme consists of four colors that form a rectangle on the color wheel.



73, 42.919, 13.905



73, 42.919, 63.905



73, 42.919, 193.905



73, 42.919, 243.905

Sweetspot

The Sweet Spot groups the original color and five complimentary colors.



73, 42.826, 13.876



91, 12.301, 9.789



74, 64.271, 322.694



47, 8.666, 10.028



0, 0.000, 0.000



53, 0.007, 296.813

Same Dimension

The Same Dimension uses a secret algorithm to generate beautiful new colors.



73, 42.826, 13.876



68, 51.862, 15.584



81, 35.369, 56.212



50, 5.322, 9.422



40, 78.447, 34.249



10, 32.397, 21.820

Inverse Universe

The Inverse Universe completely reimagines the original color for something new.



73, 42.826, 13.876



68, 51.862, 15.584



83, 28.206, 246.041



50, 5.322, 9.422



40, 78.447, 34.249



10, 32.397, 21.820

Previews

White Background



This preview shows how the CIELCh color 73, 42.919, 13.905 looks on a white background.

Color Contrast Check

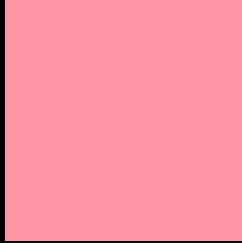
Large Text (above 18pt) WCAG AA × Fail

Any Text WCAG AA × Fail

Large Text (above 18pt) WCAG AAA × Fail

Any Text WCAG AAA × Fail

Black Background



This preview shows how the CIELCh color 73, 42.919, 13.905 looks on a black background.

Color Contrast Check

Large Text (above 18pt) WCAG AA ✓ Pass

Any Text WCAG AA ✓ Pass

Large Text (above 18pt) WCAG AAA ✓ Pass

Any Text WCAG AAA ✓ Pass

If you want to check with other color combinations, try the [Color Contrast Checker](#).

CIELCh 73, 42.919, 13.905

Background



This preview shows how black text looks on a background with the CIELCh color 73, 42.919, 13.905.



This preview shows how white text looks on a background with the CIELCh color 73, 42.919, 13.905.

Color Blindness Simulation

Color vision deficiency is a very complex topic, and I could not describe the different causes any better than Wikipedia does, so if you want to learn more, you should check out their [article about color blindness](#).

Dichromacy



Original Color

73, 42.919, 13.905

Protanopia

73, 1.499, 19.191

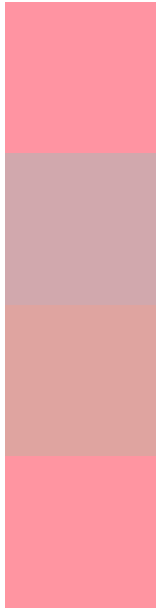
Deuteranopia

73, 15.192, 52.305



Tritanopia
73, 42.549, 15.888

Trichromacy



Original Color
73, 42.919, 13.905

Protanomaly
73, 16.084, 11.210

Deuteranomaly
73, 23.768, 26.632

Tritanomaly
73, 42.519, 15.172

Monochromacy



Original Color
73, 42.919, 13.905

Achromatopsia
74, 0.009, 296.813

Achromatomaly
73, 15.269, 10.612

CSS Examples

Text

The CSS property to change the color of the text to CIELCh 73, 42.919, 13.905 is called "color". The color property can be set on classes, ids or directly on the HTML element.

This example shows how text in the color `rgb(255, 148, 162)` looks like.

```
.text, #text, p{  
    color:rgb(255, 148, 162)  
}
```

If you want to add a text shadow in that color use the text-shadow property, you can generate a text shadow directly with our [CSS Text Shadow Generator](#).

Here you see how black text with a 4 pixel rgb(255, 148, 162) colored shadow looks like.

```
.shadow{ text-shadow: 4px 4px 2px rgb(255, 148, 162) }
```

Border

The CSS property to change the border of an element to CIELCh 73, 42.919, 13.905 is called "border". The border property can be set on classes, ids or directly on the HTML element.

This example shows the color as border, it can be applied via the CSS property "border" or "border-color".

```
.border, #border, table{ border:4px solid rgb(255, 148, 162) }
```

If only the border color should be changed use the property `border-color`.

```
.border{ border-color:rgb(255, 148, 162) }
```

If you want to add a box shadow in that color use:

Here you see how a box with a 4 pixel `rgb(255, 148, 162)` colored shadow looks like.

```
.boxshadow{ -moz-box-shadow:4px 4px 4px  
4px rgb(255, 148, 162); -webkit-box-  
shadow:4px 4px 4px 4px rgb(255, 148, 162);  
box-shadow:4px 4px 4px 4px rgb(255, 148,  
162) }
```

Background

The CSS property to change the background color of an element to CIELCh 73, 42.919, 13.905 is called "background". The background property can be set on classes, ids or directly on the HTML element.

```
.background, #background, body{  
background: rgb(255, 148, 162) }
```

If only the background color should be changed can be used:

```
.background{ background-color: rgb(255,  
148, 162) }
```

This example shows the color as background, it is applied via the CSS property "background".

To optimize and compress your CSS code, you can use our [online CSS compressor and optimizer](#) based on csstidy. If you want to create a linear or radial gradient as background or border, check our [CSS Gradient Generator](#).

Hey! You found this booklet interesting? Support Converting Colors with the new Membership Option!

The pro membership hides all ads, plus gives you double the colors in the color bucket, and more awesome pro features!

[Learn more, Memberships starting at \\$2.50/m!](#)

**Follow me
on Twitter!**

@ConvertingColor