

Converting Colors

CIELCh(74, 5.772, 9.044)

Have a look what the booklet for
CIELCh(74, 5.772, 9.044) contains.

CIELCh(74, 5.772, 9.044)	3
<i>Conversions</i>	4
<i>Details</i>	6
<i>Harmonies</i>	11
<i>Previews</i>	20
<i>Color Blindness Simulation</i>	23
<i>CSS Examples</i>	26

Color

CIELCh(74, 5.772, 9.044)

Conversions

Conversions Part 1

Format	Color
Hex	C1B2B4
RGB	193, 178, 180
RGB Percent	76%, 70%, 71%
CMY	0.2415, 0.3004, 0.2925
CMYK	0.00, 0.08, 0.07, 0.24
HSL	352°, 11%, 73%
HSV	352°, 8%, 76%
XYZ	46.3764, 46.7039, 49.9658
YIQ	182.7130, 8.2980, 3.8020

Conversions

Conversions Part 2

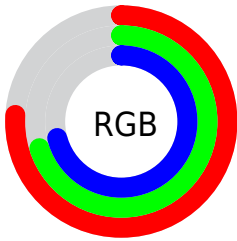
Format	Color
RYB	193, 178, 180
Decimal	12694196
CIELab	74.00, 5.70, 0.91
CIELCh	74, 5.772, 9.044
Yxy	46.7039, 0.3242, 0.3265
Android (android.graphics.Color)	4290884276 (0xFFC1B2B4)
YUV	182.7130, -1.3375, 9.0217
Hunter-Lab	68.3403, 1.5364, 4.4893

Details

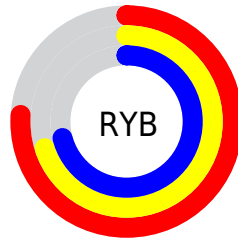
The CIELCh color $74, 5.772, 9.044$ is a light color, and the websafe version is hex `CCCCCC`. A complement of this color would be $77, 5.563, 187.939$, and the grayscale version is $74, 0.009, 296.813$.

A 20% lighter version of the original color is $94, 5.475, 8.870$, and $54, 5.772, 8.506$ is the 20% darker color. If you saturate the color by 10%, you get $69, 13.614, 10.116$, and if you desaturate by 10%, it is $79, 1.613, 188.624$.

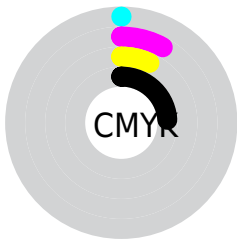
Distribution



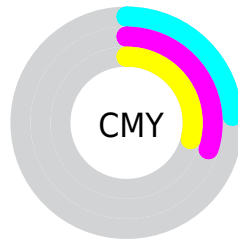
- Red (76%)
- Green (70%)
- Blue (71%)



- Red (76%)
- Yellow (70%)
- Blue (71%)



- Cyan (0%)
- Magenta (8%)
- Yellow (7%)
- Black (24%)



- Cyan (24%)
- Magenta (30%)
- Yellow (29%)

Brightness & Saturation Gradients

These gradients show how the CIELCh color 74, 5.772, 9.044 changes by changing the brightness by 10 percent. The first figure shows a shift by +10% for each color and the second figure -10%.

Similar to the brightness gradients but the following saturation gradients show a change of the CIELCh color 74, 5.772, 9.044 by changing the saturation by 10% instead.

■ 74, 5.772, 9.044

■ 74, 5.772, 9.044

■ 100, 5.772, 9.044

■ 64, 5.772, 9.044

■ 94, 5.772, 9.044

■ 54, 5.772, 9.044

■ 44, 5.772, 9.044

■ 34, 5.772, 9.044

■ 24, 5.772, 9.044

■ 14, 5.772, 9.044

■ 4, 5.772, 9.044

■ 0, 5.772, 9.044

■ 74, 5.772, 9.044

■ 74, 5.772, 9.044

69, 13.614, 10.116

79, 1.613, 188.624

63, 21.893, 11.349

85, 8.546, 187.646

59, 30.533, 12.860

90, 15.056,
186.999

54, 39.384, 14.748

96, 20.843,
187.381

50, 48.213, 17.138

46, 56.720, 20.167

96, 20.090,
198.182

43, 64.603, 23.943

42, 71.645, 28.433

41, 77.731, 33.219

Harmonies

Complementary

The Complementary color scheme is a pair of colors which are on the opposite of each other on the color wheel.



74, 5.772, 9.044



77, 5.563, 187.939

Rectangle

The Rectangle color scheme consists of four colors that form a rectangle on the color wheel.



74, 5.772, 9.044



74, 5.772, 59.044



74, 5.772, 189.044



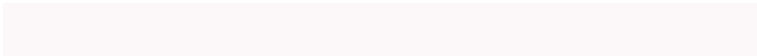
74, 5.772, 239.044

Sweetspot

The Sweet Spot groups the original color and five complimentary colors.



74, 5.770, 9.059



98, 1.817, 8.302



74, 9.468, 321.103



53, 1.041, 8.276



0, 0.000, 0.000



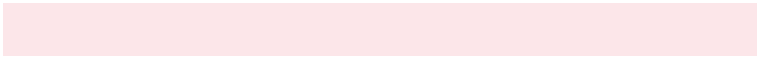
53, 0.007, 296.813

Same Dimension

The Same Dimension uses a secret algorithm to generate beautiful new colors.



74, 5.770, 9.059



93, 8.347, 9.202



75, 4.643, 59.025



38, 4.245, 9.225



33, 68.350, 33.441



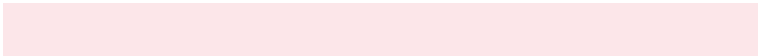
3, 14.136, 12.173

Inverse Universe

The Inverse Universe completely reimagines the original color for something new.



74, 5.770, 9.059



93, 8.347, 9.202



76, 4.491, 240.688



38, 4.245, 9.225



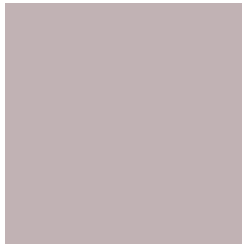
33, 68.350, 33.441



3, 14.136, 12.173

Previews

White Background



This preview shows how the CIELCh color 74, 5.772, 9.044 looks on a white background.

Color Contrast Check

Large Text (above 18pt) WCAG AA × Fail

Any Text WCAG AA × Fail

Large Text (above 18pt) WCAG AAA × Fail

Any Text WCAG AAA × Fail

Black Background



This preview shows how the CIELCh color 74, 5.772, 9.044 looks on a black background.

Color Contrast Check

Large Text (above 18pt) WCAG AA ✓ Pass

Any Text WCAG AA ✓ Pass

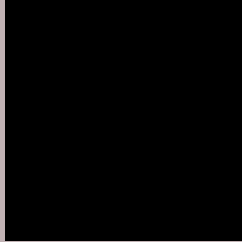
Large Text (above 18pt) WCAG AAA ✓ Pass

Any Text WCAG AAA ✓ Pass

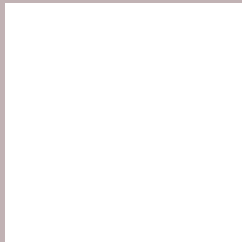
If you want to check with other color combinations, try the [Color Contrast Checker](#).

CIELCh 74, 5.772, 9.044

Background



This preview shows how black text looks on a background with the CIELCh color 74, 5.772, 9.044.



This preview shows how white text looks on a background with the CIELCh color 74, 5.772, 9.044.

Color Blindness Simulation

Color vision deficiency is a very complex topic, and I could not describe the different causes any better than Wikipedia does, so if you want to learn more, you should check out their [article about color blindness](#).

Dichromacy



Original Color

74, 5.772, 9.044

Protanopia

74, 1.596, 359.422

Deuteranopia

74, 9.493, 3.711



Tritanopia
74, 10.129, 331.868

Trichromacy



Original Color

74, 5.772, 9.044

Protanomaly

74, 3.054, 9.317

Deuteranomaly

74, 8.242, 4.910

Tritanomaly

74, 7.727, 341.023

Monochromacy



Original Color

74, 5.772, 9.044

Achromatopsia

74, 0.009, 296.813

Achromatomaly

74, 2.315, 5.891

CSS Examples

Text

The CSS property to change the color of the text to CIELCh 74, 5.772, 9.044 is called "color". The color property can be set on classes, ids or directly on the HTML element.

This example shows how text in the color `rgb(193, 178, 180)` looks like.

```
.text, #text, p{  
    color:rgb(193, 178, 180)  
}
```

If you want to add a text shadow in that color use the text-shadow property, you can generate a text shadow directly with our [CSS Text Shadow Generator](#).

Here you see how black text with a 4 pixel rgb(193, 178, 180) colored shadow looks like.

```
.shadow{ text-shadow: 4px 4px 2px rgb(193, 178, 180) }
```

Border

The CSS property to change the border of an element to CIELCh 74, 5.772, 9.044 is called "border". The border property can be set on classes, ids or directly on the HTML element.

This example shows the color as border, it can be applied via the CSS property "border" or "border-color".

```
.border, #border, table{ border:4px solid rgb(193, 178, 180) }
```

If only the border color should be changed use the property `border-color`.

```
.border{ border-color:rgb(193, 178, 180) }
```

If you want to add a box shadow in that color use:

Here you see how a box with a 4 pixel `rgb(193, 178, 180)` colored shadow looks like.

```
.boxshadow{ -moz-box-shadow:4px 4px 4px  
4px rgb(193, 178, 180); -webkit-box-  
shadow:4px 4px 4px 4px rgb(193, 178, 180);  
box-shadow:4px 4px 4px 4px rgb(193, 178,  
180) }
```

Background

The CSS property to change the background color of an element to CIELCh 74, 5.772, 9.044 is called "background". The background property can be set on classes, ids or directly on the HTML element.

```
.background, #background, body{  
background: rgb(193, 178, 180) }
```

If only the background color should be changed can be used:

```
.background{ background-color: rgb(193,  
178, 180) }
```

This example shows the color as background, it is applied via the CSS property "background".

To optimize and compress your CSS code, you can use our [online CSS compressor and optimizer](#) based on csstidy. If you want to create a linear or radial gradient as background or border, check our [CSS Gradient Generator](#).

Hey! You found this booklet interesting? Support Converting Colors with the new Membership Option!

The pro membership hides all ads, plus gives you double the colors in the color bucket, and more awesome pro features!

[Learn more, Memberships starting at \\$2.50/m!](#)

**Follow me
on Twitter!**

@ConvertingColor