

Converting Colors

CIELCh(74, 6.091, 19.662)

Have a look what the booklet for
CIELCh(74, 6.091, 19.662) contains.

CIELCh(74, 6.071, 19.832)	3
<i>Conversions</i>	4
<i>Details</i>	6
<i>Harmonies</i>	11
<i>Previews</i>	20
<i>Color Blindness Simulation</i>	23
<i>CSS Examples</i>	26

Color

CIELCh(74, 6.071, 19.832)

Conversions

Conversions Part 1

Format	Color
Hex	C2B2B2
RGB	194, 178, 178
RGB Percent	76%, 70%, 70%
CMY	0.2380, 0.3007, 0.3007
CMYK	0.00, 0.08, 0.08, 0.24
HSL	0°, 12%, 73%
HSV	0°, 8%, 76%
XYZ	46.3802, 46.7039, 48.8544
YIQ	182.7840, 9.5360, 3.3920

Conversions

Conversions Part 2

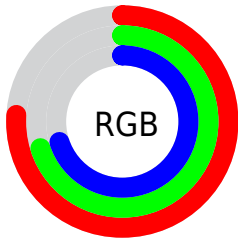
Format	Color
RYB	194, 178, 178
Decimal	12759730
CIELab	74.00, 5.71, 2.06
CIElCh	74, 6.071, 19.832
Yxy	46.7039, 0.3268, 0.3290
Android (android.graphics.Color)	4290949810 (0xFFC2B2B2)
YUV	182.7840, -2.3585, 9.8364
Hunter-Lab	68.3403, 1.5463, 5.4535

Details

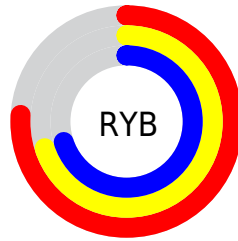
The CIELCh color $74, 6.071, 19.832$ is a light color, and the websafe version is hex `CCCCCC`. A complement of this color would be $77, 5.765, 199.071$, and the grayscale version is $74, 0.009, 296.813$.

A 20% lighter version of the original color is $94, 6.112, 19.722$, and $54, 6.096, 20.005$ is the 20% darker color. If you saturate the color by 10%, you get $69, 13.975, 20.676$, and if you desaturate by 10%, it is $80, 1.247, 199.767$.

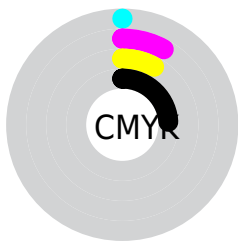
Distribution



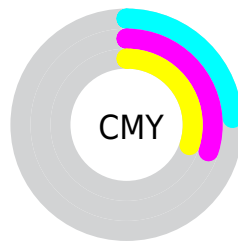
- Red (76%)
- Green (70%)
- Blue (70%)



- Red (76%)
- Yellow (70%)
- Blue (70%)



- Cyan (0%)
- Magenta (8%)
- Yellow (8%)
- Black (24%)



- Cyan (24%)
- Magenta (30%)
- Yellow (30%)

Brightness & Saturation Gradients

These gradients show how the CIELCh color 74, 6.071, 19.832 changes by changing the brightness by 10 percent. The first figure shows a shift by +10% for each color and the second figure -10%.

Similar to the brightness gradients but the following saturation gradients show a change of the CIELCh color 74, 6.071, 19.832 by changing the saturation by 10% instead.

 74, 6.071, 19.832  74, 6.071, 19.832

 100, 6.071, 19.832  64, 6.071, 19.832

 94, 6.071, 19.832  54, 6.071, 19.832

 44, 6.071, 19.832

 34, 6.071, 19.832

 24, 6.071, 19.832

 14, 6.071, 19.832

 4, 6.071, 19.832

 0, 6.071, 19.832

 74, 6.071, 19.832  74, 6.071, 19.832

69, 13.975, 20.676

80, 1.247, 199.767

63, 22.482, 21.697

85, 8.015, 198.926

58, 31.557, 23.017

91, 14.286,
198.519

54, 41.094, 24.740

96, 19.818,
198.199

50, 50.901, 26.974

46, 60.686, 29.801

43, 70.046, 33.178

42, 78.279, 36.705

41, 84.204, 39.502

Harmonies

Complementary

The Complementary color scheme is a pair of colors which are on the opposite of each other on the color wheel.



74, 6.071, 19.832



77, 5.765, 199.071

Rectangle

The Rectangle color scheme consists of four colors that form a rectangle on the color wheel.



74, 6.071, 19.832



74, 6.071, 69.832



74, 6.071, 199.832



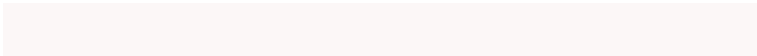
74, 6.071, 249.832

Sweetspot

The Sweet Spot groups the original color and five complimentary colors.



74, 6.070, 19.849



98, 1.780, 19.177



74, 10.515, 324.866



53, 1.020, 19.152



0, 0.000, 0.000



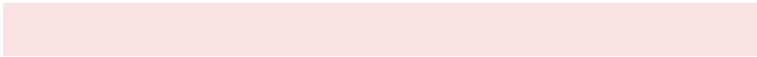
53, 0.007, 296.813

Same Dimension

The Same Dimension uses a secret algorithm to generate beautiful new colors.



74, 6.070, 19.849



92, 9.182, 20.001



76, 5.240, 74.357



38, 4.187, 19.938



33, 73.724, 39.727



3, 13.997, 19.417

Inverse Universe

The Inverse Universe completely reimagines the original color for something new.



77, 5.765, 199.071



97, 8.615, 198.952



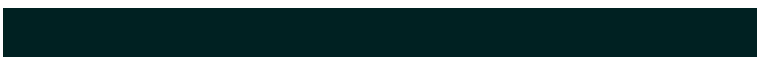
75, 5.146, 256.541



40, 3.948, 199.000



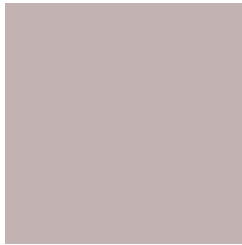
60, 35.463, 196.421



11, 12.441, 196.419

Previews

White Background



This preview shows how the CIELCh color 74, 6.071, 19.832 looks on a white background.

Color Contrast Check

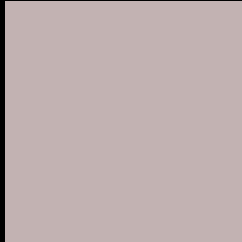
Large Text (above 18pt) WCAG AA × Fail

Any Text WCAG AA × Fail

Large Text (above 18pt) WCAG AAA × Fail

Any Text WCAG AAA × Fail

Black Background



This preview shows how the CIELCh color 74, 6.071, 19.832 looks on a black background.

Color Contrast Check

Large Text (above 18pt) WCAG AA ✓ Pass

Any Text WCAG AA ✓ Pass

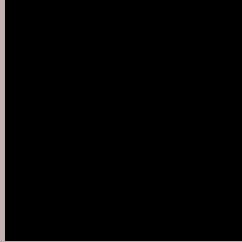
Large Text (above 18pt) WCAG AAA ✓ Pass

Any Text WCAG AAA ✓ Pass

If you want to check with other color combinations, try the [Color Contrast Checker](#).

CIELCh 74, 6.071, 19.832

Background



This preview shows how black text looks on a background with the CIELCh color 74, 6.071, 19.832.



This preview shows how white text looks on a background with the CIELCh color 74, 6.071, 19.832.

Color Blindness Simulation

Color vision deficiency is a very complex topic, and I could not describe the different causes any better than Wikipedia does, so if you want to learn more, you should check out their [article about color blindness](#).

Dichromacy



Original Color

74, 6.071, 19.832

Protanopia

74, 1.944, 35.400

Deuteranopia

74, 9.659, 10.577



Tritanopia
74, 10.644, 334.949

Trichromacy



Original Color
74, 6.071, 19.832

Protanomaly
74, 3.429, 28.577

Deuteranomaly
74, 8.437, 12.746

Tritanomaly
74, 8.330, 344.369

Monochromacy



Original Color
74, 6.071, 19.832

Achromatopsia
74, 0.009, 296.813

Achromatomaly
74, 2.248, 19.363

CSS Examples

Text

The CSS property to change the color of the text to CIELCh 74, 6.071, 19.832 is called "color". The color property can be set on classes, ids or directly on the HTML element.

This example shows how text in the color `rgb(194, 178, 178)` looks like.

```
.text, #text, p{  
    color:rgb(194, 178, 178)  
}
```

If you want to add a text shadow in that color use the text-shadow property, you can generate a text shadow directly with our [CSS Text Shadow Generator](#).

Here you see how black text with a 4 pixel rgb(194, 178, 178) colored shadow looks like.

```
.shadow{ text-shadow: 4px 4px 2px rgb(194, 178, 178) }
```

Border

The CSS property to change the border of an element to CIELCh 74, 6.071, 19.832 is called "border". The border property can be set on classes, ids or directly on the HTML element.

This example shows the color as border, it can be applied via the CSS property "border" or "border-color".

```
.border, #border, table{ border:4px solid rgb(194, 178, 178) }
```

If only the border color should be changed use the property `border-color`.

```
.border{ border-color:rgb(194, 178, 178) }
```

If you want to add a box shadow in that color use:

Here you see how a box with a 4 pixel `rgb(194, 178, 178)` colored shadow looks like.

```
.boxshadow{ -moz-box-shadow:4px 4px 4px  
4px rgb(194, 178, 178); -webkit-box-  
shadow:4px 4px 4px 4px rgb(194, 178, 178);  
box-shadow:4px 4px 4px 4px rgb(194, 178,  
178) }
```

Background

The CSS property to change the background color of an element to CIELCh 74, 6.071, 19.832 is called "background". The background property can be set on classes, ids or directly on the HTML element.

```
.background, #background, body{  
background: rgb(194, 178, 178) }
```

If only the background color should be changed can be used:

```
.background{ background-color: rgb(194,  
178, 178) }
```

This example shows the color as background, it is applied via the CSS property "background".

To optimize and compress your CSS code, you can use our [online CSS compressor and optimizer](#) based on csstidy. If you want to create a linear or radial gradient as background or border, check our [CSS Gradient Generator](#).

Hey! You found this booklet interesting? Support Converting Colors with the new Membership Option!

The pro membership hides all ads, plus gives you double the colors in the color bucket, and more awesome pro features!

[Learn more, Memberships starting at \\$2.50/m!](#)

**Follow me
on Twitter!**

@ConvertingColor