

Converting Colors

CIELCh(74, 7.010, 16.651)

Have a look what the booklet for
CIELCh(74, 7.010, 16.651) contains.

CIELCh(74, 6.842, 19.906)	3
<i>Conversions</i>	4
<i>Details</i>	6
<i>Harmonies</i>	11
<i>Previews</i>	20
<i>Color Blindness Simulation</i>	23
<i>CSS Examples</i>	26

Color

CIELCh(74, 6.842, 19.906)

Conversions

Conversions Part 1

Format	Color
Hex	C4B2B2
RGB	196, 178, 178
RGB Percent	77%, 70%, 70%
CMY	0.2320, 0.3025, 0.3025
CMYK	0.00, 0.09, 0.09, 0.23
HSL	0°, 13%, 73%
HSV	0°, 9%, 77%
XYZ	46.6360, 46.7039, 48.5966
YIQ	183.3820, 10.7280, 3.8160

Conversions

Conversions Part 2

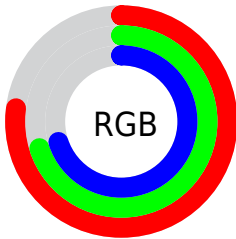
Format	Color
R_{YB}	196, 178, 178
Decimal	12890802
CIE _{Lab}	74.00, 6.43, 2.33
CIE _{LCh}	74, 6.842, 19.906
Yxy	46.7039, 0.3286, 0.3290
Android (android.graphics.Color)	4291080882 (0xFFC4B2B2)
YUV	183.3820, -2.6533, 11.0660
Hunter-Lab	68.3403, 2.2144, 5.6773

Details

The CIELCh color $74, 6.842, 19.906$ is a light color, and the websafe version is hex `CCCCCC`. A complement of this color would be $78, 6.458, 199.007$, and the grayscale version is $75, 0.009, 296.813$.

A 20% lighter version of the original color is $94, 6.841, 19.782$, and $54, 6.925, 20.104$ is the 20% darker color. If you saturate the color by 10%, you get $69, 14.855, 20.760$, and if you desaturate by 10%, it is $80, 0.579, 200.321$.

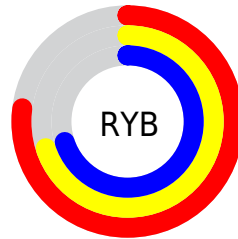
Distribution



Red (77%)

Green (70%)

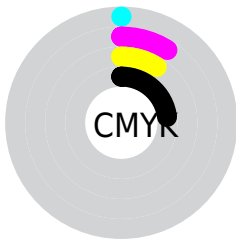
Blue (70%)



Red (77%)

Yellow (70%)

Blue (70%)

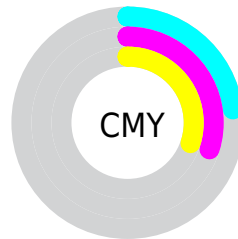


Cyan (0%)

Magenta (9%)

Yellow (9%)

Black (23%)



Cyan (23%)

Magenta (30%)

Yellow (30%)

Brightness & Saturation Gradients

These gradients show how the CIELCh color 74, 6.842, 19.906 changes by changing the brightness by 10 percent. The first figure shows a shift by +10% for each color and the second figure -10%.

Similar to the brightness gradients but the following saturation gradients show a change of the CIELCh color 74, 6.842, 19.906 by changing the saturation by 10% instead.

 74, 6.842, 19.906

 74, 6.842, 19.906

 100, 6.842, 19.906

 64, 6.842, 19.906

 94, 6.842, 19.906

 54, 6.842, 19.906

 44, 6.842, 19.906

 34, 6.842, 19.906

 24, 6.842, 19.906

 14, 6.842, 19.906

 4, 6.842, 19.906

 0, 6.842, 19.906

 74, 6.842, 19.906

 74, 6.842, 19.906

69, 14.855, 20.760

80, 0.579, 200.321

63, 23.474, 21.807

85, 7.441, 198.969

58, 32.658, 23.163

91, 13.797,
198.549

54, 42.293, 24.931

96, 19.359,
198.228

50, 52.175, 27.222

46, 62.001, 30.112

43, 71.348, 33.532

42, 79.454, 37.031

41, 85.253, 39.769

Harmonies

Complementary

The Complementary color scheme is a pair of colors which are on the opposite of each other on the color wheel.



74, 6.842, 19.906



78, 6.458, 199.007

Rectangle

The Rectangle color scheme consists of four colors that form a rectangle on the color wheel.



74, 6.842, 19.906



74, 6.842, 69.906



74, 6.842, 199.906



74, 6.842, 249.906

Sweetspot

The Sweet Spot groups the original color and five complimentary colors.



74, 6.841, 19.921



98, 2.702, 19.358



74, 11.812, 324.921



52, 2.054, 19.459



0, 0.000, 0.000



53, 0.007, 296.813

Same Dimension

The Same Dimension uses a secret algorithm to generate beautiful new colors.



74, 6.841, 19.921



92, 10.224, 20.078



76, 5.897, 74.248



38, 4.187, 19.935



33, 73.725, 39.726



3, 13.998, 19.415

Inverse Universe

The Inverse Universe completely reimagines the original color for something new.



78, 6.458, 199.007



98, 9.529, 198.889



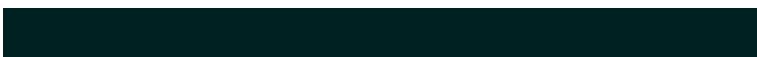
75, 5.774, 256.666



40, 3.948, 198.996



60, 35.465, 196.414



11, 12.441, 196.414

Previews

White Background



This preview shows how the CIELCh color 74, 6.842, 19.906 looks on a white background.

Color Contrast Check

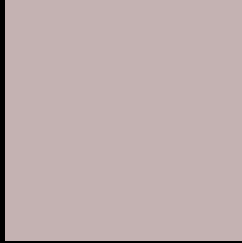
Large Text (above 18pt) WCAG AA × Fail

Any Text WCAG AA × Fail

Large Text (above 18pt) WCAG AAA × Fail

Any Text WCAG AAA × Fail

Black Background



This preview shows how the CIELCh color 74, 6.842, 19.906 looks on a black background.

Color Contrast Check

Large Text (above 18pt) WCAG AA ✓ Pass

Any Text WCAG AA ✓ Pass

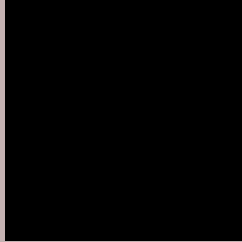
Large Text (above 18pt) WCAG AAA ✓ Pass

Any Text WCAG AAA ✓ Pass

If you want to check with other color combinations, try the [Color Contrast Checker](#).

CIELCh 74, 6.842, 19.906

Background



This preview shows how black text looks on a background with the CIELCh color 74, 6.842, 19.906.



This preview shows how white text looks on a background with the CIELCh color 74, 6.842, 19.906.

Color Blindness Simulation

Color vision deficiency is a very complex topic, and I could not describe the different causes any better than Wikipedia does, so if you want to learn more, you should check out their [article about color blindness](#).

Dichromacy



Original Color

74, 6.842, 19.906

Protanopia

74, 1.944, 35.400

Deuteranopia

74, 9.602, 13.752



Tritanopia
74, 10.908, 336.385

Trichromacy



Original Color
74, 6.842, 19.906

Protanomaly
74, 3.806, 27.719

Deuteranomaly
74, 8.401, 16.392

Tritanomaly
74, 8.952, 347.276

Monochromacy



Original Color
74, 6.842, 19.906

Achromatopsia
74, 0.009, 296.813

Achromatomaly
74, 2.625, 19.427

CSS Examples

Text

The CSS property to change the color of the text to CIELCh 74, 6.842, 19.906 is called "color". The color property can be set on classes, ids or directly on the HTML element.

This example shows how text in the color `rgb(196, 178, 178)` looks like.

```
.text, #text, p{  
    color:rgb(196, 178, 178)  
}
```

If you want to add a text shadow in that color use the text-shadow property, you can generate a text shadow directly with our [CSS Text Shadow Generator](#).

Here you see how black text with a 4 pixel rgb(196, 178, 178) colored shadow looks like.

```
.shadow{ text-shadow: 4px 4px 2px rgb(196, 178, 178) }
```

Border

The CSS property to change the border of an element to CIELCh 74, 6.842, 19.906 is called "border". The border property can be set on classes, ids or directly on the HTML element.

This example shows the color as border, it can be applied via the CSS property "border" or "border-color".

```
.border, #border, table{ border:4px solid rgb(196, 178, 178) }
```

If only the border color should be changed use the property `border-color`.

```
.border{ border-color:rgb(196, 178, 178) }
```

If you want to add a box shadow in that color use:

Here you see how a box with a 4 pixel `rgb(196, 178, 178)` colored shadow looks like.

```
.boxshadow{ -moz-box-shadow:4px 4px 4px  
4px rgb(196, 178, 178); -webkit-box-  
shadow:4px 4px 4px 4px rgb(196, 178, 178);  
box-shadow:4px 4px 4px 4px rgb(196, 178,  
178) }
```

Background

The CSS property to change the background color of an element to CIELCh 74, 6.842, 19.906 is called "background". The background property can be set on classes, ids or directly on the HTML element.

```
.background, #background, body{  
background: rgb(196, 178, 178) }
```

If only the background color should be changed can be used:

```
.background{ background-color: rgb(196,  
178, 178) }
```

This example shows the color as background, it is applied via the CSS property "background".

To optimize and compress your CSS code, you can use our [online CSS compressor and optimizer](#) based on csstidy. If you want to create a linear or radial gradient as background or border, check our [CSS Gradient Generator](#).

Hey! You found this booklet interesting? Support Converting Colors with the new Membership Option!

The pro membership hides all ads, plus gives you double the colors in the color bucket, and more awesome pro features!

[Learn more, Memberships starting at \\$2.50/m!](#)

**Follow me
on Twitter!**

@ConvertingColor