

Converting Colors

CIELCh(74, 7.901, 48.322)

Have a look what the booklet for
CIELCh(74, 7.901, 48.322) contains.

| | |
|--|----|
| CIELCh(74, 7.901, 48.322) | 3 |
| <i>Conversions</i> | 4 |
| <i>Details</i> | 6 |
| <i>Harmonies</i> | 11 |
| <i>Previews</i> | 20 |
| <i>Color Blindness Simulation</i> | 23 |
| <i>CSS Examples</i> | 26 |

Color

CIELCh(74, 7.901, 48.322)

Conversions

Conversions Part 1

| Format | Color |
|---------------|---------------------------|
| Hex | C4B2AB |
| RGB | 196, 178, 171 |
| RGB Percent | 77%, 70%, 67% |
| CMY | 0.2301, 0.3007, 0.3281 |
| CMYK | 0.00, 0.09, 0.13, 0.23 |
| HSL | 17°, 18%, 72% |
| HSV | 17°, 13%, 77% |
| XYZ | 46.2188, 46.7039, 45.2687 |
| YIQ | 182.5840, 12.9750, 1.6390 |

Conversions

Conversions Part 2

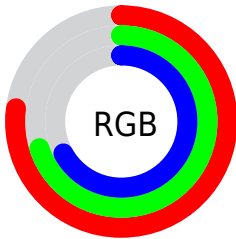
| Format | Color |
|-------------------------------------|--|
| RYB | 196, 181, 171 |
| Decimal | 12890795 |
| CIELab | 74.00, 5.25, 5.90 |
| CIElCh | 74, 7.901, 48.322 |
| Yxy | 46.7039, 0.3345, 0.3380 |
| Android (android.graphics.Color) | 4291080875 (0xFFC4B2AB) |
| YUV | 182.5840, -5.7109, 11.7658 |
| Hunter-Lab | 68.3403, 1.1247, 8.5644 |

Details

The CIELCh color $74, 7.901, 48.322$ is a light color, and the websafe version is hex `CCCCCC`. A complement of this color would be $76, 7.348, 230.050$, and the grayscale version is $74, 0.009, 296.813$.

A 20% lighter version of the original color is $94, 8.044, 50.346$, and $54, 7.852, 45.976$ is the 20% darker color. If you saturate the color by 10%, you get $70, 14.663, 47.893$, and if you desaturate by 10%, it is $78, 1.633, 48.637$.

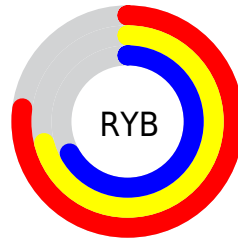
Distribution



Red (77%)

Green (70%)

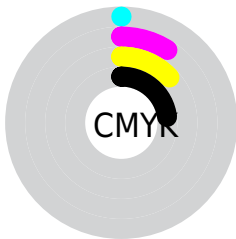
Blue (67%)



Red (77%)

Yellow (71%)

Blue (67%)

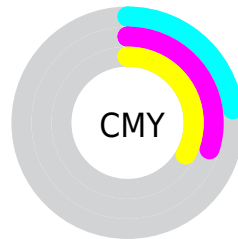


Cyan (0%)

Magenta (9%)

Yellow (13%)

Black (23%)



Cyan (23%)

Magenta (30%)

Yellow (33%)

Brightness & Saturation Gradients

These gradients show how the CIELCh color 74, 7.901, 48.322 changes by changing the brightness by 10 percent. The first figure shows a shift by +10% for each color and the second figure -10%.

Similar to the brightness gradients but the following saturation gradients show a change of the CIELCh color 74, 7.901, 48.322 by changing the saturation by 10% instead.

 74, 7.901, 48.322  74, 7.901, 48.322

 100, 7.901, 48.322  64, 7.901, 48.322

 94, 7.901, 48.322  54, 7.901, 48.322

 44, 7.901, 48.322

 34, 7.901, 48.322

 24, 7.901, 48.322

 14, 7.901, 48.322

 4, 7.901, 48.322

 0, 7.901, 48.322

 74, 7.901, 48.322  74, 7.901, 48.322

70, 14.663, 47.893

78, 1.633, 48.637

66, 21.965, 47.522

82, 4.189, 229.661

62, 29.836, 47.261

87, 9.616, 230.217

58, 38.274, 47.134

91, 14.693,
230.842

55, 47.217, 47.144

95, 17.416,
208.647

52, 56.484, 47.250

49, 65.634, 47.297

96, 19.213,
198.237

46, 73.713, 46.897

45, 78.597, 46.376

Harmonies

Complementary

The Complementary color scheme is a pair of colors which are on the opposite of each other on the color wheel.



74, 7.901, 48.322



76, 7.348, 230.050

Rectangle

The Rectangle color scheme consists of four colors that form a rectangle on the color wheel.



74, 7.901, 48.322



74, 7.901, 98.322



74, 7.901, 228.322



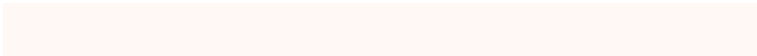
74, 7.901, 278.322

Sweetspot

The Sweet Spot groups the original color and five complimentary colors.



74, 7.901, 48.339



98, 2.966, 48.664



73, 13.650, 333.792



52, 2.114, 48.654



0, 0.000, 0.000



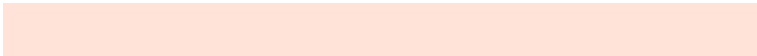
53, 0.007, 296.813

Same Dimension

The Same Dimension uses a secret algorithm to generate beautiful new colors.



74, 7.901, 48.339



92, 11.615, 48.224



77, 10.477, 96.830



39, 3.434, 48.492



37, 67.365, 46.849



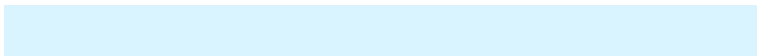
5, 11.974, 37.625

Inverse Universe

The Inverse Universe completely reimagines the original color for something new.



76, 7.348, 230.050



95, 10.635, 230.248



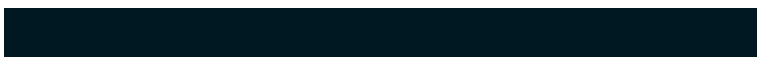
72, 10.592, 279.935



39, 3.261, 229.811



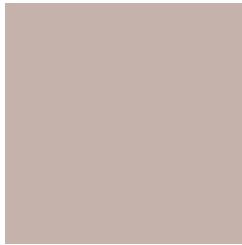
46, 33.508, 251.745



7, 10.461, 241.897

Previews

White Background



This preview shows how the CIELCh color 74, 7.901, 48.322 looks on a white background.

Color Contrast Check

Large Text (above 18pt) WCAG AA × Fail

Any Text WCAG AA × Fail

Large Text (above 18pt) WCAG AAA × Fail

Any Text WCAG AAA × Fail

Black Background



This preview shows how the CIELCh color 74, 7.901, 48.322 looks on a black background.

Color Contrast Check

Large Text (above 18pt) WCAG AA ✓ Pass

Any Text WCAG AA ✓ Pass

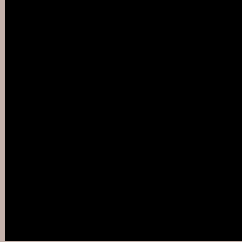
Large Text (above 18pt) WCAG AAA ✓ Pass

Any Text WCAG AAA ✓ Pass

If you want to check with other color combinations, try the [Color Contrast Checker](#).

CIELCh 74, 7.901, 48.322

Background



This preview shows how black text looks on a background with the CIELCh color 74, 7.901, 48.322.



This preview shows how white text looks on a background with the CIELCh color 74, 7.901, 48.322.

Color Blindness Simulation

Color vision deficiency is a very complex topic, and I could not describe the different causes any better than Wikipedia does, so if you want to learn more, you should check out their [article about color blindness](#).

Dichromacy



Original Color

74, 7.901, 48.322

Protanopia

74, 4.867, 81.743

Deuteranopia

74, 10.676, 31.812



Tritanopia
74, 11.113, 341.173

Trichromacy



Original Color
74, 7.901, 48.322

Protanomaly
74, 5.754, 68.046

Deuteranomaly
74, 9.664, 36.224

Tritanomaly
74, 8.565, 357.917

Monochromacy



Original Color
74, 7.901, 48.322

Achromatopsia
74, 0.009, 296.813

Achromatomaly
74, 2.837, 41.759

CSS Examples

Text

The CSS property to change the color of the text to CIELCh 74, 7.901, 48.322 is called "color". The color property can be set on classes, ids or directly on the HTML element.

This example shows how text in the color `rgb(196, 178, 171)` looks like.

```
.text, #text, p{  
    color:rgb(196, 178, 171)  
}
```

If you want to add a text shadow in that color use the text-shadow property, you can generate a text shadow directly with our [CSS Text Shadow Generator](#).

Here you see how black text with a 4 pixel rgb(196, 178, 171) colored shadow looks like.

```
.shadow{ text-shadow: 4px 4px 2px rgb(196, 178, 171) }
```

Border

The CSS property to change the border of an element to CIELCh 74, 7.901, 48.322 is called "border". The border property can be set on classes, ids or directly on the HTML element.

This example shows the color as border, it can be applied via the CSS property "border" or "border-color".

```
.border, #border, table{ border:4px solid rgb(196, 178, 171) }
```

If only the border color should be changed use the property `border-color`.

```
.border{ border-color:rgb(196, 178, 171) }
```

If you want to add a box shadow in that color use:

Here you see how a box with a 4 pixel `rgb(196, 178, 171)` colored shadow looks like.

```
.boxshadow{ -moz-box-shadow:4px 4px 4px  
4px rgb(196, 178, 171); -webkit-box-  
shadow:4px 4px 4px 4px rgb(196, 178, 171);  
box-shadow:4px 4px 4px 4px rgb(196, 178,  
171) }
```

Background

The CSS property to change the background color of an element to CIELCh 74, 7.901, 48.322 is called "background". The background property can be set on classes, ids or directly on the HTML element.

```
.background, #background, body{  
background: rgb(196, 178, 171) }
```

If only the background color should be changed can be used:

```
.background{ background-color: rgb(196,  
178, 171) }
```

This example shows the color as background, it is applied via the CSS property "background".

To optimize and compress your CSS code, you can use our [online CSS compressor and optimizer](#) based on csstidy. If you want to create a linear or radial gradient as background or border, check our [CSS Gradient Generator](#).

Hey! You found this booklet interesting? Support Converting Colors with the new Membership Option!

The pro membership hides all ads, plus gives you double the colors in the color bucket, and more awesome pro features!

[Learn more, Memberships starting at \\$2.50/m!](#)

**Follow me
on Twitter!**

@ConvertingColor