

Converting Colors

CIELCh(74, 8.678, 75.252)

Have a look what the booklet for
CIELCh(74, 8.678, 75.252) contains.

CIELCh(74, 8.629, 73.744)	3
<i>Conversions</i>	4
<i>Details</i>	6
<i>Harmonies</i>	11
<i>Previews</i>	20
<i>Color Blindness Simulation</i>	23
<i>CSS Examples</i>	26

Color

CIELCh(74, 8.629, 73.744)

Conversions

Conversions Part 1

Format	Color
Hex	C1B4A7
RGB	193, 180, 167
RGB Percent	76%, 71%, 65%
CMY	0.2436, 0.2946, 0.3455
CMYK	0.00, 0.07, 0.13, 0.24
HSL	30°, 17%, 71%
HSV	30°, 13%, 76%
XYZ	45.2251, 46.7039, 43.1353
YIQ	182.4050, 11.9210, -1.2870

Conversions

Conversions Part 2

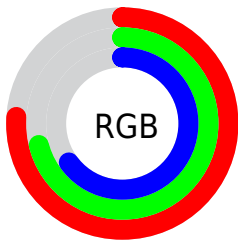
Format	Color
RYB	193, 193, 167
Decimal	12694695
CIELab	74.00, 2.42, 8.28
CIELCh	74, 8.629, 73.744
Yxy	46.7039, 0.3348, 0.3458
Android (android.graphics.Color)	4290884775 (0xFFC1B4A7)
YUV	182.4050, -7.5947, 9.2918
Hunter-Lab	68.3403, -1.4708, 10.4153

Details

The CIELCh color $74, 8.629, 73.744$ is a light color, and the websafe version is hex `CCCCCC`. A complement of this color would be $73, 8.346, 257.279$, and the grayscale version is $74, 0.009, 296.813$.

A 20% lighter version of the original color is $94, 8.808, 73.994$, and $54, 8.528, 73.340$ is the 20% darker color. If you saturate the color by 10%, you get $71, 15.390, 72.539$, and if you desaturate by 10%, it is $77, 2.172, 74.854$.

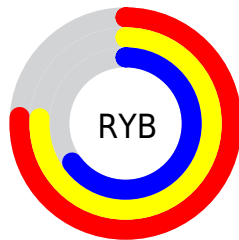
Distribution



Red (76%)

Green (71%)

Blue (65%)



Red (76%)

Yellow (76%)

Blue (65%)

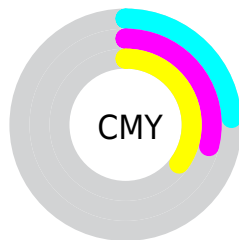


Cyan (0%)

Magenta (7%)

Yellow (13%)

Black (24%)



Cyan (24%)

Magenta (29%)

Yellow (35%)

Brightness & Saturation Gradients

These gradients show how the CIELCh color 74, 8.629, 73.744 changes by changing the brightness by 10 percent. The first figure shows a shift by +10% for each color and the second figure -10%.

Similar to the brightness gradients but the following saturation gradients show a change of the CIELCh color 74, 8.629, 73.744 by changing the saturation by 10% instead.

 74, 8.629, 73.744

 74, 8.629, 73.744

 100, 8.629, 73.744

 64, 8.629, 73.744

 94, 8.629, 73.744

 54, 8.629, 73.744

 44, 8.629, 73.744

 34, 8.629, 73.744

 24, 8.629, 73.744

 14, 8.629, 73.744

 4, 8.629, 73.744

 0, 8.629, 73.744

 74, 8.629, 73.744

 74, 8.629, 73.744

71, 15.390, 72.539

77, 2.172, 74.854

68, 22.470, 71.294

80, 4.008, 256.299

65, 29.869, 70.036

83, 9.938, 257.403

63, 37.551, 68.762

86, 15.646,
258.508

60, 45.405, 67.447

89, 17.776,
251.281

58, 53.178, 66.027

91, 16.847,
230.852

55, 60.363, 64.350

53, 66.110, 62.133

94, 18.052,
210.984

52, 69.133, 60.482

96, 20.246,
198.172

Harmonies

Complementary

The Complementary color scheme is a pair of colors which are on the opposite of each other on the color wheel.



74, 8.629, 73.744



73, 8.346, 257.279

Rectangle

The Rectangle color scheme consists of four colors that form a rectangle on the color wheel.



74, 8.629, 73.744



74, 8.629, 123.744



74, 8.629, 253.744



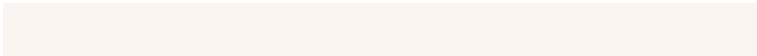
74, 8.629, 303.744

Sweetspot

The Sweet Spot groups the original color and five complimentary colors.



74, 8.630, 73.759



97, 3.089, 74.808



71, 12.115, 344.760



51, 2.199, 74.738



99, 0.012, 296.813



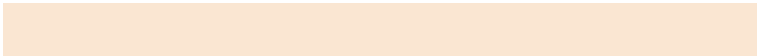
52, 0.007, 296.813

Same Dimension

The Same Dimension uses a secret algorithm to generate beautiful new colors.



74, 8.630, 73.759



92, 12.725, 73.425



77, 13.856, 108.885



39, 3.609, 74.244



43, 60.209, 61.037



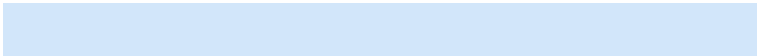
6, 11.488, 58.253

Inverse Universe

The Inverse Universe completely reimagines the original color for something new.



73, 8.346, 257.279



90, 12.209, 257.696



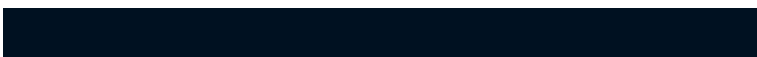
69, 14.286, 291.608



39, 3.532, 256.705



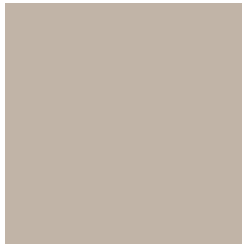
35, 50.603, 283.565



5, 12.824, 269.416

Previews

White Background



This preview shows how the CIELCh color 74, 8.629, 73.744 looks on a white background.

Color Contrast Check

Large Text (above 18pt) WCAG AA × Fail

Any Text WCAG AA × Fail

Large Text (above 18pt) WCAG AAA × Fail

Any Text WCAG AAA × Fail

Black Background



This preview shows how the CIELCh color 74, 8.629, 73.744 looks on a black background.

Color Contrast Check

Large Text (above 18pt) WCAG AA ✓ Pass

Any Text WCAG AA ✓ Pass

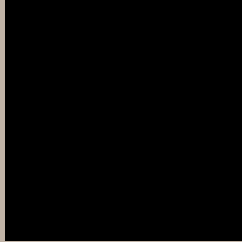
Large Text (above 18pt) WCAG AAA ✓ Pass

Any Text WCAG AAA ✓ Pass

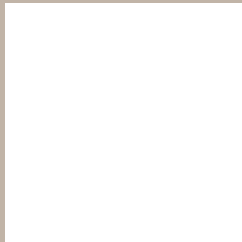
If you want to check with other color combinations, try the [Color Contrast Checker](#).

CIELCh 74, 8.629, 73.744

Background



This preview shows how black text looks on a background with the CIELCh color 74, 8.629, 73.744.



This preview shows how white text looks on a background with the CIELCh color 74, 8.629, 73.744.

Color Blindness Simulation

Color vision deficiency is a very complex topic, and I could not describe the different causes any better than Wikipedia does, so if you want to learn more, you should check out their [article about color blindness](#).

Dichromacy



Original Color

74, 8.629, 73.744

Protanopia

74, 7.646, 85.700

Deuteranopia

74, 12.151, 40.921



Tritanopia

74, 10.644, 334.949

Trichromacy



Original Color
74, 8.629, 73.744

Protanomaly
74, 7.810, 83.087

Deuteranomaly
74, 10.552, 47.313

Tritanomaly
74, 7.313, 358.328

Monochromacy



Original Color
74, 8.629, 73.744

Achromatopsia
74, 0.009, 296.813

Achromatomaly
74, 2.850, 68.498

CSS Examples

Text

The CSS property to change the color of the text to CIELCh 74, 8.629, 73.744 is called "color". The color property can be set on classes, ids or directly on the HTML element.

This example shows how text in the color `rgb(193, 180, 167)` looks like.

```
.text, #text, p{  
    color:rgb(193, 180, 167)  
}
```

If you want to add a text shadow in that color use the text-shadow property, you can generate a text shadow directly with our [CSS Text Shadow Generator](#).

Here you see how black text with a 4 pixel rgb(193, 180, 167) colored shadow looks like.

```
.shadow{ text-shadow: 4px 4px 2px rgb(193, 180, 167) }
```

Border

The CSS property to change the border of an element to CIELCh 74, 8.629, 73.744 is called "border". The border property can be set on classes, ids or directly on the HTML element.

This example shows the color as border, it can be applied via the CSS property "border" or "border-color".

```
.border, #border, table{ border:4px solid rgb(193, 180, 167) }
```

If only the border color should be changed use the property `border-color`.

```
.border{ border-color:rgb(193, 180, 167) }
```

If you want to add a box shadow in that color use:

Here you see how a box with a 4 pixel `rgb(193, 180, 167)` colored shadow looks like.

```
.boxshadow{ -moz-box-shadow:4px 4px 4px  
4px rgb(193, 180, 167); -webkit-box-  
shadow:4px 4px 4px 4px rgb(193, 180, 167);  
box-shadow:4px 4px 4px 4px rgb(193, 180,  
167) }
```

Background

The CSS property to change the background color of an element to CIELCh 74, 8.629, 73.744 is called "background". The background property can be set on classes, ids or directly on the HTML element.

```
.background, #background, body{  
background: rgb(193, 180, 167) }
```

If only the background color should be changed can be used:

```
.background{ background-color: rgb(193,  
180, 167) }
```

This example shows the color as background, it is applied via the CSS property "background".

To optimize and compress your CSS code, you can use our [online CSS compressor and optimizer](#) based on csstidy. If you want to create a linear or radial gradient as background or border, check our [CSS Gradient Generator](#).

Hey! You found this booklet interesting? Support Converting Colors with the new Membership Option!

The pro membership hides all ads, plus gives you double the colors in the color bucket, and more awesome pro features!

[Learn more, Memberships starting at \\$2.50/m!](#)

**Follow me
on Twitter!**

@ConvertingColor