

Converting Colors

CIELCh(74, 9.475, 356.719)

Have a look what the booklet for
CIELCh(74, 9.475, 356.719) contains.

CIELCh(74, 9.475, 356.719)	3
<i>Conversions</i>	4
<i>Details</i>	6
<i>Harmonies</i>	11
<i>Previews</i>	20
<i>Color Blindness Simulation</i>	23
<i>CSS Examples</i>	26

Color

CIELCh(74, 9.475, 356.719)

Conversions

Conversions Part 1

Format	Color
Hex	C7B0B7
RGB	199, 176, 183
RGB Percent	78%, 69%, 72%
CMY	0.2190, 0.3092, 0.2817
CMYK	0.00, 0.12, 0.08, 0.22
HSL	342°, 17%, 74%
HSV	342°, 12%, 78%
XYZ	47.7178, 46.7039, 51.3877
YIQ	183.6750, 11.4610, 7.0530

Conversions

Conversions Part 2

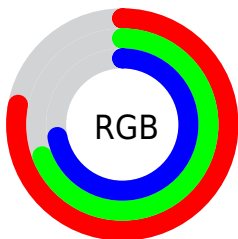
Format	Color
R _Y B	199, 176, 183
Decimal	13086903
CIE Lab	74.00, 9.46, -0.54
CIE LCh	74, 9.475, 356.719
Yxy	46.7039, 0.3273, 0.3203
Android (android.graphics.Color)	4291276983 (0xFFC7B0B7)
YUV	183.6750, -0.3328, 13.4400
Hunter-Lab	68.3403, 5.0402, 3.2558

Details

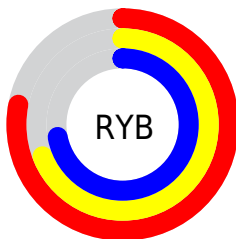
The CIELCh color $74, 9.475, 356.719$ is a light color, and the websafe version is hex `CCCCCC`. A complement of this color would be $78, 9.170, 174.653$, and the grayscale version is $75, 0.009, 296.813$.

A 20% lighter version of the original color is $94, 8.999, 356.460$, and $54, 9.735, 356.121$ is the 20% darker color. If you saturate the color by 10%, you get $69, 18.008, 357.864$, and if you desaturate by 10%, it is $79, 1.248, 355.428$.

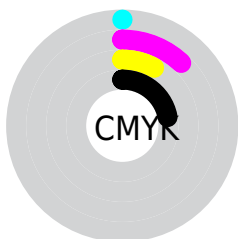
Distribution



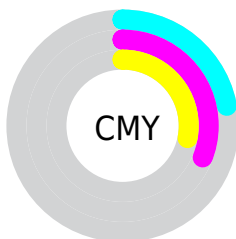
- Red (78%)
- Green (69%)
- Blue (72%)



- Red (78%)
- Yellow (69%)
- Blue (72%)



- Cyan (0%)
- Magenta (12%)
- Yellow (8%)
- Black (22%)



- Cyan (22%)
- Magenta (31%)
- Yellow (28%)

Brightness & Saturation Gradients

These gradients show how the CIELCh color 74, 9.475, 356.719 changes by changing the brightness by 10 percent. The first figure shows a shift by +10% for each color and the second figure -10%.

Similar to the brightness gradients but the following saturation gradients show a change of the CIELCh color 74, 9.475, 356.719 by changing the saturation by 10% instead.

■ 74, 9.475, 356.719

■ 74, 9.475, 356.719

■ 100, 9.475,
356.719

■ 64, 9.475, 356.719

■ 94, 9.475, 356.719

■ 54, 9.475, 356.719

■ 44, 9.475, 356.719

■ 34, 9.475, 356.719

■ 24, 9.475, 356.719

■ 14, 9.475, 356.719

■ 4, 9.475, 356.719

■ 0, 9.475, 356.719

■ 74, 9.475, 356.719

■ 74, 9.475, 356.719

69, 18.008,
357.864

79, 1.248, 355.428

64, 26.763,
359.179

85, 6.626, 175.029

59, 35.571, 0.745

91, 14.141,
174.231

54, 44.177, 2.656

96, 20.871,
174.286

50, 52.233, 5.034

96, 18.526,
194.205

47, 59.341, 8.039

96, 18.355,
198.291

44, 65.171, 11.842

43, 69.639, 16.559

42, 72.774, 21.052

Harmonies

Complementary

The Complementary color scheme is a pair of colors which are on the opposite of each other on the color wheel.



74, 9.475, 356.719



78, 9.170, 174.653

Rectangle

The Rectangle color scheme consists of four colors that form a rectangle on the color wheel.



74, 9.475, 356.719



74, 9.475, 46.719



74, 9.475, 176.719



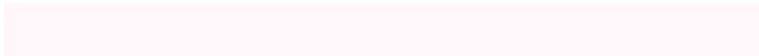
74, 9.475, 226.719

Sweetspot

The Sweet Spot groups the original color and five complimentary colors.



74, 9.473, 356.726



98, 2.958, 355.752



74, 13.776, 315.672



52, 2.246, 355.869



0, 0.000, 0.000



53, 0.007, 296.813

Same Dimension

The Same Dimension uses a secret algorithm to generate beautiful new colors.



74, 9.473, 356.726



91, 14.108, 357.016



75, 7.533, 37.376



39, 4.626, 356.493



34, 62.484, 20.143



4, 16.536, 4.021

Inverse Universe

The Inverse Universe completely reimagines the original color for something new.



74, 9.473, 356.726



91, 14.108, 357.016



78, 7.001, 217.891



39, 4.626, 356.493



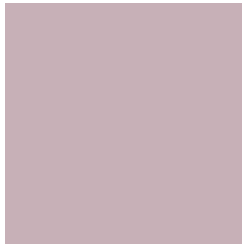
34, 62.484, 20.143



4, 16.536, 4.021

Previews

White Background



This preview shows how the CIELCh color 74, 9.475, 356.719 looks on a white background.

Color Contrast Check

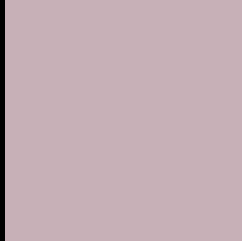
Large Text (above 18pt) WCAG AA × Fail

Any Text WCAG AA × Fail

Large Text (above 18pt) WCAG AAA × Fail

Any Text WCAG AAA × Fail

Black Background



This preview shows how the CIELCh color 74, 9.475, 356.719 looks on a black background.

Color Contrast Check

Large Text (above 18pt) WCAG AA ✓ Pass

Any Text WCAG AA ✓ Pass

Large Text (above 18pt) WCAG AAA ✓ Pass

Any Text WCAG AAA ✓ Pass

If you want to check with other color combinations, try the [Color Contrast Checker](#).

CIELCh 74, 9.475, 356.719

Background



This preview shows how black text looks on a background with the CIELCh color 74, 9.475, 356.719.



This preview shows how white text looks on a background with the CIELCh color 74, 9.475, 356.719.

Color Blindness Simulation

Color vision deficiency is a very complex topic, and I could not describe the different causes any better than Wikipedia does, so if you want to learn more, you should check out their [article about color blindness](#).

Dichromacy



Original Color

74, 9.475, 356.719

Protanopia

74, 2.945, 312.545

Deuteranopia

74, 9.475, 356.719



Tritanopia
74, 12.036, 341.516

Trichromacy



Original Color
74, 9.475, 356.719

Protanomaly
74, 5.257, 341.662

Deuteranomaly
74, 9.475, 356.719

Tritanomaly
74, 11.410, 345.783

Monochromacy



Original Color
74, 9.475, 356.719

Achromatopsia
75, 0.009, 296.813

Achromatomaly
74, 3.748, 354.003

CSS Examples

Text

The CSS property to change the color of the text to CIELCh 74, 9.475, 356.719 is called "color". The color property can be set on classes, ids or directly on the HTML element.

This example shows how text in the color `rgb(199, 176, 183)` looks like.

```
.text, #text, p{  
    color:rgb(199, 176, 183)  
}
```

If you want to add a text shadow in that color use the text-shadow property, you can generate a text shadow directly with our [CSS Text Shadow Generator](#).

Here you see how black text with a 4 pixel rgb(199, 176, 183) colored shadow looks like.

```
.shadow{ text-shadow: 4px 4px 2px rgb(199, 176, 183) }
```

Border

The CSS property to change the border of an element to CIELCh 74, 9.475, 356.719 is called "border". The border property can be set on classes, ids or directly on the HTML element.

This example shows the color as border, it can be applied via the CSS property "border" or "border-color".

```
.border, #border, table{ border:4px solid rgb(199, 176, 183) }
```

If only the border color should be changed use the property `border-color`.

```
.border{ border-color:rgb(199, 176, 183) }
```

If you want to add a box shadow in that color use:

Here you see how a box with a 4 pixel `rgb(199, 176, 183)` colored shadow looks like.

```
.boxshadow{ -moz-box-shadow:4px 4px 4px  
4px rgb(199, 176, 183); -webkit-box-  
shadow:4px 4px 4px 4px rgb(199, 176, 183);  
box-shadow:4px 4px 4px 4px rgb(199, 176,  
183) }
```

Background

The CSS property to change the background color of an element to CIELCh 74, 9.475, 356.719 is called "background". The background property can be set on classes, ids or directly on the HTML element.

```
.background, #background, body{  
background: rgb(199, 176, 183) }
```

If only the background color should be changed can be used:

```
.background{ background-color: rgb(199,  
176, 183) }
```

This example shows the color as background, it is applied via the CSS property "background".

To optimize and compress your CSS code, you can use our [online CSS compressor and optimizer](#) based on csstidy. If you want to create a linear or radial gradient as background or border, check our [CSS Gradient Generator](#).

Hey! You found this booklet interesting? Support Converting Colors with the new Membership Option!

The pro membership hides all ads, plus gives you double the colors in the color bucket, and more awesome pro features!

[Learn more, Memberships starting at \\$2.50/m!](#)

**Follow me
on Twitter!**

@ConvertingColor