

Converting Colors

CIELCh(75, 11.513, 20.333)

Have a look what the booklet for
CIELCh(75, 11.513, 20.333) contains.

CIELCh(75, 11.513, 20.333)	3
<i>Conversions</i>	4
<i>Details</i>	6
<i>Harmonies</i>	11
<i>Previews</i>	20
<i>Color Blindness Simulation</i>	23
<i>CSS Examples</i>	26

Color

CIELCh(75, 11.513, 20.333)

Conversions

Conversions Part 1

Format	Color
Hex	D0B2B2
RGB	208, 178, 178
RGB Percent	82%, 70%, 70%
CMY	0.1856, 0.3032, 0.3032
CMYK	0.00, 0.14, 0.14, 0.19
HSL	0°, 24%, 76%
HSV	0°, 14%, 81%
XYZ	49.7809, 48.2781, 48.6473
YIQ	186.9700, 17.8800, 6.3600

Conversions

Conversions Part 2

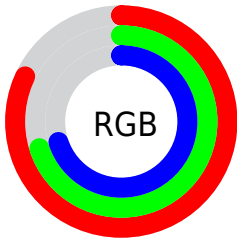
Format	Color
R _Y B	208, 178, 178
Decimal	13677234
CIE Lab	75.00, 10.80, 4.00
CIE LCh	75, 11.513, 20.333
Yxy	48.2781, 0.3393, 0.3291
Android (android.graphics.Color)	4291867314 (0xFFD0B2B2)
YUV	186.9700, -4.4222, 18.4433
Hunter-Lab	69.4824, 6.2927, 7.1265

Details

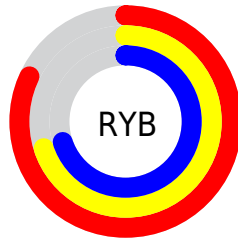
The CIELCh color **75, 11.513, 20.333** is a light color, and the websafe version is hex **CC9999**. A complement of this color would be **81, 10.494, 198.697**, and the grayscale version is **76, 0.009, 296.813**.

A 20% lighter version of the original color is **94, 7.572, 19.841**, and **55, 11.532, 20.634** is the 20% darker color. If you saturate the color by 10%, you get **69, 20.257, 21.281**, and if you desaturate by 10%, it is **81, 3.403, 19.516**.

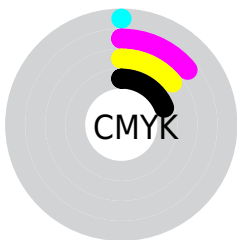
Distribution



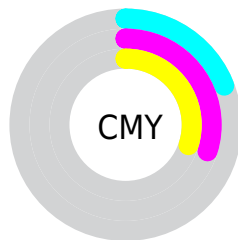
- Red (82%)
- Green (70%)
- Blue (70%)



- Red (82%)
- Yellow (70%)
- Blue (70%)



- Cyan (0%)
- Magenta (14%)
- Yellow (14%)
- Black (19%)



- Cyan (19%)
- Magenta (30%)
- Yellow (30%)

Brightness & Saturation Gradients

These gradients show how the CIELCh color 75, 11.513, 20.333 changes by changing the brightness by 10 percent. The first figure shows a shift by +10% for each color and the second figure -10%.

Similar to the brightness gradients but the following saturation gradients show a change of the CIELCh color 75, 11.513, 20.333 by changing the saturation by 10% instead.

75, 11.513, 20.333

75, 11.513, 20.333

100, 11.513,
20.333

65, 11.513, 20.333

95, 11.513, 20.333

55, 11.513, 20.333

45, 11.513, 20.333

35, 11.513, 20.333

25, 11.513, 20.333

15, 11.513, 20.333

5, 11.513, 20.333

0, 11.513, 20.333

75, 11.513, 20.333

75, 11.513, 20.333

69, 20.257, 21.281

81, 3.403, 19.516

64, 29.624, 22.487

87, 4.095, 199.268

59, 39.533, 24.058

93, 11.031,
198.744

54, 49.813, 26.107

97, 15.730,
198.459

50, 60.190, 28.732

47, 70.286, 31.952

45, 79.509, 35.526

44, 86.600, 38.632

43, 89.577, 40.001

Harmonies

Complementary

The Complementary color scheme is a pair of colors which are on the opposite of each other on the color wheel.



75, 11.513, 20.333



81, 10.494, 198.697

Rectangle

The Rectangle color scheme consists of four colors that form a rectangle on the color wheel.



75, 11.513, 20.333



75, 11.513, 70.333



75, 11.513, 200.333



75, 11.513, 250.333

Sweetspot

The Sweet Spot groups the original color and five complimentary colors.



75, 11.511, 20.343



97, 3.616, 19.476



76, 19.517, 325.218



51, 2.578, 19.552



0, 0.000, 0.000



53, 0.007, 296.813

Same Dimension

The Same Dimension uses a secret algorithm to generate beautiful new colors.



75, 11.511, 20.343



88, 16.184, 20.581



79, 9.841, 73.620



41, 4.459, 19.936



35, 76.454, 39.865



4, 20.017, 19.472

Inverse Universe

The Inverse Universe completely reimagines the original color for something new.



81, 10.494, 198.697



97, 14.476, 198.551



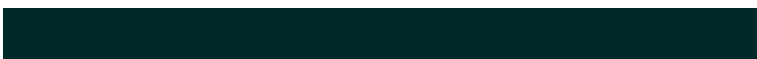
77, 9.489, 257.416



43, 4.203, 198.985



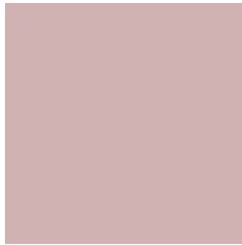
62, 36.706, 196.404



14, 14.037, 196.400

Previews

White Background



This preview shows how the CIELCh color 75, 11.513, 20.333 looks on a white background.

Color Contrast Check

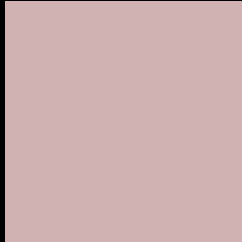
Large Text (above 18pt) WCAG AA × Fail

Any Text WCAG AA × Fail

Large Text (above 18pt) WCAG AAA × Fail

Any Text WCAG AAA × Fail

Black Background



This preview shows how the CIE LCh color 75, 11.513, 20.333 looks on a black background.

Color Contrast Check

Large Text (above 18pt) WCAG AA ✓ Pass

Any Text WCAG AA ✓ Pass

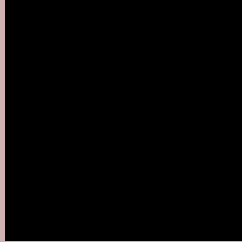
Large Text (above 18pt) WCAG AAA ✓ Pass

Any Text WCAG AAA ✓ Pass

If you want to check with other color combinations, try the [Color Contrast Checker](#).

CIELCh 75, 11.513, 20.333

Background



This preview shows how black text looks on a background with the CIELCh color 75, 11.513, 20.333.



This preview shows how white text looks on a background with the CIELCh color 75, 11.513, 20.333.

Color Blindness Simulation

Color vision deficiency is a very complex topic, and I could not describe the different causes any better than Wikipedia does, so if you want to learn more, you should check out their [article about color blindness](#).

Dichromacy



Original Color

75, 11.513, 20.333

Protanopia

75, 2.460, 60.275

Deuteranopia

75, 9.972, 23.260



Tritanopia
75, 14.487, 349.375

Trichromacy



Original Color
75, 11.513, 20.333

Protanomaly
75, 5.402, 31.197

Deuteranomaly
75, 10.363, 23.177

Tritanomaly
75, 13.021, 358.755

Monochromacy



Original Color
75, 11.513, 20.333

Achromatopsia
76, 0.009, 296.813

Achromatomaly
76, 4.127, 19.617

CSS Examples

Text

The CSS property to change the color of the text to CIELCh 75, 11.513, 20.333 is called "color". The color property can be set on classes, ids or directly on the HTML element.

This example shows how text in the color `rgb(208, 178, 178)` looks like.

```
.text, #text, p{  
    color:rgb(208, 178, 178)  
}
```

If you want to add a text shadow in that color use the text-shadow property, you can generate a text shadow directly with our [CSS Text Shadow Generator](#).

Here you see how black text with a 4 pixel rgb(208, 178, 178) colored shadow looks like.

```
.shadow{ text-shadow: 4px 4px 2px rgb(208, 178, 178) }
```

Border

The CSS property to change the border of an element to CIELCh 75, 11.513, 20.333 is called "border". The border property can be set on classes, ids or directly on the HTML element.

This example shows the color as border, it can be applied via the CSS property "border" or "border-color".

```
.border, #border, table{ border:4px solid rgb(208, 178, 178) }
```

If only the border color should be changed use the property `border-color`.

```
.border{ border-color:rgb(208, 178, 178) }
```

If you want to add a box shadow in that color use:

Here you see how a box with a 4 pixel `rgb(208, 178, 178)` colored shadow looks like.

```
.boxshadow{ -moz-box-shadow:4px 4px 4px  
4px rgb(208, 178, 178); -webkit-box-  
shadow:4px 4px 4px 4px rgb(208, 178, 178);  
box-shadow:4px 4px 4px 4px rgb(208, 178,  
178) }
```

Background

The CSS property to change the background color of an element to CIELCh 75, 11.513, 20.333 is called "background". The background property can be set on classes, ids or directly on the HTML element.

```
.background, #background, body{  
background: rgb(208, 178, 178) }
```

If only the background color should be changed can be used:

```
.background{ background-color: rgb(208,  
178, 178) }
```

This example shows the color as background, it is applied via the CSS property "background".

To optimize and compress your CSS code, you can use our [online CSS compressor and optimizer](#) based on csstidy. If you want to create a linear or radial gradient as background or border, check our [CSS Gradient Generator](#).

Hey! You found this booklet interesting? Support Converting Colors with the new Membership Option!

The pro membership hides all ads, plus gives you double the colors in the color bucket, and more awesome pro features!

[Learn more, Memberships starting at \\$2.50/m!](#)

**Follow me
on Twitter!**

@ConvertingColor