

Converting Colors

CIELCh(75, 11.517, 37.744)

Have a look what the booklet for
CIELCh(75, 11.517, 37.744) contains.

CIELCh(75, 11.522, 39.171)	3
<i>Conversions</i>	4
<i>Details</i>	6
<i>Harmonies</i>	11
<i>Previews</i>	20
<i>Color Blindness Simulation</i>	23
<i>CSS Examples</i>	26

Color

CIELCh(75, 11.522, 39.171)

Conversions

Conversions Part 1

Format	Color
Hex	CFB3AC
RGB	207, 179, 172
RGB Percent	81%, 70%, 67%
CMY	0.1897, 0.2994, 0.3269
CMYK	0.00, 0.14, 0.17, 0.19
HSL	12°, 27%, 74%
HSV	12°, 17%, 81%
XYZ	49.0938, 48.2781, 45.5857
YIQ	186.5740, 18.9350, 3.7590

Conversions

Conversions Part 2

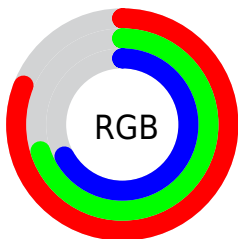
Format	Color
RYB	207, 181, 172
Decimal	13611948
CIELab	75.00, 8.93, 7.28
CIELCh	75, 11.522, 39.171
Yxy	48.2781, 0.3434, 0.3377
Android (android.graphics.Color)	4291802028 (0xFFCFB3AC)
YUV	186.5740, -7.1850, 17.9136
Hunter-Lab	69.4824, 4.5274, 9.7390

Details

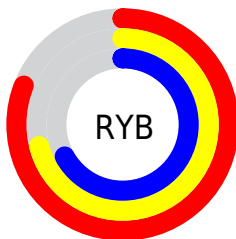
The CIELCh color **75, 11.522, 39.171** is a light color, and the websafe version is hex **CC9999**. A complement of this color would be **79, 10.324, 220.118**, and the grayscale version is **76, 0.009, 296.813**.

A 20% lighter version of the original color is **94, 8.358, 49.072**, and **55, 11.411, 37.851** is the 20% darker color. If you saturate the color by 10%, you get **70, 19.105, 39.199**, and if you desaturate by 10%, it is **80, 4.526, 39.231**.

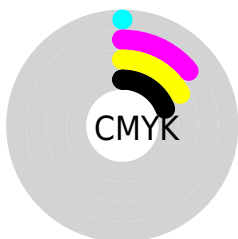
Distribution



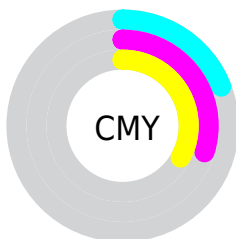
- Red (81%)
- Green (70%)
- Blue (67%)



- Red (81%)
- Yellow (71%)
- Blue (67%)



- Cyan (0%)
- Magenta (14%)
- Yellow (17%)
- Black (19%)



- Cyan (19%)
- Magenta (30%)
- Yellow (33%)


Brightness & Saturation Gradients

These gradients show how the CIELCh color 75, 11.522, 39.171 changes by changing the brightness by 10 percent. The first figure shows a shift by +10% for each color and the second figure -10%.

Similar to the brightness gradients but the following saturation gradients show a change of the CIELCh color 75, 11.522, 39.171 by changing the saturation by 10% instead.

 75, 11.522, 39.171

 75, 11.522, 39.171

 100, 11.522,
39.171

 65, 11.522, 39.171

 95, 11.522, 39.171

 55, 11.522, 39.171

 45, 11.522, 39.171

 35, 11.522, 39.171

 25, 11.522, 39.171

 15, 11.522, 39.171

 5, 11.522, 39.171

 0, 11.522, 39.171

 75, 11.522, 39.171

 75, 11.522, 39.171

70, 19.105, 39.199

80, 4.526, 39.231

66, 27.315, 39.360

84, 1.930, 219.855

62, 36.160, 39.709

89, 7.902, 219.916

58, 45.600, 40.282

94, 13.446,
220.213

54, 55.506, 41.088

97, 16.053,
198.439

51, 65.577, 42.060

48, 75.126, 42.945

46, 82.788, 43.178

45, 84.895, 43.323

Harmonies

Complementary

The Complementary color scheme is a pair of colors which are on the opposite of each other on the color wheel.



75, 11.522, 39.171



79, 10.324, 220.118

Rectangle

The Rectangle color scheme consists of four colors that form a rectangle on the color wheel.



75, 11.522, 39.171



75, 11.522, 89.171



75, 11.522, 219.171



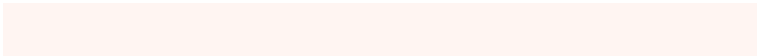
75, 11.522, 269.171

Sweetspot

The Sweet Spot groups the original color and five complimentary colors.



75, 11.521, 39.183



97, 3.843, 39.218



74, 19.870, 331.577



51, 2.630, 39.226



0, 0.000, 0.000



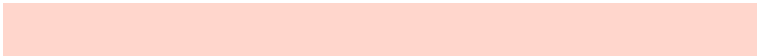
53, 0.007, 296.813

Same Dimension

The Same Dimension uses a secret algorithm to generate beautiful new colors.



75, 11.521, 39.183



89, 16.366, 39.175



79, 13.619, 91.598



42, 3.780, 39.224



37, 72.523, 43.676



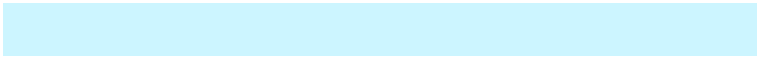
6, 17.774, 30.455

Inverse Universe

The Inverse Universe completely reimagines the original color for something new.



79, 10.324, 220.118



94, 14.322, 220.276



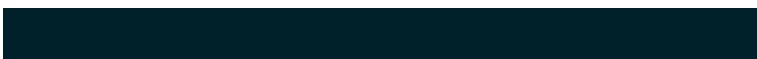
74, 13.661, 276.011



43, 3.565, 219.852



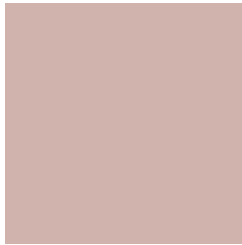
52, 32.166, 235.291



11, 12.197, 226.875

Previews

White Background



This preview shows how the CIELCh color 75, 11.522, 39.171 looks on a white background.

Color Contrast Check

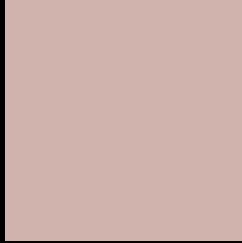
Large Text (above 18pt) WCAG AA × Fail

Any Text WCAG AA × Fail

Large Text (above 18pt) WCAG AAA × Fail

Any Text WCAG AAA × Fail

Black Background



This preview shows how the CIELCh color 75, 11.522, 39.171 looks on a black background.

Color Contrast Check

Large Text (above 18pt) WCAG AA ✓ Pass

Any Text WCAG AA ✓ Pass

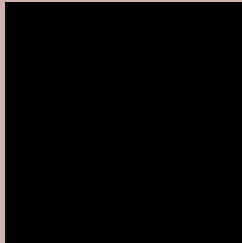
Large Text (above 18pt) WCAG AAA ✓ Pass

Any Text WCAG AAA ✓ Pass

If you want to check with other color combinations, try the [Color Contrast Checker](#).

CIELCh 75, 11.522, 39.171

Background



This preview shows how black text looks on a background with the CIELCh color 75, 11.522, 39.171.

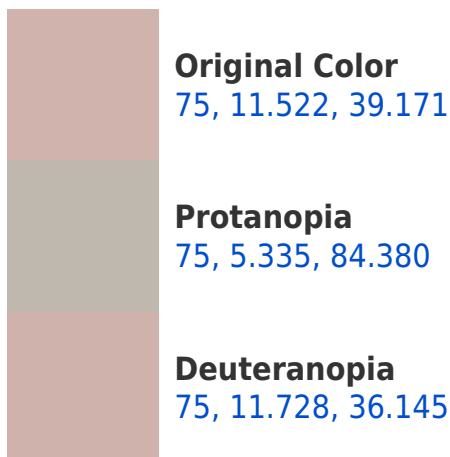


This preview shows how white text looks on a background with the CIELCh color 75, 11.522, 39.171.

Color Blindness Simulation

Color vision deficiency is a very complex topic, and I could not describe the different causes any better than Wikipedia does, so if you want to learn more, you should check out their [article about color blindness](#).

Dichromacy





Tritanopia
75, 14.487, 349.375

Trichromacy



Original Color
75, 11.522, 39.171

Protanomaly
75, 6.869, 58.383

Deuteranomaly
75, 11.728, 36.145

Tritanomaly
75, 12.206, 5.152

Monochromacy



Original Color
75, 11.522, 39.171

Achromatopsia
76, 0.009, 296.813

Achromatomaly
75, 4.277, 34.153

CSS Examples

Text

The CSS property to change the color of the text to CIELCh 75, 11.522, 39.171 is called "color". The color property can be set on classes, ids or directly on the HTML element.

This example shows how text in the color `rgb(207, 179, 172)` looks like.

```
.text, #text, p{  
    color:rgb(207, 179, 172)  
}
```

If you want to add a text shadow in that color use the text-shadow property, you can generate a text shadow directly with our [CSS Text Shadow Generator](#).

Here you see how black text with a 4 pixel rgb(207, 179, 172) colored shadow looks like.

```
.shadow{ text-shadow: 4px 4px 2px rgb(207, 179, 172) }
```

Border

The CSS property to change the border of an element to CIELCh 75, 11.522, 39.171 is called "border". The border property can be set on classes, ids or directly on the HTML element.

This example shows the color as border, it can be applied via the CSS property "border" or "border-color".

```
.border, #border, table{ border:4px solid rgb(207, 179, 172) }
```

If only the border color should be changed use the property `border-color`.

```
.border{ border-color:rgb(207, 179, 172) }
```

If you want to add a box shadow in that color use:

Here you see how a box with a 4 pixel `rgb(207, 179, 172)` colored shadow looks like.

```
.boxshadow{ -moz-box-shadow:4px 4px 4px  
4px rgb(207, 179, 172); -webkit-box-  
shadow:4px 4px 4px 4px rgb(207, 179, 172);  
box-shadow:4px 4px 4px 4px rgb(207, 179,  
172) }
```

Background

The CSS property to change the background color of an element to CIELCh 75, 11.522, 39.171 is called "background". The background property can be set on classes, ids or directly on the HTML element.

```
.background, #background, body{  
background: rgb(207, 179, 172) }
```

If only the background color should be changed can be used:

```
.background{ background-color: rgb(207,  
179, 172) }
```

This example shows the color as background, it is applied via the CSS property "background".

To optimize and compress your CSS code, you can use our [online CSS compressor and optimizer](#) based on csstidy. If you want to create a linear or radial gradient as background or border, check our [CSS Gradient Generator](#).

Hey! You found this booklet interesting? Support Converting Colors with the new Membership Option!

The pro membership hides all ads, plus gives you double the colors in the color bucket, and more awesome pro features!

[Learn more, Memberships starting at \\$2.50/m!](#)

**Follow me
on Twitter!**

@ConvertingColor