

Converting Colors

CIELCh(75, 12.203, 40.595)

Have a look what the booklet for
CIELCh(75, 12.203, 40.595) contains.

CIELCh(75, 12.495, 40.300)	3
<i>Conversions</i>	4
<i>Details</i>	6
<i>Harmonies</i>	11
<i>Previews</i>	20
<i>Color Blindness Simulation</i>	23
<i>CSS Examples</i>	26

Color

CIELCh(75, 12.495, 40.300)

Conversions

Conversions Part 1

Format	Color
Hex	D0B2AA
RGB	208, 178, 170
RGB Percent	82%, 70%, 67%
CMY	0.1834, 0.3011, 0.3325
CMYK	0.00, 0.14, 0.18, 0.18
HSL	13°, 29%, 74%
HSV	13°, 18%, 82%
XYZ	49.3133, 48.2781, 44.8549
YIQ	186.0580, 20.4480, 3.8720

Conversions

Conversions Part 2

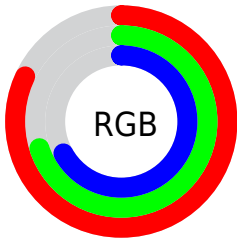
Format	Color
R _Y B	208, 180, 170
Decimal	13677226
CIE Lab	75.00, 9.53, 8.08
CIE LCh	75, 12.495, 40.300
Yxy	48.2781, 0.3462, 0.3389
Android (android.graphics.Color)	4291867306 (0xFFD0B2AA)
YUV	186.0580, -7.9166, 19.2431
Hunter-Lab	69.4824, 5.0912, 10.3627

Details

The CIELCh color **75, 12.495, 40.300** is a light color, and the websafe version is hex **CC9999**. A complement of this color would be **79, 11.102, 221.503**, and the grayscale version is **76, 0.009, 296.813**.

A 20% lighter version of the original color is **94, 8.956, 50.726**, and **55, 12.466, 39.165** is the 20% darker color. If you saturate the color by 10%, you get **70, 20.159, 40.285**, and if you desaturate by 10%, it is **80, 5.422, 40.415**.

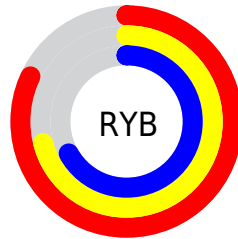
Distribution



Red (82%)

Green (70%)

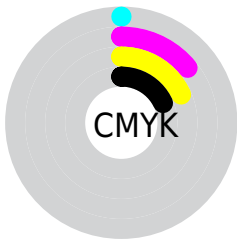
Blue (67%)



Red (82%)

Yellow (71%)

Blue (67%)

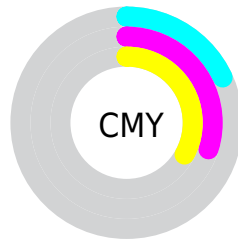


Cyan (0%)

Magenta (14%)

Yellow (18%)

Black (18%)



Cyan (18%)

Magenta (30%)

Yellow (33%)

Brightness & Saturation Gradients

These gradients show how the CIELCh color 75, 12.495, 40.300 changes by changing the brightness by 10 percent. The first figure shows a shift by +10% for each color and the second figure -10%.

Similar to the brightness gradients but the following saturation gradients show a change of the CIELCh color 75, 12.495, 40.300 by changing the saturation by 10% instead.

75, 12.495, 40.300

75, 12.495, 40.300

100, 12.495,
40.300

65, 12.495, 40.300

95, 12.495, 40.300

55, 12.495, 40.300

45, 12.495, 40.300

35, 12.495, 40.300

25, 12.495, 40.300

15, 12.495, 40.300

5, 12.495, 40.300

0, 12.495, 40.300

75, 12.495, 40.300

75, 12.495, 40.300

70, 20.159, 40.285

80, 5.422, 40.415

66, 28.453, 40.402

84, 1.106, 221.273

62, 37.383, 40.704

89, 7.145, 221.164

58, 46.903, 41.222

94, 12.752,
221.493

54, 56.870, 41.953

97, 15.558,
198.471

51, 66.947, 42.815

48, 76.370, 43.516

46, 83.803, 43.558

46, 85.018, 43.636

Harmonies

Complementary

The Complementary color scheme is a pair of colors which are on the opposite of each other on the color wheel.



75, 12.495, 40.300



79, 11.102, 221.503

Rectangle

The Rectangle color scheme consists of four colors that form a rectangle on the color wheel.



75, 12.495, 40.300



75, 12.495, 90.300



75, 12.495, 220.300



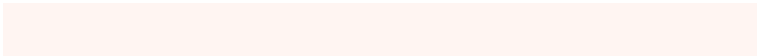
75, 12.495, 270.300

Sweetspot

The Sweet Spot groups the original color and five complimentary colors.



75, 12.494, 40.311



97, 3.822, 40.420



74, 21.567, 331.664



51, 2.615, 40.425



0, 0.000, 0.000



53, 0.007, 296.813

Same Dimension

The Same Dimension uses a secret algorithm to generate beautiful new colors.



75, 12.494, 40.311



88, 18.047, 40.286



80, 14.793, 91.430



42, 3.758, 40.404



37, 72.195, 44.017



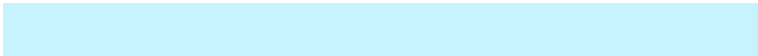
6, 17.671, 31.115

Inverse Universe

The Inverse Universe completely reimagines the original color for something new.



79, 11.102, 221.503



93, 15.581, 221.732



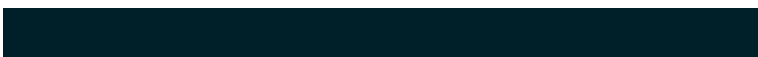
74, 14.839, 276.217



43, 3.547, 221.126



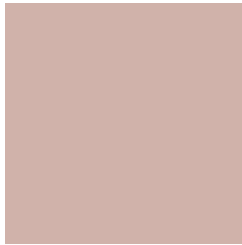
51, 32.350, 237.564



11, 12.199, 228.710

Previews

White Background



This preview shows how the CIELCh color 75, 12.495, 40.300 looks on a white background.

Color Contrast Check

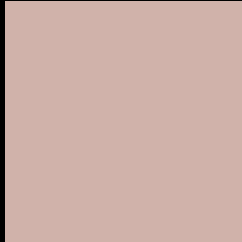
Large Text (above 18pt) WCAG AA × Fail

Any Text WCAG AA × Fail

Large Text (above 18pt) WCAG AAA × Fail

Any Text WCAG AAA × Fail

Black Background



This preview shows how the CIELCh color 75, 12.495, 40.300 looks on a black background.

Color Contrast Check

Large Text (above 18pt) WCAG AA ✓ Pass

Any Text WCAG AA ✓ Pass

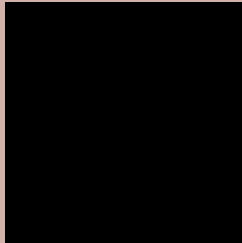
Large Text (above 18pt) WCAG AAA ✓ Pass

Any Text WCAG AAA ✓ Pass

If you want to check with other color combinations, try the [Color Contrast Checker](#).

CIELCh 75, 12.495, 40.300

Background



This preview shows how black text looks on a background with the CIELCh color 75, 12.495, 40.300.



This preview shows how white text looks on a background with the CIELCh color 75, 12.495, 40.300.

Color Blindness Simulation

Color vision deficiency is a very complex topic, and I could not describe the different causes any better than Wikipedia does, so if you want to learn more, you should check out their [article about color blindness](#).

Dichromacy



Original Color

75, 12.495, 40.300

Protanopia

75, 6.477, 85.201

Deuteranopia

75, 12.495, 40.300



Tritanopia
75, 15.483, 351.709

Trichromacy



Original Color
75, 12.495, 40.300

Protanomaly
75, 7.888, 62.561

Deuteranomaly
75, 12.495, 40.300

Tritanomaly
75, 13.344, 6.600

Monochromacy



Original Color
75, 12.495, 40.300

Achromatopsia
76, 0.009, 296.813

Achromatomaly
75, 4.448, 40.840

CSS Examples

Text

The CSS property to change the color of the text to CIELCh 75, 12.495, 40.300 is called "color". The color property can be set on classes, ids or directly on the HTML element.

This example shows how text in the color `rgb(208, 178, 170)` looks like.

```
.text, #text, p{  
    color:rgb(208, 178, 170)  
}
```

If you want to add a text shadow in that color use the text-shadow property, you can generate a text shadow directly with our [CSS Text Shadow Generator](#).

Here you see how black text with a 4 pixel rgb(208, 178, 170) colored shadow looks like.

```
.shadow{ text-shadow: 4px 4px 2px rgb(208, 178, 170) }
```

Border

The CSS property to change the border of an element to CIELCh 75, 12.495, 40.300 is called "border". The border property can be set on classes, ids or directly on the HTML element.

This example shows the color as border, it can be applied via the CSS property "border" or "border-color".

```
.border, #border, table{ border:4px solid rgb(208, 178, 170) }
```

If only the border color should be changed use the property `border-color`.

```
.border{ border-color:rgb(208, 178, 170) }
```

If you want to add a box shadow in that color use:

Here you see how a box with a 4 pixel `rgb(208, 178, 170)` colored shadow looks like.

```
.boxshadow{ -moz-box-shadow:4px 4px 4px  
4px rgb(208, 178, 170); -webkit-box-  
shadow:4px 4px 4px 4px rgb(208, 178, 170);  
box-shadow:4px 4px 4px 4px rgb(208, 178,  
170) }
```

Background

The CSS property to change the background color of an element to CIELCh 75, 12.495, 40.300 is called "background". The background property can be set on classes, ids or directly on the HTML element.

```
.background, #background, body{  
background: rgb(208, 178, 170) }
```

If only the background color should be changed can be used:

```
.background{ background-color: rgb(208,  
178, 170) }
```

This example shows the color as background, it is applied via the CSS property "background".

To optimize and compress your CSS code, you can use our [online CSS compressor and optimizer](#) based on csstidy. If you want to create a linear or radial gradient as background or border, check our [CSS Gradient Generator](#).

Hey! You found this booklet interesting? Support Converting Colors with the new Membership Option!

The pro membership hides all ads, plus gives you double the colors in the color bucket, and more awesome pro features!

[Learn more, Memberships starting at \\$2.50/m!](#)

**Follow me
on Twitter!**

@ConvertingColor