

Converting Colors

CIELCh(75, 13.090, 41.866)

Have a look what the booklet for
CIELCh(75, 13.090, 41.866) contains.

CIELCh(75, 13.090, 41.866)	3
<i>Conversions</i>	4
<i>Details</i>	6
<i>Harmonies</i>	11
<i>Previews</i>	20
<i>Color Blindness Simulation</i>	23
<i>CSS Examples</i>	26

Color

CIELCh(75, 13.090, 41.866)

Conversions

Conversions Part 1

Format	Color
Hex	D1B2A9
RGB	209, 178, 169
RGB Percent	82%, 70%, 66%
CMY	0.1803, 0.3018, 0.3371
CMYK	0.00, 0.15, 0.19, 0.18
HSL	14°, 30%, 74%
HSV	14°, 19%, 82%
XYZ	49.3938, 48.2781, 44.2656
YIQ	186.2430, 21.3650, 3.7730

Conversions

Conversions Part 2

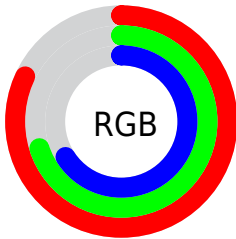
Format	Color
R _Y B	209, 181, 169
Decimal	13742761
CIE Lab	75.00, 9.75, 8.74
CIE LCh	75, 13.090, 41.866
Yxy	48.2781, 0.3480, 0.3401
Android (android.graphics.Color)	4291932841 (0xFFD1B2A9)
YUV	186.2430, -8.5008, 19.9579
Hunter-Lab	69.4824, 5.2982, 10.8655

Details

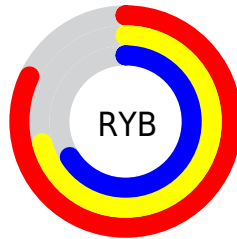
The CIELCh color **75, 13.090, 41.866** is a light color, and the websafe version is hex **CC9999**. A complement of this color would be **79, 11.578, 223.401**, and the grayscale version is **76, 0.009, 296.813**.

A 20% lighter version of the original color is **94, 9.242, 53.391**, and **55, 13.105, 40.873** is the 20% darker color. If you saturate the color by 10%, you get **71, 20.770, 41.779**, and if you desaturate by 10%, it is **80, 6.000, 42.054**.

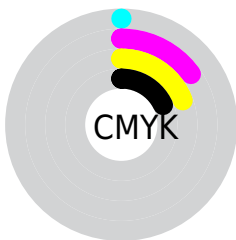
Distribution



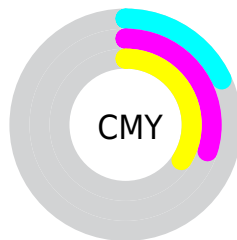
- Red (82%)
- Green (70%)
- Blue (66%)



- Red (82%)
- Yellow (71%)
- Blue (66%)



- Cyan (0%)
- Magenta (15%)
- Yellow (19%)
- Black (18%)



- Cyan (18%)
- Magenta (30%)
- Yellow (34%)

Brightness & Saturation Gradients

These gradients show how the CIELCh color 75, 13.090, 41.866 changes by changing the brightness by 10 percent. The first figure shows a shift by +10% for each color and the second figure -10%.

Similar to the brightness gradients but the following saturation gradients show a change of the CIELCh color 75, 13.090, 41.866 by changing the saturation by 10% instead.

75, 13.090, 41.866

75, 13.090, 41.866

100, 13.090,
41.866

65, 13.090, 41.866

95, 13.090, 41.866

55, 13.090, 41.866

45, 13.090, 41.866

35, 13.090, 41.866

25, 13.090, 41.866

15, 13.090, 41.866

5, 13.090, 41.866

0, 13.090, 41.866

75, 13.090, 41.866

75, 13.090, 41.866

71, 20.770, 41.779

80, 6.000, 42.054

66, 29.077, 41.819

84, 0.548, 223.470

62, 38.017, 42.035

89, 6.609, 222.918

58, 47.542, 42.450

94, 12.239,
223.298

55, 57.501, 43.057

97, 15.303,
198.487

51, 67.535, 43.755

49, 76.823, 44.230

47, 84.125, 44.078

46, 84.732, 44.107

Harmonies

Complementary

The Complementary color scheme is a pair of colors which are on the opposite of each other on the color wheel.



75, 13.090, 41.866



79, 11.578, 223.401

Rectangle

The Rectangle color scheme consists of four colors that form a rectangle on the color wheel.



75, 13.090, 41.866



75, 13.090, 91.866



75, 13.090, 221.866



75, 13.090, 271.866

Sweetspot

The Sweet Spot groups the original color and five complimentary colors.



75, 13.089, 41.877



97, 4.572, 42.094



74, 22.425, 332.332



51, 3.041, 42.088



0, 0.000, 0.000



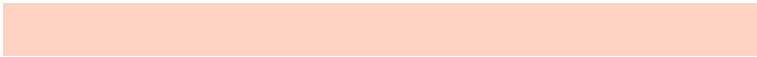
53, 0.007, 296.813

Same Dimension

The Same Dimension uses a secret algorithm to generate beautiful new colors.



75, 13.089, 41.877



88, 18.802, 41.823



80, 15.821, 92.563



42, 3.731, 42.049



37, 71.726, 44.515



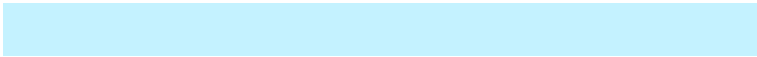
6, 17.534, 32.036

Inverse Universe

The Inverse Universe completely reimagines the original color for something new.



79, 11.578, 223.401



93, 16.148, 223.682



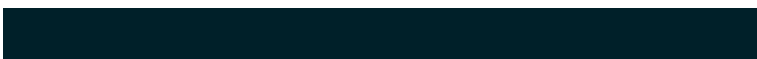
73, 15.926, 277.549



43, 3.524, 222.900



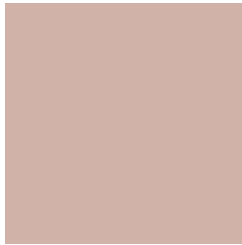
51, 32.679, 240.666



10, 12.220, 231.244

Previews

White Background



This preview shows how the CIELCh color 75, 13.090, 41.866 looks on a white background.

Color Contrast Check

Large Text (above 18pt) WCAG AA × Fail

Any Text WCAG AA × Fail

Large Text (above 18pt) WCAG AAA × Fail

Any Text WCAG AAA × Fail

Black Background



This preview shows how the CIELCh color 75, 13.090, 41.866 looks on a black background.

Color Contrast Check

Large Text (above 18pt) WCAG AA ✓ Pass

Any Text WCAG AA ✓ Pass

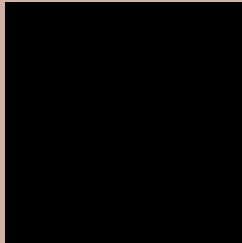
Large Text (above 18pt) WCAG AAA ✓ Pass

Any Text WCAG AAA ✓ Pass

If you want to check with other color combinations, try the [Color Contrast Checker](#).

CIELCh 75, 13.090, 41.866

Background



This preview shows how black text looks on a background with the CIELCh color 75, 13.090, 41.866.



This preview shows how white text looks on a background with the CIELCh color 75, 13.090, 41.866.

Color Blindness Simulation

Color vision deficiency is a very complex topic, and I could not describe the different causes any better than Wikipedia does, so if you want to learn more, you should check out their [article about color blindness](#).

Dichromacy



Original Color

75, 13.090, 41.866

Protanopia

75, 6.973, 86.939

Deuteranopia

75, 12.717, 42.507



Tritanopia
75, 15.483, 351.709

Trichromacy



Original Color
75, 13.090, 41.866

Protanomaly
75, 8.553, 63.334

Deuteranomaly
75, 12.717, 42.507

Tritanomaly
75, 13.344, 6.600

Monochromacy



Original Color
75, 13.090, 41.866

Achromatopsia
76, 0.009, 296.813

Achromatomaly
75, 4.448, 40.840

CSS Examples

Text

The CSS property to change the color of the text to CIELCh 75, 13.090, 41.866 is called "color". The color property can be set on classes, ids or directly on the HTML element.

This example shows how text in the color `rgb(209, 178, 169)` looks like.

```
.text, #text, p{  
    color:rgb(209, 178, 169)  
}
```

If you want to add a text shadow in that color use the text-shadow property, you can generate a text shadow directly with our [CSS Text Shadow Generator](#).

Here you see how black text with a 4 pixel rgb(209, 178, 169) colored shadow looks like.

```
.shadow{ text-shadow: 4px 4px 2px rgb(209, 178, 169) }
```

Border

The CSS property to change the border of an element to CIELCh 75, 13.090, 41.866 is called "border". The border property can be set on classes, ids or directly on the HTML element.

This example shows the color as border, it can be applied via the CSS property "border" or "border-color".

```
.border, #border, table{ border:4px solid rgb(209, 178, 169) }
```

If only the border color should be changed use the property `border-color`.

```
.border{ border-color:rgb(209, 178, 169) }
```

If you want to add a box shadow in that color use:

Here you see how a box with a 4 pixel `rgb(209, 178, 169)` colored shadow looks like.

```
.boxshadow{ -moz-box-shadow:4px 4px 4px  
4px rgb(209, 178, 169); -webkit-box-  
shadow:4px 4px 4px 4px rgb(209, 178, 169);  
box-shadow:4px 4px 4px 4px rgb(209, 178,  
169) }
```

Background

The CSS property to change the background color of an element to CIELCh 75, 13.090, 41.866 is called "background". The background property can be set on classes, ids or directly on the HTML element.

```
.background, #background, body{  
background: rgb(209, 178, 169) }
```

If only the background color should be changed can be used:

```
.background{ background-color: rgb(209,  
178, 169) }
```

This example shows the color as background, it is applied via the CSS property "background".

To optimize and compress your CSS code, you can use our [online CSS compressor and optimizer](#) based on csstidy. If you want to create a linear or radial gradient as background or border, check our [CSS Gradient Generator](#).

Hey! You found this booklet interesting? Support Converting Colors with the new Membership Option!

The pro membership hides all ads, plus gives you double the colors in the color bucket, and more awesome pro features!

[Learn more, Memberships starting at \\$2.50/m!](#)

**Follow me
on Twitter!**

@ConvertingColor