

Converting Colors

CIELCh(75, 13.753, 78.079)

Have a look what the booklet for
CIELCh(75, 13.753, 78.079) contains.

CIELCh(75, 13.826, 78.072)	3
<i>Conversions</i>	4
<i>Details</i>	6
<i>Harmonies</i>	11
<i>Previews</i>	20
<i>Color Blindness Simulation</i>	23
<i>CSS Examples</i>	26

Color

CIELCh(75, 13.826, 78.072)

Conversions

Conversions Part 1

Format	Color
Hex	C8B6A0
RGB	200, 182, 160
RGB Percent	78%, 71%, 63%
CMY	0.2157, 0.2862, 0.3725
CMYK	0.00, 0.09, 0.20, 0.22
HSL	33°, 27%, 71%
HSV	33°, 20%, 78%
XYZ	46.8971, 48.2781, 40.1085
YIQ	184.8740, 17.7900, -3.0260

Conversions

Conversions Part 2

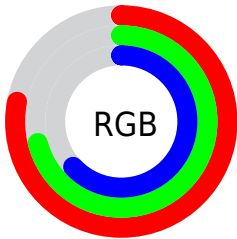
Format	Color
R_{YB}	193, 200, 160
Decimal	13153952
CIE _{Lab}	75.00, 2.86, 13.53
CIE _{LCh}	75, 13.826, 78.072
Yxy	48.2781, 0.3467, 0.3569
Android (android.graphics.Color)	4291344032 (0xFFC8B6A0)
YUV	184.8740, -12.2629, 13.2655
Hunter-Lab	69.4824, -1.1159, 14.4128

Details

The CIELCh color $75, 13.826, 78.072$ is a light color, and the websafe version is hex `CCCCCC`. A complement of this color would be $72, 13.333, 263.567$, and the grayscale version is $75, 0.009, 296.813$.

A 20% lighter version of the original color is $95, 13.358, 81.031$, and $55, 14.093, 77.628$ is the 20% darker color. If you saturate the color by 10%, you get $72, 21.145, 76.775$, and if you desaturate by 10%, it is $78, 6.779, 79.344$.

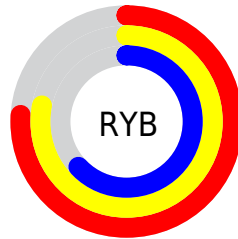
Distribution



Red (78%)

Green (71%)

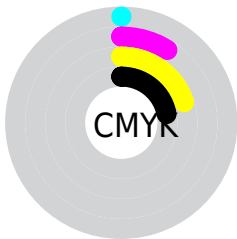
Blue (63%)



Red (76%)

Yellow (78%)

Blue (63%)

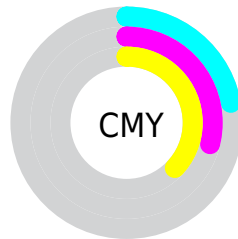


Cyan (0%)

Magenta (9%)

Yellow (20%)

Black (22%)



Cyan (22%)

Magenta (29%)

Yellow (37%)

Brightness & Saturation Gradients

These gradients show how the CIELCh color 75, 13.826, 78.072 changes by changing the brightness by 10 percent. The first figure shows a shift by +10% for each color and the second figure -10%.

Similar to the brightness gradients but the following saturation gradients show a change of the CIELCh color 75, 13.826, 78.072 by changing the saturation by 10% instead.

■ 75, 13.826, 78.072

■ 75, 13.826, 78.072

■ 100, 13.826,
78.072

■ 65, 13.826, 78.072

■ 95, 13.826, 78.072

■ 55, 13.826, 78.072

■ 45, 13.826, 78.072

■ 35, 13.826, 78.072

■ 25, 13.826, 78.072

■ 15, 13.826, 78.072

■ 5, 13.826, 78.072

■ 0, 13.826, 78.072

■ 75, 13.826, 78.072

■ 75, 13.826, 78.072

72, 21.145, 76.775

78, 6.779, 79.344

70, 28.731, 75.437

81, 0.011, 293.372

67, 36.545, 74.069

83, 6.558, 261.907

65, 44.485, 72.654

86, 12.891,
263.050

62, 52.322, 71.145

89, 16.812,
259.599

60, 59.607, 69.434

58, 65.579, 67.308

91, 15.133,
239.581

56, 69.792, 64.660

94, 15.512,
218.052

56, 69.793, 64.659

96, 17.760,
199.993

96, 18.098,
198.308

Harmonies

Complementary

The Complementary color scheme is a pair of colors which are on the opposite of each other on the color wheel.



75, 13.826, 78.072



72, 13.333, 263.567

Rectangle

The Rectangle color scheme consists of four colors that form a rectangle on the color wheel.



75, 13.826, 78.072



75, 13.826, 128.072



75, 13.826, 258.072



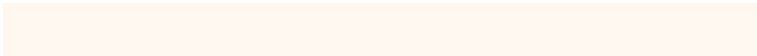
75, 13.826, 308.072

Sweetspot

The Sweet Spot groups the original color and five complimentary colors.



75, 13.827, 78.082



98, 4.915, 79.806



70, 18.068, 348.261



52, 3.265, 79.731



0, 0.000, 0.000



53, 0.007, 296.813

Same Dimension

The Same Dimension uses a secret algorithm to generate beautiful new colors.



75, 13.827, 78.082



92, 20.381, 77.518



80, 21.152, 110.376



41, 3.823, 79.419



46, 59.898, 65.242



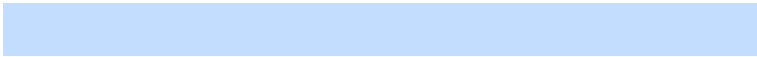
8, 13.054, 63.768

Inverse Universe

The Inverse Universe completely reimagines the original color for something new.



72, 13.333, 263.567



87, 19.477, 264.328



67, 22.146, 294.195



40, 3.768, 261.938



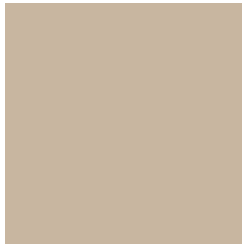
33, 56.505, 288.178



4, 14.832, 274.242

Previews

White Background



This preview shows how the CIELCh color 75, 13.826, 78.072 looks on a white background.

Color Contrast Check

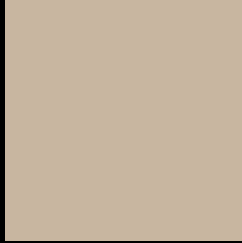
Large Text (above 18pt) WCAG AA × Fail

Any Text WCAG AA × Fail

Large Text (above 18pt) WCAG AAA × Fail

Any Text WCAG AAA × Fail

Black Background



This preview shows how the CIELCh color 75, 13.826, 78.072 looks on a black background.

Color Contrast Check

Large Text (above 18pt) WCAG AA ✓ Pass

Any Text WCAG AA ✓ Pass

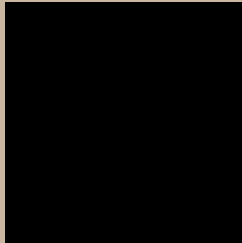
Large Text (above 18pt) WCAG AAA ✓ Pass

Any Text WCAG AAA ✓ Pass

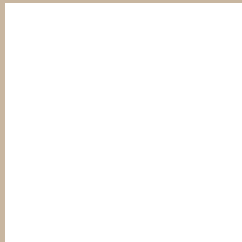
If you want to check with other color combinations, try the [Color Contrast Checker](#).

CIELCh 75, 13.826, 78.072

Background



This preview shows how black text looks on a background with the CIELCh color 75, 13.826, 78.072.

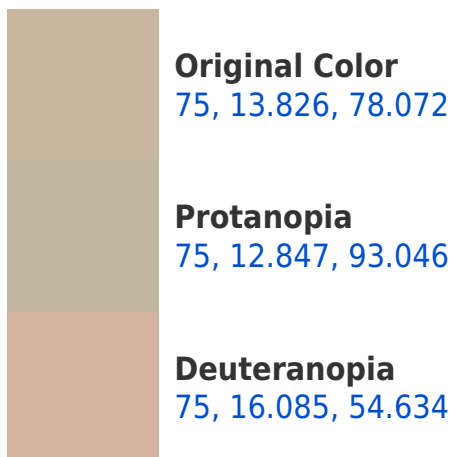


This preview shows how white text looks on a background with the CIELCh color 75, 13.826, 78.072.

Color Blindness Simulation

Color vision deficiency is a very complex topic, and I could not describe the different causes any better than Wikipedia does, so if you want to learn more, you should check out their [article about color blindness](#).

Dichromacy





Tritanopia
75, 12.602, 343.738

Trichromacy



Original Color
75, 13.826, 78.072

Protanomaly
75, 12.887, 85.672

Deuteranomaly
75, 14.803, 60.637

Tritanomaly
75, 9.155, 16.767

Monochromacy



Original Color
75, 13.826, 78.072

Achromatopsia
75, 0.009, 296.813

Achromatomaly
75, 4.851, 81.756

CSS Examples

Text

The CSS property to change the color of the text to CIELCh 75, 13.826, 78.072 is called "color". The color property can be set on classes, ids or directly on the HTML element.

This example shows how text in the color `rgb(200, 182, 160)` looks like.

```
.text, #text, p{  
    color:rgb(200, 182, 160)  
}
```

If you want to add a text shadow in that color use the text-shadow property, you can generate a text shadow directly with our [CSS Text Shadow Generator](#).

Here you see how black text with a 4 pixel rgb(200, 182, 160) colored shadow looks like.

```
.shadow{ text-shadow: 4px 4px 2px rgb(200, 182, 160) }
```

Border

The CSS property to change the border of an element to CIELCh 75, 13.826, 78.072 is called "border". The border property can be set on classes, ids or directly on the HTML element.

This example shows the color as border, it can be applied via the CSS property "border" or "border-color".

```
.border, #border, table{ border:4px solid rgb(200, 182, 160) }
```

If only the border color should be changed use the property border-color.

```
.border{ border-color:rgb(200, 182, 160) }
```

If you want to add a box shadow in that color use:

Here you see how a box with a 4 pixel rgb(200, 182, 160) colored shadow looks like.

```
.boxshadow{ -moz-box-shadow:4px 4px 4px  
4px rgb(200, 182, 160); -webkit-box-  
shadow:4px 4px 4px 4px rgb(200, 182, 160);  
box-shadow:4px 4px 4px 4px rgb(200, 182,  
160) }
```

Background

The CSS property to change the background color of an element to CIELCh 75, 13.826, 78.072 is called "background". The background property can be set on classes, ids or directly on the HTML element.

```
.background, #background, body{  
background: rgb(200, 182, 160) }
```

If only the background color should be changed can be used:

```
.background{ background-color: rgb(200,  
182, 160) }
```

This example shows the color as background, it is applied via the CSS property "background".

To optimize and compress your CSS code, you can use our [online CSS compressor and optimizer](#) based on csstidy. If you want to create a linear or radial gradient as background or border, check our [CSS Gradient Generator](#).

Hey! You found this booklet interesting? Support Converting Colors with the new Membership Option!

The pro membership hides all ads, plus gives you double the colors in the color bucket, and more awesome pro features!

[Learn more, Memberships starting at \\$2.50/m!](#)

**Follow me
on Twitter!**

@ConvertingColor