

Converting Colors

CIELCh(75, 14.076, 12.073)

Have a look what the booklet for
CIELCh(75, 14.076, 12.073) contains.

CIELCh(75, 13.950, 11.763)	3
<i>Conversions</i>	4
<i>Details</i>	6
<i>Harmonies</i>	11
<i>Previews</i>	20
<i>Color Blindness Simulation</i>	23
<i>CSS Examples</i>	26

Color

CIELCh(75, 13.950, 11.763)

Conversions

Conversions Part 1

Format	Color
Hex	D4B0B4
RGB	212, 176, 180
RGB Percent	83%, 69%, 71%
CMY	0.1691, 0.3102, 0.2945
CMYK	0.00, 0.17, 0.15, 0.17
HSL	353°, 29%, 76%
HSV	353°, 17%, 83%
XYZ	50.8488, 48.2781, 49.7597
YIQ	187.2200, 20.1720, 8.8760

Conversions

Conversions Part 2

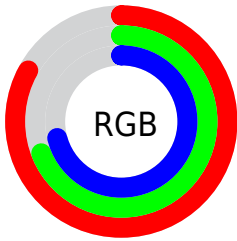
Format	Color
R _Y B	212, 176, 180
Decimal	13938868
CIE Lab	75.00, 13.66, 2.84
CIE LCh	75, 13.950, 11.763
Yxy	48.2781, 0.3415, 0.3243
Android (android.graphics.Color)	4292128948 (0xFFD4B0B4)
YUV	187.2200, -3.5595, 21.7321
Hunter-Lab	69.4824, 9.0359, 6.1773

Details

The CIELCh color **75, 13.950, 11.763** is a light color, and the websafe version is hex **CC9999**. A complement of this color would be **82, 12.789, 188.952**, and the grayscale version is **76, 0.009, 296.813**.

A 20% lighter version of the original color is **94, 8.528, 6.024**, and **55, 14.125, 11.733** is the 20% darker color. If you saturate the color by 10%, you get **69, 22.844, 12.973**, and if you desaturate by 10%, it is **81, 5.556, 10.738**.

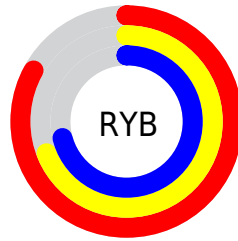
Distribution



Red (83%)

Green (69%)

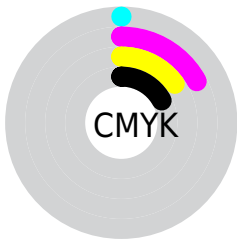
Blue (71%)



Red (83%)

Yellow (69%)

Blue (71%)

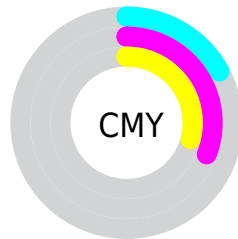


Cyan (0%)

Magenta (17%)

Yellow (15%)

Black (17%)



Cyan (17%)

Magenta (31%)

Yellow (29%)

Brightness & Saturation Gradients

These gradients show how the CIELCh color 75, 13.950, 11.763 changes by changing the brightness by 10 percent. The first figure shows a shift by +10% for each color and the second figure -10%.

Similar to the brightness gradients but the following saturation gradients show a change of the CIELCh color 75, 13.950, 11.763 by changing the saturation by 10% instead.

75, 13.950, 11.763

75, 13.950, 11.763

100, 13.950,
11.763

65, 13.950, 11.763

95, 13.950, 11.763

55, 13.950, 11.763

45, 13.950, 11.763

35, 13.950, 11.763

25, 13.950, 11.763

15, 13.950, 11.763

5, 13.950, 11.763

0, 13.950, 11.763

75, 13.950, 11.763

75, 13.950, 11.763

69, 22.844, 12.973

81, 5.556, 10.738

64, 32.172, 14.456

87, 2.316, 190.270

59, 41.786, 16.320

93, 9.686, 189.402

55, 51.445, 18.689

97, 14.403,
198.546

51, 60.833, 21.699

48, 69.619, 25.445

46, 77.527, 29.864

45, 84.257, 34.497

44, 86.084, 35.693

Harmonies

Complementary

The Complementary color scheme is a pair of colors which are on the opposite of each other on the color wheel.



75, 13.950, 11.763



82, 12.789, 188.952

Rectangle

The Rectangle color scheme consists of four colors that form a rectangle on the color wheel.



75, 13.950, 11.763



75, 13.950, 61.763



75, 13.950, 191.763



75, 13.950, 241.763

Sweetspot

The Sweet Spot groups the original color and five complimentary colors.



75, 13.948, 11.770



97, 4.594, 10.531



76, 22.577, 322.043



51, 3.141, 10.609



0, 0.000, 0.000



53, 0.007, 296.813

Same Dimension

The Same Dimension uses a secret algorithm to generate beautiful new colors.



75, 13.948, 11.770



87, 19.279, 12.133



78, 11.322, 60.200



42, 4.590, 10.985



35, 72.736, 34.984



5, 21.971, 14.816

Inverse Universe

The Inverse Universe completely reimagines the original color for something new.



75, 13.948, 11.770



87, 19.279, 12.133



79, 10.489, 243.867



42, 4.590, 10.985



35, 72.736, 34.984



5, 21.971, 14.816

Previews

White Background



This preview shows how the CIELCh color 75, 13.950, 11.763 looks on a white background.

Color Contrast Check

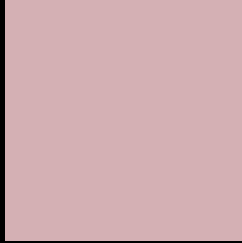
Large Text (above 18pt) WCAG AA × Fail

Any Text WCAG AA × Fail

Large Text (above 18pt) WCAG AAA × Fail

Any Text WCAG AAA × Fail

Black Background



This preview shows how the CIELCh color 75, 13.950, 11.763 looks on a black background.

Color Contrast Check

Large Text (above 18pt) WCAG AA ✓ Pass

Any Text WCAG AA ✓ Pass

Large Text (above 18pt) WCAG AAA ✓ Pass

Any Text WCAG AAA ✓ Pass

If you want to check with other color combinations, try the [Color Contrast Checker](#).

CIELCh 75, 13.950, 11.763

Background



This preview shows how black text looks on a background with the CIELCh color 75, 13.950, 11.763.



This preview shows how white text looks on a background with the CIELCh color 75, 13.950, 11.763.

Color Blindness Simulation

Color vision deficiency is a very complex topic, and I could not describe the different causes any better than Wikipedia does, so if you want to learn more, you should check out their [article about color blindness](#).

Dichromacy



Original Color

75, 13.950, 11.763

Protanopia

75, 1.491, 19.179

Deuteranopia

75, 9.937, 20.188



Tritanopia
75, 15.932, 354.849

Trichromacy



Original Color
75, 13.950, 11.763

Protanomaly
75, 6.128, 9.740

Deuteranomaly
75, 11.501, 17.673

Tritanomaly
75, 15.372, 0.343

Monochromacy



Original Color
75, 13.950, 11.763

Achromatopsia
76, 0.009, 296.813

Achromatomaly
75, 4.916, 13.440

CSS Examples

Text

The CSS property to change the color of the text to CIELCh 75, 13.950, 11.763 is called "color". The color property can be set on classes, ids or directly on the HTML element.

This example shows how text in the color `rgb(212, 176, 180)` looks like.

```
.text, #text, p{  
    color:rgb(212, 176, 180)  
}
```

If you want to add a text shadow in that color use the text-shadow property, you can generate a text shadow directly with our [CSS Text Shadow Generator](#).

Here you see how black text with a 4 pixel rgb(212, 176, 180) colored shadow looks like.

```
.shadow{ text-shadow: 4px 4px 2px rgb(212, 176, 180) }
```

Border

The CSS property to change the border of an element to CIELCh 75, 13.950, 11.763 is called "border". The border property can be set on classes, ids or directly on the HTML element.

This example shows the color as border, it can be applied via the CSS property "border" or "border-color".

```
.border, #border, table{ border:4px solid rgb(212, 176, 180) }
```

If only the border color should be changed use the property `border-color`.

```
.border{ border-color:rgb(212, 176, 180) }
```

If you want to add a box shadow in that color use:

Here you see how a box with a 4 pixel `rgb(212, 176, 180)` colored shadow looks like.

```
.boxshadow{ -moz-box-shadow:4px 4px 4px  
4px rgb(212, 176, 180); -webkit-box-  
shadow:4px 4px 4px 4px rgb(212, 176, 180);  
box-shadow:4px 4px 4px 4px rgb(212, 176,  
180) }
```

Background

The CSS property to change the background color of an element to CIELCh 75, 13.950, 11.763 is called "background". The background property can be set on classes, ids or directly on the HTML element.

```
.background, #background, body{  
background: rgb(212, 176, 180) }
```

If only the background color should be changed can be used:

```
.background{ background-color: rgb(212,  
176, 180) }
```

This example shows the color as background, it is applied via the CSS property "background".

To optimize and compress your CSS code, you can use our [online CSS compressor and optimizer](#) based on csstidy. If you want to create a linear or radial gradient as background or border, check our [CSS Gradient Generator](#).

Hey! You found this booklet interesting? Support Converting Colors with the new Membership Option!

The pro membership hides all ads, plus gives you double the colors in the color bucket, and more awesome pro features!

[Learn more, Memberships starting at \\$2.50/m!](#)

**Follow me
on Twitter!**

@ConvertingColor