

Converting Colors

CIELCh(75, 14.338, 358.397)

Have a look what the booklet for
CIELCh(75, 14.338, 358.397)
contains.

CIELCh(75, 14.281, 358.586)	3
<i>Conversions</i>	4
<i>Details</i>	6
<i>Harmonies</i>	12
<i>Previews</i>	21
<i>Color Blindness Simulation</i>	24
<i>CSS Examples</i>	27

Color

CIELCh(75, 14.281, 358.586)

Conversions

Conversions Part 1

Format	Color
Hex	D3B0BA
RGB	211, 176, 186
RGB Percent	83%, 69%, 73%
CMY	0.1737, 0.3109, 0.2717
CMYK	0.00, 0.17, 0.12, 0.17
HSL	343°, 28%, 76%
HSV	343°, 17%, 83%
XYZ	51.0820, 48.2781, 52.9217
YIQ	187.6050, 17.6500, 10.5300

Conversions

Conversions Part 2

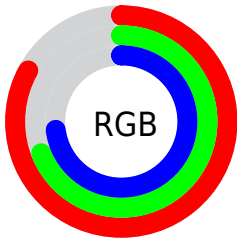
Format	Color
R_{YB}	211, 176, 186
Decimal	13873338
CIE Lab	75.00, 14.28, -0.35
CIE LCh	75, 14.281, 358.586
Yxy	48.2781, 0.3354, 0.3170
Android (android.graphics.Color)	4292063418 (0xFFD3B0BA)
YUV	187.6050, -0.7913, 20.5174
Hunter-Lab	69.4824, 9.6351, 3.4792

Details

The CIELCh color $75, 14.281, 358.586$ is a light color, and the websafe version is hex `CC9999`. A complement of this color would be $82, 13.580, 175.434$, and the grayscale version is $76, 0.009, 296.813$.

A 20% lighter version of the original color is $94, 9.699, 348.074$, and $55, 14.461, 357.854$ is the 20% darker color. If you saturate the color by 10%, you get $70, 23.299, 359.827$, and if you desaturate by 10%, it is $81, 5.562, 357.489$.

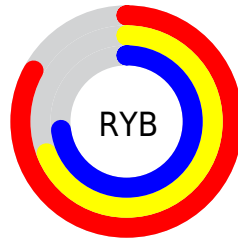
Distribution



Red (83%)

Green (69%)

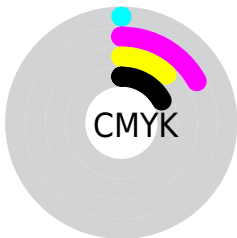
Blue (73%)



Red (83%)

Yellow (69%)

Blue (73%)

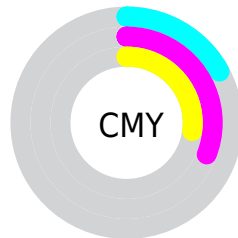


Cyan (0%)

Magenta (17%)

Yellow (12%)

Black (17%)



Cyan (17%)


Magenta (31%)

Yellow (27%)


Brightness & Saturation Gradients


These gradients show how the CIELCh color 75, 14.281, 358.586 changes by changing the brightness by 10 percent. The first figure shows a shift by +10% for each color and the second figure -10%.


Similar to the brightness gradients but the following saturation gradients show a change of the CIELCh color 75, 14.281, 358.586 by changing the saturation by 10% instead.


 75, 14.281,
358.586

 75, 14.281,
358.586


 100, 14.281,
358.586


 65, 14.281,
358.586


 95, 14.281,
358.586

 55, 14.281,
358.586

 45, 14.281,
358.586

 35, 14.281,
358.586

 25, 14.281,
358.586

 15, 14.281,
358.586

 5, 14.281, 358.586

0, 14.281, 358.586

75, 14.281,
358.586

75, 14.281,
358.586

70, 23.299,
359.827

81, 5.562, 357.489

86, 2.788, 176.847

64, 32.494, 1.286

92, 10.752,
175.908

59, 41.651, 3.053

55, 50.454, 5.242

97, 15.822,
181.314

51, 58.509, 7.997

97, 14.776,
198.521

48, 65.423, 11.490

46, 70.974, 15.868

45, 75.294, 21.127

Harmonies

Complementary

The Complementary color scheme is a pair of colors which are on the opposite of each other on the color wheel.



75, 14.281, 358.586



82, 13.580, 175.434

Rectangle

The Rectangle color scheme consists of four colors that form a rectangle on the color wheel.



75, 14.281, 358.586



75, 14.281, 48.586



75, 14.281, 178.586



75, 14.281, 228.586

Sweetspot

The Sweet Spot groups the original color and five complimentary colors.



75, 14.279, 358.591



97, 4.901, 357.312



75, 20.925, 316.427



51, 3.349, 357.394



0, 0.000, 0.000



53, 0.007, 296.813

Same Dimension

The Same Dimension uses a secret algorithm to generate beautiful new colors.



75, 14.279, 358.591



87, 20.221, 359.017



76, 11.465, 39.172



41, 4.778, 357.794



35, 64.534, 21.959



4, 20.444, 6.264

Inverse Universe

The Inverse Universe completely reimagines the original color for something new.



75, 14.279, 358.591



87, 20.221, 359.017



80, 10.296, 220.091



41, 4.778, 357.794



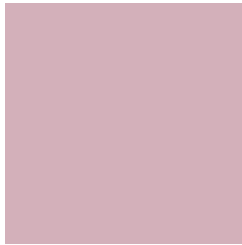
35, 64.534, 21.959



4, 20.444, 6.264

Previews

White Background



This preview shows how the CIELCh color 75, 14.281, 358.586 looks on a white background.

Color Contrast Check

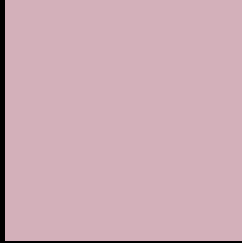
Large Text (above 18pt) WCAG AA × Fail

Any Text WCAG AA × Fail

Large Text (above 18pt) WCAG AAA × Fail

Any Text WCAG AAA × Fail

Black Background



This preview shows how the CIELCh color 75, 14.281, 358.586 looks on a black background.

Color Contrast Check

Large Text (above 18pt) WCAG AA ✓ Pass

Any Text WCAG AA ✓ Pass

Large Text (above 18pt) WCAG AAA ✓ Pass

Any Text WCAG AAA ✓ Pass

If you want to check with other color combinations, try the [Color Contrast Checker](#).

CIELCh 75, 14.281, 358.586

Background



This preview shows how black text looks on a background with the CIELCh color 75, 14.281, 358.586.

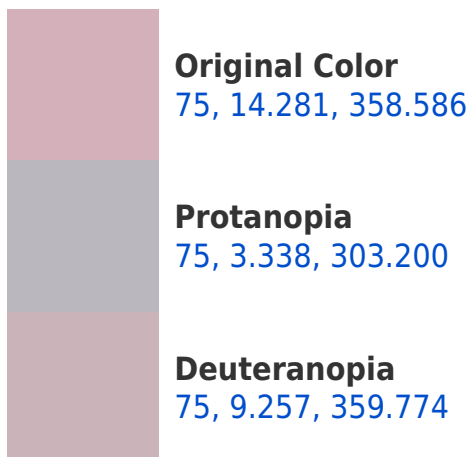


This preview shows how white text looks on a background with the CIELCh color 75, 14.281, 358.586.

Color Blindness Simulation

Color vision deficiency is a very complex topic, and I could not describe the different causes any better than Wikipedia does, so if you want to learn more, you should check out their [article about color blindness](#).

Dichromacy





Tritanopia
75, 15.483, 351.709

Trichromacy



Original Color
75, 14.281, 358.586

Protanomaly
75, 6.463, 344.180

Deuteranomaly
75, 10.872, 0.087

Tritanomaly
75, 15.251, 353.502

Monochromacy



Original Color
75, 14.281, 358.586

Achromatopsia
76, 0.009, 296.813

Achromatomaly
76, 5.327, 355.957

CSS Examples

Text

The CSS property to change the color of the text to CIELCh 75, 14.281, 358.586 is called "color". The color property can be set on classes, ids or directly on the HTML element.

This example shows how text in the color `rgb(211, 176, 186)` looks like.

```
.text, #text, p{  
    color:rgb(211, 176, 186)  
}
```

If you want to add a text shadow in that color use the text-shadow property, you can generate a text shadow directly with our [CSS Text Shadow Generator](#).

Here you see how black text with a 4 pixel rgb(211, 176, 186) colored shadow looks like.

```
.shadow{ text-shadow: 4px 4px 2px rgb(211, 176, 186) }
```

Border

The CSS property to change the border of an element to CIELCh 75, 14.281, 358.586 is called "border". The border property can be set on classes, ids or directly on the HTML element.

This example shows the color as border, it can be applied via the CSS property "border" or "border-color".

```
.border, #border, table{ border:4px solid rgb(211, 176, 186) }
```

If only the border color should be changed use the property `border-color`.

```
.border{ border-color:rgb(211, 176, 186) }
```

If you want to add a box shadow in that color use:

Here you see how a box with a 4 pixel `rgb(211, 176, 186)` colored shadow looks like.

```
.boxshadow{ -moz-box-shadow:4px 4px 4px  
4px rgb(211, 176, 186); -webkit-box-  
shadow:4px 4px 4px 4px rgb(211, 176, 186);  
box-shadow:4px 4px 4px 4px rgb(211, 176,  
186) }
```

Background

The CSS property to change the background color of an element to CIELCh 75, 14.281, 358.586 is called "background". The background property can be set on classes, ids or directly on the HTML element.

```
.background, #background, body{  
background: rgb(211, 176, 186) }
```

If only the background color should be changed can be used:

```
.background{ background-color: rgb(211,  
176, 186) }
```

This example shows the color as background, it is applied via the CSS property "background".

To optimize and compress your CSS code, you can use our [online CSS compressor and optimizer](#) based on csstidy. If you want to create a linear or radial gradient as background or border, check our [CSS Gradient Generator](#).

Hey! You found this booklet interesting? Support Converting Colors with the new Membership Option!

The pro membership hides all ads, plus gives you double the colors in the color bucket, and more awesome pro features!

[Learn more, Memberships starting at \\$2.50/m!](#)

**Follow me
on Twitter!**

@ConvertingColor