

Converting Colors

CIELCh(75, 15.173, 30.166)

Have a look what the booklet for
CIELCh(75, 15.173, 30.166) contains.

CIELCh(75, 15.117, 30.761)	3
<i>Conversions</i>	4
<i>Details</i>	6
<i>Harmonies</i>	11
<i>Previews</i>	20
<i>Color Blindness Simulation</i>	23
<i>CSS Examples</i>	26

Color

CIELCh(75, 15.117, 30.761)

Conversions

Conversions Part 1

Format	Color
Hex	D6B0AB
RGB	214, 176, 171
RGB Percent	84%, 69%, 67%
CMY	0.1608, 0.3098, 0.3295
CMYK	0.00, 0.18, 0.20, 0.16
HSL	7°, 34%, 75%
HSV	7°, 20%, 84%
XYZ	50.5986, 48.2781, 45.1720
YIQ	186.7920, 24.2530, 6.5010

Conversions

Conversions Part 2

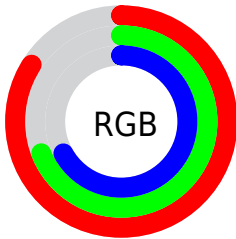
Format	Color
R_{YB}	214, 177, 171
Decimal	14069931
CIE Lab	75.00, 12.99, 7.73
CIE LCh	75, 15.117, 30.761
Yxy	48.2781, 0.3513, 0.3352
Android (android.graphics.Color)	4292260011 (0xFFD6B0AB)
YUV	186.7920, -7.7855, 23.8614
Hunter-Lab	69.4824, 8.3931, 10.0920

Details

The CIELCh color **75, 15.117, 30.761** is a light color, and the websafe version is hex **CC9999**. A complement of this color would be **81, 13.183, 210.221**, and the grayscale version is **76, 0.009, 296.813**.

A 20% lighter version of the original color is **94, 8.942, 39.965**, and **55, 15.346, 29.497** is the 20% darker color. If you saturate the color by 10%, you get **70, 23.599, 31.293**, and if you desaturate by 10%, it is **80, 7.284, 30.398**.

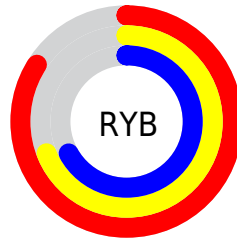
Distribution



Red (84%)

Green (69%)

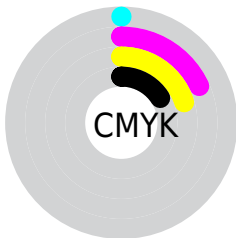
Blue (67%)



Red (84%)

Yellow (69%)

Blue (67%)

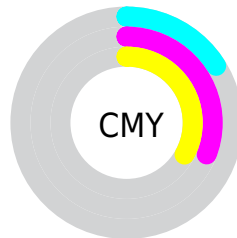


Cyan (0%)

Magenta (18%)

Yellow (20%)

Black (16%)



Cyan (16%)

Magenta (31%)

Yellow (33%)

Brightness & Saturation Gradients

These gradients show how the CIELCh color 75, 15.117, 30.761 changes by changing the brightness by 10 percent. The first figure shows a shift by +10% for each color and the second figure -10%.

Similar to the brightness gradients but the following saturation gradients show a change of the CIELCh color 75, 15.117, 30.761 by changing the saturation by 10% instead.

75, 15.117, 30.761

75, 15.117, 30.761

100, 15.117,
30.761

65, 15.117, 30.761

95, 15.117, 30.761

55, 15.117, 30.761

45, 15.117, 30.761

35, 15.117, 30.761

25, 15.117, 30.761

15, 15.117, 30.761

5, 15.117, 30.761

0, 15.117, 30.761

75, 15.117, 30.761

75, 15.117, 30.761

70, 23.599, 31.293

80, 7.284, 30.398

65, 32.743, 32.041

86, 0.066, 21.357

60, 42.510, 33.077

91, 6.594, 210.278

56, 52.786, 34.459

96, 12.675,
206.550

53, 63.343, 36.206

97, 13.736,
198.589

49, 73.734, 38.216

47, 83.002, 40.081

46, 89.733, 41.308

Harmonies

Complementary

The Complementary color scheme is a pair of colors which are on the opposite of each other on the color wheel.



75, 15.117, 30.761



81, 13.183, 210.221

Rectangle

The Rectangle color scheme consists of four colors that form a rectangle on the color wheel.



75, 15.117, 30.761



75, 15.117, 80.761



75, 15.117, 210.761



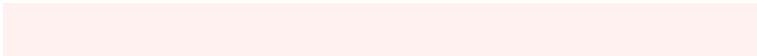
75, 15.117, 260.761

Sweetspot

The Sweet Spot groups the original color and five complimentary colors.



75, 15.116, 30.770



96, 4.909, 30.249



75, 26.038, 328.429



51, 3.265, 30.277



0, 0.000, 0.000



53, 0.007, 296.813

Same Dimension

The Same Dimension uses a secret algorithm to generate beautiful new colors.



75, 15.116, 30.770



85, 21.176, 30.964



80, 15.252, 82.815



42, 4.087, 30.375



36, 75.556, 41.527



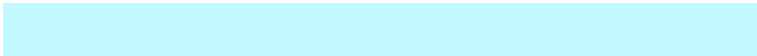
6, 20.424, 25.787

Inverse Universe

The Inverse Universe completely reimagines the original color for something new.



81, 13.183, 210.221



94, 17.897, 210.249



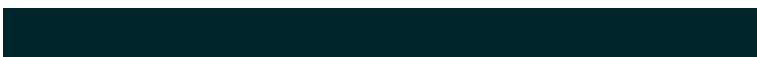
76, 14.924, 268.366



44, 3.846, 210.272



57, 32.714, 217.399



13, 13.021, 213.113

Previews

White Background



This preview shows how the CIELCh color 75, 15.117, 30.761 looks on a white background.

Color Contrast Check

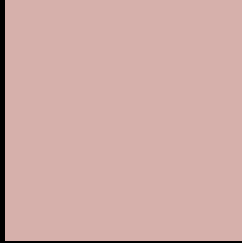
Large Text (above 18pt) WCAG AA × Fail

Any Text WCAG AA × Fail

Large Text (above 18pt) WCAG AAA × Fail

Any Text WCAG AAA × Fail

Black Background



This preview shows how the CIE LCh color 75, 15.117, 30.761 looks on a black background.

Color Contrast Check

Large Text (above 18pt) WCAG AA ✓ Pass

Any Text WCAG AA ✓ Pass

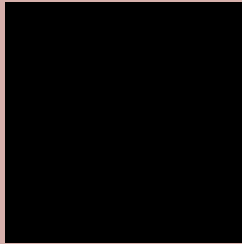
Large Text (above 18pt) WCAG AAA ✓ Pass

Any Text WCAG AAA ✓ Pass

If you want to check with other color combinations, try the [Color Contrast Checker](#).

CIELCh 75, 15.117, 30.761

Background



This preview shows how black text looks on a background with the CIELCh color 75, 15.117, 30.761.

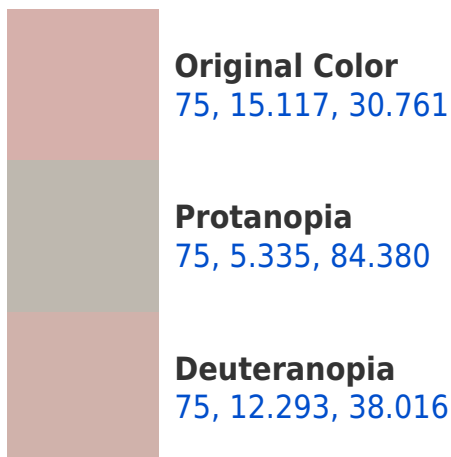


This preview shows how white text looks on a background with the CIELCh color 75, 15.117, 30.761.

Color Blindness Simulation

Color vision deficiency is a very complex topic, and I could not describe the different causes any better than Wikipedia does, so if you want to learn more, you should check out their [article about color blindness](#).

Dichromacy





Tritanopia
75, 17.338, 357.257

Trichromacy



Original Color
75, 15.117, 30.761

Protanomaly
75, 7.873, 48.330

Deuteranomaly
75, 13.285, 34.373

Tritanomaly
75, 15.638, 8.917

Monochromacy



Original Color
75, 15.117, 30.761

Achromatopsia
76, 0.009, 296.813

Achromatomaly
75, 5.396, 31.195

CSS Examples

Text

The CSS property to change the color of the text to CIELCh 75, 15.117, 30.761 is called "color". The color property can be set on classes, ids or directly on the HTML element.

This example shows how text in the color `rgb(214, 176, 171)` looks like.

```
.text, #text, p{  
    color:rgb(214, 176, 171)  
}
```

If you want to add a text shadow in that color use the text-shadow property, you can generate a text shadow directly with our [CSS Text Shadow Generator](#).

Here you see how black text with a 4 pixel rgb(214, 176, 171) colored shadow looks like.

```
.shadow{ text-shadow: 4px 4px 2px rgb(214, 176, 171) }
```

Border

The CSS property to change the border of an element to CIELCh 75, 15.117, 30.761 is called "border". The border property can be set on classes, ids or directly on the HTML element.

This example shows the color as border, it can be applied via the CSS property "border" or "border-color".

```
.border, #border, table{ border:4px solid rgb(214, 176, 171) }
```

If only the border color should be changed use the property `border-color`.

```
.border{ border-color:rgb(214, 176, 171) }
```

If you want to add a box shadow in that color use:

Here you see how a box with a 4 pixel `rgb(214, 176, 171)` colored shadow looks like.

```
.boxshadow{ -moz-box-shadow:4px 4px 4px  
4px rgb(214, 176, 171); -webkit-box-  
shadow:4px 4px 4px 4px rgb(214, 176, 171);  
box-shadow:4px 4px 4px 4px rgb(214, 176,  
171) }
```

Background

The CSS property to change the background color of an element to CIELCh 75, 15.117, 30.761 is called "background". The background property can be set on classes, ids or directly on the HTML element.

```
.background, #background, body{  
background: rgb(214, 176, 171) }
```

If only the background color should be changed can be used:

```
.background{ background-color: rgb(214,  
176, 171) }
```

This example shows the color as background, it is applied via the CSS property "background".

To optimize and compress your CSS code, you can use our [online CSS compressor and optimizer](#) based on csstidy. If you want to create a linear or radial gradient as background or border, check our [CSS Gradient Generator](#).

Hey! You found this booklet interesting? Support Converting Colors with the new Membership Option!

The pro membership hides all ads, plus gives you double the colors in the color bucket, and more awesome pro features!

[Learn more, Memberships starting at \\$2.50/m!](#)

**Follow me
on Twitter!**

@ConvertingColor