

Converting Colors

CIELCh(75, 15.456, 72.615)

Have a look what the booklet for
CIELCh(75, 15.456, 72.615) contains.

CIELCh(75, 15.438, 72.628)	3
<i>Conversions</i>	4
<i>Details</i>	6
<i>Harmonies</i>	11
<i>Previews</i>	20
<i>Color Blindness Simulation</i>	23
<i>CSS Examples</i>	26

Color

CIELCh(75, 15.438, 72.628)

Conversions

Conversions Part 1

Format	Color
Hex	CCB59E
RGB	204, 181, 158
RGB Percent	80%, 71%, 62%
CMY	0.2005, 0.2907, 0.3809
CMYK	0.00, 0.11, 0.23, 0.20
HSL	30°, 31%, 71%
HSV	30°, 23%, 80%
XYZ	47.5237, 48.2781, 39.1046
YIQ	185.2550, 21.0910, -2.2770

Conversions

Conversions Part 2

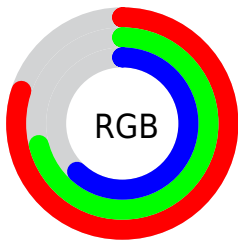
Format	Color
RYB	204, 204, 158
Decimal	13415838
CIELab	75.00, 4.61, 14.73
CIELCh	75, 15.438, 72.628
Yxy	48.2781, 0.3523, 0.3579
Android (android.graphics.Color)	4291605918 (0xFFCCB59E)
YUV	185.2550, -13.4367, 16.4394
Hunter-Lab	69.4824, 0.4938, 15.2694

Details

The CIELCh color $75, 15.438, 72.628$ is a light color, and the websafe version is hex `CCCCCC`. A complement of this color would be $73, 14.538, 258.740$, and the grayscale version is $75, 0.009, 296.813$.

A 20% lighter version of the original color is $95, 14.006, 80.587$, and $55, 15.117, 72.008$ is the 20% darker color. If you saturate the color by 10%, you get $72, 22.817, 71.390$, and if you desaturate by 10%, it is $78, 8.395, 73.859$.

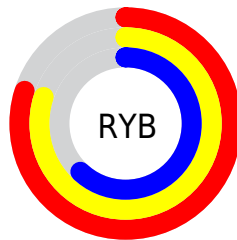
Distribution



Red (80%)

Green (71%)

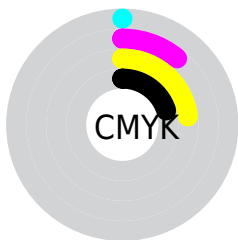
Blue (62%)



Red (80%)

Yellow (80%)

Blue (62%)

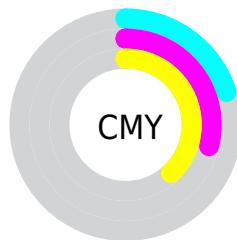


Cyan (0%)

Magenta (11%)

Yellow (23%)

Black (20%)



Cyan (20%)

Magenta (29%)

Yellow (38%)


Brightness & Saturation Gradients

These gradients show how the CIELCh color 75, 15.438, 72.628 changes by changing the brightness by 10 percent. The first figure shows a shift by +10% for each color and the second figure -10%.

Similar to the brightness gradients but the following saturation gradients show a change of the CIELCh color 75, 15.438, 72.628 by changing the saturation by 10% instead.

 75, 15.438, 72.628

 75, 15.438, 72.628

 100, 15.438,
72.628

 65, 15.438, 72.628

 95, 15.438, 72.628

 55, 15.438, 72.628

 45, 15.438, 72.628

 35, 15.438, 72.628

 25, 15.438, 72.628

 15, 15.438, 72.628

 5, 15.438, 72.628

 0, 15.438, 72.628

 75, 15.438, 72.628

 75, 15.438, 72.628

72, 22.817, 71.390

78, 8.395, 73.859

69, 30.532, 70.128

81, 1.667, 74.900

66, 38.549, 68.851

84, 4.772, 256.394

63, 46.758, 67.536

88, 10.952,
257.508

61, 54.907, 66.121

91, 14.926,
252.970

58, 62.486, 64.462

56, 68.617, 62.279

93, 14.090,
227.219

54, 72.110, 60.328

96, 16.011,
203.594

97, 16.913,
198.383

Harmonies

Complementary

The Complementary color scheme is a pair of colors which are on the opposite of each other on the color wheel.



75, 15.438, 72.628



73, 14.538, 258.740

Rectangle

The Rectangle color scheme consists of four colors that form a rectangle on the color wheel.



75, 15.438, 72.628



75, 15.438, 122.628



75, 15.438, 252.628



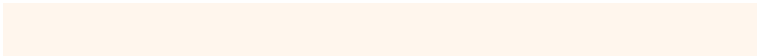
75, 15.438, 302.628

Sweetspot

The Sweet Spot groups the original color and five complimentary colors.



75, 15.438, 72.638



97, 5.538, 74.494



70, 21.396, 345.645



52, 3.604, 74.426



0, 0.000, 0.000



53, 0.007, 296.813

Same Dimension

The Same Dimension uses a secret algorithm to generate beautiful new colors.



75, 15.438, 72.638



90, 22.410, 72.042



81, 24.183, 108.003



41, 3.765, 74.232



45, 61.642, 60.932



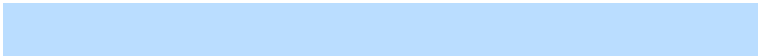
8, 14.350, 57.865

Inverse Universe

The Inverse Universe completely reimagines the original color for something new.



73, 14.538, 258.740



87, 20.801, 259.612



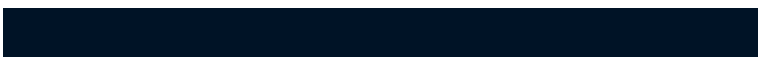
67, 25.487, 292.773



41, 3.684, 256.708



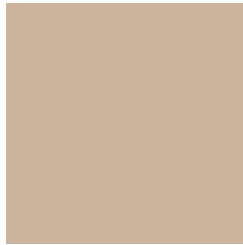
36, 51.905, 283.683



6, 15.149, 271.193

Previews

White Background



This preview shows how the CIELCh color 75, 15.438, 72.628 looks on a white background.

Color Contrast Check

Large Text (above 18pt) WCAG AA × Fail

Any Text WCAG AA × Fail

Large Text (above 18pt) WCAG AAA × Fail

Any Text WCAG AAA × Fail

Black Background



This preview shows how the CIELCh color 75, 15.438, 72.628 looks on a black background.

Color Contrast Check

Large Text (above 18pt) WCAG AA ✓ Pass

Any Text WCAG AA ✓ Pass

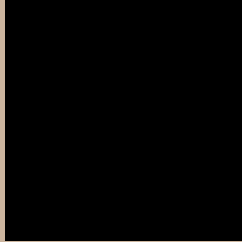
Large Text (above 18pt) WCAG AAA ✓ Pass

Any Text WCAG AAA ✓ Pass

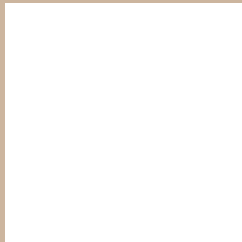
If you want to check with other color combinations, try the [Color Contrast Checker](#).

CIELCh 75, 15.438, 72.628

Background



This preview shows how black text looks on a background with the CIELCh color 75, 15.438, 72.628.



This preview shows how white text looks on a background with the CIELCh color 75, 15.438, 72.628.

Color Blindness Simulation

Color vision deficiency is a very complex topic, and I could not describe the different causes any better than Wikipedia does, so if you want to learn more, you should check out their [article about color blindness](#).

Dichromacy



Original Color

75, 15.438, 72.628

Protanopia

75, 13.476, 91.976

Deuteranopia

75, 17.458, 57.957



Tritanopia
75, 14.166, 348.534

Trichromacy



Original Color
75, 15.438, 72.628

Protanomaly
75, 14.206, 84.269

Deuteranomaly
75, 16.559, 62.746

Tritanomaly
75, 10.730, 20.263

Monochromacy



Original Color
75, 15.438, 72.628

Achromatopsia
75, 0.009, 296.813

Achromatomaly
75, 5.702, 77.386

CSS Examples

Text

The CSS property to change the color of the text to CIELCh 75, 15.438, 72.628 is called "color". The color property can be set on classes, ids or directly on the HTML element.

This example shows how text in the color `rgb(204, 181, 158)` looks like.

```
.text, #text, p{  
    color:rgb(204, 181, 158)  
}
```

If you want to add a text shadow in that color use the text-shadow property, you can generate a text shadow directly with our [CSS Text Shadow Generator](#).

Here you see how black text with a 4 pixel rgb(204, 181, 158) colored shadow looks like.

```
.shadow{ text-shadow: 4px 4px 2px rgb(204, 181, 158) }
```

Border

The CSS property to change the border of an element to CIELCh 75, 15.438, 72.628 is called "border". The border property can be set on classes, ids or directly on the HTML element.

This example shows the color as border, it can be applied via the CSS property "border" or "border-color".

```
.border, #border, table{ border:4px solid rgb(204, 181, 158) }
```

If only the border color should be changed use the property `border-color`.

```
.border{ border-color:rgb(204, 181, 158) }
```

If you want to add a box shadow in that color use:

Here you see how a box with a 4 pixel `rgb(204, 181, 158)` colored shadow looks like.

```
.boxshadow{ -moz-box-shadow:4px 4px 4px  
4px rgb(204, 181, 158); -webkit-box-  
shadow:4px 4px 4px 4px rgb(204, 181, 158);  
box-shadow:4px 4px 4px 4px rgb(204, 181,  
158) }
```

Background

The CSS property to change the background color of an element to CIELCh 75, 15.438, 72.628 is called "background". The background property can be set on classes, ids or directly on the HTML element.

```
.background, #background, body{  
background: rgb(204, 181, 158) }
```

If only the background color should be changed can be used:

```
.background{ background-color: rgb(204,  
181, 158) }
```

This example shows the color as background, it is applied via the CSS property "background".

To optimize and compress your CSS code, you can use our [online CSS compressor and optimizer](#) based on csstidy. If you want to create a linear or radial gradient as background or border, check our [CSS Gradient Generator](#).

Hey! You found this booklet interesting? Support Converting Colors with the new Membership Option!

The pro membership hides all ads, plus gives you double the colors in the color bucket, and more awesome pro features!

[Learn more, Memberships starting at \\$2.50/m!](#)

**Follow me
on Twitter!**

@ConvertingColor