

Converting Colors

CIELCh(75, 15.467, 79.588)

Have a look what the booklet for
CIELCh(75, 15.467, 79.588) contains.

CIELCh(75, 15.450, 79.601)	3
<i>Conversions</i>	4
<i>Details</i>	6
<i>Harmonies</i>	11
<i>Previews</i>	20
<i>Color Blindness Simulation</i>	23
<i>CSS Examples</i>	26

Color

CIELCh(75, 15.450, 79.601)

Conversions

Conversions Part 1

Format	Color
Hex	C9B69D
RGB	201, 182, 157
RGB Percent	79%, 71%, 62%
CMY	0.2120, 0.2865, 0.3845
CMYK	0.00, 0.09, 0.22, 0.21
HSL	34°, 29%, 70%
HSV	34°, 22%, 79%
XYZ	46.8726, 48.2781, 38.7242
YIQ	184.8310, 19.3490, -3.7470

Conversions

Conversions Part 2

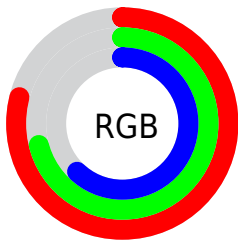
Format	Color
RYB	190, 201, 157
Decimal	13219485
CIELab	75.00, 2.79, 15.20
CIELCh	75, 15.450, 79.601
Yxy	48.2781, 0.3501, 0.3606
Android (android.graphics.Color)	4291409565 (0xFFC9B69D)
YUV	184.8310, -13.7207, 14.1802
Hunter-Lab	69.4824, -1.1788, 15.5940

Details

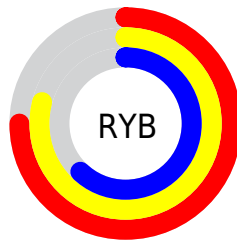
The CIELCh color $75, 15.450, 79.601$ is a light color, and the websafe version is hex `CCCC99`. A complement of this color would be $71, 14.932, 265.687$, and the grayscale version is $75, 0.009, 296.813$.

A 20% lighter version of the original color is $95, 14.744, 83.640$, and $55, 15.324, 78.200$ is the 20% darker color. If you saturate the color by 10%, you get $72, 22.910, 78.282$, and if you desaturate by 10%, it is $78, 8.244, 80.895$.

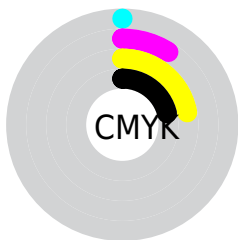
Distribution



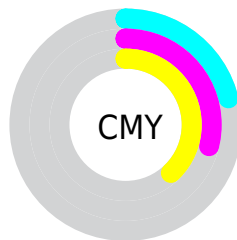
- Red (79%)
- Green (71%)
- Blue (62%)



- Red (75%)
- Yellow (79%)
- Blue (62%)



- Cyan (0%)
- Magenta (9%)
- Yellow (22%)
- Black (21%)



- Cyan (21%)
- Magenta (29%)
- Yellow (38%)

Brightness & Saturation Gradients

These gradients show how the CIELCh color 75, 15.450, 79.601 changes by changing the brightness by 10 percent. The first figure shows a shift by +10% for each color and the second figure -10%.

Similar to the brightness gradients but the following saturation gradients show a change of the CIELCh color 75, 15.450, 79.601 by changing the saturation by 10% instead.

■ 75, 15.450, 79.601

■ 75, 15.450, 79.601

■ 100, 15.450,
79.601

■ 65, 15.450, 79.601

■ 95, 15.450, 79.601

■ 55, 15.450, 79.601

■ 45, 15.450, 79.601

■ 35, 15.450, 79.601

■ 25, 15.450, 79.601

■ 15, 15.450, 79.601

■ 5, 15.450, 79.601

■ 0, 15.450, 79.601

■ 75, 15.450, 79.601

■ 75, 15.450, 79.601

72, 22.910, 78.282

78, 8.244, 80.895

70, 30.608, 76.921

80, 1.284, 81.953

67, 38.491, 75.523

83, 5.446, 263.481

65, 46.427, 74.068

86, 11.965,
264.629

63, 54.144, 72.502

89, 17.188,
263.703

60, 61.128, 70.704

58, 66.560, 68.452

91, 15.132,
245.139

57, 69.687, 66.274

93, 14.951,
223.917

96, 16.655,
204.893

96, 17.811,
198.326

Harmonies

Complementary

The Complementary color scheme is a pair of colors which are on the opposite of each other on the color wheel.



75, 15.450, 79.601



71, 14.932, 265.687

Rectangle

The Rectangle color scheme consists of four colors that form a rectangle on the color wheel.



75, 15.450, 79.601



75, 15.450, 129.601



75, 15.450, 259.601



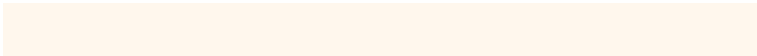
75, 15.450, 309.601

Sweetspot

The Sweet Spot groups the original color and five complimentary colors.



75, 15.451, 79.610



98, 5.834, 81.480



69, 19.701, 349.465



52, 3.795, 81.408



0, 0.000, 0.000



53, 0.007, 296.813

Same Dimension

The Same Dimension uses a secret algorithm to generate beautiful new colors.



75, 15.451, 79.610



91, 22.440, 79.021



80, 23.241, 110.916



41, 3.880, 81.207



46, 59.619, 66.856



8, 13.131, 66.164

Inverse Universe

The Inverse Universe completely reimagines the original color for something new.



71, 14.932, 265.687



86, 21.517, 266.496



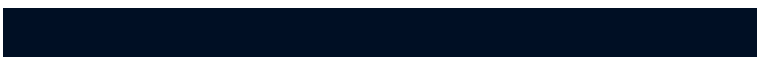
66, 24.446, 295.010



40, 3.834, 263.729



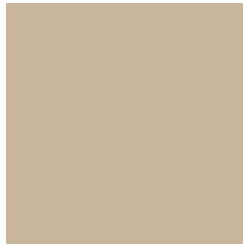
32, 58.475, 289.654



4, 15.126, 275.492

Previews

White Background



This preview shows how the CIELCh color 75, 15.450, 79.601 looks on a white background.

Color Contrast Check

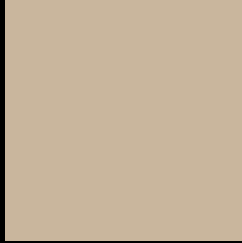
Large Text (above 18pt) WCAG AA × Fail

Any Text WCAG AA × Fail

Large Text (above 18pt) WCAG AAA × Fail

Any Text WCAG AAA × Fail

Black Background



This preview shows how the CIELCh color 75, 15.450, 79.601 looks on a black background.

Color Contrast Check

Large Text (above 18pt) WCAG AA ✓ Pass

Any Text WCAG AA ✓ Pass

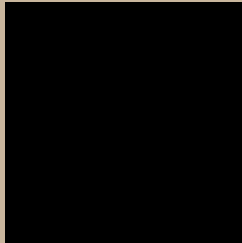
Large Text (above 18pt) WCAG AAA ✓ Pass

Any Text WCAG AAA ✓ Pass

If you want to check with other color combinations, try the [Color Contrast Checker](#).

CIELCh 75, 15.450, 79.601

Background



This preview shows how black text looks on a background with the CIELCh color 75, 15.450, 79.601.



This preview shows how white text looks on a background with the CIELCh color 75, 15.450, 79.601.

Color Blindness Simulation

Color vision deficiency is a very complex topic, and I could not describe the different causes any better than Wikipedia does, so if you want to learn more, you should check out their [article about color blindness](#).

Dichromacy



Original Color

75, 15.450, 79.601

Protanopia

75, 14.510, 93.053

Deuteranopia

75, 17.458, 57.957



Tritanopia
75, 12.904, 344.782

Trichromacy



Original Color
75, 15.450, 79.601

Protanomaly
75, 14.542, 86.491

Deuteranomaly
75, 16.261, 63.711

Tritanomaly
75, 9.547, 20.153

Monochromacy



Original Color
75, 15.450, 79.601

Achromatopsia
75, 0.009, 296.813

Achromatomaly
75, 5.508, 80.769

CSS Examples

Text

The CSS property to change the color of the text to CIELCh 75, 15.450, 79.601 is called "color". The color property can be set on classes, ids or directly on the HTML element.

This example shows how text in the color `rgb(201, 182, 157)` looks like.

```
.text, #text, p{  
    color:rgb(201, 182, 157)  
}
```

If you want to add a text shadow in that color use the text-shadow property, you can generate a text shadow directly with our [CSS Text Shadow Generator](#).

Here you see how black text with a 4 pixel rgb(201, 182, 157) colored shadow looks like.

```
.shadow{ text-shadow: 4px 4px 2px rgb(201, 182, 157) }
```

Border

The CSS property to change the border of an element to CIELCh 75, 15.450, 79.601 is called "border". The border property can be set on classes, ids or directly on the HTML element.

This example shows the color as border, it can be applied via the CSS property "border" or "border-color".

```
.border, #border, table{ border:4px solid rgb(201, 182, 157) }
```

If only the border color should be changed use the property `border-color`.

```
.border{ border-color:rgb(201, 182, 157) }
```

If you want to add a box shadow in that color use:

Here you see how a box with a 4 pixel `rgb(201, 182, 157)` colored shadow looks like.

```
.boxshadow{ -moz-box-shadow:4px 4px 4px  
4px rgb(201, 182, 157); -webkit-box-  
shadow:4px 4px 4px 4px rgb(201, 182, 157);  
box-shadow:4px 4px 4px 4px rgb(201, 182,  
157) }
```

Background

The CSS property to change the background color of an element to CIELCh 75, 15.450, 79.601 is called "background". The background property can be set on classes, ids or directly on the HTML element.

```
.background, #background, body{  
background: rgb(201, 182, 157) }
```

If only the background color should be changed can be used:

```
.background{ background-color: rgb(201,  
182, 157) }
```

This example shows the color as background, it is applied via the CSS property "background".

To optimize and compress your CSS code, you can use our [online CSS compressor and optimizer](#) based on csstidy. If you want to create a linear or radial gradient as background or border, check our [CSS Gradient Generator](#).

Hey! You found this booklet interesting? Support Converting Colors with the new Membership Option!

The pro membership hides all ads, plus gives you double the colors in the color bucket, and more awesome pro features!

[Learn more, Memberships starting at \\$2.50/m!](#)

**Follow me
on Twitter!**

@ConvertingColor