

Converting Colors

CIELCh(75, 15.621, 8.908)

Have a look what the booklet for
CIELCh(75, 15.621, 8.908) contains.

CIELCh(75, 15.638, 8.917)	3
<i>Conversions</i>	4
<i>Details</i>	6
<i>Harmonies</i>	11
<i>Previews</i>	20
<i>Color Blindness Simulation</i>	23
<i>CSS Examples</i>	26

Color

CIELCh(75, 15.638, 8.917)

Conversions

Conversions Part 1

Format	Color
Hex	D7AFB5
RGB	215, 175, 181
RGB Percent	84%, 69%, 71%
CMY	0.1580, 0.3148, 0.2913
CMYK	0.00, 0.19, 0.16, 0.16
HSL	351°, 33%, 76%
HSV	351°, 19%, 84%
XYZ	51.5252, 48.2781, 50.1677
YIQ	187.6440, 21.9140, 10.3460

Conversions

Conversions Part 2

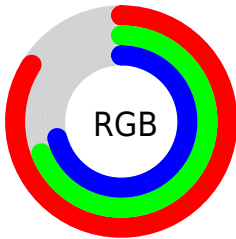
Format	Color
R _Y B	215, 175, 181
Decimal	14135221
CIE Lab	75.00, 15.45, 2.42
CIE LCh	75, 15.638, 8.917
Yxy	48.2781, 0.3436, 0.3219
Android (android.graphics.Color)	4292325301 (0xFFD7AFB5)
YUV	187.6440, -3.2755, 23.9912
Hunter-Lab	69.4824, 10.7737, 5.8291

Details

The CIELCh color **75, 15.638, 8.917** is a light color, and the websafe version is hex **CC9999**. A complement of this color would be **83, 14.341, 185.588**, and the grayscale version is **76, 0.009, 296.813**.

A 20% lighter version of the original color is **94, 9.163, 0.360**, and **55, 15.921, 8.876** is the 20% darker color. If you saturate the color by 10%, you get **69, 24.691, 10.203**, and if you desaturate by 10%, it is **81, 7.032, 7.833**.

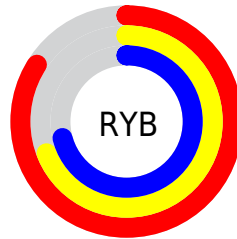
Distribution



Red (84%)

Green (69%)

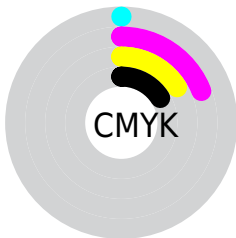
Blue (71%)



Red (84%)

Yellow (69%)

Blue (71%)

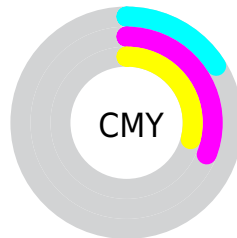


Cyan (0%)

Magenta (19%)

Yellow (16%)

Black (16%)



Cyan (16%)

Magenta (31%)

Yellow (29%)

Brightness & Saturation Gradients

These gradients show how the CIELCh color 75, 15.638, 8.917 changes by changing the brightness by 10 percent. The first figure shows a shift by +10% for each color and the second figure -10%.

Similar to the brightness gradients but the following saturation gradients show a change of the CIELCh color 75, 15.638, 8.917 by changing the saturation by 10% instead.

 75, 15.638, 8.917

 75, 15.638, 8.917

 100, 15.638, 8.917

 65, 15.638, 8.917

 95, 15.638, 8.917

 55, 15.638, 8.917

 45, 15.638, 8.917

 35, 15.638, 8.917

 25, 15.638, 8.917

 15, 15.638, 8.917

 5, 15.638, 8.917

 0, 15.638, 8.917

 75, 15.638, 8.917

 75, 15.638, 8.917

69, 24.691, 10.203

81, 7.032, 7.833

64, 34.099, 11.769

87, 1.086, 187.540

59, 43.679, 13.726

93, 8.721, 186.342

55, 53.154, 16.203

97, 13.569,
195.831

51, 62.183, 19.344

97, 13.506,
198.604

48, 70.440, 23.262

46, 77.726, 27.921

45, 84.009, 32.875

45, 84.843, 33.485

Harmonies

Complementary

The Complementary color scheme is a pair of colors which are on the opposite of each other on the color wheel.



75, 15.638, 8.917



83, 14.341, 185.588

Rectangle

The Rectangle color scheme consists of four colors that form a rectangle on the color wheel.



75, 15.638, 8.917



75, 15.638, 58.917



75, 15.638, 188.917



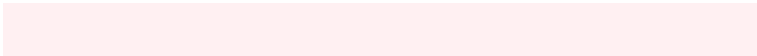
75, 15.638, 238.917

Sweetspot

The Sweet Spot groups the original color and five complimentary colors.



75, 15.636, 8.923



96, 5.584, 7.559



75, 24.811, 321.137



51, 3.711, 7.631



0, 0.000, 0.000



53, 0.007, 296.813

Same Dimension

The Same Dimension uses a secret algorithm to generate beautiful new colors.



75, 15.636, 8.923



85, 21.453, 9.356



78, 12.585, 56.168



42, 4.631, 7.917



35, 70.932, 32.636



5, 21.996, 13.085

Inverse Universe

The Inverse Universe completely reimagines the original color for something new.



75, 15.636, 8.923



85, 21.453, 9.356



79, 11.456, 239.772



42, 4.631, 7.917



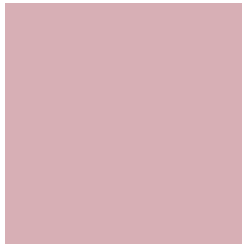
35, 70.932, 32.636



5, 21.996, 13.085

Previews

White Background



This preview shows how the CIELCh color 75, 15.638, 8.917 looks on a white background.

Color Contrast Check

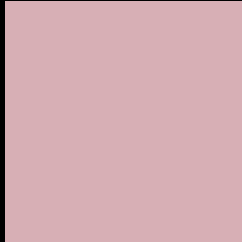
Large Text (above 18pt) WCAG AA × Fail

Any Text WCAG AA × Fail

Large Text (above 18pt) WCAG AAA × Fail

Any Text WCAG AAA × Fail

Black Background



This preview shows how the CIELCh color 75, 15.638, 8.917 looks on a black background.

Color Contrast Check

Large Text (above 18pt) WCAG AA ✓ Pass

Any Text WCAG AA ✓ Pass

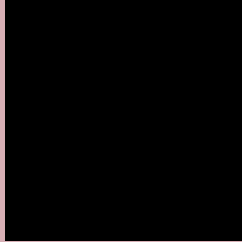
Large Text (above 18pt) WCAG AAA ✓ Pass

Any Text WCAG AAA ✓ Pass

If you want to check with other color combinations, try the [Color Contrast Checker](#).

CIELCh 75, 15.638, 8.917

Background



This preview shows how black text looks on a background with the CIELCh color 75, 15.638, 8.917.



This preview shows how white text looks on a background with the CIELCh color 75, 15.638, 8.917.

Color Blindness Simulation

Color vision deficiency is a very complex topic, and I could not describe the different causes any better than Wikipedia does, so if you want to learn more, you should check out their [article about color blindness](#).

Dichromacy



Original Color

75, 15.638, 8.917

Protanopia

75, 1.851, 343.613

Deuteranopia

75, 9.543, 16.940



Tritanopia
75, 17.338, 357.257

Trichromacy



Original Color
75, 15.638, 8.917

Protanomaly
75, 6.606, 5.767

Deuteranomaly
75, 11.952, 12.670

Tritanomaly
75, 16.994, 0.626

Monochromacy



Original Color
75, 15.638, 8.917

Achromatopsia
76, 0.009, 296.813

Achromatomaly
76, 5.369, 8.225

CSS Examples

Text

The CSS property to change the color of the text to CIELCh 75, 15.638, 8.917 is called "color". The color property can be set on classes, ids or directly on the HTML element.

This example shows how text in the color `rgb(215, 175, 181)` looks like.

```
.text, #text, p{  
    color:rgb(215, 175, 181)  
}
```

If you want to add a text shadow in that color use the text-shadow property, you can generate a text shadow directly with our [CSS Text Shadow Generator](#).

Here you see how black text with a 4 pixel rgb(215, 175, 181) colored shadow looks like.

```
.shadow{ text-shadow: 4px 4px 2px rgb(215, 175, 181) }
```

Border

The CSS property to change the border of an element to CIELCh 75, 15.638, 8.917 is called "border". The border property can be set on classes, ids or directly on the HTML element.

This example shows the color as border, it can be applied via the CSS property "border" or "border-color".

```
.border, #border, table{ border:4px solid rgb(215, 175, 181) }
```

If only the border color should be changed use the property `border-color`.

```
.border{ border-color:rgb(215, 175, 181) }
```

If you want to add a box shadow in that color use:

Here you see how a box with a 4 pixel `rgb(215, 175, 181)` colored shadow looks like.

```
.boxshadow{ -moz-box-shadow:4px 4px 4px  
4px rgb(215, 175, 181); -webkit-box-  
shadow:4px 4px 4px 4px rgb(215, 175, 181);  
box-shadow:4px 4px 4px 4px rgb(215, 175,  
181) }
```

Background

The CSS property to change the background color of an element to CIELCh 75, 15.638, 8.917 is called "background". The background property can be set on classes, ids or directly on the HTML element.

```
.background, #background, body{  
background: rgb(215, 175, 181) }
```

If only the background color should be changed can be used:

```
.background{ background-color: rgb(215,  
175, 181) }
```

This example shows the color as background, it is applied via the CSS property "background".

To optimize and compress your CSS code, you can use our [online CSS compressor and optimizer](#) based on csstidy. If you want to create a linear or radial gradient as background or border, check our [CSS Gradient Generator](#).

Hey! You found this booklet interesting? Support Converting Colors with the new Membership Option!

The pro membership hides all ads, plus gives you double the colors in the color bucket, and more awesome pro features!

[Learn more, Memberships starting at \\$2.50/m!](#)

**Follow me
on Twitter!**

@ConvertingColor