

Converting Colors

CIELCh(75, 16.222, 69.201)

Have a look what the booklet for
CIELCh(75, 16.222, 69.201) contains.

CIELCh(75, 16.222, 69.201)	3
<i>Conversions</i>	4
<i>Details</i>	6
<i>Harmonies</i>	11
<i>Previews</i>	20
<i>Color Blindness Simulation</i>	23
<i>CSS Examples</i>	26

Color

CIELCh(75, 16.222, 69.201)

Conversions

Conversions Part 1

Format	Color
Hex	CEB49D
RGB	206, 180, 157
RGB Percent	81%, 71%, 62%
CMY	0.1916, 0.2936, 0.3838
CMYK	0.00, 0.13, 0.24, 0.19
HSL	28°, 33%, 71%
HSV	28°, 24%, 81%
XYZ	47.9383, 48.2781, 38.7500
YIQ	185.1520, 22.8790, -1.6410

Conversions

Conversions Part 2

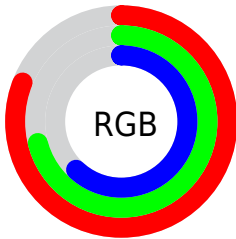
Format	Color
R _Y B	206, 200, 157
Decimal	13546653
CIE Lab	75.00, 5.76, 15.16
CIE LCh	75, 16.222, 69.201
Yxy	48.2781, 0.3552, 0.3577
Android (android.graphics.Color)	4291736733 (0xFFCEB49D)
YUV	185.1520, -13.8789, 18.2837
Hunter-Lab	69.4824, 1.5590, 15.5720

Details

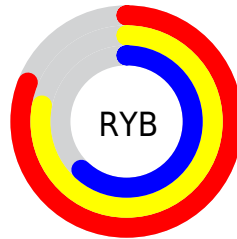
The CIELCh color **75, 16.222, 69.201** is a light color, and the websafe version is hex **CC9999**. A complement of this color would be **73, 15.032, 255.479**, and the grayscale version is **75, 0.009, 296.813**.

A 20% lighter version of the original color is **94, 14.205, 79.246**, and **55, 15.989, 68.278** is the 20% darker color. If you saturate the color by 10%, you get **72, 23.665, 68.028**, and if you desaturate by 10%, it is **78, 9.156, 70.380**.

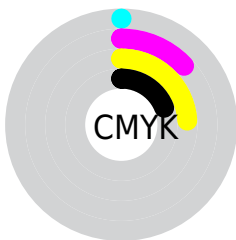
Distribution



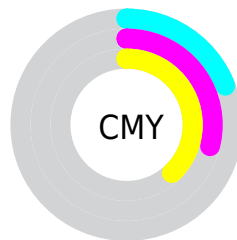
- Red (81%)
- Green (71%)
- Blue (62%)



- Red (81%)
- Yellow (78%)
- Blue (62%)



- Cyan (0%)
- Magenta (13%)
- Yellow (24%)
- Black (19%)



- Cyan (19%)
- Magenta (29%)
- Yellow (38%)


Brightness & Saturation Gradients

These gradients show how the CIELCh color 75, 16.222, 69.201 changes by changing the brightness by 10 percent. The first figure shows a shift by +10% for each color and the second figure -10%.

Similar to the brightness gradients but the following saturation gradients show a change of the CIELCh color 75, 16.222, 69.201 by changing the saturation by 10% instead.

 75, 16.222, 69.201

 75, 16.222, 69.201

 100, 16.222,
69.201

 65, 16.222, 69.201

 95, 16.222, 69.201

 55, 16.222, 69.201

 45, 16.222, 69.201

 35, 16.222, 69.201

 25, 16.222, 69.201

 15, 16.222, 69.201

 5, 16.222, 69.201

 0, 16.222, 69.201

 75, 16.222, 69.201

 75, 16.222, 69.201

72, 23.665, 68.028

78, 9.156, 70.380

69, 31.490, 66.844

82, 2.441, 71.437

66, 39.665, 65.659

85, 3.953, 252.861

63, 48.078, 64.447

88, 10.059,
253.932

60, 56.467, 63.137

92, 13.903,
247.939

57, 64.283, 61.564

55, 70.580, 59.408

94, 13.834,
218.856

54, 73.728, 57.844

97, 16.208,
198.429

Harmonies

Complementary

The Complementary color scheme is a pair of colors which are on the opposite of each other on the color wheel.



75, 16.222, 69.201



73, 15.032, 255.479

Rectangle

The Rectangle color scheme consists of four colors that form a rectangle on the color wheel.



75, 16.222, 69.201



75, 16.222, 119.201



75, 16.222, 249.201



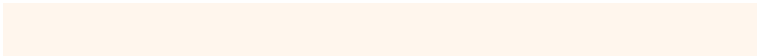
75, 16.222, 299.201

Sweetspot

The Sweet Spot groups the original color and five complimentary colors.



75, 16.222, 69.210



97, 5.434, 71.126



70, 23.255, 343.940



52, 3.536, 71.061



0, 0.000, 0.000



53, 0.007, 296.813

Same Dimension

The Same Dimension uses a secret algorithm to generate beautiful new colors.



75, 16.222, 69.210



89, 23.868, 68.550



81, 24.891, 106.457



41, 3.696, 70.877



44, 62.455, 58.479



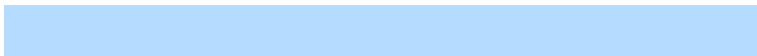
8, 14.384, 54.009

Inverse Universe

The Inverse Universe completely reimagines the original color for something new.



73, 15.032, 255.479



86, 21.672, 256.508



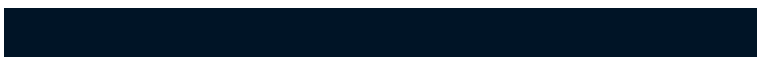
67, 26.219, 291.645



41, 3.600, 253.286



37, 48.804, 280.489



6, 14.577, 268.275

Previews

White Background



This preview shows how the CIELCh color 75, 16.222, 69.201 looks on a white background.

Color Contrast Check

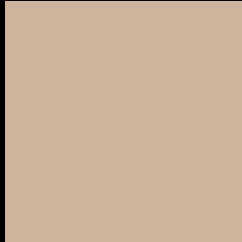
Large Text (above 18pt) WCAG AA × Fail

Any Text WCAG AA × Fail

Large Text (above 18pt) WCAG AAA × Fail

Any Text WCAG AAA × Fail

Black Background



This preview shows how the CIELCh color 75, 16.222, 69.201 looks on a black background.

Color Contrast Check

Large Text (above 18pt) WCAG AA ✓ Pass

Any Text WCAG AA ✓ Pass

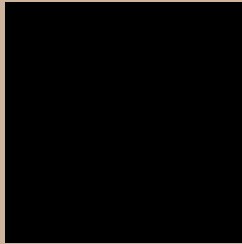
Large Text (above 18pt) WCAG AAA ✓ Pass

Any Text WCAG AAA ✓ Pass

If you want to check with other color combinations, try the [Color Contrast Checker](#).

CIELCh 75, 16.222, 69.201

Background



This preview shows how black text looks on a background with the CIELCh color 75, 16.222, 69.201.



This preview shows how white text looks on a background with the CIELCh color 75, 16.222, 69.201.

Color Blindness Simulation

Color vision deficiency is a very complex topic, and I could not describe the different causes any better than Wikipedia does, so if you want to learn more, you should check out their [article about color blindness](#).

Dichromacy



Original Color

75, 16.222, 69.201

Protanopia

75, 13.992, 92.536

Deuteranopia

75, 17.458, 57.957



Tritanopia
75, 14.564, 352.031

Trichromacy



Original Color
75, 16.222, 69.201

Protanomaly
75, 14.701, 85.053

Deuteranomaly
75, 16.862, 61.817

Tritanomaly
75, 11.945, 22.927

Monochromacy



Original Color
75, 16.222, 69.201

Achromatopsia
75, 0.009, 296.813

Achromatomaly
75, 5.735, 68.060

CSS Examples

Text

The CSS property to change the color of the text to CIELCh 75, 16.222, 69.201 is called "color". The color property can be set on classes, ids or directly on the HTML element.

This example shows how text in the color `rgb(206, 180, 157)` looks like.

```
.text, #text, p{  
    color:rgb(206, 180, 157)  
}
```

If you want to add a text shadow in that color use the text-shadow property, you can generate a text shadow directly with our [CSS Text Shadow Generator](#).

Here you see how black text with a 4 pixel rgb(206, 180, 157) colored shadow looks like.

```
.shadow{ text-shadow: 4px 4px 2px rgb(206, 180, 157) }
```

Border

The CSS property to change the border of an element to CIELCh 75, 16.222, 69.201 is called "border". The border property can be set on classes, ids or directly on the HTML element.

This example shows the color as border, it can be applied via the CSS property "border" or "border-color".

```
.border, #border, table{ border:4px solid rgb(206, 180, 157) }
```

If only the border color should be changed use the property `border-color`.

```
.border{ border-color:rgb(206, 180, 157) }
```

If you want to add a box shadow in that color use:

Here you see how a box with a 4 pixel `rgb(206, 180, 157)` colored shadow looks like.

```
.boxshadow{ -moz-box-shadow:4px 4px 4px  
4px rgb(206, 180, 157); -webkit-box-  
shadow:4px 4px 4px 4px rgb(206, 180, 157);  
box-shadow:4px 4px 4px 4px rgb(206, 180,  
157) }
```

Background

The CSS property to change the background color of an element to CIELCh 75, 16.222, 69.201 is called "background". The background property can be set on classes, ids or directly on the HTML element.

```
.background, #background, body{  
background: rgb(206, 180, 157) }
```

If only the background color should be changed can be used:

```
.background{ background-color: rgb(206,  
180, 157) }
```

This example shows the color as background, it is applied via the CSS property "background".

To optimize and compress your CSS code, you can use our [online CSS compressor and optimizer](#) based on csstidy. If you want to create a linear or radial gradient as background or border, check our [CSS Gradient Generator](#).

Hey! You found this booklet interesting? Support Converting Colors with the new Membership Option!

The pro membership hides all ads, plus gives you double the colors in the color bucket, and more awesome pro features!

[Learn more, Memberships starting at \\$2.50/m!](#)

**Follow me
on Twitter!**

@ConvertingColor