

Converting Colors

CIELCh(75, 17.162, 24.364)

Have a look what the booklet for
CIELCh(75, 17.162, 24.364) contains.

CIELCh(75, 17.240, 24.386)	3
<i>Conversions</i>	4
<i>Details</i>	6
<i>Harmonies</i>	11
<i>Previews</i>	20
<i>Color Blindness Simulation</i>	23
<i>CSS Examples</i>	26

Color

CIELCh(75, 17.240, 24.386)

Conversions

Conversions Part 1

Format	Color
Hex	DAAEAC
RGB	218, 174, 172
RGB Percent	85%, 68%, 67%
CMY	0.1442, 0.3168, 0.3247
CMYK	0.00, 0.20, 0.21, 0.14
HSL	3°, 38%, 77%
HSV	3°, 21%, 86%
XYZ	51.6212, 48.2781, 45.7318
YIQ	186.9280, 26.8660, 8.7060

Conversions

Conversions Part 2

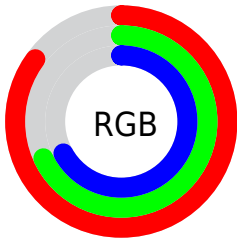
Format	Color
RYB	218, 174, 172
Decimal	14331564
CIELab	75.00, 15.70, 7.12
CIELCh	75, 17.240, 24.386
Yxy	48.2781, 0.3545, 0.3315
Android (android.graphics.Color)	4292521644 (0xFFDAAEAC)
YUV	186.9280, -7.3595, 27.2501
Hunter-Lab	69.4824, 11.0202, 9.6144

Details

The CIELCh color **75, 17.240, 24.386** is a light color, and the websafe version is hex **CC9999**. A complement of this color would be **83, 14.952, 202.479**, and the grayscale version is **76, 0.009, 296.813**.

A 20% lighter version of the original color is **93, 9.242, 29.528**, and **55, 17.234, 23.191** is the 20% darker color. If you saturate the color by 10%, you get **70, 26.442, 25.307**, and if you desaturate by 10%, it is **81, 8.703, 23.686**.

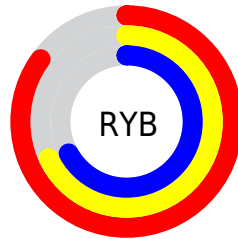
Distribution



Red (85%)

Green (68%)

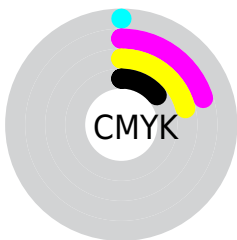
Blue (67%)



Red (85%)

Yellow (68%)

Blue (67%)

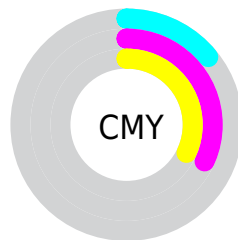


Cyan (0%)

Magenta (20%)

Yellow (21%)

Black (14%)



Cyan (14%)

Magenta (32%)

Yellow (32%)


Brightness & Saturation Gradients

These gradients show how the CIELCh color 75, 17.240, 24.386 changes by changing the brightness by 10 percent. The first figure shows a shift by +10% for each color and the second figure -10%.

Similar to the brightness gradients but the following saturation gradients show a change of the CIELCh color 75, 17.240, 24.386 by changing the saturation by 10% instead.

 75, 17.240, 24.386

 75, 17.240, 24.386

 100, 17.240,
24.386

 65, 17.240, 24.386

 95, 17.240, 24.386


 55, 17.240, 24.386

 45, 17.240, 24.386

 35, 17.240, 24.386

 25, 17.240, 24.386

 15, 17.240, 24.386

 5, 17.240, 24.386

 0, 17.240, 24.386

 75, 17.240, 24.386

 75, 17.240, 24.386

70, 26.442, 25.307

81, 8.703, 23.686

64, 36.285, 26.515

86, 0.818, 22.528

59, 46.666, 28.109

92, 6.460, 202.971

55, 57.389, 30.173

98, 12.379,
198.679

51, 68.139, 32.749

49, 78.399, 35.710

47, 87.109, 38.514

46, 92.410, 40.372

Harmonies

Complementary

The Complementary color scheme is a pair of colors which are on the opposite of each other on the color wheel.



75, 17.240, 24.386



83, 14.952, 202.479

Rectangle

The Rectangle color scheme consists of four colors that form a rectangle on the color wheel.



75, 17.240, 24.386



75, 17.240, 74.386



75, 17.240, 204.386



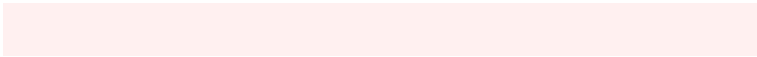
75, 17.240, 254.386

Sweetspot

The Sweet Spot groups the original color and five complimentary colors.



75, 17.238, 24.393



96, 5.238, 23.356



76, 29.057, 326.508



51, 3.483, 23.402



0, 0.000, 0.000



53, 0.007, 296.813

Same Dimension

The Same Dimension uses a secret algorithm to generate beautiful new colors.



75, 17.238, 24.393



84, 23.580, 24.741



81, 15.507, 76.248



43, 4.445, 23.581



36, 77.636, 40.448



6, 23.153, 22.423

Inverse Universe

The Inverse Universe completely reimagines the original color for something new.



83, 14.952, 202.479



95, 19.829, 202.358



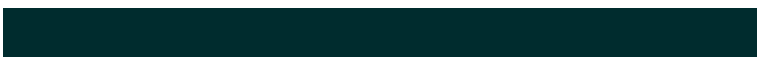
77, 14.833, 262.059



45, 4.184, 202.914



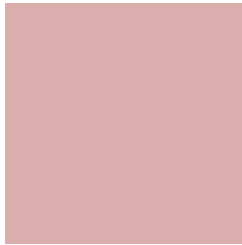
62, 35.398, 203.514



15, 14.351, 202.220

Previews

White Background



This preview shows how the CIELCh color 75, 17.240, 24.386 looks on a white background.

Color Contrast Check

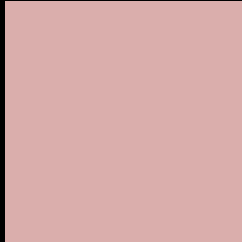
Large Text (above 18pt) WCAG AA × Fail

Any Text WCAG AA × Fail

Large Text (above 18pt) WCAG AAA × Fail

Any Text WCAG AAA × Fail

Black Background



This preview shows how the CIELCh color 75, 17.240, 24.386 looks on a black background.

Color Contrast Check

Large Text (above 18pt) WCAG AA ✓ Pass

Any Text WCAG AA ✓ Pass

Large Text (above 18pt) WCAG AAA ✓ Pass

Any Text WCAG AAA ✓ Pass

If you want to check with other color combinations, try the [Color Contrast Checker](#).

CIELCh 75, 17.240, 24.386

Background



This preview shows how black text looks on a background with the CIELCh color 75, 17.240, 24.386.



This preview shows how white text looks on a background with the CIELCh color 75, 17.240, 24.386.

Color Blindness Simulation

Color vision deficiency is a very complex topic, and I could not describe the different causes any better than Wikipedia does, so if you want to learn more, you should check out their [article about color blindness](#).

Dichromacy



Original Color

75, 17.240, 24.386

Protanopia

75, 3.927, 74.571

Deuteranopia

75, 12.293, 38.016



Tritanopia
75, 19.514, 0.277

Trichromacy



Original Color
75, 17.240, 24.386

Protanomaly
75, 7.955, 35.594

Deuteranomaly
75, 14.064, 33.642

Tritanomaly
75, 18.051, 9.038

Monochromacy



Original Color
75, 17.240, 24.386

Achromatopsia
76, 0.009, 296.813

Achromatomaly
75, 6.044, 19.819

CSS Examples

Text

The CSS property to change the color of the text to CIELCh 75, 17.240, 24.386 is called "color". The color property can be set on classes, ids or directly on the HTML element.

This example shows how text in the color `rgb(218, 174, 172)` looks like.

```
.text, #text, p{  
    color:rgb(218, 174, 172)  
}
```

If you want to add a text shadow in that color use the text-shadow property, you can generate a text shadow directly with our [CSS Text Shadow Generator](#).

Here you see how black text with a 4 pixel rgb(218, 174, 172) colored shadow looks like.

```
.shadow{ text-shadow: 4px 4px 2px rgb(218, 174, 172) }
```

Border

The CSS property to change the border of an element to CIELCh 75, 17.240, 24.386 is called "border". The border property can be set on classes, ids or directly on the HTML element.

This example shows the color as border, it can be applied via the CSS property "border" or "border-color".

```
.border, #border, table{ border:4px solid rgb(218, 174, 172) }
```

If only the border color should be changed use the property `border-color`.

```
.border{ border-color:rgb(218, 174, 172) }
```

If you want to add a box shadow in that color use:

Here you see how a box with a 4 pixel `rgb(218, 174, 172)` colored shadow looks like.

```
.boxshadow{ -moz-box-shadow:4px 4px 4px  
4px rgb(218, 174, 172); -webkit-box-  
shadow:4px 4px 4px 4px rgb(218, 174, 172);  
box-shadow:4px 4px 4px 4px rgb(218, 174,  
172) }
```

Background

The CSS property to change the background color of an element to CIELCh 75, 17.240, 24.386 is called "background". The background property can be set on classes, ids or directly on the HTML element.

```
.background, #background, body{  
background: rgb(218, 174, 172) }
```

If only the background color should be changed can be used:

```
.background{ background-color: rgb(218,  
174, 172) }
```

This example shows the color as background, it is applied via the CSS property "background".

To optimize and compress your CSS code, you can use our [online CSS compressor and optimizer](#) based on csstidy. If you want to create a linear or radial gradient as background or border, check our [CSS Gradient Generator](#).

Hey! You found this booklet interesting? Support Converting Colors with the new Membership Option!

The pro membership hides all ads, plus gives you double the colors in the color bucket, and more awesome pro features!

[Learn more, Memberships starting at \\$2.50/m!](#)

**Follow me
on Twitter!**

@ConvertingColor