

Converting Colors

CIELCh(75, 17.266, 73.376)

Have a look what the booklet for
CIELCh(75, 17.266, 73.376) contains.

CIELCh(75, 17.266, 73.376)	3
<i>Conversions</i>	4
<i>Details</i>	6
<i>Harmonies</i>	11
<i>Previews</i>	20
<i>Color Blindness Simulation</i>	23
<i>CSS Examples</i>	26

Color

CIELCh(75, 17.266, 73.376)

Conversions

Conversions Part 1

Format	Color
Hex	CEB59B
RGB	206, 181, 155
RGB Percent	81%, 71%, 61%
CMY	0.1939, 0.2919, 0.3938
CMYK	0.00, 0.12, 0.25, 0.19
HSL	31°, 34%, 71%
HSV	31°, 25%, 81%
XYZ	47.6424, 48.2781, 37.6295
YIQ	185.5110, 23.2460, -2.7860

Conversions

Conversions Part 2

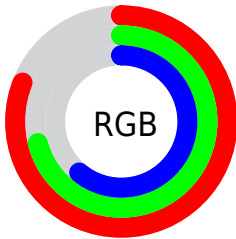
Format	Color
R _Y B	204, 206, 155
Decimal	13546907
CIE Lab	75.00, 4.94, 16.54
CIE LCh	75, 17.266, 73.376
Yxy	48.2781, 0.3567, 0.3615
Android (android.graphics.Color)	4291736987 (0xFFCEB59B)
YUV	185.5110, -15.0419, 17.9689
Hunter-Lab	69.4824, 0.7988, 16.5282

Details

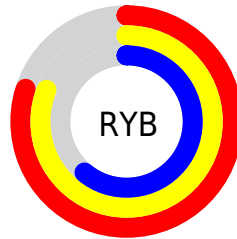
The CIELCh color $75, 17.266, 73.376$ is a light color, and the websafe version is hex `CCCC99`. A complement of this color would be $72, 16.217, 260.218$, and the grayscale version is $75, 0.009, 296.813$.

A 20% lighter version of the original color is $95, 15.388, 83.112$, and $55, 17.081, 72.745$ is the 20% darker color. If you saturate the color by 10%, you get $72, 24.789, 72.114$, and if you desaturate by 10%, it is $78, 10.072, 74.630$.

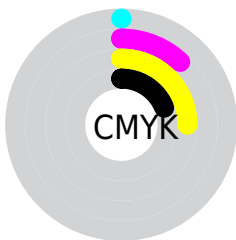
Distribution



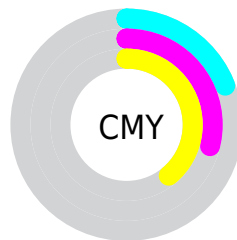
- Red (81%)
- Green (71%)
- Blue (61%)



- Red (80%)
- Yellow (81%)
- Blue (61%)



- Cyan (0%)
- Magenta (12%)
- Yellow (25%)
- Black (19%)



- Cyan (19%)
- Magenta (29%)
- Yellow (39%)

Brightness & Saturation Gradients

These gradients show how the CIELCh color 75, 17.266, 73.376 changes by changing the brightness by 10 percent. The first figure shows a shift by +10% for each color and the second figure -10%.

Similar to the brightness gradients but the following saturation gradients show a change of the CIELCh color 75, 17.266, 73.376 by changing the saturation by 10% instead.

■ 75, 17.266, 73.376

■ 75, 17.266, 73.376

■ 100, 17.266,
73.376

■ 65, 17.266, 73.376

■ 95, 17.266, 73.376

■ 55, 17.266, 73.376

■ 45, 17.266, 73.376

■ 35, 17.266, 73.376

■ 25, 17.266, 73.376

■ 15, 17.266, 73.376

■ 5, 17.266, 73.376

■ 0, 17.266, 73.376

■ 75, 17.266, 73.376

■ 75, 17.266, 73.376

72, 24.789, 72.114

78, 10.072, 74.630

69, 32.632, 70.827

81, 3.190, 75.790

66, 40.745, 69.518

84, 3.402, 257.222

64, 48.987, 68.157

87, 9.734, 258.326

61, 57.052, 66.669

91, 14.839,
256.751

59, 64.342, 64.884

93, 13.594,
231.024

56, 69.910, 62.498

55, 72.270, 61.123

96, 15.164,
206.177

97, 16.393,
198.417

Harmonies

Complementary

The Complementary color scheme is a pair of colors which are on the opposite of each other on the color wheel.



75, 17.266, 73.376



72, 16.217, 260.218

Rectangle

The Rectangle color scheme consists of four colors that form a rectangle on the color wheel.



75, 17.266, 73.376



75, 17.266, 123.376



75, 17.266, 253.376



75, 17.266, 303.376

Sweetspot

The Sweet Spot groups the original color and five complimentary colors.



75, 17.266, 73.385



97, 5.575, 75.546



69, 23.713, 345.877



52, 3.628, 75.477



0, 0.000, 0.000



53, 0.007, 296.813

Same Dimension

The Same Dimension uses a secret algorithm to generate beautiful new colors.



75, 17.266, 73.385



89, 25.201, 72.678



81, 26.729, 107.785



41, 3.790, 75.281



45, 61.408, 61.746



8, 14.353, 59.140

Inverse Universe

The Inverse Universe completely reimagines the original color for something new.



72, 16.217, 260.218



85, 23.295, 261.287



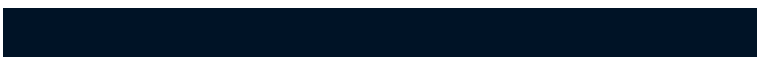
65, 28.337, 293.088



41, 3.714, 257.772



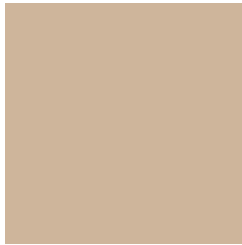
35, 52.928, 284.640



5, 15.334, 272.054

Previews

White Background



This preview shows how the CIELCh color 75, 17.266, 73.376 looks on a white background.

Color Contrast Check

Large Text (above 18pt) WCAG AA × Fail

Any Text WCAG AA × Fail

Large Text (above 18pt) WCAG AAA × Fail

Any Text WCAG AAA × Fail

Black Background



This preview shows how the CIELCh color 75, 17.266, 73.376 looks on a black background.

Color Contrast Check

Large Text (above 18pt) WCAG AA ✓ Pass

Any Text WCAG AA ✓ Pass

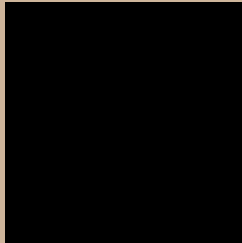
Large Text (above 18pt) WCAG AAA ✓ Pass

Any Text WCAG AAA ✓ Pass

If you want to check with other color combinations, try the [Color Contrast Checker](#).

CIELCh 75, 17.266, 73.376

Background



This preview shows how black text looks on a background with the CIELCh color 75, 17.266, 73.376.



This preview shows how white text looks on a background with the CIELCh color 75, 17.266, 73.376.

Color Blindness Simulation

Color vision deficiency is a very complex topic, and I could not describe the different causes any better than Wikipedia does, so if you want to learn more, you should check out their [article about color blindness](#).

Dichromacy



Original Color

75, 17.266, 73.376

Protanopia

75, 15.548, 93.973

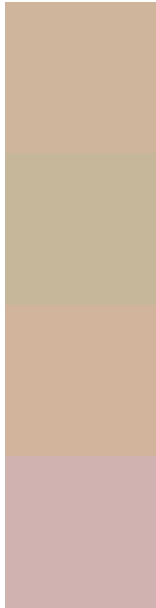
Deuteranopia

75, 18.888, 60.755



Tritanopia
75, 14.564, 352.031

Trichromacy



Original Color
75, 17.266, 73.376

Protanomaly
75, 16.200, 87.095

Deuteranomaly
75, 18.050, 65.304

Tritanomaly
75, 11.615, 25.605

Monochromacy



Original Color
75, 17.266, 73.376

Achromatopsia
75, 0.009, 296.813

Achromatomaly
75, 5.922, 74.228

CSS Examples

Text

The CSS property to change the color of the text to CIELCh 75, 17.266, 73.376 is called "color". The color property can be set on classes, ids or directly on the HTML element.

This example shows how text in the color `rgb(206, 181, 155)` looks like.

```
.text, #text, p{  
    color:rgb(206, 181, 155)  
}
```

If you want to add a text shadow in that color use the text-shadow property, you can generate a text shadow directly with our [CSS Text Shadow Generator](#).

Here you see how black text with a 4 pixel rgb(206, 181, 155) colored shadow looks like.

```
.shadow{ text-shadow: 4px 4px 2px rgb(206, 181, 155) }
```

Border

The CSS property to change the border of an element to CIELCh 75, 17.266, 73.376 is called "border". The border property can be set on classes, ids or directly on the HTML element.

This example shows the color as border, it can be applied via the CSS property "border" or "border-color".

```
.border, #border, table{ border:4px solid rgb(206, 181, 155) }
```

If only the border color should be changed use the property `border-color`.

```
.border{ border-color:rgb(206, 181, 155) }
```

If you want to add a box shadow in that color use:

Here you see how a box with a 4 pixel `rgb(206, 181, 155)` colored shadow looks like.

```
.boxshadow{ -moz-box-shadow:4px 4px 4px  
4px rgb(206, 181, 155); -webkit-box-  
shadow:4px 4px 4px 4px rgb(206, 181, 155);  
box-shadow:4px 4px 4px 4px rgb(206, 181,  
155) }
```

Background

The CSS property to change the background color of an element to CIELCh 75, 17.266, 73.376 is called "background". The background property can be set on classes, ids or directly on the HTML element.

```
.background, #background, body{  
background: rgb(206, 181, 155) }
```

If only the background color should be changed can be used:

```
.background{ background-color: rgb(206,  
181, 155) }
```

This example shows the color as background, it is applied via the CSS property "background".

To optimize and compress your CSS code, you can use our [online CSS compressor and optimizer](#) based on csstidy. If you want to create a linear or radial gradient as background or border, check our [CSS Gradient Generator](#).

Hey! You found this booklet interesting? Support Converting Colors with the new Membership Option!

The pro membership hides all ads, plus gives you double the colors in the color bucket, and more awesome pro features!

[Learn more, Memberships starting at \\$2.50/m!](#)

**Follow me
on Twitter!**

@ConvertingColor