

Converting Colors

CIELCh(75, 19.148, 73.899)

Have a look what the booklet for
CIELCh(75, 19.148, 73.899) contains.

CIELCh(75, 19.125, 73.914)	3
<i>Conversions</i>	4
<i>Details</i>	6
<i>Harmonies</i>	11
<i>Previews</i>	20
<i>Color Blindness Simulation</i>	23
<i>CSS Examples</i>	26

Color

CIELCh(75, 19.125, 73.914)

Conversions

Conversions Part 1

Format	Color
Hex	CFB497
RGB	207, 180, 151
RGB Percent	81%, 71%, 59%
CMY	0.1873, 0.2932, 0.4070
CMYK	0.00, 0.13, 0.27, 0.19
HSL	31°, 37%, 70%
HSV	31°, 27%, 81%
XYZ	47.7719, 48.2781, 36.1752
YIQ	184.7670, 25.4010, -3.2950

Conversions

Conversions Part 2

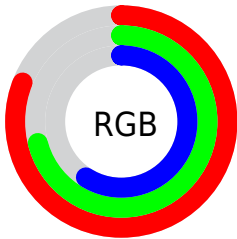
Format	Color
R _Y B	203, 207, 151
Decimal	13612183
CIE Lab	75.00, 5.30, 18.38
CIE LCh	75, 19.125, 73.914
Yxy	48.2781, 0.3613, 0.3651
Android (android.graphics.Color)	4291802263 (0xFFCFB497)
YUV	184.7670, -16.6471, 19.4983
Hunter-Lab	69.4824, 1.1315, 17.7691

Details

The CIELCh color $75, 19.125, 73.914$ is a light color, and the websafe version is hex `CCCC99`. A complement of this color would be $72, 17.914, 261.496$, and the grayscale version is $75, 0.009, 296.813$.

A 20% lighter version of the original color is $94, 17.440, 84.652$, and $55, 19.086, 73.232$ is the 20% darker color. If you saturate the color by 10%, you get $72, 26.786, 72.633$, and if you desaturate by 10%, it is $78, 11.785, 75.187$.

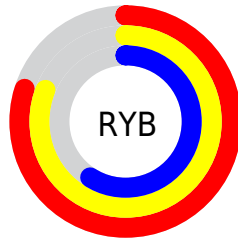
Distribution



Red (81%)

Green (71%)

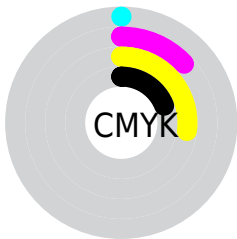
Blue (59%)



Red (80%)

Yellow (81%)

Blue (59%)

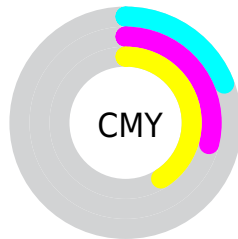


Cyan (0%)

Magenta (13%)

Yellow (27%)

Black (19%)



Cyan (19%)

Magenta (29%)

Yellow (41%)


Brightness & Saturation Gradients

These gradients show how the CIELCh color 75, 19.125, 73.914 changes by changing the brightness by 10 percent. The first figure shows a shift by +10% for each color and the second figure -10%.

Similar to the brightness gradients but the following saturation gradients show a change of the CIELCh color 75, 19.125, 73.914 by changing the saturation by 10% instead.

 75, 19.125, 73.914

 75, 19.125, 73.914

 100, 19.125,
73.914

 65, 19.125, 73.914

 95, 19.125, 73.914

 55, 19.125, 73.914

 45, 19.125, 73.914

 35, 19.125, 73.914

 25, 19.125, 73.914

 15, 19.125, 73.914

 5, 19.125, 73.914

 0, 19.125, 73.914

 75, 19.125, 73.914

 75, 19.125, 73.914

72, 26.786, 72.633

78, 11.785, 75.187

69, 34.751, 71.325

81, 4.757, 76.395

66, 42.949, 69.987

84, 1.981, 257.879

64, 51.207, 68.582

87, 8.457, 258.926

61, 59.157, 67.019

90, 14.696,
260.056

59, 66.111, 65.104

93, 13.149,
234.566

57, 71.144, 62.541

56, 72.497, 61.773

96, 14.400,
208.518

97, 15.865,
198.451

Harmonies

Complementary

The Complementary color scheme is a pair of colors which are on the opposite of each other on the color wheel.



75, 19.125, 73.914



72, 17.914, 261.496

Rectangle

The Rectangle color scheme consists of four colors that form a rectangle on the color wheel.



75, 19.125, 73.914



75, 19.125, 123.914



75, 19.125, 253.914



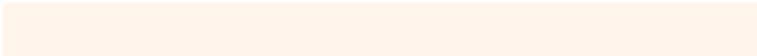
75, 19.125, 303.914

Sweetspot

The Sweet Spot groups the original color and five complimentary colors.



75, 19.125, 73.922



97, 6.423, 76.272



69, 25.791, 347.067



51, 4.580, 76.094



0, 0.000, 0.000



53, 0.007, 296.813

Same Dimension

The Same Dimension uses a secret algorithm to generate beautiful new colors.



75, 19.125, 73.922



89, 27.113, 73.234



82, 29.294, 108.297



42, 3.889, 76.118



46, 61.934, 62.367



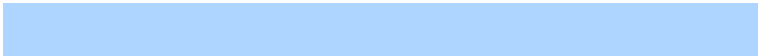
9, 15.717, 60.852

Inverse Universe

The Inverse Universe completely reimagines the original color for something new.



72, 17.914, 261.496



84, 25.028, 262.564



64, 31.245, 293.972



42, 3.816, 258.626



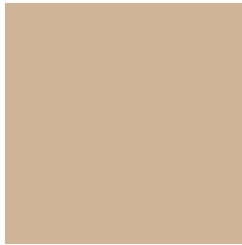
35, 54.442, 285.449



6, 16.595, 273.645

Previews

White Background



This preview shows how the CIELCh color 75, 19.125, 73.914 looks on a white background.

Color Contrast Check

Large Text (above 18pt) WCAG AA × Fail

Any Text WCAG AA × Fail

Large Text (above 18pt) WCAG AAA × Fail

Any Text WCAG AAA × Fail

Black Background



This preview shows how the CIELCh color 75, 19.125, 73.914 looks on a black background.

Color Contrast Check

Large Text (above 18pt) WCAG AA ✓ Pass

Any Text WCAG AA ✓ Pass

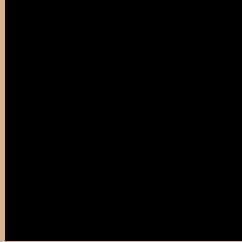
Large Text (above 18pt) WCAG AAA ✓ Pass

Any Text WCAG AAA ✓ Pass

If you want to check with other color combinations, try the [Color Contrast Checker](#).

CIELCh 75, 19.125, 73.914

Background



This preview shows how black text looks on a background with the CIELCh color 75, 19.125, 73.914.



This preview shows how white text looks on a background with the CIELCh color 75, 19.125, 73.914.

Color Blindness Simulation

Color vision deficiency is a very complex topic, and I could not describe the different causes any better than Wikipedia does, so if you want to learn more, you should check out their [article about color blindness](#).

Dichromacy



Original Color

75, 19.125, 73.914

Protanopia

75, 17.210, 93.819

Deuteranopia

75, 20.363, 63.123



Tritanopia
75, 15.816, 352.424

Trichromacy



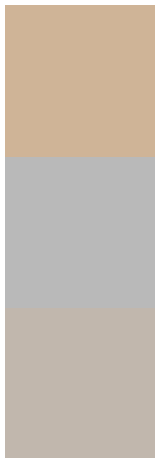
Original Color
75, 19.125, 73.914

Protanomaly
75, 17.861, 87.543

Deuteranomaly
75, 19.860, 66.564

Tritanomaly
75, 12.810, 25.219

Monochromacy



Original Color
75, 19.125, 73.914

Achromatopsia
75, 0.009, 296.813

Achromatomaly
75, 6.589, 74.113

CSS Examples

Text

The CSS property to change the color of the text to CIELCh 75, 19.125, 73.914 is called "color". The color property can be set on classes, ids or directly on the HTML element.

This example shows how text in the color `rgb(207, 180, 151)` looks like.

```
.text, #text, p{  
    color:rgb(207, 180, 151)  
}
```

If you want to add a text shadow in that color use the text-shadow property, you can generate a text shadow directly with our [CSS Text Shadow Generator](#).

Here you see how black text with a 4 pixel rgb(207, 180, 151) colored shadow looks like.

```
.shadow{ text-shadow: 4px 4px 2px rgb(207, 180, 151) }
```

Border

The CSS property to change the border of an element to CIELCh 75, 19.125, 73.914 is called "border". The border property can be set on classes, ids or directly on the HTML element.

This example shows the color as border, it can be applied via the CSS property "border" or "border-color".

```
.border, #border, table{ border:4px solid rgb(207, 180, 151) }
```

If only the border color should be changed use the property `border-color`.

```
.border{ border-color:rgb(207, 180, 151) }
```

If you want to add a box shadow in that color use:

Here you see how a box with a 4 pixel `rgb(207, 180, 151)` colored shadow looks like.

```
.boxshadow{ -moz-box-shadow:4px 4px 4px  
4px rgb(207, 180, 151); -webkit-box-  
shadow:4px 4px 4px 4px rgb(207, 180, 151);  
box-shadow:4px 4px 4px 4px rgb(207, 180,  
151) }
```

Background

The CSS property to change the background color of an element to CIELCh 75, 19.125, 73.914 is called "background". The background property can be set on classes, ids or directly on the HTML element.

```
.background, #background, body{  
background: rgb(207, 180, 151) }
```

If only the background color should be changed can be used:

```
.background{ background-color: rgb(207,  
180, 151) }
```

This example shows the color as background, it is applied via the CSS property "background".

To optimize and compress your CSS code, you can use our [online CSS compressor and optimizer](#) based on csstidy. If you want to create a linear or radial gradient as background or border, check our [CSS Gradient Generator](#).

Hey! You found this booklet interesting? Support Converting Colors with the new Membership Option!

The pro membership hides all ads, plus gives you double the colors in the color bucket, and more awesome pro features!

[Learn more, Memberships starting at \\$2.50/m!](#)

**Follow me
on Twitter!**

@ConvertingColor