

Converting Colors

CIELCh(75, 19.375, 35.237)

Have a look what the booklet for
CIELCh(75, 19.375, 35.237) contains.

CIELCh(75, 19.351, 35.227)	3
<i>Conversions</i>	4
<i>Details</i>	6
<i>Harmonies</i>	11
<i>Previews</i>	20
<i>Color Blindness Simulation</i>	23
<i>CSS Examples</i>	26

Color

CIELCh(75, 19.351, 35.227)

Conversions

Conversions Part 1

Format	Color
Hex	DDAEA5
RGB	221, 174, 165
RGB Percent	87%, 68%, 65%
CMY	0.1339, 0.3182, 0.3535
CMYK	0.00, 0.21, 0.25, 0.13
HSL	10°, 45%, 76%
HSV	10°, 25%, 87%
XYZ	51.6612, 48.2781, 42.1267
YIQ	187.0270, 30.9010, 7.1650

Conversions

Conversions Part 2

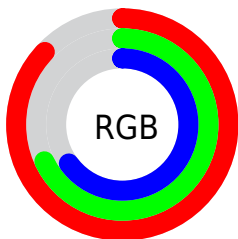
Format	Color
R _{YB}	221, 176, 165
Decimal	14528165
CIE Lab	75.00, 15.81, 11.16
CIE LCh	75, 19.351, 35.227
Yxy	48.2781, 0.3636, 0.3398
Android (android.graphics.Color)	4292718245 (0xFFDDAEA5)
YUV	187.0270, -10.8593, 29.7943
Hunter-Lab	69.4824, 11.1230, 12.6906

Details

The CIELCh color $75, 19.351, 35.227$ is a light color, and the websafe version is hex `CC9999`. A complement of this color would be $82, 16.230, 215.587$, and the grayscale version is $76, 0.009, 296.813$.

A 20% lighter version of the original color is $93, 10.560, 48.936$, and $55, 19.516, 34.764$ is the 20% darker color. If you saturate the color by 10%, you get $70, 28.137, 35.610$, and if you desaturate by 10%, it is $80, 11.235, 35.023$.

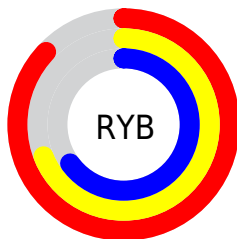
Distribution



Red (87%)

Green (68%)

Blue (65%)



Red (87%)

Yellow (69%)

Blue (65%)

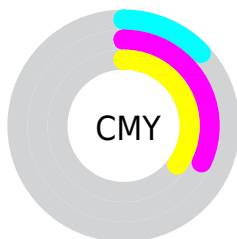


Cyan (0%)

Magenta (21%)

Yellow (25%)

Black (13%)



Cyan (13%)

Magenta (32%)

Yellow (35%)


Brightness & Saturation Gradients

These gradients show how the CIELCh color 75, 19.351, 35.227 changes by changing the brightness by 10 percent. The first figure shows a shift by +10% for each color and the second figure -10%.

Similar to the brightness gradients but the following saturation gradients show a change of the CIELCh color 75, 19.351, 35.227 by changing the saturation by 10% instead.

 75, 19.351, 35.227

 75, 19.351, 35.227

 100, 19.351,
35.227

 65, 19.351, 35.227

 95, 19.351, 35.227

 55, 19.351, 35.227

 45, 19.351, 35.227

 35, 19.351, 35.227

 25, 19.351, 35.227

 15, 19.351, 35.227

 5, 19.351, 35.227

 0, 19.351, 35.227

 75, 19.351, 35.227

 75, 19.351, 35.227

70, 28.137, 35.610

80, 11.235, 35.023

65, 37.602, 36.204

85, 3.757, 34.864

61, 47.694, 37.065

91, 3.137, 215.259

57, 58.273, 38.219

96, 9.507, 215.256

54, 69.030, 39.625

98, 11.527,
198.736

51, 79.295, 41.055

48, 87.610, 41.887

48, 90.699, 42.180

Harmonies

Complementary

The Complementary color scheme is a pair of colors which are on the opposite of each other on the color wheel.



75, 19.351, 35.227



82, 16.230, 215.587

Rectangle

The Rectangle color scheme consists of four colors that form a rectangle on the color wheel.



75, 19.351, 35.227



75, 19.351, 85.227



75, 19.351, 215.227



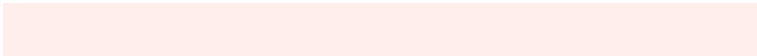
75, 19.351, 265.227

Sweetspot

The Sweet Spot groups the original color and five complimentary colors.



75, 19.350, 35.235



95, 6.382, 34.922



74, 32.568, 330.380



50, 4.564, 34.944



0, 0.000, 0.000



53, 0.007, 296.813

Same Dimension

The Same Dimension uses a secret algorithm to generate beautiful new colors.



75, 19.350, 35.235



83, 26.265, 35.394



82, 20.736, 86.496



43, 4.030, 34.942



37, 75.354, 42.511



7, 21.448, 28.920

Inverse Universe

The Inverse Universe completely reimagines the original color for something new.



82, 16.230, 215.587



92, 21.192, 215.797



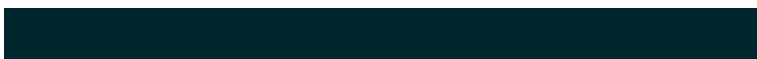
75, 20.508, 273.586



45, 3.794, 215.219



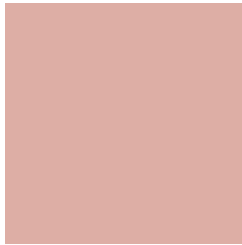
56, 32.608, 226.839



13, 13.175, 220.917

Previews

White Background



This preview shows how the CIELCh color 75, 19.351, 35.227 looks on a white background.

Color Contrast Check

Large Text (above 18pt) WCAG AA × Fail

Any Text WCAG AA × Fail

Large Text (above 18pt) WCAG AAA × Fail

Any Text WCAG AAA × Fail

Black Background



This preview shows how the CIE LCh color 75, 19.351, 35.227 looks on a black background.

Color Contrast Check

Large Text (above 18pt) WCAG AA ✓ Pass

Any Text WCAG AA ✓ Pass

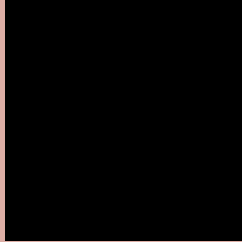
Large Text (above 18pt) WCAG AAA ✓ Pass

Any Text WCAG AAA ✓ Pass

If you want to check with other color combinations, try the [Color Contrast Checker](#).

CIELCh 75, 19.351, 35.227

Background



This preview shows how black text looks on a background with the CIELCh color 75, 19.351, 35.227.



This preview shows how white text looks on a background with the CIELCh color 75, 19.351, 35.227.

Color Blindness Simulation

Color vision deficiency is a very complex topic, and I could not describe the different causes any better than Wikipedia does, so if you want to learn more, you should check out their [article about color blindness](#).

Dichromacy



Original Color


75, 19.351, 35.227

Protanopia

75, 8.120, 87.162

Deuteranopia

75, 14.786, 50.672



Tritanopia
75, 20.990, 1.978

Trichromacy



Original Color
75, 19.351, 35.227

Protanomaly
75, 10.755, 56.659

Deuteranomaly
75, 16.459, 43.429

Tritanomaly
75, 19.525, 13.275

Monochromacy



Original Color
75, 19.351, 35.227

Achromatopsia
76, 0.009, 296.813

Achromatomaly
75, 6.659, 33.815

CSS Examples

Text

The CSS property to change the color of the text to CIELCh 75, 19.351, 35.227 is called "color". The color property can be set on classes, ids or directly on the HTML element.

This example shows how text in the color `rgb(221, 174, 165)` looks like.

```
.text, #text, p{  
    color:rgb(221, 174, 165)  
}
```

If you want to add a text shadow in that color use the text-shadow property, you can generate a text shadow directly with our [CSS Text Shadow Generator](#).

Here you see how black text with a 4 pixel rgb(221, 174, 165) colored shadow looks like.

```
.shadow{ text-shadow: 4px 4px 2px rgb(221, 174, 165) }
```

Border

The CSS property to change the border of an element to CIELCh 75, 19.351, 35.227 is called "border". The border property can be set on classes, ids or directly on the HTML element.

This example shows the color as border, it can be applied via the CSS property "border" or "border-color".

```
.border, #border, table{ border:4px solid rgb(221, 174, 165) }
```

If only the border color should be changed use the property `border-color`.

```
.border{ border-color:rgb(221, 174, 165) }
```

If you want to add a box shadow in that color use:

Here you see how a box with a 4 pixel `rgb(221, 174, 165)` colored shadow looks like.

```
.boxshadow{ -moz-box-shadow:4px 4px 4px  
4px rgb(221, 174, 165); -webkit-box-  
shadow:4px 4px 4px 4px rgb(221, 174, 165);  
box-shadow:4px 4px 4px 4px rgb(221, 174,  
165) }
```

Background

The CSS property to change the background color of an element to CIELCh 75, 19.351, 35.227 is called "background". The background property can be set on classes, ids or directly on the HTML element.

```
.background, #background, body{  
background: rgb(221, 174, 165) }
```

If only the background color should be changed can be used:

```
.background{ background-color: rgb(221,  
174, 165) }
```

This example shows the color as background, it is applied via the CSS property "background".

To optimize and compress your CSS code, you can use our [online CSS compressor and optimizer](#) based on csstidy. If you want to create a linear or radial gradient as background or border, check our [CSS Gradient Generator](#).

Hey! You found this booklet interesting? Support Converting Colors with the new Membership Option!

The pro membership hides all ads, plus gives you double the colors in the color bucket, and more awesome pro features!

[Learn more, Memberships starting at \\$2.50/m!](#)

**Follow me
on Twitter!**

@ConvertingColor