

Converting Colors

CIELCh(75, 19.664, 1.016)

Have a look what the booklet for
CIELCh(75, 19.664, 1.016) contains.

CIELCh(75, 19.876, 0.720)	3
<i>Conversions</i>	4
<i>Details</i>	6
<i>Harmonies</i>	11
<i>Previews</i>	20
<i>Color Blindness Simulation</i>	23
<i>CSS Examples</i>	26

Color

CIELCh(75, 19.876, 0.720)

Conversions

Conversions Part 1

Format	Color
Hex	DDACB9
RGB	221, 172, 185
RGB Percent	87%, 67%, 73%
CMY	0.1340, 0.3261, 0.2752
CMYK	0.00, 0.22, 0.16, 0.13
HSL	344°, 42%, 77%
HSV	344°, 22%, 87%
XYZ	53.2214, 48.2781, 52.3160
YIQ	188.1330, 25.0310, 14.4310

Conversions

Conversions Part 2

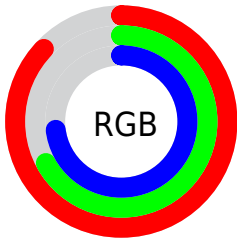
Format	Color
RYB	221, 172, 185
Decimal	14527673
CIELab	75.00, 19.87, 0.25
CIELCh	75, 19.876, 0.720
Yxy	48.2781, 0.3460, 0.3139
Android (android.graphics.Color)	4292717753 (0xFFDDACB9)
YUV	188.1330, -1.5446, 28.8244
Hunter-Lab	69.4824, 15.1312, 3.9960

Details

The CIELCh color $75, 19.876, 0.720$ is a light color, and the websafe version is hex `CC9999`. A complement of this color would be $84, 18.472, 176.315$, and the grayscale version is $76, 0.009, 296.813$.

A 20% lighter version of the original color is $93, 11.758, 345.534$, and $55, 20.012, 0.153$ is the 20% darker color. If you saturate the color by 10%, you get $69, 29.334, 2.095$, and if you desaturate by 10%, it is $81, 10.689, 359.552$.

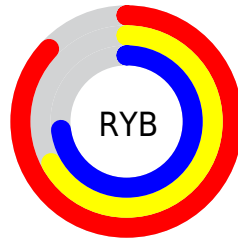
Distribution



Red (87%)

Green (67%)

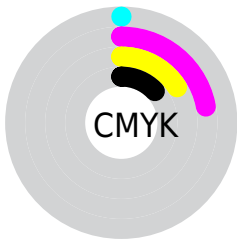
Blue (73%)



Red (87%)

Yellow (67%)

Blue (73%)

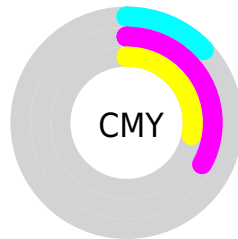


Cyan (0%)

Magenta (22%)

Yellow (16%)

Black (13%)



Cyan (13%)


Magenta (33%)

Yellow (28%)

Brightness & Saturation Gradients

These gradients show how the CIELCh color 75, 19.876, 0.720 changes by changing the brightness by 10 percent. The first figure shows a shift by +10% for each color and the second figure -10%.

Similar to the brightness gradients but the following saturation gradients show a change of the CIELCh color 75, 19.876, 0.720 by changing the saturation by 10% instead.

 75, 19.876, 0.720  75, 19.876, 0.720

 100, 19.876, 0.720  65, 19.876, 0.720

 95, 19.876, 0.720  55, 19.876, 0.720

 45, 19.876, 0.720

 35, 19.876, 0.720

 25, 19.876, 0.720

 15, 19.876, 0.720

 5, 19.876, 0.720

 0, 19.876, 0.720

 75, 19.876, 0.720

 75, 19.876, 0.720

69, 29.334, 2.095

81, 10.689,
359.552

64, 38.896, 3.745

87, 1.876, 358.332

59, 48.285, 5.779

93, 6.528, 177.831

55, 57.129, 8.332

98, 12.009,
185.689

52, 65.012, 11.567

49, 71.615, 15.645

98, 11.537,
198.735

47, 76.894, 20.628

47, 80.479, 24.907

Harmonies

Complementary

The Complementary color scheme is a pair of colors which are on the opposite of each other on the color wheel.



75, 19.876, 0.720



84, 18.472, 176.315

Rectangle

The Rectangle color scheme consists of four colors that form a rectangle on the color wheel.



75, 19.876, 0.720



75, 19.876, 50.720



75, 19.876, 180.720



75, 19.876, 230.720

Sweetspot

The Sweet Spot groups the original color and five complimentary colors.



75, 19.874, 0.724



95, 6.823, 358.990



75, 29.415, 317.728



50, 4.440, 359.058



0, 0.000, 0.000



53, 0.007, 296.813

Same Dimension

The Same Dimension uses a secret algorithm to generate beautiful new colors.



75, 19.874, 0.724



82, 27.436, 1.384



77, 16.005, 42.725



43, 4.922, 359.250



36, 66.741, 23.884



5, 23.824, 8.689

Inverse Universe

The Inverse Universe completely reimagines the original color for something new.



75, 19.874, 0.724



82, 27.436, 1.384



82, 13.864, 224.687



43, 4.922, 359.250



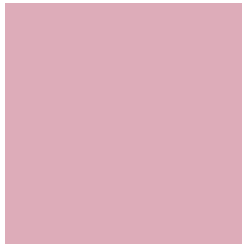
36, 66.741, 23.884



5, 23.824, 8.689

Previews

White Background



This preview shows how the CIELCh color 75, 19.876, 0.720 looks on a white background.

Color Contrast Check

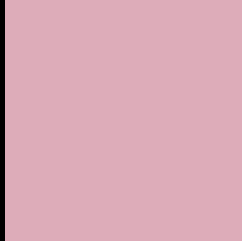
Large Text (above 18pt) WCAG AA × Fail

Any Text WCAG AA × Fail

Large Text (above 18pt) WCAG AAA × Fail

Any Text WCAG AAA × Fail

Black Background



This preview shows how the CIELCh color 75, 19.876, 0.720 looks on a black background.

Color Contrast Check

Large Text (above 18pt) WCAG AA ✓ Pass

Any Text WCAG AA ✓ Pass

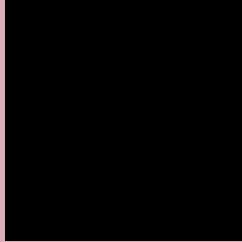
Large Text (above 18pt) WCAG AAA ✓ Pass

Any Text WCAG AAA ✓ Pass

If you want to check with other color combinations, try the [Color Contrast Checker](#).

CIELCh 75, 19.876, 0.720

Background



This preview shows how black text looks on a background with the CIELCh color 75, 19.876, 0.720.



This preview shows how white text looks on a background with the CIELCh color 75, 19.876, 0.720.

Color Blindness Simulation

Color vision deficiency is a very complex topic, and I could not describe the different causes any better than Wikipedia does, so if you want to learn more, you should check out their [article about color blindness](#).

Dichromacy



Original Color

75, 19.876, 0.720

Protanopia

75, 4.396, 300.162

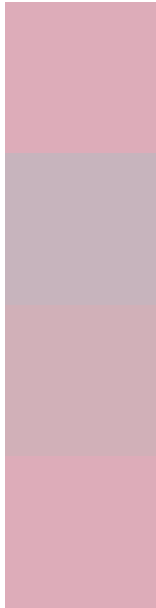
Deuteranopia

75, 9.340, 6.869



Tritanopia
75, 19.876, 0.720

Trichromacy



Original Color
75, 19.876, 0.720

Protanomaly
75, 8.612, 345.860

Deuteranomaly
75, 13.230, 1.609

Tritanomaly
75, 19.876, 0.720

Monochromacy



Original Color
75, 19.876, 0.720

Achromatopsia
76, 0.009, 296.813

Achromatomaly
76, 7.275, 358.305

CSS Examples

Text

The CSS property to change the color of the text to CIELCh 75, 19.876, 0.720 is called "color". The color property can be set on classes, ids or directly on the HTML element.

This example shows how text in the color `rgb(221, 172, 185)` looks like.

```
.text, #text, p{  
    color:rgb(221, 172, 185)  
}
```

If you want to add a text shadow in that color use the text-shadow property, you can generate a text shadow directly with our [CSS Text Shadow Generator](#).

Here you see how black text with a 4 pixel rgb(221, 172, 185) colored shadow looks like.

```
.shadow{ text-shadow: 4px 4px 2px rgb(221, 172, 185) }
```

Border

The CSS property to change the border of an element to CIELCh 75, 19.876, 0.720 is called "border". The border property can be set on classes, ids or directly on the HTML element.

This example shows the color as border, it can be applied via the CSS property "border" or "border-color".

```
.border, #border, table{ border:4px solid rgb(221, 172, 185) }
```

If only the border color should be changed use the property `border-color`.

```
.border{ border-color:rgb(221, 172, 185) }
```

If you want to add a box shadow in that color use:

Here you see how a box with a 4 pixel `rgb(221, 172, 185)` colored shadow looks like.

```
.boxshadow{ -moz-box-shadow:4px 4px 4px  
4px rgb(221, 172, 185); -webkit-box-  
shadow:4px 4px 4px 4px rgb(221, 172, 185);  
box-shadow:4px 4px 4px 4px rgb(221, 172,  
185) }
```

Background

The CSS property to change the background color of an element to CIELCh 75, 19.876, 0.720 is called "background". The background property can be set on classes, ids or directly on the HTML element.

```
.background, #background, body{  
background: rgb(221, 172, 185) }
```

If only the background color should be changed can be used:

```
.background{ background-color: rgb(221,  
172, 185) }
```

This example shows the color as background, it is applied via the CSS property "background".

To optimize and compress your CSS code, you can use our [online CSS compressor and optimizer](#) based on csstidy. If you want to create a linear or radial gradient as background or border, check our [CSS Gradient Generator](#).

Hey! You found this booklet interesting? Support Converting Colors with the new Membership Option!

The pro membership hides all ads, plus gives you double the colors in the color bucket, and more awesome pro features!

[Learn more, Memberships starting at \\$2.50/m!](#)

**Follow me
on Twitter!**

@ConvertingColor