

# Converting Colors

CIELCh(75, 20.207, 55.942)

Have a look what the booklet for  
CIELCh(75, 20.207, 55.942) contains.

<b>CIELCh(75, 20.534, 57.062)</b> .....	3
<i><b>Conversions</b></i> .....	4
<i><b>Details</b></i> .....	6
<i><b>Harmonies</b></i> .....	11
<i><b>Previews</b></i> .....	20
<i><b>Color Blindness Simulation</b></i> .....	23
<i><b>CSS Examples</b></i> .....	26

# Color

**CIELCh(75, 20.534, 57.062)**

# Conversions

## Conversions Part 1

Format	Color
Hex	D9B19A
RGB	217, 177, 154
RGB Percent	85%, 69%, 60%
CMY	0.1508, 0.3075, 0.3977
CMYK	0.00, 0.18, 0.29, 0.15
HSL	22°, 45%, 73%
HSV	22°, 29%, 85%
XYZ	49.9179, 48.2781, 37.0780
YIQ	186.3380, 31.2230, 1.3270

# Conversions

## Conversions Part 2

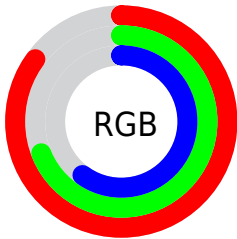
Format	Color
R <sub>Y</sub> B	217, 190, 154
Decimal	14266778
CIE Lab	75.00, 11.16, 17.23
CIE LCh	75, 20.534, 57.062
Yxy	48.2781, 0.3690, 0.3569
Android (android.graphics.Color)	4292456858 (0xFFD9B19A)
YUV	186.3380, -15.9426, 26.8906
Hunter-Lab	69.4824, 6.6446, 16.9987

# Details

The CIELCh color **75, 20.534, 57.062** is a light color, and the websafe version is hex **CC9999**. A complement of this color would be **76, 17.709, 243.303**, and the grayscale version is **76, 0.009, 296.813**.

A 20% lighter version of the original color is **93, 15.287, 76.423**, and **55, 20.432, 56.241** is the 20% darker color. If you saturate the color by 10%, you get **71, 28.587, 56.290**, and if you desaturate by 10%, it is **79, 13.010, 57.898**.

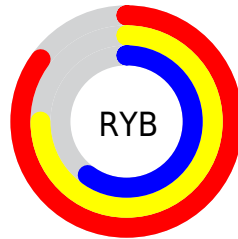
# Distribution



Red (85%)

Green (69%)

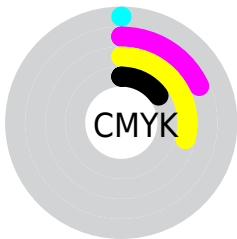
Blue (60%)



Red (85%)

Yellow (75%)

Blue (60%)

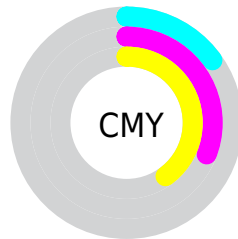


Cyan (0%)

Magenta (18%)

Yellow (29%)

Black (15%)



Cyan (15%)

Magenta (31%)

Yellow (40%)

# Brightness & Saturation Gradients

These gradients show how the CIELCh color 75, 20.534, 57.062 changes by changing the brightness by 10 percent. The first figure shows a shift by +10% for each color and the second figure -10%.

Similar to the brightness gradients but the following saturation gradients show a change of the CIELCh color 75, 20.534, 57.062 by changing the saturation by 10% instead.



75, 20.534, 57.062

75, 20.534, 57.062

100, 20.534,  
57.062

65, 20.534, 57.062

95, 20.534, 57.062

55, 20.534, 57.062

45, 20.534, 57.062

35, 20.534, 57.062

25, 20.534, 57.062

15, 20.534, 57.062

5, 20.534, 57.062

0, 20.534, 57.062

75, 20.534, 57.062

75, 20.534, 57.062

71, 28.587, 56.290

79, 13.010, 57.898

68, 37.180, 55.575

83, 5.982, 58.736

64, 46.269, 54.921

87, 0.595, 240.561

61, 55.702, 54.292

91, 6.770, 240.719

58, 65.102, 53.570

95, 10.745,  
226.595

55, 73.662, 52.474

97, 12.915,  
198.643

52, 80.335, 50.686

52, 80.937, 50.549

# Harmonies

# Complementary

The Complementary color scheme is a pair of colors which are on the opposite of each other on the color wheel.



75, 20.534, 57.062



76, 17.709, 243.303

# Rectangle

The Rectangle color scheme consists of four colors that form a rectangle on the color wheel.



75, 20.534, 57.062



75, 20.534, 107.062



75, 20.534, 237.062



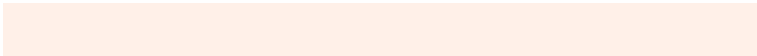
75, 20.534, 287.062

# Sweetspot

The Sweet Spot groups the original color and five complimentary colors.



75, 20.534, 57.070



96, 6.773, 58.736



71, 32.019, 338.615



51, 4.730, 58.616



0, 0.000, 0.000



53, 0.007, 296.813



# Same Dimension

The Same Dimension uses a secret algorithm to generate beautiful new colors.



75, 20.534, 57.070



84, 28.850, 56.576



83, 28.262, 100.005



43, 3.712, 58.709



41, 67.442, 51.161



8, 17.678, 43.921



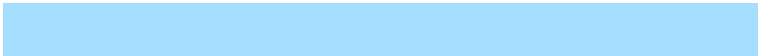


# Inverse Universe

The Inverse Universe completely reimagines the original color for something new.



76, 17.709, 243.303



86, 23.983, 244.413



68, 29.563, 287.189



43, 3.558, 240.669



44, 40.572, 266.925



9, 14.155, 255.527



# Previews

## White Background



This preview shows how the CIELCh color 75, 20.534, 57.062 looks on a white background.

## Color Contrast Check

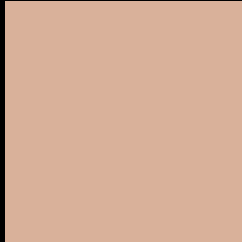
Large Text (above 18pt) WCAG AA × Fail

Any Text WCAG AA × Fail

Large Text (above 18pt) WCAG AAA × Fail

Any Text WCAG AAA × Fail

# Black Background



This preview shows how the CIELCh color 75, 20.534, 57.062 looks on a black background.

## Color Contrast Check

Large Text (above 18pt) WCAG AA ✓ Pass

Any Text WCAG AA ✓ Pass

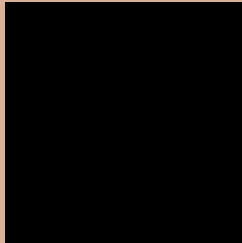
Large Text (above 18pt) WCAG AAA ✓ Pass

Any Text WCAG AAA ✓ Pass

If you want to check with other color combinations, try the [Color Contrast Checker](#).

# CIELCh 75, 20.534, 57.062

## Background



This preview shows how black text looks on a background with the CIELCh color 75, 20.534, 57.062.

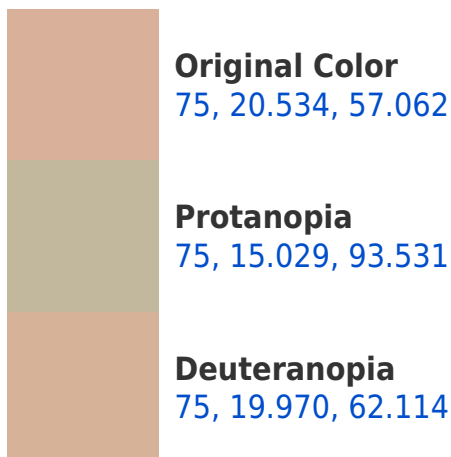


This preview shows how white text looks on a background with the CIELCh color 75, 20.534, 57.062.

# Color Blindness Simulation

Color vision deficiency is a very complex topic, and I could not describe the different causes any better than Wikipedia does, so if you want to learn more, you should check out their [article about color blindness](#).

## Dichromacy





**Tritanopia**  
75, 19.514, 0.277



# Trichromacy



**Original Color**  
75, 20.534, 57.062

**Protanomaly**  
75, 15.887, 77.064

**Deuteranomaly**  
75, 20.244, 59.545

**Tritanomaly**  
75, 17.524, 20.888

# Monochromacy



**Original Color**  
75, 20.534, 57.062

**Achromatopsia**  
76, 0.009, 296.813

**Achromatomaly**  
75, 7.219, 61.632

# CSS Examples

## Text

The CSS property to change the color of the text to CIELCh 75, 20.534, 57.062 is called "color". The color property can be set on classes, ids or directly on the HTML element.

This example shows how text in the color `rgb(217, 177, 154)` looks like.

```
.text, #text, p{  
    color:rgb(217, 177, 154)  
}
```

If you want to add a text shadow in that color use the text-shadow property, you can generate a text shadow directly with our [CSS Text Shadow Generator](#).

Here you see how black text with a 4 pixel rgb(217, 177, 154) colored shadow looks like.

```
.shadow{ text-shadow: 4px 4px 2px rgb(217, 177, 154) }
```

## Border

The CSS property to change the border of an element to CIELCh 75, 20.534, 57.062 is called "border". The border property can be set on classes, ids or directly on the HTML element.

This example shows the color as border, it can be applied via the CSS property "border" or "border-color".

```
.border, #border, table{ border:4px solid rgb(217, 177, 154) }
```

If only the border color should be changed use the property `border-color`.

```
.border{ border-color:rgb(217, 177, 154) }
```

If you want to add a box shadow in that color use:

Here you see how a box with a 4 pixel `rgb(217, 177, 154)` colored shadow looks like.

```
.boxshadow{ -moz-box-shadow:4px 4px 4px  
4px rgb(217, 177, 154); -webkit-box-  
shadow:4px 4px 4px 4px rgb(217, 177, 154);  
box-shadow:4px 4px 4px 4px rgb(217, 177,  
154) }
```

# Background

The CSS property to change the background color of an element to CIELCh 75, 20.534, 57.062 is called "background". The background property can be set on classes, ids or directly on the HTML element.

```
.background, #background, body{  
background: rgb(217, 177, 154) }
```

If only the background color should be changed can be used:

```
.background{ background-color: rgb(217,  
177, 154) }
```

This example shows the color as background, it is applied via the CSS property "background".

To optimize and compress your CSS code, you can use our [online CSS compressor and optimizer](#) based on csstidy. If you want to create a linear or radial gradient as background or border, check our [CSS Gradient Generator](#).

Hey! You found this booklet interesting? Support Converting Colors with the new Membership Option!

The pro membership hides all ads, plus gives you double the colors in the color bucket, and more awesome pro features!

**[Learn more, Memberships starting at \\$2.50/m!](#)**

**Follow me  
on Twitter!**

@ConvertingColor