

Converting Colors

CIELCh(75, 20.480, 64.392)

Have a look what the booklet for
CIELCh(75, 20.480, 64.392) contains.

CIELCh(75, 20.466, 64.886)	3
<i>Conversions</i>	4
<i>Details</i>	6
<i>Harmonies</i>	11
<i>Previews</i>	20
<i>Color Blindness Simulation</i>	23
<i>CSS Examples</i>	26

Color

CIELCh(75, 20.466, 64.886)

Conversions

Conversions Part 1

Format	Color
Hex	D5B297
RGB	213, 178, 151
RGB Percent	84%, 70%, 59%
CMY	0.1643, 0.3016, 0.4075
CMYK	0.00, 0.16, 0.29, 0.16
HSL	26°, 43%, 71%
HSV	26°, 29%, 84%
XYZ	49.0034, 48.2781, 36.0539
YIQ	185.3870, 29.5270, -0.9770

Conversions

Conversions Part 2

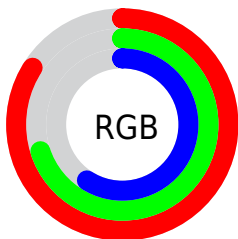
Format	Color
R _Y B	213, 199, 151
Decimal	14004887
CIE Lab	75.00, 8.69, 18.53
CIE LCh	75, 20.466, 64.886
Yxy	48.2781, 0.3675, 0.3621
Android (android.graphics.Color)	4292194967 (0xFFD5B297)
YUV	185.3870, -16.9528, 24.2166
Hunter-Lab	69.4824, 4.2952, 17.8726

Details

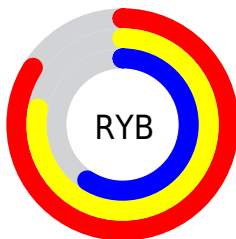
The CIELCh color $75, 20.466, 64.886$ is a light color, and the websafe version is hex `CC9999`. A complement of this color would be $74, 18.274, 252.386$, and the grayscale version is $75, 0.009, 296.813$.

A 20% lighter version of the original color is $94, 16.879, 80.992$, and $55, 20.307, 64.526$ is the 20% darker color. If you saturate the color by 10%, you get $72, 28.326, 63.815$, and if you desaturate by 10%, it is $78, 13.044, 65.984$.

Distribution



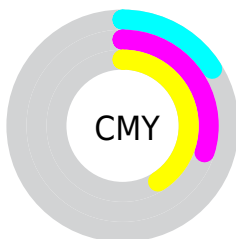
- Red (84%)
- Green (70%)
- Blue (59%)



- Red (84%)
- Yellow (78%)
- Blue (59%)



- Cyan (0%)
- Magenta (16%)
- Yellow (29%)
- Black (16%)



- Cyan (16%)
- Magenta (30%)
- Yellow (41%)


Brightness & Saturation Gradients

These gradients show how the CIELCh color 75, 20.466, 64.886 changes by changing the brightness by 10 percent. The first figure shows a shift by +10% for each color and the second figure -10%.

Similar to the brightness gradients but the following saturation gradients show a change of the CIELCh color 75, 20.466, 64.886 by changing the saturation by 10% instead.

 75, 20.466, 64.886

 75, 20.466, 64.886

 100, 20.466,
64.886

 65, 20.466, 64.886

 95, 20.466, 64.886

 55, 20.466, 64.886

 45, 20.466, 64.886

 35, 20.466, 64.886

 25, 20.466, 64.886

 15, 20.466, 64.886

 5, 20.466, 64.886

 0, 20.466, 64.886

 75, 20.466, 64.886

 75, 20.466, 64.886

72, 28.326, 63.815

78, 13.044, 65.984

68, 36.622, 62.754

82, 6.037, 67.055

65, 45.293, 61.703

86, 0.590, 248.977

62, 54.169, 60.616

89, 6.876, 249.392

59, 62.854, 59.377

93, 11.888,
245.910

57, 70.559, 57.726

96, 12.602,
209.820

54, 76.404, 55.404

54, 76.924, 55.215

97, 14.017,
198.571

Harmonies

Complementary

The Complementary color scheme is a pair of colors which are on the opposite of each other on the color wheel.



75, 20.466, 64.886



74, 18.274, 252.386

Rectangle

The Rectangle color scheme consists of four colors that form a rectangle on the color wheel.



75, 20.466, 64.886



75, 20.466, 114.886



75, 20.466, 244.886



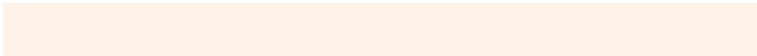
75, 20.466, 294.886

Sweetspot

The Sweet Spot groups the original color and five complimentary colors.



75, 20.466, 64.894



96, 6.908, 67.055



69, 29.935, 342.709



51, 4.821, 66.903



0, 0.000, 0.000



53, 0.007, 296.813

Same Dimension

The Same Dimension uses a secret algorithm to generate beautiful new colors.



75, 20.466, 64.894



86, 29.010, 64.216



83, 30.244, 104.371



43, 3.785, 67.021



44, 64.959, 55.833



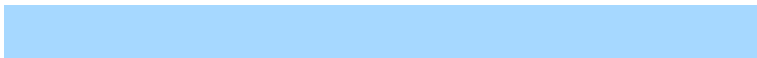
9, 17.184, 51.659

Inverse Universe

The Inverse Universe completely reimagines the original color for something new.



74, 18.274, 252.386



84, 25.190, 253.635



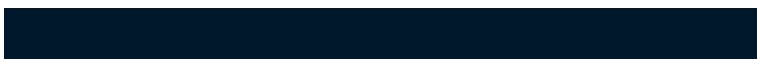
66, 32.128, 291.077



43, 3.667, 249.334



40, 46.684, 276.671



8, 15.628, 265.670

Previews

White Background



This preview shows how the CIELCh color 75, 20.466, 64.886 looks on a white background.

Color Contrast Check

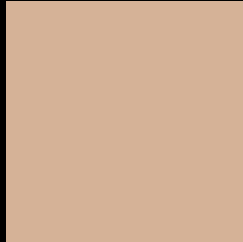
Large Text (above 18pt) WCAG AA × Fail

Any Text WCAG AA × Fail

Large Text (above 18pt) WCAG AAA × Fail

Any Text WCAG AAA × Fail

Black Background



This preview shows how the CIELCh color 75, 20.466, 64.886 looks on a black background.

Color Contrast Check

Large Text (above 18pt) WCAG AA ✓ Pass

Any Text WCAG AA ✓ Pass

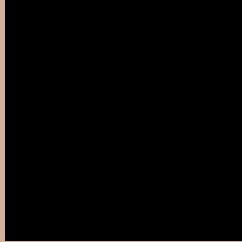
Large Text (above 18pt) WCAG AAA ✓ Pass

Any Text WCAG AAA ✓ Pass

If you want to check with other color combinations, try the [Color Contrast Checker](#).

CIELCh 75, 20.466, 64.886

Background



This preview shows how black text looks on a background with the CIELCh color 75, 20.466, 64.886.

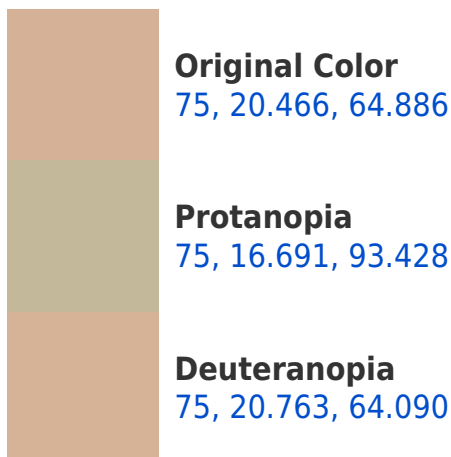


This preview shows how white text looks on a background with the CIELCh color 75, 20.466, 64.886.

Color Blindness Simulation

Color vision deficiency is a very complex topic, and I could not describe the different causes any better than Wikipedia does, so if you want to learn more, you should check out their [article about color blindness](#).

Dichromacy





Tritanopia
75, 18.247, 356.758

Trichromacy



Original Color
75, 20.466, 64.886

Protanomaly
75, 17.568, 81.523

Deuteranomaly
75, 20.763, 64.090

Tritanomaly
75, 15.955, 22.648

Monochromacy



Original Color
75, 20.466, 64.886

Achromatopsia
75, 0.009, 296.813

Achromatomaly
75, 6.942, 63.764

CSS Examples

Text

The CSS property to change the color of the text to CIELCh 75, 20.466, 64.886 is called "color". The color property can be set on classes, ids or directly on the HTML element.

This example shows how text in the color `rgb(213, 178, 151)` looks like.

```
.text, #text, p{  
    color:rgb(213, 178, 151)  
}
```

If you want to add a text shadow in that color use the text-shadow property, you can generate a text shadow directly with our [CSS Text Shadow Generator](#).

Here you see how black text with a 4 pixel rgb(213, 178, 151) colored shadow looks like.

```
.shadow{ text-shadow: 4px 4px 2px rgb(213, 178, 151) }
```

Border

The CSS property to change the border of an element to CIELCh 75, 20.466, 64.886 is called "border". The border property can be set on classes, ids or directly on the HTML element.

This example shows the color as border, it can be applied via the CSS property "border" or "border-color".

```
.border, #border, table{ border:4px solid rgb(213, 178, 151) }
```

If only the border color should be changed use the property `border-color`.

```
.border{ border-color:rgb(213, 178, 151) }
```

If you want to add a box shadow in that color use:

Here you see how a box with a 4 pixel `rgb(213, 178, 151)` colored shadow looks like.

```
.boxshadow{ -moz-box-shadow:4px 4px 4px  
4px rgb(213, 178, 151); -webkit-box-  
shadow:4px 4px 4px 4px rgb(213, 178, 151);  
box-shadow:4px 4px 4px 4px rgb(213, 178,  
151) }
```

Background

The CSS property to change the background color of an element to CIELCh 75, 20.466, 64.886 is called "background". The background property can be set on classes, ids or directly on the HTML element.

```
.background, #background, body{  
background: rgb(213, 178, 151) }
```

If only the background color should be changed can be used:

```
.background{ background-color: rgb(213,  
178, 151) }
```

This example shows the color as background, it is applied via the CSS property "background".

To optimize and compress your CSS code, you can use our [online CSS compressor and optimizer](#) based on csstidy. If you want to create a linear or radial gradient as background or border, check our [CSS Gradient Generator](#).

Hey! You found this booklet interesting? Support Converting Colors with the new Membership Option!

The pro membership hides all ads, plus gives you double the colors in the color bucket, and more awesome pro features!

[Learn more, Memberships starting at \\$2.50/m!](#)

**Follow me
on Twitter!**

@ConvertingColor