

Converting Colors

CIELCh(75, 21.666, 73.666)

Have a look what the booklet for
CIELCh(75, 21.666, 73.666) contains.

CIELCh(75, 21.669, 74.139)	3
<i>Conversions</i>	4
<i>Details</i>	6
<i>Harmonies</i>	11
<i>Previews</i>	20
<i>Color Blindness Simulation</i>	23
<i>CSS Examples</i>	26

Color

CIELCh(75, 21.669, 74.139)

Conversions

Conversions Part 1

Format	Color
Hex	D2B493
RGB	210, 180, 147
RGB Percent	82%, 71%, 58%
CMY	0.1777, 0.2952, 0.4246
CMYK	0.00, 0.14, 0.30, 0.18
HSL	31°, 41%, 70%
HSV	31°, 30%, 82%
XYZ	47.9969, 48.2781, 34.2760
YIQ	185.2080, 28.4730, -3.9030

Conversions

Conversions Part 2

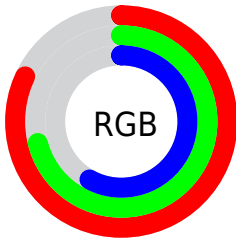
Format	Color
RYB	204, 210, 147
Decimal	13808787
CIELab	75.00, 5.92, 20.84
CIElCh	75, 21.669, 74.139
Yxy	48.2781, 0.3676, 0.3698
Android (android.graphics.Color)	4291998867 (0xFFD2B493)
YUV	185.2080, -18.8365, 21.7426
Hunter-Lab	69.4824, 1.7095, 19.3897

Details

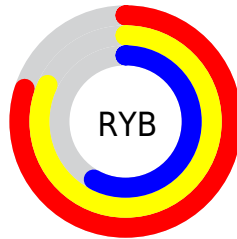
The CIELCh color **75, 21.669, 74.139** is a light color, and the websafe version is hex **CCCC99**. A complement of this color would be **71, 20.193, 262.729**, and the grayscale version is **75, 0.009, 296.813**.

A 20% lighter version of the original color is **94, 19.342, 86.872**, and **55, 21.823, 73.357** is the 20% darker color. If you saturate the color by 10%, you get **72, 29.509, 72.840**, and if you desaturate by 10%, it is **78, 14.144, 75.429**.

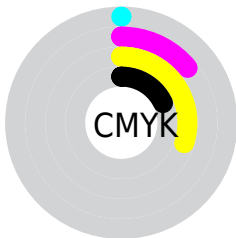
Distribution



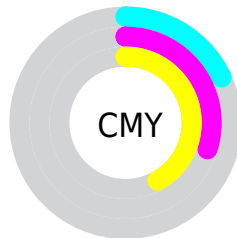
- Red (82%)
- Green (71%)
- Blue (58%)



- Red (80%)
- Yellow (82%)
- Blue (58%)



- Cyan (0%)
- Magenta (14%)
- Yellow (30%)
- Black (18%)



- Cyan (18%)
- Magenta (30%)
- Yellow (42%)

Brightness & Saturation Gradients

These gradients show how the CIELCh color 75, 21.669, 74.139 changes by changing the brightness by 10 percent. The first figure shows a shift by +10% for each color and the second figure -10%.

Similar to the brightness gradients but the following saturation gradients show a change of the CIELCh color 75, 21.669, 74.139 by changing the saturation by 10% instead.

■ 75, 21.669, 74.139

■ 75, 21.669, 74.139

■ 100, 21.669,
74.139

■ 65, 21.669, 74.139

■ 95, 21.669, 74.139

■ 55, 21.669, 74.139

■ 45, 21.669, 74.139

■ 35, 21.669, 74.139

■ 25, 21.669, 74.139

■ 15, 21.669, 74.139

■ 5, 21.669, 74.139

■ 0, 21.669, 74.139

■ 75, 21.669, 74.139

■ 75, 21.669, 74.139

72, 29.509, 72.840

78, 14.144, 75.429

69, 37.631, 71.512

81, 6.932, 76.671

67, 45.937, 70.144

84, 0.015, 53.351

64, 54.201, 68.686

87, 6.635, 259.222

61, 61.960, 67.023

90, 13.041,
260.359

59, 68.407, 64.922

93, 12.553,
238.339

57, 72.982, 62.256

96, 13.499,
210.550

97, 15.096,
198.500

Harmonies

Complementary

The Complementary color scheme is a pair of colors which are on the opposite of each other on the color wheel.



75, 21.669, 74.139



71, 20.193, 262.729

Rectangle

The Rectangle color scheme consists of four colors that form a rectangle on the color wheel.



75, 21.669, 74.139



75, 21.669, 124.139



75, 21.669, 254.139



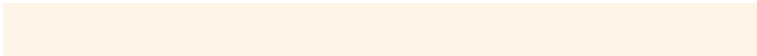
75, 21.669, 304.139

Sweetspot

The Sweet Spot groups the original color and five complimentary colors.



75, 21.669, 74.146



97, 7.274, 76.782



68, 28.973, 347.405



51, 5.071, 76.606



0, 0.000, 0.000



53, 0.007, 296.813

Same Dimension

The Same Dimension uses a secret algorithm to generate beautiful new colors.



75, 21.669, 74.146



87, 30.864, 73.316



83, 32.795, 108.014



42, 3.906, 76.746



46, 61.801, 62.878



9, 15.727, 61.602

Inverse Universe

The Inverse Universe completely reimagines the original color for something new.



71, 20.193, 262.729



82, 28.284, 264.083



63, 35.276, 294.415



42, 3.835, 259.261



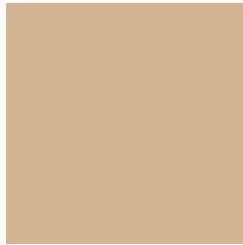
35, 55.088, 286.003



6, 16.726, 274.155

Previews

White Background



This preview shows how the CIELCh color 75, 21.669, 74.139 looks on a white background.

Color Contrast Check

Large Text (above 18pt) WCAG AA × Fail

Any Text WCAG AA × Fail

Large Text (above 18pt) WCAG AAA × Fail

Any Text WCAG AAA × Fail

Black Background



This preview shows how the CIELCh color 75, 21.669, 74.139 looks on a black background.

Color Contrast Check

Large Text (above 18pt) WCAG AA ✓ Pass

Any Text WCAG AA ✓ Pass

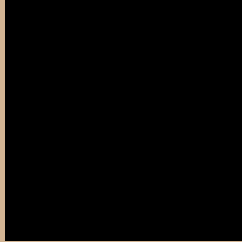
Large Text (above 18pt) WCAG AAA ✓ Pass

Any Text WCAG AAA ✓ Pass

If you want to check with other color combinations, try the [Color Contrast Checker](#).

CIELCh 75, 21.669, 74.139

Background



This preview shows how black text looks on a background with the CIELCh color 75, 21.669, 74.139.



This preview shows how white text looks on a background with the CIELCh color 75, 21.669, 74.139.

Color Blindness Simulation

Color vision deficiency is a very complex topic, and I could not describe the different causes any better than Wikipedia does, so if you want to learn more, you should check out their [article about color blindness](#).

Dichromacy



Original Color


75, 21.669, 74.139

Protanopia

75, 19.391, 93.977

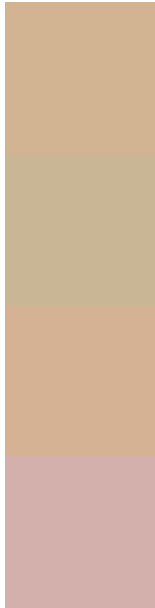
Deuteranopia

75, 22.608, 65.230



Tritanopia
75, 16.846, 354.420

Trichromacy



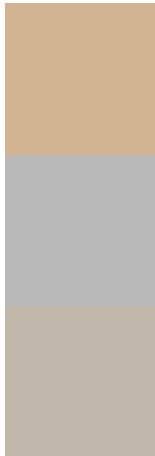
Original Color
75, 21.669, 74.139

Protanomaly
75, 19.855, 85.662

Deuteranomaly
75, 22.139, 68.375

Tritanomaly
75, 14.098, 27.064

Monochromacy



Original Color
75, 21.669, 74.139

Achromatopsia
75, 0.009, 296.813

Achromatomaly
75, 7.708, 76.230

CSS Examples

Text

The CSS property to change the color of the text to CIELCh 75, 21.669, 74.139 is called "color". The color property can be set on classes, ids or directly on the HTML element.

This example shows how text in the color `rgb(210, 180, 147)` looks like.

```
.text, #text, p{  
    color:rgb(210, 180, 147)  
}
```

If you want to add a text shadow in that color use the text-shadow property, you can generate a text shadow directly with our [CSS Text Shadow Generator](#).

Here you see how black text with a 4 pixel rgb(210, 180, 147) colored shadow looks like.

```
.shadow{ text-shadow: 4px 4px 2px rgb(210, 180, 147) }
```

Border

The CSS property to change the border of an element to CIELCh 75, 21.669, 74.139 is called "border". The border property can be set on classes, ids or directly on the HTML element.

This example shows the color as border, it can be applied via the CSS property "border" or "border-color".

```
.border, #border, table{ border:4px solid rgb(210, 180, 147) }
```

If only the border color should be changed use the property border-color.

```
.border{ border-color:rgb(210, 180, 147) }
```

If you want to add a box shadow in that color use:

Here you see how a box with a 4 pixel rgb(210, 180, 147) colored shadow looks like.

```
.boxshadow{ -moz-box-shadow:4px 4px 4px  
4px rgb(210, 180, 147); -webkit-box-  
shadow:4px 4px 4px 4px rgb(210, 180, 147);  
box-shadow:4px 4px 4px 4px rgb(210, 180,  
147) }
```

Background

The CSS property to change the background color of an element to CIELCh 75, 21.669, 74.139 is called "background". The background property can be set on classes, ids or directly on the HTML element.

```
.background, #background, body{  
background: rgb(210, 180, 147) }
```

If only the background color should be changed can be used:

```
.background{ background-color: rgb(210,  
180, 147) }
```

This example shows the color as background, it is applied via the CSS property "background".

To optimize and compress your CSS code, you can use our [online CSS compressor and optimizer](#) based on csstidy. If you want to create a linear or radial gradient as background or border, check our [CSS Gradient Generator](#).

Hey! You found this booklet interesting? Support Converting Colors with the new Membership Option!

The pro membership hides all ads, plus gives you double the colors in the color bucket, and more awesome pro features!

[Learn more, Memberships starting at \\$2.50/m!](#)

**Follow me
on Twitter!**

@ConvertingColor