

Converting Colors

CIELCh(75, 22.060, 70.447)

Have a look what the booklet for
CIELCh(75, 22.060, 70.447) contains.

CIELCh(75, 22.005, 70.805)	3
<i>Conversions</i>	4
<i>Details</i>	6
<i>Harmonies</i>	11
<i>Previews</i>	20
<i>Color Blindness Simulation</i>	23
<i>CSS Examples</i>	26

Color

CIELCh(75, 22.005, 70.805)

Conversions

Conversions Part 1

Format	Color
Hex	D4B393
RGB	212, 179, 147
RGB Percent	83%, 70%, 58%
CMY	0.1691, 0.2985, 0.4239
CMYK	0.00, 0.16, 0.31, 0.17
HSL	30°, 43%, 70%
HSV	30°, 31%, 83%
XYZ	48.4732, 48.2781, 34.3232
YIQ	185.2190, 29.9400, -2.9560

Conversions

Conversions Part 2

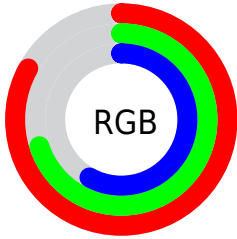
Format	Color
R _Y B	212, 210, 147
Decimal	13939603
CIE Lab	75.00, 7.23, 20.78
CIE LCh	75, 22.005, 70.805
Yxy	48.2781, 0.3698, 0.3683
Android (android.graphics.Color)	4292129683 (0xFFD4B393)
YUV	185.2190, -18.8420, 23.4869
Hunter-Lab	69.4824, 2.9330, 19.3494

Details

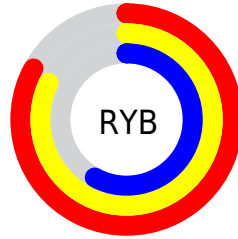
The CIELCh color **75, 22.005, 70.805** is a light color, and the websafe version is hex **FFCC99**. A complement of this color would be **72, 20.129, 259.414**, and the grayscale version is **75, 0.009, 296.813**.

A 20% lighter version of the original color is **94, 19.032, 85.288**, and **55, 21.938, 70.730** is the 20% darker color. If you saturate the color by 10%, you get **72, 29.899, 69.567**, and if you desaturate by 10%, it is **78, 14.473, 72.045**.

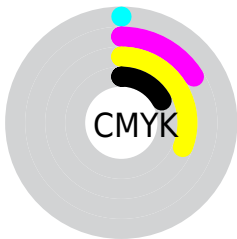
Distribution



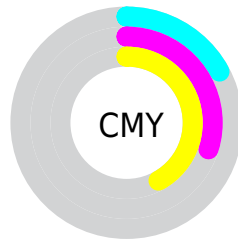
- Red (83%)
- Green (70%)
- Blue (58%)



- Red (83%)
- Yellow (82%)
- Blue (58%)



- Cyan (0%)
- Magenta (16%)
- Yellow (31%)
- Black (17%)



- Cyan (17%)
- Magenta (30%)
- Yellow (42%)

Brightness & Saturation Gradients

These gradients show how the CIELCh color 75, 22.005, 70.805 changes by changing the brightness by 10 percent. The first figure shows a shift by +10% for each color and the second figure -10%.

Similar to the brightness gradients but the following saturation gradients show a change of the CIELCh color 75, 22.005, 70.805 by changing the saturation by 10% instead.

75, 22.005, 70.805

75, 22.005, 70.805

100, 22.005,
70.805

65, 22.005, 70.805

95, 22.005, 70.805

55, 22.005, 70.805

45, 22.005, 70.805

35, 22.005, 70.805

25, 22.005, 70.805

15, 22.005, 70.805

5, 22.005, 70.805

0, 22.005, 70.805

75, 22.005, 70.805

75, 22.005, 70.805

72, 29.899, 69.567

78, 14.473, 72.045

69, 38.128, 68.311

81, 7.293, 73.248

66, 46.601, 67.027

85, 0.442, 73.628

63, 55.093, 65.662

88, 6.110, 255.756

61, 63.134, 64.085

91, 12.394,
256.871

58, 69.880, 62.040

94, 11.950,
228.879

56, 74.509, 59.596

97, 14.125,
200.272

97, 14.404,
198.545

Harmonies

Complementary

The Complementary color scheme is a pair of colors which are on the opposite of each other on the color wheel.



75, 22.005, 70.805



72, 20.129, 259.414

Rectangle

The Rectangle color scheme consists of four colors that form a rectangle on the color wheel.



75, 22.005, 70.805



75, 22.005, 120.805



75, 22.005, 250.805



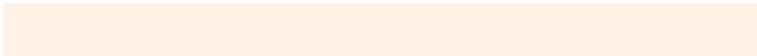
75, 22.005, 300.805

Sweetspot

The Sweet Spot groups the original color and five complimentary colors.



75, 22.005, 70.812



97, 7.120, 73.431



68, 30.448, 345.574



51, 4.965, 73.261



0, 0.000, 0.000



53, 0.007, 296.813

Same Dimension

The Same Dimension uses a secret algorithm to generate beautiful new colors.



75, 22.005, 70.812



86, 31.361, 69.977



83, 33.237, 106.502



43, 3.901, 73.393



46, 63.266, 60.206



10, 17.038, 58.347

Inverse Universe

The Inverse Universe completely reimagines the original color for something new.



72, 20.129, 259.414



82, 28.061, 260.854



63, 35.732, 293.348



43, 3.812, 255.868



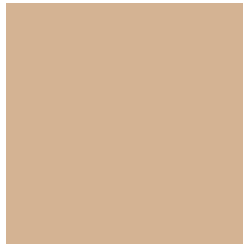
37, 52.388, 283.026



7, 17.007, 272.166

Previews

White Background



This preview shows how the CIELCh color 75, 22.005, 70.805 looks on a white background.

Color Contrast Check

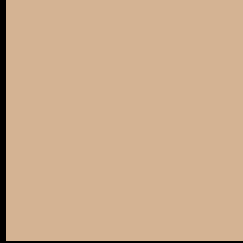
Large Text (above 18pt) WCAG AA × Fail

Any Text WCAG AA × Fail

Large Text (above 18pt) WCAG AAA × Fail

Any Text WCAG AAA × Fail

Black Background



This preview shows how the CIELCh color 75, 22.005, 70.805 looks on a black background.

Color Contrast Check

Large Text (above 18pt) WCAG AA ✓ Pass

Any Text WCAG AA ✓ Pass

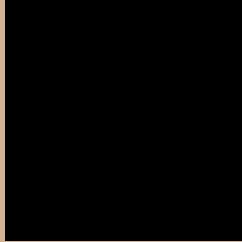
Large Text (above 18pt) WCAG AAA ✓ Pass

Any Text WCAG AAA ✓ Pass

If you want to check with other color combinations, try the [Color Contrast Checker](#).

CIELCh 75, 22.005, 70.805

Background



This preview shows how black text looks on a background with the CIELCh color 75, 22.005, 70.805.

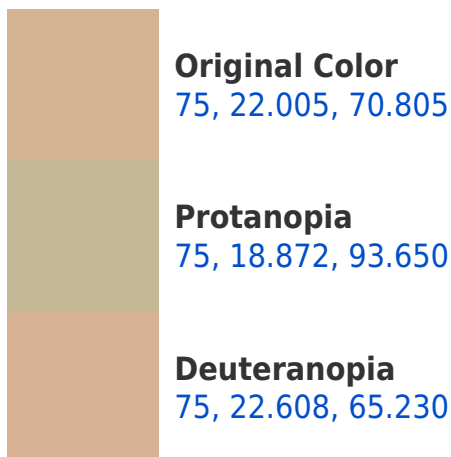


This preview shows how white text looks on a background with the CIELCh color 75, 22.005, 70.805.

Color Blindness Simulation

Color vision deficiency is a very complex topic, and I could not describe the different causes any better than Wikipedia does, so if you want to learn more, you should check out their [article about color blindness](#).

Dichromacy





Tritanopia
75, 17.898, 356.207

Trichromacy



Original Color
75, 22.005, 70.805

Protanomaly
75, 19.527, 84.043

Deuteranomaly
75, 22.419, 67.587

Tritanomaly
75, 15.706, 26.535

Monochromacy



Original Color
75, 22.005, 70.805

Achromatopsia
75, 0.009, 296.813

Achromatomaly
75, 7.928, 73.882

CSS Examples

Text

The CSS property to change the color of the text to CIELCh 75, 22.005, 70.805 is called "color". The color property can be set on classes, ids or directly on the HTML element.

This example shows how text in the color `rgb(212, 179, 147)` looks like.

```
.text, #text, p{  
    color:rgb(212, 179, 147)  
}
```

If you want to add a text shadow in that color use the text-shadow property, you can generate a text shadow directly with our [CSS Text Shadow Generator](#).

Here you see how black text with a 4 pixel rgb(212, 179, 147) colored shadow looks like.

```
.shadow{ text-shadow: 4px 4px 2px rgb(212, 179, 147) }
```

Border

The CSS property to change the border of an element to CIELCh 75, 22.005, 70.805 is called "border". The border property can be set on classes, ids or directly on the HTML element.

This example shows the color as border, it can be applied via the CSS property "border" or "border-color".

```
.border, #border, table{ border:4px solid rgb(212, 179, 147) }
```

If only the border color should be changed use the property `border-color`.

```
.border{ border-color:rgb(212, 179, 147) }
```

If you want to add a box shadow in that color use:

Here you see how a box with a 4 pixel `rgb(212, 179, 147)` colored shadow looks like.

```
.boxshadow{ -moz-box-shadow:4px 4px 4px  
4px rgb(212, 179, 147); -webkit-box-  
shadow:4px 4px 4px 4px rgb(212, 179, 147);  
box-shadow:4px 4px 4px 4px rgb(212, 179,  
147) }
```

Background

The CSS property to change the background color of an element to CIELCh 75, 22.005, 70.805 is called "background". The background property can be set on classes, ids or directly on the HTML element.

```
.background, #background, body{  
background: rgb(212, 179, 147) }
```

If only the background color should be changed can be used:

```
.background{ background-color: rgb(212,  
179, 147) }
```

This example shows the color as background, it is applied via the CSS property "background".

To optimize and compress your CSS code, you can use our [online CSS compressor and optimizer](#) based on csstidy. If you want to create a linear or radial gradient as background or border, check our [CSS Gradient Generator](#).

Hey! You found this booklet interesting? Support Converting Colors with the new Membership Option!

The pro membership hides all ads, plus gives you double the colors in the color bucket, and more awesome pro features!

[Learn more, Memberships starting at \\$2.50/m!](#)

**Follow me
on Twitter!**

@ConvertingColor