

Converting Colors

CIELCh(75, 24.518, 67.332)

Have a look what the booklet for
CIELCh(75, 24.518, 67.332) contains.

CIELCh(75, 24.442, 66.175)	3
<i>Conversions</i>	4
<i>Details</i>	6
<i>Harmonies</i>	11
<i>Previews</i>	20
<i>Color Blindness Simulation</i>	23
<i>CSS Examples</i>	26

Color

CIELCh(75, 24.442, 66.175)

Conversions

Conversions Part 1

Format	Color
Hex	D9B190
RGB	217, 177, 144
RGB Percent	85%, 69%, 56%
CMY	0.1485, 0.3054, 0.4348
CMYK	0.00, 0.18, 0.34, 0.15
HSL	27°, 49%, 71%
HSV	27°, 34%, 85%
XYZ	49.4399, 48.2781, 33.1436
YIQ	185.1980, 34.4330, -1.7830

Conversions

Conversions Part 2

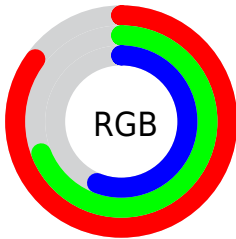
Format	Color
RYB	217, 204, 144
Decimal	14266768
CIELab	75.00, 9.87, 22.36
CIELCh	75, 24.442, 66.175
Yxy	48.2781, 0.3778, 0.3689
Android (android.graphics.Color)	4292456848 (0xFFD9B190)
YUV	185.1980, -20.3106, 27.8904
Hunter-Lab	69.4824, 5.4166, 20.3560

Details

The CIELCh color **75, 24.442, 66.175** is a light color, and the websafe version is hex **FFCC99**. A complement of this color would be **73, 21.603, 255.317**, and the grayscale version is **75, 0.009, 296.813**.

A 20% lighter version of the original color is **93, 19.860, 83.756**, and **55, 24.616, 65.701** is the 20% darker color. If you saturate the color by 10%, you get **72, 32.612, 65.050**, and if you desaturate by 10%, it is **78, 16.697, 67.321**.

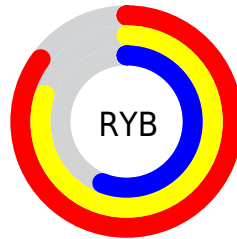
Distribution



Red (85%)

Green (69%)

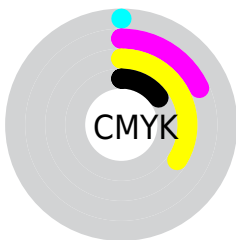
Blue (56%)



Red (85%)

Yellow (80%)

Blue (56%)

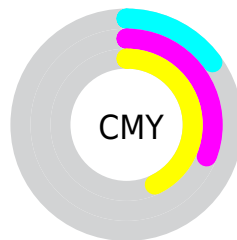


Cyan (0%)

Magenta (18%)

Yellow (34%)

Black (15%)



Cyan (15%)

Magenta (31%)

Yellow (43%)


Brightness & Saturation Gradients

These gradients show how the CIELCh color 75, 24.442, 66.175 changes by changing the brightness by 10 percent. The first figure shows a shift by +10% for each color and the second figure -10%.

Similar to the brightness gradients but the following saturation gradients show a change of the CIELCh color 75, 24.442, 66.175 by changing the saturation by 10% instead.

 75, 24.442, 66.175

 75, 24.442, 66.175

 100, 24.442,
66.175

 65, 24.442, 66.175

 95, 24.442, 66.175

 55, 24.442, 66.175

 45, 24.442, 66.175

 35, 24.442, 66.175

 25, 24.442, 66.175

 15, 24.442, 66.175

 5, 24.442, 66.175

 0, 24.442, 66.175

 75, 24.442, 66.175

 75, 24.442, 66.175

72, 32.612, 65.050

78, 16.697, 67.321

68, 41.179, 63.926

82, 9.366, 68.453

65, 50.033, 62.786

85, 2.422, 69.469

62, 58.904, 61.557

89, 4.172, 250.884

60, 67.223, 60.068

93, 10.452,
251.933

57, 73.981, 57.985

96, 10.973,
216.578

56, 77.377, 56.385

97, 12.731,
198.656

Harmonies

Complementary

The Complementary color scheme is a pair of colors which are on the opposite of each other on the color wheel.



75, 24.442, 66.175



73, 21.603, 255.317

Rectangle

The Rectangle color scheme consists of four colors that form a rectangle on the color wheel.



75, 24.442, 66.175



75, 24.442, 116.175



75, 24.442, 246.175



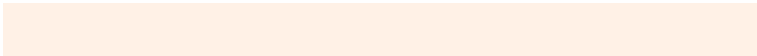
75, 24.442, 296.175

Sweetspot

The Sweet Spot groups the original color and five complimentary colors.



75, 24.442, 66.182



96, 7.756, 68.843



68, 34.759, 344.065



51, 5.312, 68.688



0, 0.000, 0.000



53, 0.007, 296.813

Same Dimension

The Same Dimension uses a secret algorithm to generate beautiful new colors.



75, 24.442, 66.182



84, 33.760, 65.418



84, 35.955, 104.695



44, 3.889, 68.914



45, 65.159, 57.009



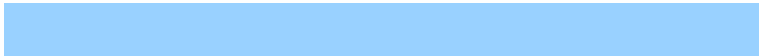
10, 18.428, 54.286

Inverse Universe

The Inverse Universe completely reimagines the original color for something new.



73, 21.603, 255.317



82, 29.007, 256.813



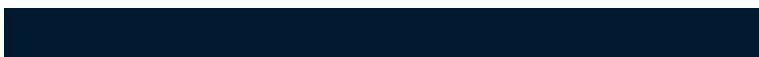
63, 38.762, 292.524



44, 3.776, 251.291



40, 48.867, 278.709



8, 16.781, 268.381

Previews

White Background



This preview shows how the CIELCh color 75, 24.442, 66.175 looks on a white background.

Color Contrast Check

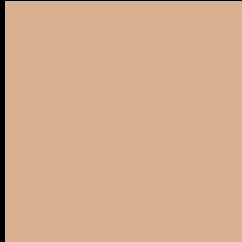
Large Text (above 18pt) WCAG AA × Fail

Any Text WCAG AA × Fail

Large Text (above 18pt) WCAG AAA × Fail

Any Text WCAG AAA × Fail

Black Background



This preview shows how the CIELCh color 75, 24.442, 66.175 looks on a black background.

Color Contrast Check

Large Text (above 18pt) WCAG AA ✓ Pass

Any Text WCAG AA ✓ Pass

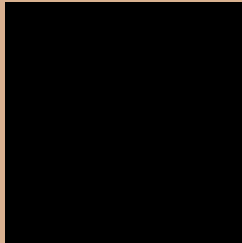
Large Text (above 18pt) WCAG AAA ✓ Pass

Any Text WCAG AAA ✓ Pass

If you want to check with other color combinations, try the [Color Contrast Checker](#).

CIELCh 75, 24.442, 66.175

Background



This preview shows how black text looks on a background with the CIELCh color 75, 24.442, 66.175.



This preview shows how white text looks on a background with the CIELCh color 75, 24.442, 66.175.

Color Blindness Simulation

Color vision deficiency is a very complex topic, and I could not describe the different causes any better than Wikipedia does, so if you want to learn more, you should check out their [article about color blindness](#).

Dichromacy



Original Color

75, 24.442, 66.175

Protanopia

75, 20.315, 95.696

Deuteranopia

75, 24.151, 66.884



Tritanopia
75, 20.414, 359.724

Trichromacy



Original Color
75, 24.442, 66.175

Protanomaly
75, 20.867, 83.048

Deuteranomaly
75, 24.151, 66.884

Tritanomaly
75, 18.550, 25.892

Monochromacy



Original Color
75, 24.442, 66.175

Achromatopsia
75, 0.009, 296.813

Achromatomaly
75, 8.676, 67.589

CSS Examples

Text

The CSS property to change the color of the text to CIELCh 75, 24.442, 66.175 is called "color". The color property can be set on classes, ids or directly on the HTML element.

This example shows how text in the color `rgb(217, 177, 144)` looks like.

```
.text, #text, p{  
    color:rgb(217, 177, 144)  
}
```

If you want to add a text shadow in that color use the text-shadow property, you can generate a text shadow directly with our [CSS Text Shadow Generator](#).

Here you see how black text with a 4 pixel rgb(217, 177, 144) colored shadow looks like.

```
.shadow{ text-shadow: 4px 4px 2px rgb(217, 177, 144) }
```

Border

The CSS property to change the border of an element to CIELCh 75, 24.442, 66.175 is called "border". The border property can be set on classes, ids or directly on the HTML element.

This example shows the color as border, it can be applied via the CSS property "border" or "border-color".

```
.border, #border, table{ border:4px solid rgb(217, 177, 144) }
```

If only the border color should be changed use the property `border-color`.

```
.border{ border-color:rgb(217, 177, 144) }
```

If you want to add a box shadow in that color use:

Here you see how a box with a 4 pixel `rgb(217, 177, 144)` colored shadow looks like.

```
.boxshadow{ -moz-box-shadow:4px 4px 4px  
4px rgb(217, 177, 144); -webkit-box-  
shadow:4px 4px 4px 4px rgb(217, 177, 144);  
box-shadow:4px 4px 4px 4px rgb(217, 177,  
144) }
```

Background

The CSS property to change the background color of an element to CIELCh 75, 24.442, 66.175 is called "background". The background property can be set on classes, ids or directly on the HTML element.

```
.background, #background, body{  
background: rgb(217, 177, 144) }
```

If only the background color should be changed can be used:

```
.background{ background-color: rgb(217,  
177, 144) }
```

This example shows the color as background, it is applied via the CSS property "background".

To optimize and compress your CSS code, you can use our [online CSS compressor and optimizer](#) based on csstidy. If you want to create a linear or radial gradient as background or border, check our [CSS Gradient Generator](#).

Hey! You found this booklet interesting? Support Converting Colors with the new Membership Option!

The pro membership hides all ads, plus gives you double the colors in the color bucket, and more awesome pro features!

[Learn more, Memberships starting at \\$2.50/m!](#)

**Follow me
on Twitter!**

@ConvertingColor