

Converting Colors

CIELCh(75, 26.092, 10.142)

Have a look what the booklet for
CIELCh(75, 26.092, 10.142) contains.

CIELCh(75, 26.107, 10.060)	3
<i>Conversions</i>	4
<i>Details</i>	6
<i>Harmonies</i>	11
<i>Previews</i>	20
<i>Color Blindness Simulation</i>	23
<i>CSS Examples</i>	26

Color

CIELCh(75, 26.107, 10.060)

Conversions

Conversions Part 1

Format	Color
Hex	E9A7B1
RGB	233, 167, 177
RGB Percent	91%, 65%, 69%
CMY	0.0853, 0.3441, 0.3049
CMYK	0.00, 0.28, 0.24, 0.09
HSL	351°, 60%, 79%
HSV	351°, 28%, 91%
XYZ	55.5127, 48.2781, 48.1149
YIQ	187.8740, 36.1260, 17.1020

Conversions

Conversions Part 2

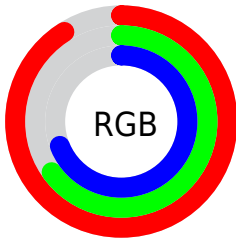
Format	Color
R _Y B	233, 167, 177
Decimal	15312817
CIE Lab	75.00, 25.71, 4.56
CIE LCh	75, 26.107, 10.060
Yxy	48.2781, 0.3654, 0.3178
Android (android.graphics.Color)	4293502897 (0xFFE9A7B1)
YUV	187.8740, -5.3609, 39.5755
Hunter-Lab	69.4824, 21.0174, 7.5808

Details

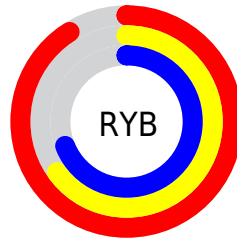
The CIELCh color **75, 26.107, 10.060** is a light color, and the websafe version is hex **CC9999**. A complement of this color would be **88, 22.783, 184.570**, and the grayscale version is **76, 0.009, 296.813**.

A 20% lighter version of the original color is **92, 12.661, 356.284**, and **55, 26.309, 9.032** is the 20% darker color. If you saturate the color by 10%, you get **69, 36.160, 11.633**, and if you desaturate by 10%, it is **81, 16.429, 8.782**.

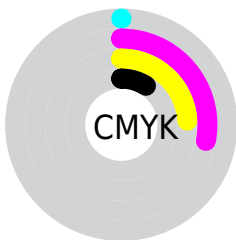
Distribution



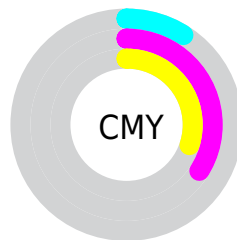
- Red (91%)
- Green (65%)
- Blue (69%)



- Red (91%)
- Yellow (65%)
- Blue (69%)



- Cyan (0%)
- Magenta (28%)
- Yellow (24%)
- Black (9%)



- Cyan (9%)
- Magenta (34%)
- Yellow (30%)

Brightness & Saturation Gradients

These gradients show how the CIELCh color 75, 26.107, 10.060 changes by changing the brightness by 10 percent. The first figure shows a shift by +10% for each color and the second figure -10%.

Similar to the brightness gradients but the following saturation gradients show a change of the CIELCh color 75, 26.107, 10.060 by changing the saturation by 10% instead.

75, 26.107, 10.060

75, 26.107, 10.060

100, 26.107,
10.060

65, 26.107, 10.060

95, 26.107, 10.060

55, 26.107, 10.060

45, 26.107, 10.060

35, 26.107, 10.060

25, 26.107, 10.060

15, 26.107, 10.060

5, 26.107, 10.060

0, 26.107, 10.060

75, 26.107, 10.060

75, 26.107, 10.060

69, 36.160, 11.633

81, 16.429, 8.782

64, 46.400, 13.595

87, 7.237, 7.689

59, 56.526, 16.080

94, 1.434, 187.298

55, 66.169, 19.236

98, 7.434, 199.024

52, 74.978, 23.177

50, 82.739, 27.868

49, 89.391, 32.884

49, 90.466, 33.654

Harmonies

Complementary

The Complementary color scheme is a pair of colors which are on the opposite of each other on the color wheel.



75, 26.107, 10.060



88, 22.783, 184.570

Rectangle

The Rectangle color scheme consists of four colors that form a rectangle on the color wheel.



75, 26.107, 10.060



75, 26.107, 60.060



75, 26.107, 190.060



75, 26.107, 240.060

Sweetspot

The Sweet Spot groups the original color and five complimentary colors.



75, 26.105, 10.064



95, 7.492, 7.661



76, 40.298, 321.088



50, 5.348, 7.821



0, 0.000, 0.000



53, 0.007, 296.813

Same Dimension

The Same Dimension uses a secret algorithm to generate beautiful new colors.



75, 26.105, 10.064



78, 34.196, 10.943



80, 21.223, 53.553



46, 4.994, 7.812



38, 74.152, 32.777



7, 28.010, 16.488

Inverse Universe

The Inverse Universe completely reimagines the original color for something new.



75, 26.105, 10.064



78, 34.196, 10.943



82, 18.124, 238.896



46, 4.994, 7.812



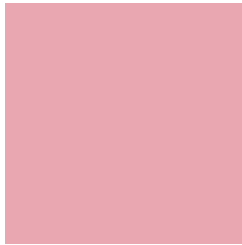
38, 74.152, 32.777



7, 28.010, 16.488

Previews

White Background



This preview shows how the CIELCh color 75, 26.107, 10.060 looks on a white background.

Color Contrast Check

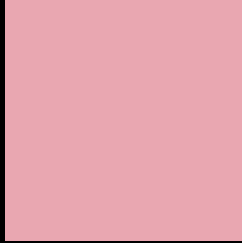
Large Text (above 18pt) WCAG AA × Fail

Any Text WCAG AA × Fail

Large Text (above 18pt) WCAG AAA × Fail

Any Text WCAG AAA × Fail

Black Background



This preview shows how the CIE LCh color 75, 26.107, 10.060 looks on a black background.

Color Contrast Check

Large Text (above 18pt) WCAG AA ✓ Pass

Any Text WCAG AA ✓ Pass

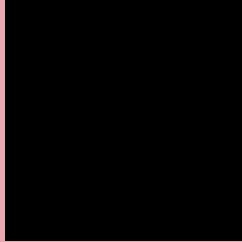
Large Text (above 18pt) WCAG AAA ✓ Pass

Any Text WCAG AAA ✓ Pass

If you want to check with other color combinations, try the [Color Contrast Checker](#).

CIELCh 75, 26.107, 10.060

Background



This preview shows how black text looks on a background with the CIELCh color 75, 26.107, 10.060.

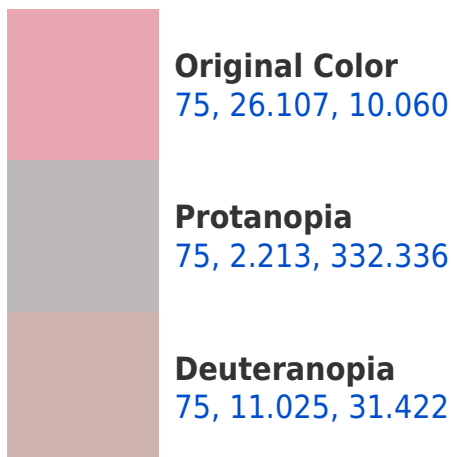


This preview shows how white text looks on a background with the CIELCh color 75, 26.107, 10.060.

Color Blindness Simulation

Color vision deficiency is a very complex topic, and I could not describe the different causes any better than Wikipedia does, so if you want to learn more, you should check out their [article about color blindness](#).

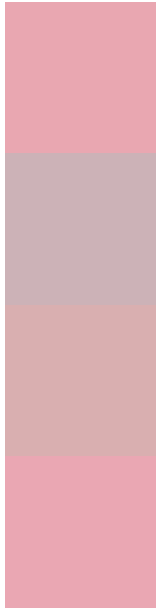
Dichromacy





Tritanopia
75, 26.691, 6.870

Trichromacy



Original Color
75, 26.107, 10.060

Protanomaly
75, 10.212, 5.005

Deuteranomaly
75, 16.277, 18.902

Tritanomaly
75, 26.614, 8.000

Monochromacy



Original Color
75, 26.107, 10.060

Achromatopsia
76, 0.009, 296.813

Achromatomaly
75, 9.330, 6.863

CSS Examples

Text

The CSS property to change the color of the text to CIELCh 75, 26.107, 10.060 is called "color". The color property can be set on classes, ids or directly on the HTML element.

This example shows how text in the color `rgb(233, 167, 177)` looks like.

```
.text, #text, p{  
    color:rgb(233, 167, 177)  
}
```

If you want to add a text shadow in that color use the text-shadow property, you can generate a text shadow directly with our [CSS Text Shadow Generator](#).

Here you see how black text with a 4 pixel rgb(233, 167, 177) colored shadow looks like.

```
.shadow{ text-shadow: 4px 4px 2px rgb(233, 167, 177) }
```

Border

The CSS property to change the border of an element to CIELCh 75, 26.107, 10.060 is called "border". The border property can be set on classes, ids or directly on the HTML element.

This example shows the color as border, it can be applied via the CSS property "border" or "border-color".

```
.border, #border, table{ border:4px solid rgb(233, 167, 177) }
```

If only the border color should be changed use the property border-color.

```
.border{ border-color:rgb(233, 167, 177) }
```

If you want to add a box shadow in that color use:

Here you see how a box with a 4 pixel rgb(233, 167, 177) colored shadow looks like.

```
.boxshadow{ -moz-box-shadow:4px 4px 4px  
4px rgb(233, 167, 177); -webkit-box-  
shadow:4px 4px 4px 4px rgb(233, 167, 177);  
box-shadow:4px 4px 4px 4px rgb(233, 167,  
177) }
```

Background

The CSS property to change the background color of an element to CIELCh 75, 26.107, 10.060 is called "background". The background property can be set on classes, ids or directly on the HTML element.

```
.background, #background, body{  
background: rgb(233, 167, 177) }
```

If only the background color should be changed can be used:

```
.background{ background-color: rgb(233,  
167, 177) }
```

This example shows the color as background, it is applied via the CSS property "background".

To optimize and compress your CSS code, you can use our [online CSS compressor and optimizer](#) based on csstidy. If you want to create a linear or radial gradient as background or border, check our [CSS Gradient Generator](#).

Hey! You found this booklet interesting? Support Converting Colors with the new Membership Option!

The pro membership hides all ads, plus gives you double the colors in the color bucket, and more awesome pro features!

[Learn more, Memberships starting at \\$2.50/m!](#)

**Follow me
on Twitter!**

@ConvertingColor