

# Converting Colors

CIELCh(75, 28.396, 72.732)

Have a look what the booklet for  
CIELCh(75, 28.396, 72.732) contains.

<b>CIELCh(75, 28.517, 73.172)</b> .....	3
<i><b>Conversions</b></i> .....	4
<i><b>Details</b></i> .....	6
<i><b>Harmonies</b></i> .....	11
<i><b>Previews</b></i> .....	20
<i><b>Color Blindness Simulation</b></i> .....	23
<i><b>CSS Examples</b></i> .....	26

# Color

**CIELCh(75, 28.517, 73.172)**

# Conversions

## Conversions Part 1

<b>Format</b>	<b>Color</b>
Hex	D9B287
RGB	217, 178, 135
RGB Percent	85%, 70%, 53%
CMY	0.1495, 0.3024, 0.4710
CMYK	0.00, 0.18, 0.38, 0.15
HSL	31°, 52%, 69%
HSV	31°, 38%, 85%
XYZ	48.8457, 48.2781, 29.6273
YIQ	184.7590, 37.0470, -5.1050

# Conversions

## Conversions Part 2

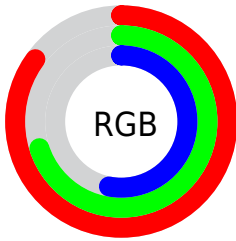
<b>Format</b>	<b>Color</b>
<b>R<sub>YB</sub></b>	209, 217, 135
Decimal	14267015
CIE <sub>Lab</sub>	75.00, 8.26, 27.30
CIE <sub>LCh</sub>	75, 28.517, 73.172
Yxy	48.2781, 0.3854, 0.3809
Android (android.graphics.Color)	4292457095 (0xFFD9B287)
YUV	184.7590, -24.5312, 28.2754
Hunter-Lab	69.4824, 3.8900, 23.3565

# Details

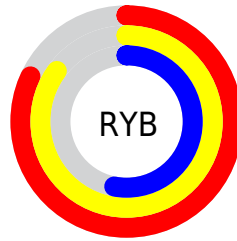
The CIELCh color **75, 28.517, 73.172** is a light color, and the websafe version is hex **CC9966**. A complement of this color would be **70, 26.042, 264.476**, and the grayscale version is **75, 0.009, 296.813**.

A 20% lighter version of the original color is **93, 24.481, 88.994**, and **55, 28.452, 72.243** is the 20% darker color. If you saturate the color by 10%, you get **72, 36.808, 71.851**, and if you desaturate by 10%, it is **78, 20.528, 74.483**.

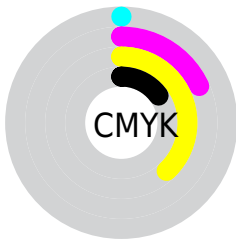
# Distribution



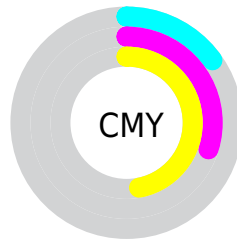
- Red (85%)
- Green (70%)
- Blue (53%)



- Red (82%)
- Yellow (85%)
- Blue (53%)



- Cyan (0%)
- Magenta (18%)
- Yellow (38%)
- Black (15%)



- Cyan (15%)
- Magenta (30%)
- Yellow (47%)

# Brightness & Saturation Gradients


These gradients show how the CIELCh color 75, 28.517, 73.172 changes by changing the brightness by 10 percent. The first figure shows a shift by +10% for each color and the second figure -10%.

Similar to the brightness gradients but the following saturation gradients show a change of the CIELCh color 75, 28.517, 73.172 by changing the saturation by 10% instead.



 75, 28.517, 73.172

 75, 28.517, 73.172

 100, 28.517,  
73.172

 65, 28.517, 73.172

 95, 28.517, 73.172

 55, 28.517, 73.172

 45, 28.517, 73.172

 35, 28.517, 73.172

 25, 28.517, 73.172

 15, 28.517, 73.172

 5, 28.517, 73.172

 0, 28.517, 73.172

 75, 28.517, 73.172

 75, 28.517, 73.172

72, 36.808, 71.851

78, 20.528, 74.483

69, 45.318, 70.490

81, 12.863, 75.762

67, 53.847, 69.053

84, 5.516, 76.990

64, 61.980, 67.443

87, 1.533, 258.534

61, 68.963, 65.452

91, 8.311, 259.536

59, 73.878, 62.801

94, 10.836,  
245.641

59, 74.866, 62.218

96, 11.372,  
211.603

97, 12.808,  
198.650

# Harmonies

# Complementary

The Complementary color scheme is a pair of colors which are on the opposite of each other on the color wheel.



75, 28.517, 73.172



70, 26.042, 264.476

# Rectangle

The Rectangle color scheme consists of four colors that form a rectangle on the color wheel.



75, 28.517, 73.172



75, 28.517, 123.172



75, 28.517, 253.172



75, 28.517, 303.172

# Sweetspot

The Sweet Spot groups the original color and five complimentary colors.



75, 28.517, 73.178



96, 8.933, 76.596



66, 37.512, 348.350



51, 6.020, 76.428



0, 0.000, 0.000



53, 0.007, 296.813



# Same Dimension

The Same Dimension uses a secret algorithm to generate beautiful new colors.



75, 28.517, 73.178



84, 39.327, 72.170



85, 42.137, 107.292



44, 4.064, 76.797



47, 63.192, 62.833



11, 18.382, 62.635



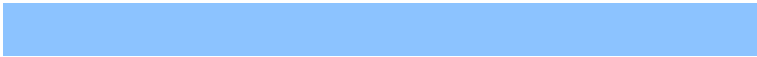


# Inverse Universe

The Inverse Universe completely reimagines the original color for something new.



70, 26.042, 264.476



77, 35.210, 266.348



59, 46.409, 295.667



44, 3.991, 259.326



36, 56.509, 286.161

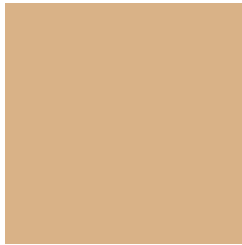


7, 18.812, 276.115



# Previews

## White Background



This preview shows how the CIE LCh color 75, 28.517, 73.172 looks on a white background.

## Color Contrast Check

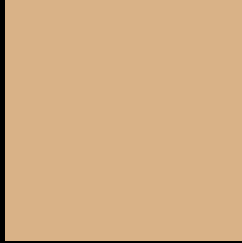
Large Text (above 18pt) WCAG AA × Fail

Any Text WCAG AA × Fail

Large Text (above 18pt) WCAG AAA × Fail

Any Text WCAG AAA × Fail

# Black Background



This preview shows how the CIELCh color 75, 28.517, 73.172 looks on a black background.

## Color Contrast Check

Large Text (above 18pt) WCAG AA ✓ Pass

Any Text WCAG AA ✓ Pass

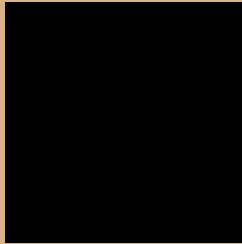
Large Text (above 18pt) WCAG AAA ✓ Pass

Any Text WCAG AAA ✓ Pass

If you want to check with other color combinations, try the [Color Contrast Checker](#).

# CIELCh 75, 28.517, 73.172

## Background



This preview shows how black text looks on a background with the CIELCh color 75, 28.517, 73.172.



This preview shows how white text looks on a background with the CIELCh color 75, 28.517, 73.172.

# Color Blindness Simulation

Color vision deficiency is a very complex topic, and I could not describe the different causes any better than Wikipedia does, so if you want to learn more, you should check out their [article about color blindness](#).

## Dichromacy



### Original Color

75, 28.517, 73.172

### Protanopia

75, 25.696, 95.806

### Deuteranopia

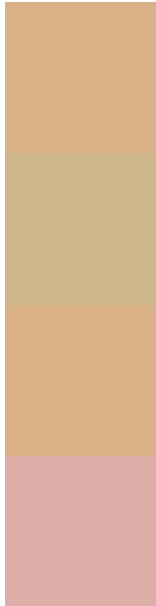
75, 28.891, 70.628



**Tritanopia**  
75, 20.773, 0.161



# Trichromacy



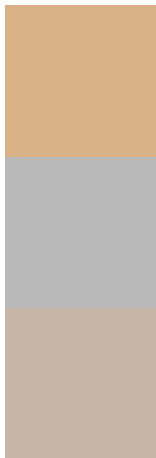
**Original Color**  
75, 28.517, 73.172

**Protanomaly**  
75, 26.000, 86.442

**Deuteranomaly**  
75, 28.623, 71.279

**Tritanomaly**  
75, 18.619, 32.425

# Monochromacy



**Original Color**  
75, 28.517, 73.172

**Achromatopsia**  
75, 0.009, 296.813

**Achromatomaly**  
75, 9.960, 73.530

# CSS Examples

## Text

The CSS property to change the color of the text to CIELCh 75, 28.517, 73.172 is called "color". The color property can be set on classes, ids or directly on the HTML element.

This example shows how text in the color `rgb(217, 178, 135)` looks like.

```
.text, #text, p{  
    color:rgb(217, 178, 135)  
}
```

If you want to add a text shadow in that color use the text-shadow property, you can generate a text shadow directly with our [CSS Text Shadow Generator](#).

Here you see how black text with a 4 pixel rgb(217, 178, 135) colored shadow looks like.

```
.shadow{ text-shadow: 4px 4px 2px rgb(217, 178, 135) }
```

## Border

The CSS property to change the border of an element to CIELCh 75, 28.517, 73.172 is called "border". The border property can be set on classes, ids or directly on the HTML element.

This example shows the color as border, it can be applied via the CSS property "border" or "border-color".

```
.border, #border, table{ border:4px solid rgb(217, 178, 135) }
```

If only the border color should be changed use the property `border-color`.

```
.border{ border-color:rgb(217, 178, 135) }
```

If you want to add a box shadow in that color use:

Here you see how a box with a 4 pixel `rgb(217, 178, 135)` colored shadow looks like.

```
.boxshadow{ -moz-box-shadow:4px 4px 4px  
4px rgb(217, 178, 135); -webkit-box-  
shadow:4px 4px 4px 4px rgb(217, 178, 135);  
box-shadow:4px 4px 4px 4px rgb(217, 178,  
135) }
```

# Background

The CSS property to change the background color of an element to CIELCh 75, 28.517, 73.172 is called "background". The background property can be set on classes, ids or directly on the HTML element.

```
.background, #background, body{  
background: rgb(217, 178, 135) }
```

If only the background color should be changed can be used:

```
.background{ background-color: rgb(217,  
178, 135) }
```

This example shows the color as background, it is applied via the CSS property "background".

To optimize and compress your CSS code, you can use our [online CSS compressor and optimizer](#) based on csstidy. If you want to create a linear or radial gradient as background or border, check our [CSS Gradient Generator](#).

Hey! You found this booklet interesting? Support Converting Colors with the new Membership Option!

The pro membership hides all ads, plus gives you double the colors in the color bucket, and more awesome pro features!

**[Learn more, Memberships starting at \\$2.50/m!](#)**

**Follow me  
on Twitter!**

@ConvertingColor