

Converting Colors

CIELCh(75, 32.493, 5.401)

Have a look what the booklet for
CIELCh(75, 32.493, 5.401) contains.

CIELCh(75, 32.536, 5.471)	3
<i>Conversions</i>	4
<i>Details</i>	6
<i>Harmonies</i>	11
<i>Previews</i>	20
<i>Color Blindness Simulation</i>	23
<i>CSS Examples</i>	26

Color

CIELCh(75, 32.536, 5.471)

Conversions

Conversions Part 1

Format	Color
Hex	F3A2B4
RGB	243, 162, 180
RGB Percent	95%, 64%, 71%
CMY	0.0464, 0.3641, 0.2935
CMYK	0.00, 0.33, 0.26, 0.05
HSL	347°, 77%, 79%
HSV	347°, 33%, 95%
XYZ	58.2181, 48.2781, 49.5100
YIQ	188.2710, 42.4980, 22.7700

Conversions

Conversions Part 2

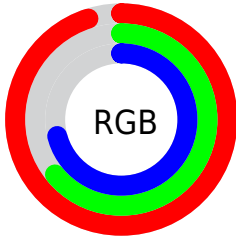
Format	Color
R _Y B	243, 162, 180
Decimal	15966900
CIE Lab	75.00, 32.39, 3.10
CIE LCh	75, 32.536, 5.471
Yxy	48.2781, 0.3732, 0.3095
Android (android.graphics.Color)	4294156980 (0xFFFF3A2B4)
YUV	188.2710, -4.0776, 47.9973
Hunter-Lab	69.4824, 27.9676, 6.3904

Details

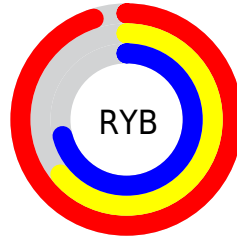
The CIELCh color $75, 32.536, 5.471$ is a light color, and the websafe version is hex `FF9999`. A complement of this color would be $90, 28.523, 178.349$, and the grayscale version is $76, 0.009, 296.813$.

A 20% lighter version of the original color is $91, 16.241, 345.629$, and $55, 32.561, 5.570$ is the 20% darker color. If you saturate the color by 10%, you get $69, 42.907, 7.218$, and if you desaturate by 10%, it is $81, 22.319, 4.045$.

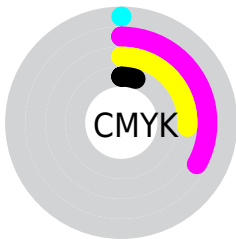
Distribution



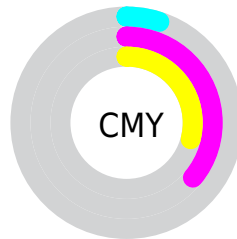
- Red (95%)
- Green (64%)
- Blue (71%)



- Red (95%)
- Yellow (64%)
- Blue (71%)



- Cyan (0%)
- Magenta (33%)
- Yellow (26%)
- Black (5%)



- Cyan (5%)
- Magenta (36%)
- Yellow (29%)

Brightness & Saturation Gradients

These gradients show how the CIELCh color 75, 32.536, 5.471 changes by changing the brightness by 10 percent. The first figure shows a shift by +10% for each color and the second figure -10%.

Similar to the brightness gradients but the following saturation gradients show a change of the CIELCh color 75, 32.536, 5.471 by changing the saturation by 10% instead.

 75, 32.536, 5.471

 75, 32.536, 5.471

 100, 32.536, 5.471

 65, 32.536, 5.471

 95, 32.536, 5.471

 55, 32.536, 5.471

 45, 32.536, 5.471

 35, 32.536, 5.471

 25, 32.536, 5.471

 15, 32.536, 5.471

 5, 32.536, 5.471

 0, 32.536, 5.471

 75, 32.536, 5.471

 75, 32.536, 5.471

69, 42.907, 7.218

81, 22.319, 4.045

64, 53.147, 9.390

87, 12.450, 2.840

60, 62.858, 12.136

94, 3.024, 1.688

56, 71.617, 15.620

99, 4.086, 199.308

53, 79.126, 19.968

52, 85.379, 25.145

51, 89.138, 28.789

Harmonies

Complementary

The Complementary color scheme is a pair of colors which are on the opposite of each other on the color wheel.



75, 32.536, 5.471



90, 28.523, 178.349

Rectangle

The Rectangle color scheme consists of four colors that form a rectangle on the color wheel.



75, 32.536, 5.471



75, 32.536, 55.471



75, 32.536, 185.471



75, 32.536, 235.471

Sweetspot

The Sweet Spot groups the original color and five complimentary colors.



75, 32.533, 5.474



93, 9.639, 2.476



75, 48.361, 319.261



49, 6.600, 2.631



0, 0.000, 0.000



53, 0.007, 296.813

Same Dimension

The Same Dimension uses a secret algorithm to generate beautiful new colors.



75, 32.533, 5.474



74, 41.023, 6.617



80, 26.833, 46.066



48, 5.293, 2.417



39, 72.341, 27.776



9, 29.914, 15.645

Inverse Universe

The Inverse Universe completely reimagines the original color for something new.



75, 32.533, 5.474



74, 41.023, 6.617



85, 21.560, 230.363



48, 5.293, 2.417



39, 72.341, 27.776



9, 29.914, 15.645

Previews

White Background



This preview shows how the CIELCh color 75, 32.536, 5.471 looks on a white background.

Color Contrast Check

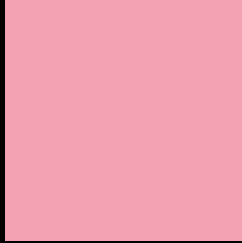
Large Text (above 18pt) WCAG AA × Fail

Any Text WCAG AA × Fail

Large Text (above 18pt) WCAG AAA × Fail

Any Text WCAG AAA × Fail

Black Background



This preview shows how the CIELCh color 75, 32.536, 5.471 looks on a black background.

Color Contrast Check

Large Text (above 18pt) WCAG AA ✓ Pass

Any Text WCAG AA ✓ Pass

Large Text (above 18pt) WCAG AAA ✓ Pass

Any Text WCAG AAA ✓ Pass

If you want to check with other color combinations, try the [Color Contrast Checker](#).

CIELCh 75, 32.536, 5.471

Background



This preview shows how black text looks on a background with the CIELCh color 75, 32.536, 5.471.

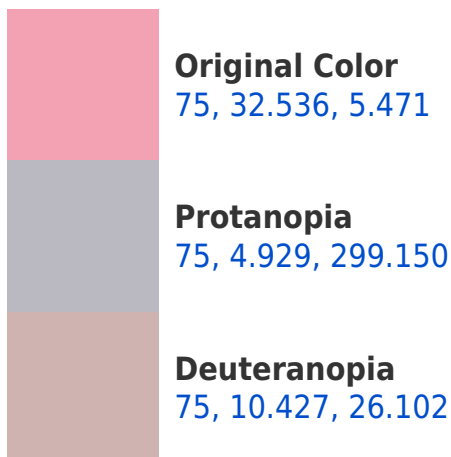


This preview shows how white text looks on a background with the CIELCh color 75, 32.536, 5.471.

Color Blindness Simulation

Color vision deficiency is a very complex topic, and I could not describe the different causes any better than Wikipedia does, so if you want to learn more, you should check out their [article about color blindness](#).

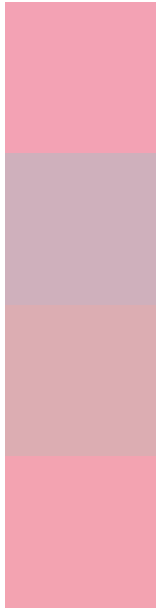
Dichromacy





Tritanopia
75, 31.753, 10.868

Trichromacy



Original Color
75, 32.536, 5.471

Protanomaly
75, 13.326, 351.597

Deuteranomaly
75, 18.328, 12.637

Tritanomaly
75, 31.841, 8.963

Monochromacy



Original Color
75, 32.536, 5.471

Achromatopsia
76, 0.009, 296.813

Achromatomaly
76, 11.439, 4.037

CSS Examples

Text

The CSS property to change the color of the text to CIELCh 75, 32.536, 5.471 is called "color". The color property can be set on classes, ids or directly on the HTML element.

This example shows how text in the color `rgb(243, 162, 180)` looks like.

```
.text, #text, p{  
    color:rgb(243, 162, 180)  
}
```

If you want to add a text shadow in that color use the text-shadow property, you can generate a text shadow directly with our [CSS Text Shadow Generator](#).

Here you see how black text with a 4 pixel rgb(243, 162, 180) colored shadow looks like.

```
.shadow{ text-shadow: 4px 4px 2px rgb(243, 162, 180) }
```

Border

The CSS property to change the border of an element to CIELCh 75, 32.536, 5.471 is called "border". The border property can be set on classes, ids or directly on the HTML element.

This example shows the color as border, it can be applied via the CSS property "border" or "border-color".

```
.border, #border, table{ border:4px solid rgb(243, 162, 180) }
```

If only the border color should be changed use the property border-color.

```
.border{ border-color:rgb(243, 162, 180) }
```

If you want to add a box shadow in that color use:

Here you see how a box with a 4 pixel rgb(243, 162, 180) colored shadow looks like.

```
.boxshadow{ -moz-box-shadow:4px 4px 4px  
4px rgb(243, 162, 180); -webkit-box-  
shadow:4px 4px 4px 4px rgb(243, 162, 180);  
box-shadow:4px 4px 4px 4px rgb(243, 162,  
180) }
```

Background

The CSS property to change the background color of an element to CIELCh 75, 32.536, 5.471 is called "background". The background property can be set on classes, ids or directly on the HTML element.

```
.background, #background, body{  
background: rgb(243, 162, 180) }
```

If only the background color should be changed can be used:

```
.background{ background-color: rgb(243,  
162, 180) }
```

This example shows the color as background, it is applied via the CSS property "background".

To optimize and compress your CSS code, you can use our [online CSS compressor and optimizer](#) based on csstidy. If you want to create a linear or radial gradient as background or border, check our [CSS Gradient Generator](#).

Hey! You found this booklet interesting? Support Converting Colors with the new Membership Option!

The pro membership hides all ads, plus gives you double the colors in the color bucket, and more awesome pro features!

[Learn more, Memberships starting at \\$2.50/m!](#)

**Follow me
on Twitter!**

@ConvertingColor