

Converting Colors

CIELCh(75, 33.634, 3.321)

Have a look what the booklet for
CIELCh(75, 33.634, 3.321) contains.

CIELCh(75, 33.602, 3.301)	3
<i>Conversions</i>	4
<i>Details</i>	6
<i>Harmonies</i>	11
<i>Previews</i>	20
<i>Color Blindness Simulation</i>	23
<i>CSS Examples</i>	26

Color

CIELCh(75, 33.602, 3.301)

Conversions

Conversions Part 1

Format	Color
Hex	F4A1B6
RGB	244, 161, 182
RGB Percent	96%, 63%, 71%
CMY	0.0418, 0.3674, 0.2851
CMYK	0.00, 0.34, 0.25, 0.04
HSL	345°, 80%, 80%
HSV	345°, 34%, 96%
XYZ	58.6959, 48.2781, 50.6458
YIQ	188.2110, 42.7270, 24.1270

Conversions

Conversions Part 2

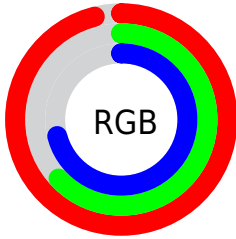
Format	Color
RYP	244, 161, 182
Decimal	16032182
CIELab	75.00, 33.55, 1.93
CIELCh	75, 33.602, 3.301
Yxy	48.2781, 0.3724, 0.3063
Android (android.graphics.Color)	4294222262 (0xFFFF4A1B6)
YUV	188.2110, -3.0620, 48.9270
Hunter-Lab	69.4824, 29.1951, 5.4212

Details

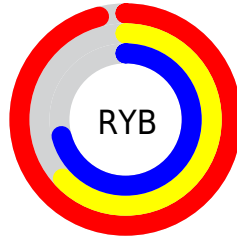
The CIELCh color **75, 33.602, 3.301** is a light color, and the websafe version is hex **FF9999**. A complement of this color would be **91, 29.765, 175.929**, and the grayscale version is **76, 0.009, 296.813**.

A 20% lighter version of the original color is **90, 17.432, 342.119**, and **55, 33.644, 3.325** is the 20% darker color. If you saturate the color by 10%, you get **69, 43.978, 5.046**, and if you desaturate by 10%, it is **81, 23.304, 1.869**.

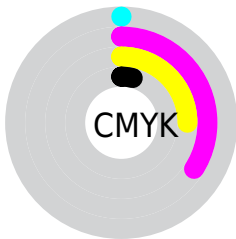
Distribution



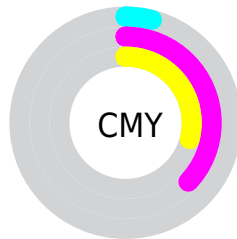
- Red (96%)
- Green (63%)
- Blue (71%)



- Red (96%)
- Yellow (63%)
- Blue (71%)



- Cyan (0%)
- Magenta (34%)
- Yellow (25%)
- Black (4%)



- Cyan (4%)
- Magenta (37%)
- Yellow (29%)

Brightness & Saturation Gradients

These gradients show how the CIELCh color 75, 33.602, 3.301 changes by changing the brightness by 10 percent. The first figure shows a shift by +10% for each color and the second figure -10%.

Similar to the brightness gradients but the following saturation gradients show a change of the CIELCh color 75, 33.602, 3.301 by changing the saturation by 10% instead.

 75, 33.602, 3.301  75, 33.602, 3.301

 100, 33.602, 3.301  65, 33.602, 3.301

 95, 33.602, 3.301  55, 33.602, 3.301

 45, 33.602, 3.301

 35, 33.602, 3.301

 25, 33.602, 3.301

 15, 33.602, 3.301

 5, 33.602, 3.301

 0, 33.602, 3.301

 75, 33.602, 3.301  75, 33.602, 3.301

69, 43.978, 5.046

81, 23.304, 1.869

64, 54.122, 7.209

87, 13.300, 0.655

60, 63.612, 9.939

94, 3.700, 359.522

56, 72.007, 13.403

99, 3.686, 199.351

54, 79.012, 17.747

52, 84.669, 22.971

51, 87.734, 26.317

Harmonies

Complementary

The Complementary color scheme is a pair of colors which are on the opposite of each other on the color wheel.



75, 33.602, 3.301



91, 29.765, 175.929

Rectangle

The Rectangle color scheme consists of four colors that form a rectangle on the color wheel.



75, 33.602, 3.301



75, 33.602, 53.301



75, 33.602, 183.301



75, 33.602, 233.301

Sweetspot

The Sweet Spot groups the original color and five complimentary colors.



75, 33.599, 3.304



93, 9.761, 0.215



75, 49.186, 318.250



49, 6.681, 0.370



0, 0.000, 0.000



53, 0.007, 296.813

Same Dimension

The Same Dimension uses a secret algorithm to generate beautiful new colors.



75, 33.599, 3.304



74, 42.339, 4.506



79, 27.967, 42.612



48, 5.360, 0.156



39, 70.998, 25.263



9, 29.807, 14.019

Inverse Universe

The Inverse Universe completely reimagines the original color for something new.



75, 33.599, 3.304



74, 42.339, 4.506



86, 22.126, 225.783



48, 5.360, 0.156



39, 70.998, 25.263



9, 29.807, 14.019

Previews

White Background



This preview shows how the CIELCh color 75, 33.602, 3.301 looks on a white background.

Color Contrast Check

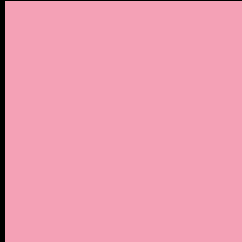
Large Text (above 18pt) WCAG AA × Fail

Any Text WCAG AA × Fail

Large Text (above 18pt) WCAG AAA × Fail

Any Text WCAG AAA × Fail

Black Background



This preview shows how the CIELCh color 75, 33.602, 3.301 looks on a black background.

Color Contrast Check

Large Text (above 18pt) WCAG AA ✓ Pass

Any Text WCAG AA ✓ Pass

Large Text (above 18pt) WCAG AAA ✓ Pass

Any Text WCAG AAA ✓ Pass

If you want to check with other color combinations, try the [Color Contrast Checker](#).

CIELCh 75, 33.602, 3.301

Background



This preview shows how black text looks on a background with the CIELCh color 75, 33.602, 3.301.

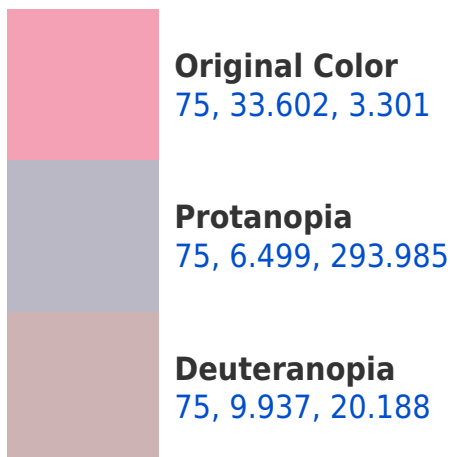


This preview shows how white text looks on a background with the CIELCh color 75, 33.602, 3.301.

Color Blindness Simulation

Color vision deficiency is a very complex topic, and I could not describe the different causes any better than Wikipedia does, so if you want to learn more, you should check out their [article about color blindness](#).

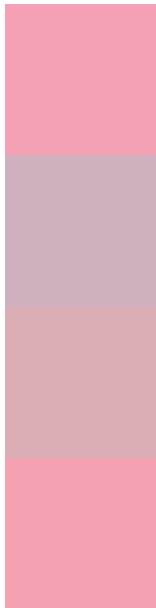
Dichromacy





Tritanopia
75, 32.141, 11.053

Trichromacy



Original Color
75, 33.602, 3.301

Protanomaly
75, 14.133, 345.804

Deuteranomaly
75, 18.051, 9.038

Tritanomaly
75, 32.757, 7.549

Monochromacy



Original Color
75, 33.602, 3.301

Achromatopsia
77, 0.009, 296.813

Achromatomaly
76, 12.106, 359.688

CSS Examples

Text

The CSS property to change the color of the text to CIELCh 75, 33.602, 3.301 is called "color". The color property can be set on classes, ids or directly on the HTML element.

This example shows how text in the color `rgb(244, 161, 182)` looks like.

```
.text, #text, p{  
    color:rgb(244, 161, 182)  
}
```

If you want to add a text shadow in that color use the text-shadow property, you can generate a text shadow directly with our [CSS Text Shadow Generator](#).

Here you see how black text with a 4 pixel rgb(244, 161, 182) colored shadow looks like.

```
.shadow{ text-shadow: 4px 4px 2px rgb(244, 161, 182) }
```

Border

The CSS property to change the border of an element to CIELCh 75, 33.602, 3.301 is called "border". The border property can be set on classes, ids or directly on the HTML element.

This example shows the color as border, it can be applied via the CSS property "border" or "border-color".

```
.border, #border, table{ border:4px solid rgb(244, 161, 182) }
```

If only the border color should be changed use the property `border-color`.

```
.border{ border-color:rgb(244, 161, 182) }
```

If you want to add a box shadow in that color use:

Here you see how a box with a 4 pixel `rgb(244, 161, 182)` colored shadow looks like.

```
.boxshadow{ -moz-box-shadow:4px 4px 4px  
4px rgb(244, 161, 182); -webkit-box-  
shadow:4px 4px 4px 4px rgb(244, 161, 182);  
box-shadow:4px 4px 4px 4px rgb(244, 161,  
182) }
```

Background

The CSS property to change the background color of an element to CIELCh 75, 33.602, 3.301 is called "background". The background property can be set on classes, ids or directly on the HTML element.

```
.background, #background, body{  
background: rgb(244, 161, 182) }
```

If only the background color should be changed can be used:

```
.background{ background-color: rgb(244,  
161, 182) }
```

This example shows the color as background, it is applied via the CSS property "background".

To optimize and compress your CSS code, you can use our [online CSS compressor and optimizer](#) based on csstidy. If you want to create a linear or radial gradient as background or border, check our [CSS Gradient Generator](#).

Hey! You found this booklet interesting? Support Converting Colors with the new Membership Option!

The pro membership hides all ads, plus gives you double the colors in the color bucket, and more awesome pro features!

[Learn more, Memberships starting at \\$2.50/m!](#)

**Follow me
on Twitter!**

@ConvertingColor