

Converting Colors

CIELCh(75, 35.564, 10.804)

Have a look what the booklet for
CIELCh(75, 35.564, 10.804) contains.

CIELCh(75, 35.412, 10.772)	3
<i>Conversions</i>	4
<i>Details</i>	6
<i>Harmonies</i>	11
<i>Previews</i>	20
<i>Color Blindness Simulation</i>	23
<i>CSS Examples</i>	26

Color

CIELCh(75, 35.412, 10.772)

Conversions

Conversions Part 1

Format	Color
Hex	F9A0AE
RGB	249, 160, 174
RGB Percent	98%, 63%, 68%
CMY	0.0240, 0.3729, 0.3180
CMYK	0.00, 0.36, 0.30, 0.02
HSL	351°, 88%, 80%
HSV	351°, 36%, 98%
XYZ	59.2109, 48.2781, 46.1909
YIQ	188.2070, 48.5500, 23.2220

Conversions

Conversions Part 2

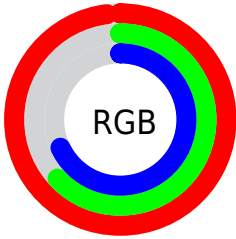
Format	Color
R _Y B	249, 160, 174
Decimal	16359598
CIE Lab	75.00, 34.79, 6.62
CIE LCh	75, 35.412, 10.772
Yxy	48.2781, 0.3853, 0.3141
Android (android.graphics.Color)	4294549678 (0xFFFF9A0AE)
YUV	188.2070, -7.0041, 53.3155
Hunter-Lab	69.4824, 30.5182, 9.2226

Details

The CIELCh color **75, 35.412, 10.772** is a light color, and the websafe version is hex **FF9999**. A complement of this color would be **92, 29.760, 183.353**, and the grayscale version is **76, 0.009, 296.813**.

A 20% lighter version of the original color is **90, 15.672, 355.171**, and **55, 35.666, 10.518** is the 20% darker color. If you saturate the color by 10%, you get **69, 46.159, 12.639**, and if you desaturate by 10%, it is **81, 24.901, 9.277**.

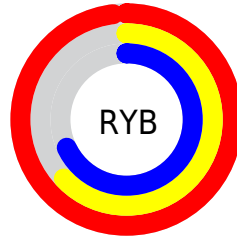
Distribution



Red (98%)

Green (63%)

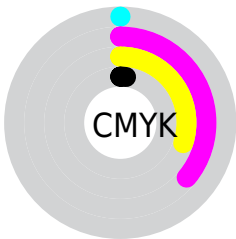
Blue (68%)



Red (98%)

Yellow (63%)

Blue (68%)

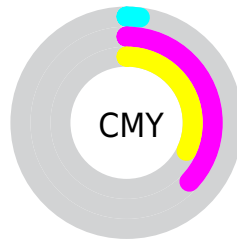


Cyan (0%)

Magenta (36%)

Yellow (30%)

Black (2%)



Cyan (2%)

Magenta (37%)

Yellow (32%)

Brightness & Saturation Gradients

These gradients show how the CIELCh color 75, 35.412, 10.772 changes by changing the brightness by 10 percent. The first figure shows a shift by +10% for each color and the second figure -10%.

Similar to the brightness gradients but the following saturation gradients show a change of the CIELCh color 75, 35.412, 10.772 by changing the saturation by 10% instead.

 75, 35.412, 10.772  75, 35.412, 10.772

 100, 35.412,
10.772  65, 35.412, 10.772

 95, 35.412, 10.772  55, 35.412, 10.772

 45, 35.412, 10.772

 35, 35.412, 10.772

 25, 35.412, 10.772

 15, 35.412, 10.772

 5, 35.412, 10.772

 0, 35.412, 10.772

 75, 35.412, 10.772  75, 35.412, 10.772

69, 46.159, 12.639

81, 24.901, 9.277

64, 56.856, 14.995

87, 14.819, 8.044

60, 67.118, 17.990

94, 5.256, 6.957

56, 76.553, 21.759

100, 2.119,
199.583

54, 84.900, 26.325

52, 92.061, 31.419

52, 94.833, 33.475

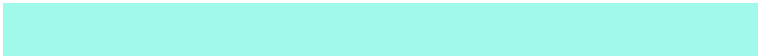
Harmonies

Complementary

The Complementary color scheme is a pair of colors which are on the opposite of each other on the color wheel.



75, 35.412, 10.772



92, 29.760, 183.353

Rectangle

The Rectangle color scheme consists of four colors that form a rectangle on the color wheel.



75, 35.412, 10.772



75, 35.412, 60.772



75, 35.412, 190.772



75, 35.412, 240.772

Sweetspot

The Sweet Spot groups the original color and five complimentary colors.



75, 35.409, 10.775



93, 10.410, 7.524



76, 53.633, 321.420



48, 7.022, 7.670



0, 0.000, 0.000



53, 0.007, 296.813

Same Dimension

The Same Dimension uses a secret algorithm to generate beautiful new colors.



75, 35.409, 10.775



72, 44.053, 12.094



81, 29.076, 53.075



49, 5.269, 7.362



39, 76.298, 32.555



9, 31.203, 19.690

Inverse Universe

The Inverse Universe completely reimagines the original color for something new.



75, 35.409, 10.775



72, 44.053, 12.094



85, 23.636, 240.140



49, 5.269, 7.362



39, 76.298, 32.555



9, 31.203, 19.690

Previews

White Background



This preview shows how the CIELCh color 75, 35.412, 10.772 looks on a white background.

Color Contrast Check

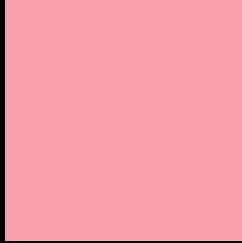
Large Text (above 18pt) WCAG AA × Fail

Any Text WCAG AA × Fail

Large Text (above 18pt) WCAG AAA × Fail

Any Text WCAG AAA × Fail

Black Background



This preview shows how the CIELCh color 75, 35.412, 10.772 looks on a black background.

Color Contrast Check

Large Text (above 18pt) WCAG AA ✓ Pass

Any Text WCAG AA ✓ Pass

Large Text (above 18pt) WCAG AAA ✓ Pass

Any Text WCAG AAA ✓ Pass

If you want to check with other color combinations, try the [Color Contrast Checker](#).

CIELCh 75, 35.412, 10.772

Background



This preview shows how black text looks on a background with the CIELCh color 75, 35.412, 10.772.

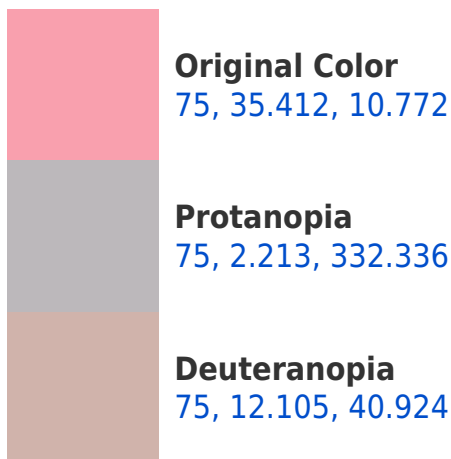


This preview shows how white text looks on a background with the CIELCh color 75, 35.412, 10.772.

Color Blindness Simulation

Color vision deficiency is a very complex topic, and I could not describe the different causes any better than Wikipedia does, so if you want to learn more, you should check out their [article about color blindness](#).

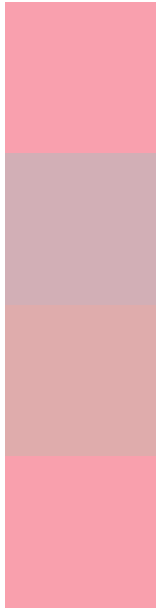
Dichromacy





Tritanopia
75, 35.369, 12.487

Trichromacy



Original Color
75, 35.412, 10.772

Protanomaly
75, 13.846, 4.866

Deuteranomaly
75, 19.974, 21.121

Tritanomaly
75, 35.386, 11.629

Monochromacy



Original Color
75, 35.412, 10.772

Achromatopsia
76, 0.009, 296.813

Achromatomaly
75, 12.462, 8.048

CSS Examples

Text

The CSS property to change the color of the text to CIELCh 75, 35.412, 10.772 is called "color". The color property can be set on classes, ids or directly on the HTML element.

This example shows how text in the color `rgb(249, 160, 174)` looks like.

```
.text, #text, p{  
    color:rgb(249, 160, 174)  
}
```

If you want to add a text shadow in that color use the text-shadow property, you can generate a text shadow directly with our [CSS Text Shadow Generator](#).

Here you see how black text with a 4 pixel rgb(249, 160, 174) colored shadow looks like.

```
.shadow{ text-shadow: 4px 4px 2px rgb(249, 160, 174) }
```

Border

The CSS property to change the border of an element to CIELCh 75, 35.412, 10.772 is called "border". The border property can be set on classes, ids or directly on the HTML element.

This example shows the color as border, it can be applied via the CSS property "border" or "border-color".

```
.border, #border, table{ border:4px solid rgb(249, 160, 174) }
```

If only the border color should be changed use the property `border-color`.

```
.border{ border-color:rgb(249, 160, 174) }
```

If you want to add a box shadow in that color use:

Here you see how a box with a 4 pixel `rgb(249, 160, 174)` colored shadow looks like.

```
.boxshadow{ -moz-box-shadow:4px 4px 4px  
4px rgb(249, 160, 174); -webkit-box-  
shadow:4px 4px 4px 4px rgb(249, 160, 174);  
box-shadow:4px 4px 4px 4px rgb(249, 160,  
174) }
```

Background

The CSS property to change the background color of an element to CIELCh 75, 35.412, 10.772 is called "background". The background property can be set on classes, ids or directly on the HTML element.

```
.background, #background, body{  
background: rgb(249, 160, 174) }
```

If only the background color should be changed can be used:

```
.background{ background-color: rgb(249,  
160, 174) }
```

This example shows the color as background, it is applied via the CSS property "background".

To optimize and compress your CSS code, you can use our [online CSS compressor and optimizer](#) based on csstidy. If you want to create a linear or radial gradient as background or border, check our [CSS Gradient Generator](#).

Hey! You found this booklet interesting? Support Converting Colors with the new Membership Option!

The pro membership hides all ads, plus gives you double the colors in the color bucket, and more awesome pro features!

[Learn more, Memberships starting at \\$2.50/m!](#)

**Follow me
on Twitter!**

@ConvertingColor