

Converting Colors

CIELCh(75, 36.993, 4.998)

Have a look what the booklet for
CIELCh(75, 36.993, 4.998) contains.

CIELCh(75, 37.099, 4.785)	3
<i>Conversions</i>	4
<i>Details</i>	6
<i>Harmonies</i>	11
<i>Previews</i>	20
<i>Color Blindness Simulation</i>	23
<i>CSS Examples</i>	26

Color

CIELCh(75, 37.099, 4.785)

Conversions

Conversions Part 1

Format	Color
Hex	FA9EB4
RGB	250, 158, 180
RGB Percent	98%, 62%, 71%
CMY	0.0181, 0.3790, 0.2927
CMYK	0.00, 0.37, 0.28, 0.02
HSL	346°, 91%, 80%
HSV	346°, 37%, 98%
XYZ	60.1231, 48.2781, 49.5171
YIQ	188.0160, 47.7700, 26.3460

Conversions

Conversions Part 2

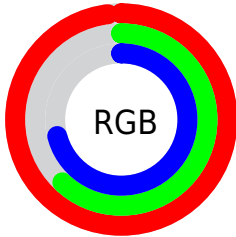
Format	Color
R _Y B	250, 158, 180
Decimal	16424628
CIE Lab	75.00, 36.97, 3.09
CIE LCh	75, 37.099, 4.785
Yxy	48.2781, 0.3807, 0.3057
Android (android.graphics.Color)	4294614708 (0xFFFA9EB4)
YUV	188.0160, -3.9519, 54.3600
Hunter-Lab	69.4824, 32.8615, 6.3844

Details

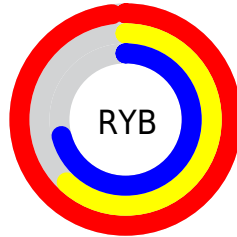
The CIELCh color $75, 37.099, 4.785$ is a light color, and the websafe version is hex `FF9999`. A complement of this color would be $92, 32.299, 176.659$, and the grayscale version is $76, 0.009, 296.813$.

A 20% lighter version of the original color is $90, 18.627, 343.059$, and $55, 37.273, 5.179$ is the 20% darker color. If you saturate the color by 10%, you get $69, 47.677, 6.654$, and if you desaturate by 10%, it is $81, 26.551, 3.265$.

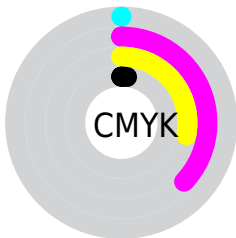
Distribution



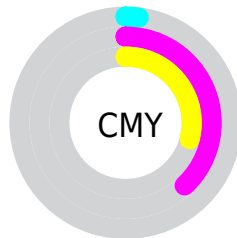
- Red (98%)
- Green (62%)
- Blue (71%)



- Red (98%)
- Yellow (62%)
- Blue (71%)



- Cyan (0%)
- Magenta (37%)
- Yellow (28%)
- Black (2%)



- Cyan (2%)
- Magenta (38%)
- Yellow (29%)

Brightness & Saturation Gradients

These gradients show how the CIELCh color 75, 37.099, 4.785 changes by changing the brightness by 10 percent. The first figure shows a shift by +10% for each color and the second figure -10%.

Similar to the brightness gradients but the following saturation gradients show a change of the CIELCh color 75, 37.099, 4.785 by changing the saturation by 10% instead.

 75, 37.099, 4.785

 75, 37.099, 4.785

 100, 37.099, 4.785

 65, 37.099, 4.785

 95, 37.099, 4.785

 55, 37.099, 4.785

 45, 37.099, 4.785

 35, 37.099, 4.785

 25, 37.099, 4.785

 15, 37.099, 4.785

 5, 37.099, 4.785

 0, 37.099, 4.785

 75, 37.099, 4.785

 75, 37.099, 4.785

69, 47.677, 6.654

81, 26.551, 3.265

64, 57.941, 8.989

87, 16.277, 1.992

60, 67.452, 11.948

94, 6.408, 0.870

57, 75.787, 15.696

100, 1.602,
199.717

54, 82.730, 20.341

53, 88.432, 25.774

53, 90.215, 27.544

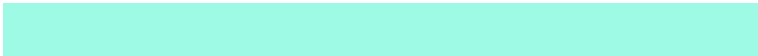
Harmonies

Complementary

The Complementary color scheme is a pair of colors which are on the opposite of each other on the color wheel.



75, 37.099, 4.785



92, 32.299, 176.659

Rectangle

The Rectangle color scheme consists of four colors that form a rectangle on the color wheel.



75, 37.099, 4.785



75, 37.099, 54.785



75, 37.099, 184.785



75, 37.099, 234.785

Sweetspot

The Sweet Spot groups the original color and five complimentary colors.



75, 37.096, 4.788



93, 10.700, 1.340



75, 54.461, 318.889



48, 7.213, 1.490



0, 0.000, 0.000



53, 0.007, 296.813

Same Dimension

The Same Dimension uses a secret algorithm to generate beautiful new colors.



75, 37.096, 4.788



72, 45.446, 6.108



80, 30.973, 44.291



49, 5.420, 1.173



40, 72.349, 26.476



9, 30.808, 15.752

Inverse Universe

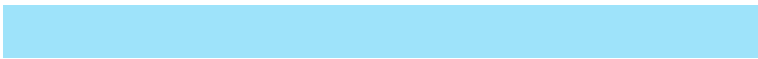
The Inverse Universe completely reimagines the original color for something new.



75, 37.096, 4.788



72, 45.446, 6.108



87, 24.079, 228.464



49, 5.420, 1.173



40, 72.349, 26.476



9, 30.808, 15.752

Previews

White Background



This preview shows how the CIELCh color 75, 37.099, 4.785 looks on a white background.

Color Contrast Check

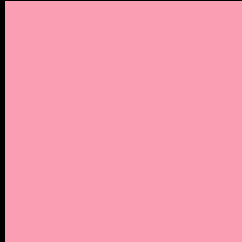
Large Text (above 18pt) WCAG AA × Fail

Any Text WCAG AA × Fail

Large Text (above 18pt) WCAG AAA × Fail

Any Text WCAG AAA × Fail

Black Background



This preview shows how the CIELCh color 75, 37.099, 4.785 looks on a black background.

Color Contrast Check

Large Text (above 18pt) WCAG AA ✓ Pass

Any Text WCAG AA ✓ Pass

Large Text (above 18pt) WCAG AAA ✓ Pass

Any Text WCAG AAA ✓ Pass

If you want to check with other color combinations, try the [Color Contrast Checker](#).

CIELCh 75, 37.099, 4.785

Background



This preview shows how black text looks on a background with the CIELCh color 75, 37.099, 4.785.

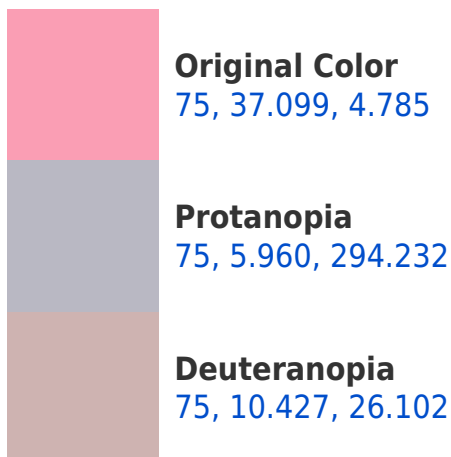


This preview shows how white text looks on a background with the CIELCh color 75, 37.099, 4.785.

Color Blindness Simulation

Color vision deficiency is a very complex topic, and I could not describe the different causes any better than Wikipedia does, so if you want to learn more, you should check out their [article about color blindness](#).

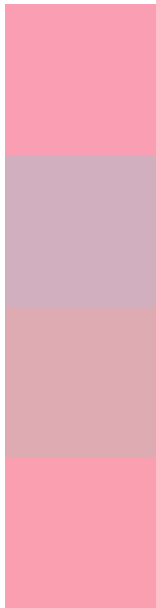
Dichromacy





Tritanopia
75, 35.760, 12.645

Trichromacy



Original Color
75, 37.099, 4.785

Protanomaly
75, 15.088, 348.405

Deuteranomaly
75, 20.024, 10.436

Tritanomaly
75, 36.291, 9.474

Monochromacy



Original Color
75, 37.099, 4.785

Achromatopsia
76, 0.009, 296.813

Achromatomaly
75, 13.580, 2.171

CSS Examples

Text

The CSS property to change the color of the text to CIELCh 75, 37.099, 4.785 is called "color". The color property can be set on classes, ids or directly on the HTML element.

This example shows how text in the color `rgb(250, 158, 180)` looks like.

```
.text, #text, p{  
    color:rgb(250, 158, 180)  
}
```

If you want to add a text shadow in that color use the text-shadow property, you can generate a text shadow directly with our [CSS Text Shadow Generator](#).

Here you see how black text with a 4 pixel rgb(250, 158, 180) colored shadow looks like.

```
.shadow{ text-shadow: 4px 4px 2px rgb(250, 158, 180) }
```

Border

The CSS property to change the border of an element to CIELCh 75, 37.099, 4.785 is called "border". The border property can be set on classes, ids or directly on the HTML element.

This example shows the color as border, it can be applied via the CSS property "border" or "border-color".

```
.border, #border, table{ border:4px solid rgb(250, 158, 180) }
```

If only the border color should be changed use the property `border-color`.

```
.border{ border-color:rgb(250, 158, 180) }
```

If you want to add a box shadow in that color use:

Here you see how a box with a 4 pixel `rgb(250, 158, 180)` colored shadow looks like.

```
.boxshadow{ -moz-box-shadow:4px 4px 4px  
4px rgb(250, 158, 180); -webkit-box-  
shadow:4px 4px 4px 4px rgb(250, 158, 180);  
box-shadow:4px 4px 4px 4px rgb(250, 158,  
180) }
```

Background

The CSS property to change the background color of an element to CIELCh 75, 37.099, 4.785 is called "background". The background property can be set on classes, ids or directly on the HTML element.

```
.background, #background, body{  
background: rgb(250, 158, 180) }
```

If only the background color should be changed can be used:

```
.background{ background-color: rgb(250,  
158, 180) }
```

This example shows the color as background, it is applied via the CSS property "background".

To optimize and compress your CSS code, you can use our [online CSS compressor and optimizer](#) based on csstidy. If you want to create a linear or radial gradient as background or border, check our [CSS Gradient Generator](#).

Hey! You found this booklet interesting? Support Converting Colors with the new Membership Option!

The pro membership hides all ads, plus gives you double the colors in the color bucket, and more awesome pro features!

[Learn more, Memberships starting at \\$2.50/m!](#)

**Follow me
on Twitter!**

@ConvertingColor