

Converting Colors

CIELCh(75, 38.664, 8.913)

Have a look what the booklet for
CIELCh(75, 38.664, 8.913) contains.

CIELCh(75, 38.740, 9.049)	3
<i>Conversions</i>	4
<i>Details</i>	6
<i>Harmonies</i>	11
<i>Previews</i>	20
<i>Color Blindness Simulation</i>	23
<i>CSS Examples</i>	26

Color

CIELCh(75, 38.740, 9.049)

Conversions

Conversions Part 1

Format	Color
Hex	FE9DAF
RGB	254, 157, 175
RGB Percent	100%, 62%, 69%
CMY	0.0039, 0.3843, 0.3137
CMYK	0.00, 0.38, 0.31, 0.00
HSL	349°, 98%, 81%
HSV	349°, 38%, 100%
XYZ	60.6660, 48.2781, 46.6772
YIQ	188.0550, 52.0340, 26.1620

Conversions

Conversions Part 2

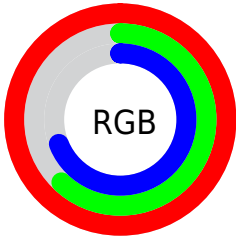
Format	Color
R_{YB}	254, 157, 175
Decimal	16686511
CIE _{Lab}	75.00, 38.26, 6.09
CIE _{LCh}	75, 38.740, 9.049
Yxy	48.2781, 0.3898, 0.3102
Android (android.graphics.Color)	4294876591 (0xFFFE9DAF)
YUV	188.0550, -6.4361, 57.8338
Hunter-Lab	69.4824, 34.2564, 8.8076

Details

The CIELCh color **75, 38.740, 9.049** is a light color, and the websafe version is hex **FF9999**. A complement of this color would be **93, 32.618, 180.742**, and the grayscale version is **76, 0.009, 296.813**.

A 20% lighter version of the original color is **89, 17.578, 350.666**, and **55, 38.694, 8.773** is the 20% darker color. If you saturate the color by 10%, you get **69, 49.574, 11.022**, and if you desaturate by 10%, it is **81, 28.014, 7.467**.

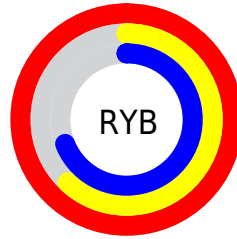
Distribution



Red (100%)

Green (62%)

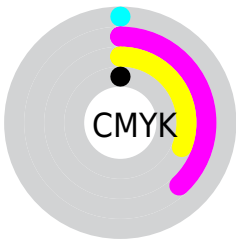
Blue (69%)



Red (100%)

Yellow (62%)

Blue (69%)

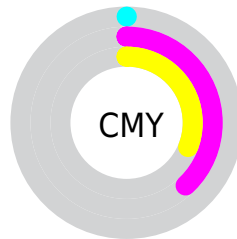


Cyan (0%)

Magenta (38%)

Yellow (31%)

Black (0%)



Cyan (0%)

Magenta (38%)

Yellow (31%)

Brightness & Saturation Gradients

These gradients show how the CIELCh color 75, 38.740, 9.049 changes by changing the brightness by 10 percent. The first figure shows a shift by +10% for each color and the second figure -10%.

Similar to the brightness gradients but the following saturation gradients show a change of the CIELCh color 75, 38.740, 9.049 by changing the saturation by 10% instead.

 75, 38.740, 9.049  75, 38.740, 9.049

 100, 38.740, 9.049  65, 38.740, 9.049

 95, 38.740, 9.049  55, 38.740, 9.049

 45, 38.740, 9.049

 35, 38.740, 9.049

 25, 38.740, 9.049

 15, 38.740, 9.049

 5, 38.740, 9.049

 0, 38.740, 9.049

 75, 38.740, 9.049

 75, 38.740, 9.049

69, 49.574, 11.022

81, 28.014, 7.467

64, 60.184, 13.509

88, 17.635, 6.163

60, 70.148, 16.668

94, 7.727, 5.042

57, 79.082, 20.639

100, 0.348,
201.287

55, 86.797, 25.436

53, 93.383, 30.740

53, 94.540, 31.645

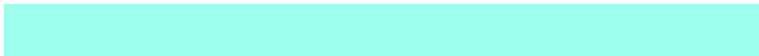
Harmonies

Complementary

The Complementary color scheme is a pair of colors which are on the opposite of each other on the color wheel.



75, 38.740, 9.049



93, 32.618, 180.742

Rectangle

The Rectangle color scheme consists of four colors that form a rectangle on the color wheel.



75, 38.740, 9.049



75, 38.740, 59.049



75, 38.740, 189.049



75, 38.740, 239.049

Sweetspot

The Sweet Spot groups the original color and five complimentary colors.



75, 38.737, 9.052



93, 10.496, 5.348



75, 57.791, 320.501



48, 7.079, 5.496



0, 0.000, 0.000



53, 0.007, 296.813

Same Dimension

The Same Dimension uses a secret algorithm to generate beautiful new colors.



75, 38.737, 9.052



71, 47.361, 10.554



81, 32.131, 49.411



50, 5.403, 5.185



40, 75.666, 30.660



10, 32.070, 19.441

Inverse Universe

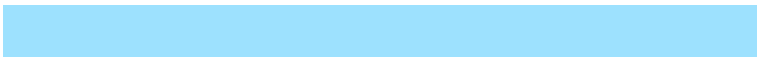
The Inverse Universe completely reimagines the original color for something new.



75, 38.737, 9.052



71, 47.361, 10.554



86, 25.225, 235.843



50, 5.403, 5.185



40, 75.666, 30.660



10, 32.070, 19.441

Previews

White Background



This preview shows how the CIELCh color 75, 38.740, 9.049 looks on a white background.

Color Contrast Check

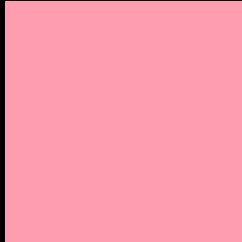
Large Text (above 18pt) WCAG AA × Fail

Any Text WCAG AA × Fail

Large Text (above 18pt) WCAG AAA × Fail

Any Text WCAG AAA × Fail

Black Background



This preview shows how the CIELCh color 75, 38.740, 9.049 looks on a black background.

Color Contrast Check

Large Text (above 18pt) WCAG AA ✓ Pass

Any Text WCAG AA ✓ Pass

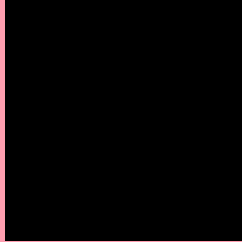
Large Text (above 18pt) WCAG AAA ✓ Pass

Any Text WCAG AAA ✓ Pass

If you want to check with other color combinations, try the [Color Contrast Checker](#).

CIELCh 75, 38.740, 9.049

Background



This preview shows how black text looks on a background with the CIELCh color 75, 38.740, 9.049.



This preview shows how white text looks on a background with the CIELCh color 75, 38.740, 9.049.

Color Blindness Simulation

Color vision deficiency is a very complex topic, and I could not describe the different causes any better than Wikipedia does, so if you want to learn more, you should check out their [article about color blindness](#).

Dichromacy



Original Color

75, 38.740, 9.049

Protanopia

75, 3.441, 309.172

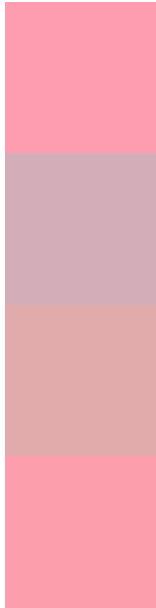
Deuteranopia

75, 12.105, 40.924



Tritanopia
75, 37.797, 13.447

Trichromacy



Original Color
75, 38.740, 9.049

Protanomaly
75, 15.203, 357.881

Deuteranomaly
75, 21.161, 19.805

Tritanomaly
75, 37.813, 11.841

Monochromacy



Original Color
75, 38.740, 9.049

Achromatopsia
76, 0.009, 296.813

Achromatomaly
75, 13.706, 7.023

CSS Examples

Text

The CSS property to change the color of the text to CIELCh 75, 38.740, 9.049 is called "color". The color property can be set on classes, ids or directly on the HTML element.

This example shows how text in the color `rgb(254, 157, 175)` looks like.

```
.text, #text, p{  
    color:rgb(254, 157, 175)  
}
```

If you want to add a text shadow in that color use the text-shadow property, you can generate a text shadow directly with our [CSS Text Shadow Generator](#).

Here you see how black text with a 4 pixel rgb(254, 157, 175) colored shadow looks like.

```
.shadow{ text-shadow: 4px 4px 2px rgb(254, 157, 175) }
```

Border

The CSS property to change the border of an element to CIELCh 75, 38.740, 9.049 is called "border". The border property can be set on classes, ids or directly on the HTML element.

This example shows the color as border, it can be applied via the CSS property "border" or "border-color".

```
.border, #border, table{ border:4px solid rgb(254, 157, 175) }
```

If only the border color should be changed use the property border-color.

```
.border{ border-color:rgb(254, 157, 175) }
```

If you want to add a box shadow in that color use:

Here you see how a box with a 4 pixel rgb(254, 157, 175) colored shadow looks like.

```
.boxshadow{ -moz-box-shadow:4px 4px 4px  
4px rgb(254, 157, 175); -webkit-box-  
shadow:4px 4px 4px 4px rgb(254, 157, 175);  
box-shadow:4px 4px 4px 4px rgb(254, 157,  
175) }
```

Background

The CSS property to change the background color of an element to CIELCh 75, 38.740, 9.049 is called "background". The background property can be set on classes, ids or directly on the HTML element.

```
.background, #background, body{  
background: rgb(254, 157, 175) }
```

If only the background color should be changed can be used:

```
.background{ background-color: rgb(254,  
157, 175) }
```

This example shows the color as background, it is applied via the CSS property "background".

To optimize and compress your CSS code, you can use our [online CSS compressor and optimizer](#) based on csstidy. If you want to create a linear or radial gradient as background or border, check our [CSS Gradient Generator](#).

Hey! You found this booklet interesting? Support Converting Colors with the new Membership Option!

The pro membership hides all ads, plus gives you double the colors in the color bucket, and more awesome pro features!

[Learn more, Memberships starting at \\$2.50/m!](#)

**Follow me
on Twitter!**

@ConvertingColor