

Converting Colors

CIELCh(75, 39.660, 11.433)

Have a look what the booklet for
CIELCh(75, 39.660, 11.433) contains.

CIELCh(75, 39.478, 10.982)	3
<i>Conversions</i>	4
<i>Details</i>	6
<i>Harmonies</i>	11
<i>Previews</i>	20
<i>Color Blindness Simulation</i>	23
<i>CSS Examples</i>	26

Color

CIELCh(75, 39.478, 10.982)

Conversions

Conversions Part 1

Format	Color
Hex	FF9CAC
RGB	255, 156, 172
RGB Percent	100%, 61%, 67%
CMY	0.0000, 0.3864, 0.3237
CMYK	0.00, 0.39, 0.32, 0.00
HSL	350°, 100%, 81%
HSV	350°, 39%, 100%
XYZ	60.8765, 48.2781, 45.3641
YIQ	187.4250, 53.8680, 25.9640

Conversions

Conversions Part 2

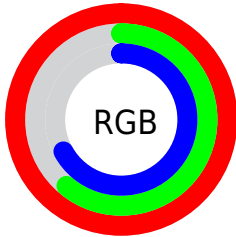
Format	Color
R_{YB}	255, 156, 172
Decimal	16751788
CIE _{Lab}	75.00, 38.76, 7.52
CIE _{LCh}	75, 39.478, 10.982
Yxy	48.2781, 0.3940, 0.3124
Android (android.graphics.Color)	4294941868 (0xFFFF9CAC)
YUV	187.4250, -7.6045, 59.2633
Hunter-Lab	69.4824, 34.7970, 9.9281

Details

The CIELCh color **75, 39.478, 10.982** is a light color, and the websafe version is hex **FF9999**. A complement of this color would be **94, 32.587, 182.636**, and the grayscale version is **76, 0.009, 296.813**.

A 20% lighter version of the original color is **89, 17.464, 354.310**, and **55, 39.486, 10.913** is the 20% darker color. If you saturate the color by 10%, you get **69, 50.246, 12.898**, and if you desaturate by 10%, it is **81, 28.479, 9.303**.

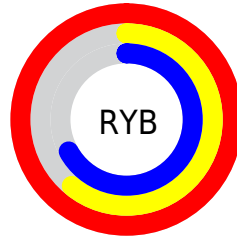
Distribution



Red (100%)

Green (61%)

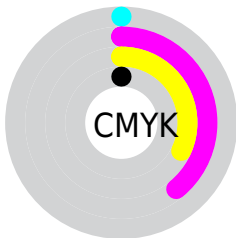
Blue (67%)



Red (100%)

Yellow (61%)

Blue (67%)

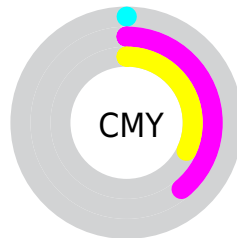


Cyan (0%)

Magenta (39%)

Yellow (32%)

Black (0%)



Cyan (0%)

Magenta (39%)

Yellow (32%)


Brightness & Saturation Gradients

These gradients show how the CIELCh color 75, 39.478, 10.982 changes by changing the brightness by 10 percent. The first figure shows a shift by +10% for each color and the second figure -10%.

Similar to the brightness gradients but the following saturation gradients show a change of the CIELCh color 75, 39.478, 10.982 by changing the saturation by 10% instead.

 75, 39.478, 10.982

 75, 39.478, 10.982

 100, 39.478,
10.982

 65, 39.478, 10.982

 95, 39.478, 10.982

 55, 39.478, 10.982

 45, 39.478, 10.982

 35, 39.478, 10.982

 25, 39.478, 10.982

 15, 39.478, 10.982

 5, 39.478, 10.982

 0, 39.478, 10.982

 75, 39.478, 10.982

 75, 39.478, 10.982

69, 50.246, 12.898

81, 28.479, 9.303

64, 61.031, 15.429

87, 18.056, 7.998

60, 71.229, 18.644

94, 8.136, 6.885

57, 80.467, 22.663

100, 0.012,
296.813

55, 88.542, 27.455

54, 95.445, 32.589

53, 96.339, 33.224

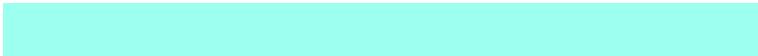
Harmonies

Complementary

The Complementary color scheme is a pair of colors which are on the opposite of each other on the color wheel.



75, 39.478, 10.982



94, 32.587, 182.636

Rectangle

The Rectangle color scheme consists of four colors that form a rectangle on the color wheel.



75, 39.478, 10.982



75, 39.478, 60.982



75, 39.478, 190.982



75, 39.478, 240.982

Sweetspot

The Sweet Spot groups the original color and five complimentary colors.



75, 39.284, 10.901



92, 11.405, 7.245



76, 59.053, 321.544



48, 7.593, 7.388



0, 0.000, 0.000



53, 0.007, 296.813

Same Dimension

The Same Dimension uses a secret algorithm to generate beautiful new colors.



75, 39.284, 10.901



71, 47.348, 12.324



82, 32.410, 52.901



50, 5.364, 6.977



40, 76.849, 32.276



10, 32.208, 20.497

Inverse Universe

The Inverse Universe completely reimagines the original color for something new.



75, 39.284, 10.901



71, 47.348, 12.324



85, 25.827, 240.685



50, 5.364, 6.977



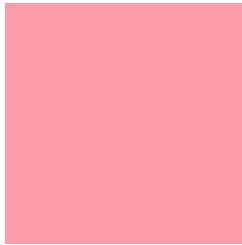
40, 76.849, 32.276



10, 32.208, 20.497

Previews

White Background



This preview shows how the CIELCh color 75, 39.478, 10.982 looks on a white background.

Color Contrast Check

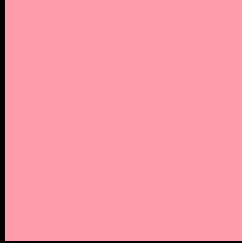
Large Text (above 18pt) WCAG AA × Fail

Any Text WCAG AA × Fail

Large Text (above 18pt) WCAG AAA × Fail

Any Text WCAG AAA × Fail

Black Background



This preview shows how the CIE LCh color 75, 39.478, 10.982 looks on a black background.

Color Contrast Check

Large Text (above 18pt) WCAG AA ✓ Pass

Any Text WCAG AA ✓ Pass

Large Text (above 18pt) WCAG AAA ✓ Pass

Any Text WCAG AAA ✓ Pass

If you want to check with other color combinations, try the [Color Contrast Checker](#).

CIELCh 75, 39.478, 10.982

Background



This preview shows how black text looks on a background with the CIELCh color 75, 39.478, 10.982.

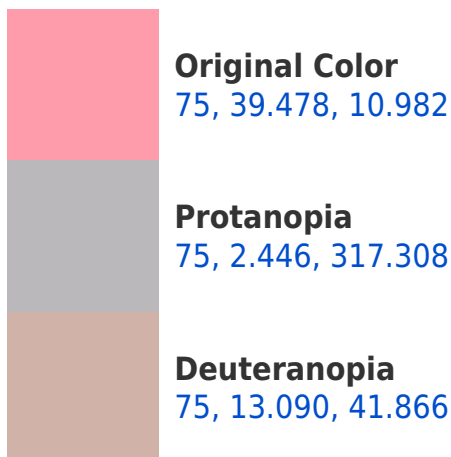


This preview shows how white text looks on a background with the CIELCh color 75, 39.478, 10.982.

Color Blindness Simulation

Color vision deficiency is a very complex topic, and I could not describe the different causes any better than Wikipedia does, so if you want to learn more, you should check out their [article about color blindness](#).

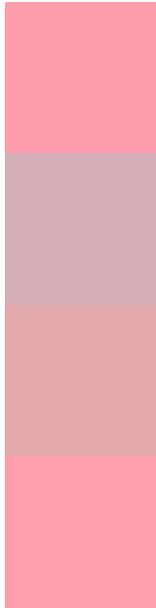
Dichromacy





Tritanopia
75, 39.016, 13.898

Trichromacy



Original Color
75, 39.478, 10.982

Protanomaly
75, 15.102, 4.223

Deuteranomaly
75, 22.040, 21.323

Tritanomaly
75, 39.013, 13.120

Monochromacy



Original Color
75, 39.478, 10.982

Achromatopsia
76, 0.009, 296.813

Achromatomaly
75, 13.617, 9.230

CSS Examples

Text

The CSS property to change the color of the text to CIELCh 75, 39.478, 10.982 is called "color". The color property can be set on classes, ids or directly on the HTML element.

This example shows how text in the color `rgb(255, 156, 172)` looks like.

```
.text, #text, p{  
    color:rgb(255, 156, 172)  
}
```

If you want to add a text shadow in that color use the text-shadow property, you can generate a text shadow directly with our [CSS Text Shadow Generator](#).

Here you see how black text with a 4 pixel rgb(255, 156, 172) colored shadow looks like.

```
.shadow{ text-shadow: 4px 4px 2px rgb(255, 156, 172) }
```

Border

The CSS property to change the border of an element to CIELCh 75, 39.478, 10.982 is called "border". The border property can be set on classes, ids or directly on the HTML element.

This example shows the color as border, it can be applied via the CSS property "border" or "border-color".

```
.border, #border, table{ border:4px solid rgb(255, 156, 172) }
```

If only the border color should be changed use the property `border-color`.

```
.border{ border-color:rgb(255, 156, 172) }
```

If you want to add a box shadow in that color use:

Here you see how a box with a 4 pixel `rgb(255, 156, 172)` colored shadow looks like.

```
.boxshadow{ -moz-box-shadow:4px 4px 4px  
4px rgb(255, 156, 172); -webkit-box-  
shadow:4px 4px 4px 4px rgb(255, 156, 172);  
box-shadow:4px 4px 4px 4px rgb(255, 156,  
172) }
```

Background

The CSS property to change the background color of an element to CIELCh 75, 39.478, 10.982 is called "background". The background property can be set on classes, ids or directly on the HTML element.

```
.background, #background, body{  
background: rgb(255, 156, 172) }
```

If only the background color should be changed can be used:

```
.background{ background-color: rgb(255,  
156, 172) }
```

This example shows the color as background, it is applied via the CSS property "background".

To optimize and compress your CSS code, you can use our [online CSS compressor and optimizer](#) based on csstidy. If you want to create a linear or radial gradient as background or border, check our [CSS Gradient Generator](#).

Hey! You found this booklet interesting? Support Converting Colors with the new Membership Option!

The pro membership hides all ads, plus gives you double the colors in the color bucket, and more awesome pro features!

[Learn more, Memberships starting at \\$2.50/m!](#)

**Follow me
on Twitter!**

@ConvertingColor