

Converting Colors

CIELCh(75, 6.441, 19.863)

Have a look what the booklet for
CIELCh(75, 6.441, 19.863) contains.

CIELCh(75, 6.434, 19.859)	3
<i>Conversions</i>	4
<i>Details</i>	6
<i>Harmonies</i>	11
<i>Previews</i>	20
<i>Color Blindness Simulation</i>	23
<i>CSS Examples</i>	26

Color

CIELCh(75, 6.434, 19.859)

Conversions

Conversions Part 1

Format	Color
Hex	C6B5B5
RGB	198, 181, 181
RGB Percent	78%, 71%, 71%
CMY	0.2243, 0.2909, 0.2909
CMYK	0.00, 0.09, 0.09, 0.22
HSL	0°, 13%, 74%
HSV	0°, 9%, 78%
XYZ	48.0436, 48.2781, 50.4002
YIQ	186.0830, 10.1320, 3.6040

Conversions

Conversions Part 2

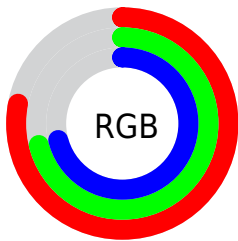
Format	Color
RYB	198, 181, 181
Decimal	13022645
CIELab	75.00, 6.05, 2.19
CIELCh	75, 6.434, 19.859
Yxy	48.2781, 0.3274, 0.3290
Android (android.graphics.Color)	4291212725 (0xFFC6B5B5)
YUV	186.0830, -2.5059, 10.4512
Hunter-Lab	69.4824, 1.8295, 5.6307

Details

The CIELCh color $75, 6.434, 19.859$ is a light color, and the websafe version is hex `CCCCCC`. A complement of this color would be $79, 6.096, 199.045$, and the grayscale version is $75, 0.009, 296.813$.

A 20% lighter version of the original color is $95, 6.460, 19.746$, and $55, 6.480, 20.038$ is the 20% darker color. If you saturate the color by 10%, you get $70, 14.476, 20.707$, and if you desaturate by 10%, it is $81, 1.012, 199.891$.

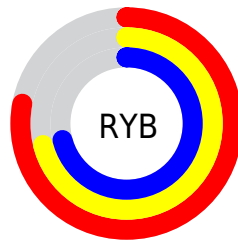
Distribution



Red (78%)

Green (71%)

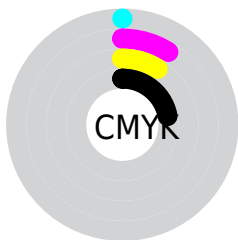
Blue (71%)



Red (78%)

Yellow (71%)

Blue (71%)

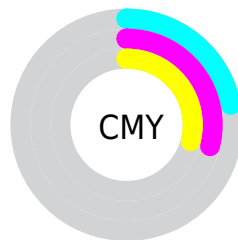


Cyan (0%)

Magenta (9%)

Yellow (9%)

Black (22%)



Cyan (22%)

Magenta (29%)

Yellow (29%)

Brightness & Saturation Gradients

These gradients show how the CIELCh color 75, 6.434, 19.859 changes by changing the brightness by 10 percent. The first figure shows a shift by +10% for each color and the second figure -10%.

Similar to the brightness gradients but the following saturation gradients show a change of the CIELCh color 75, 6.434, 19.859 by changing the saturation by 10% instead.

 75, 6.434, 19.859

 75, 6.434, 19.859

 100, 6.434, 19.859

 65, 6.434, 19.859

 95, 6.434, 19.859

 55, 6.434, 19.859

 45, 6.434, 19.859

 35, 6.434, 19.859

 25, 6.434, 19.859

 15, 6.434, 19.859

 5, 6.434, 19.859

 0, 6.434, 19.859

 75, 6.434, 19.859

 75, 6.434, 19.859

70, 14.476, 20.707

81, 1.012, 199.891

64, 23.130, 21.739

86, 7.897, 198.940

59, 32.358, 23.076

92, 14.276,
198.528

54, 42.051, 24.819

96, 18.768,
198.265

50, 52.006, 27.079

47, 61.924, 29.937

44, 71.388, 33.337

42, 79.661, 36.856

41, 85.552, 39.608

Harmonies

Complementary

The Complementary color scheme is a pair of colors which are on the opposite of each other on the color wheel.



75, 6.434, 19.859



79, 6.096, 199.045

Rectangle

The Rectangle color scheme consists of four colors that form a rectangle on the color wheel.



75, 6.434, 19.859



75, 6.434, 69.859



75, 6.434, 199.859



75, 6.434, 249.859

Sweetspot

The Sweet Spot groups the original color and five complimentary colors.



75, 6.433, 19.875



98, 2.702, 19.358



75, 11.130, 324.887



52, 2.054, 19.460



0, 0.000, 0.000



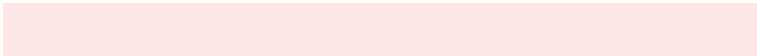
53, 0.007, 296.813

Same Dimension

The Same Dimension uses a secret algorithm to generate beautiful new colors.



75, 6.433, 19.875



93, 9.257, 19.999



77, 5.551, 74.316



39, 4.278, 19.938



34, 74.642, 39.779



3, 15.883, 19.415

Inverse Universe

The Inverse Universe completely reimagines the original color for something new.



79, 6.096, 199.045



98, 8.685, 198.949



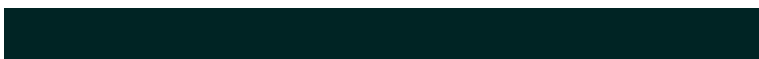
76, 5.444, 256.588



41, 4.033, 198.995



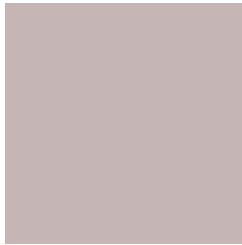
61, 35.879, 196.416



12, 12.981, 196.409

Previews

White Background



This preview shows how the CIELCh color 75, 6.434, 19.859 looks on a white background.

Color Contrast Check

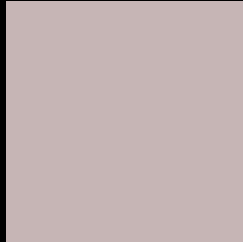
Large Text (above 18pt) WCAG AA × Fail

Any Text WCAG AA × Fail

Large Text (above 18pt) WCAG AAA × Fail

Any Text WCAG AAA × Fail

Black Background



This preview shows how the CIELCh color 75, 6.434, 19.859 looks on a black background.

Color Contrast Check

Large Text (above 18pt) WCAG AA ✓ Pass

Any Text WCAG AA ✓ Pass

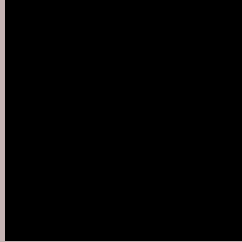
Large Text (above 18pt) WCAG AAA ✓ Pass

Any Text WCAG AAA ✓ Pass

If you want to check with other color combinations, try the [Color Contrast Checker](#).

CIELCh 75, 6.434, 19.859

Background



This preview shows how black text looks on a background with the CIELCh color 75, 6.434, 19.859.



This preview shows how white text looks on a background with the CIELCh color 75, 6.434, 19.859.

Color Blindness Simulation

Color vision deficiency is a very complex topic, and I could not describe the different causes any better than Wikipedia does, so if you want to learn more, you should check out their [article about color blindness](#).

Dichromacy



Original Color

75, 6.434, 19.859

Protanopia

75, 1.580, 39.095

Deuteranopia

75, 9.570, 13.736



Tritanopia
75, 10.613, 334.938

Trichromacy



Original Color
75, 6.434, 19.859

Protanomaly
75, 3.418, 28.573

Deuteranomaly
75, 8.373, 16.378

Tritanomaly
75, 8.612, 345.860

Monochromacy



Original Color
75, 6.434, 19.859

Achromatopsia
76, 0.009, 296.813

Achromatomaly
75, 2.241, 19.357

CSS Examples

Text

The CSS property to change the color of the text to CIELCh 75, 6.434, 19.859 is called "color". The color property can be set on classes, ids or directly on the HTML element.

This example shows how text in the color `rgb(198, 181, 181)` looks like.

```
.text, #text, p{  
    color:rgb(198, 181, 181)  
}
```

If you want to add a text shadow in that color use the text-shadow property, you can generate a text shadow directly with our [CSS Text Shadow Generator](#).

Here you see how black text with a 4 pixel rgb(198, 181, 181) colored shadow looks like.

```
.shadow{ text-shadow: 4px 4px 2px rgb(198, 181, 181) }
```

Border

The CSS property to change the border of an element to CIELCh 75, 6.434, 19.859 is called "border". The border property can be set on classes, ids or directly on the HTML element.

This example shows the color as border, it can be applied via the CSS property "border" or "border-color".

```
.border, #border, table{ border:4px solid rgb(198, 181, 181) }
```

If only the border color should be changed use the property `border-color`.

```
.border{ border-color:rgb(198, 181, 181) }
```

If you want to add a box shadow in that color use:

Here you see how a box with a 4 pixel `rgb(198, 181, 181)` colored shadow looks like.

```
.boxshadow{ -moz-box-shadow:4px 4px 4px  
4px rgb(198, 181, 181); -webkit-box-  
shadow:4px 4px 4px 4px rgb(198, 181, 181);  
box-shadow:4px 4px 4px 4px rgb(198, 181,  
181) }
```

Background

The CSS property to change the background color of an element to CIELCh 75, 6.434, 19.859 is called "background". The background property can be set on classes, ids or directly on the HTML element.

```
.background, #background, body{  
background: rgb(198, 181, 181) }
```

If only the background color should be changed can be used:

```
.background{ background-color: rgb(198,  
181, 181) }
```

This example shows the color as background, it is applied via the CSS property "background".

To optimize and compress your CSS code, you can use our [online CSS compressor and optimizer](#) based on csstidy. If you want to create a linear or radial gradient as background or border, check our [CSS Gradient Generator](#).

Hey! You found this booklet interesting? Support Converting Colors with the new Membership Option!

The pro membership hides all ads, plus gives you double the colors in the color bucket, and more awesome pro features!

[Learn more, Memberships starting at \\$2.50/m!](#)

**Follow me
on Twitter!**

@ConvertingColor