

Converting Colors

CIELCh(75, 6.736, 58.401)

Have a look what the booklet for
CIELCh(75, 6.736, 58.401) contains.

CIELCh(75, 6.869, 58.383)	3
<i>Conversions</i>	4
<i>Details</i>	6
<i>Harmonies</i>	11
<i>Previews</i>	20
<i>Color Blindness Simulation</i>	23
<i>CSS Examples</i>	26

Color

CIELCh(75, 6.869, 58.383)

Conversions

Conversions Part 1

Format	Color
Hex	C4B6AE
RGB	196, 182, 174
RGB Percent	77%, 71%, 68%
CMY	0.2312, 0.2861, 0.3174
CMYK	0.00, 0.07, 0.11, 0.23
HSL	22°, 16%, 73%
HSV	22°, 11%, 77%
XYZ	47.1623, 48.2781, 46.9037
YIQ	185.2740, 10.9120, 0.4800

Conversions

Conversions Part 2

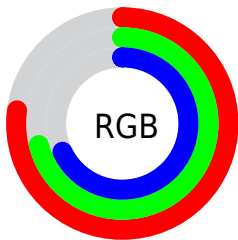
Format	Color
RYB	196, 187, 174
Decimal	12891822
CIELab	75.00, 3.60, 5.85
CIElCh	75, 6.869, 58.383
Yxy	48.2781, 0.3313, 0.3392
Android (android.graphics.Color)	4291081902 (0xFFC4B6AE)
YUV	185.2740, -5.5581, 9.4067
Hunter-Lab	69.4824, -0.4345, 8.6143

Details

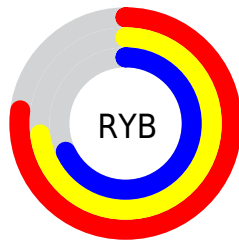
The CIELCh color $75, 6.869, 58.383$ is a light color, and the websafe version is hex `CCCCCC`. A complement of this color would be $75, 6.526, 240.677$, and the grayscale version is $75, 0.009, 296.813$.

A 20% lighter version of the original color is $95, 7.115, 59.874$, and $55, 6.678, 56.557$ is the 20% darker color. If you saturate the color by 10%, you get $71, 13.442, 57.571$, and if you desaturate by 10%, it is $79, 0.719, 58.722$.

Distribution



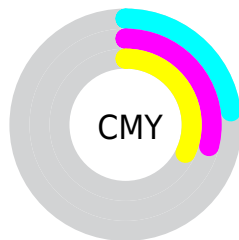
- Red (77%)
- Green (71%)
- Blue (68%)



- Red (77%)
- Yellow (73%)
- Blue (68%)



- Cyan (0%)
- Magenta (7%)
- Yellow (11%)
- Black (23%)



- Cyan (23%)
- Magenta (29%)
- Yellow (32%)

Brightness & Saturation Gradients

These gradients show how the CIELCh color 75, 6.869, 58.383 changes by changing the brightness by 10 percent. The first figure shows a shift by +10% for each color and the second figure -10%.

Similar to the brightness gradients but the following saturation gradients show a change of the CIELCh color 75, 6.869, 58.383 by changing the saturation by 10% instead.

 75, 6.869, 58.383

 75, 6.869, 58.383

 100, 6.869, 58.383

 65, 6.869, 58.383

 95, 6.869, 58.383

 55, 6.869, 58.383

 45, 6.869, 58.383

 35, 6.869, 58.383

 25, 6.869, 58.383

 15, 6.869, 58.383

 5, 6.869, 58.383

 0, 6.869, 58.383

 75, 6.869, 58.383

 75, 6.869, 58.383

71, 13.442, 57.571

79, 0.719, 58.722

68, 20.477, 56.761

82, 5.051, 240.362

64, 28.004, 56.005

86, 10.485,
241.224

61, 36.024, 55.314

90, 15.624,
242.111

58, 44.485, 54.682

55, 53.222, 54.063

93, 16.563,
217.828

52, 61.841, 53.322

96, 19.297,
198.232

49, 69.520, 52.144

47, 75.017, 50.706

Harmonies

Complementary

The Complementary color scheme is a pair of colors which are on the opposite of each other on the color wheel.



75, 6.869, 58.383



75, 6.526, 240.677

Rectangle

The Rectangle color scheme consists of four colors that form a rectangle on the color wheel.



75, 6.869, 58.383



75, 6.869, 108.383



75, 6.869, 238.383



75, 6.869, 288.383

Sweetspot

The Sweet Spot groups the original color and five complimentary colors.



75, 6.869, 58.403



99, 2.209, 58.944



73, 11.308, 337.155



52, 1.680, 58.925



0, 0.000, 0.000



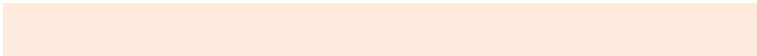
53, 0.007, 296.813

Same Dimension

The Same Dimension uses a secret algorithm to generate beautiful new colors.



75, 6.869, 58.403



94, 9.917, 58.239



78, 10.044, 102.022



39, 3.416, 58.553



39, 64.389, 51.262



5, 11.642, 44.351

Inverse Universe

The Inverse Universe completely reimagines the original color for something new.



75, 6.526, 240.677



95, 9.326, 240.897



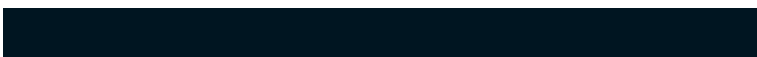
73, 10.215, 284.562



39, 3.276, 240.484



41, 38.541, 266.440



6, 11.117, 254.693

Previews

White Background



This preview shows how the CIELCh color 75, 6.869, 58.383 looks on a white background.

Color Contrast Check

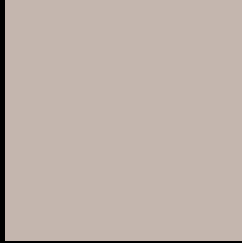
Large Text (above 18pt) WCAG AA × Fail

Any Text WCAG AA × Fail

Large Text (above 18pt) WCAG AAA × Fail

Any Text WCAG AAA × Fail

Black Background



This preview shows how the CIELCh color 75, 6.869, 58.383 looks on a black background.

Color Contrast Check

Large Text (above 18pt) WCAG AA ✓ Pass

Any Text WCAG AA ✓ Pass

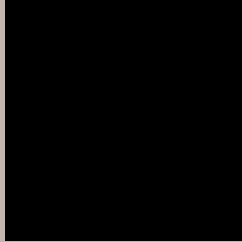
Large Text (above 18pt) WCAG AAA ✓ Pass

Any Text WCAG AAA ✓ Pass

If you want to check with other color combinations, try the [Color Contrast Checker](#).

CIELCh 75, 6.869, 58.383

Background



This preview shows how black text looks on a background with the CIELCh color 75, 6.869, 58.383.



This preview shows how white text looks on a background with the CIELCh color 75, 6.869, 58.383.

Color Blindness Simulation

Color vision deficiency is a very complex topic, and I could not describe the different causes any better than Wikipedia does, so if you want to learn more, you should check out their [article about color blindness](#).

Dichromacy



Original Color

75, 6.869, 58.383

Protanopia

75, 5.335, 84.380

Deuteranopia

75, 10.921, 28.701



Tritanopia
75, 10.613, 334.938

Trichromacy



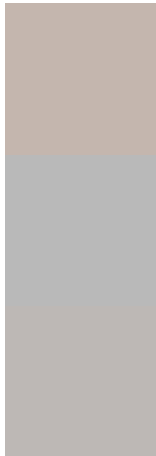
Original Color
75, 6.869, 58.383

Protanomaly
75, 5.487, 71.066

Deuteranomaly
75, 9.102, 33.686

Tritanomaly
75, 7.498, 354.481

Monochromacy



Original Color
75, 6.869, 58.383

Achromatopsia
75, 0.009, 296.813

Achromatomaly
75, 2.460, 60.275

CSS Examples

Text

The CSS property to change the color of the text to CIELCh 75, 6.869, 58.383 is called "color". The color property can be set on classes, ids or directly on the HTML element.

This example shows how text in the color `rgb(196, 182, 174)` looks like.

```
.text, #text, p{  
    color:rgb(196, 182, 174)  
}
```

If you want to add a text shadow in that color use the text-shadow property, you can generate a text shadow directly with our [CSS Text Shadow Generator](#).

Here you see how black text with a 4 pixel rgb(196, 182, 174) colored shadow looks like.

```
.shadow{ text-shadow: 4px 4px 2px rgb(196, 182, 174) }
```

Border

The CSS property to change the border of an element to CIELCh 75, 6.869, 58.383 is called "border". The border property can be set on classes, ids or directly on the HTML element.

This example shows the color as border, it can be applied via the CSS property "border" or "border-color".

```
.border, #border, table{ border:4px solid rgb(196, 182, 174) }
```

If only the border color should be changed use the property `border-color`.

```
.border{ border-color:rgb(196, 182, 174) }
```

If you want to add a box shadow in that color use:

Here you see how a box with a 4 pixel `rgb(196, 182, 174)` colored shadow looks like.

```
.boxshadow{ -moz-box-shadow:4px 4px 4px 4px rgb(196, 182, 174); -webkit-box-shadow:4px 4px 4px 4px rgb(196, 182, 174); box-shadow:4px 4px 4px 4px rgb(196, 182, 174) }
```

Background

The CSS property to change the background color of an element to CIELCh 75, 6.869, 58.383 is called "background". The background property can be set on classes, ids or directly on the HTML element.

```
.background, #background, body{  
background: rgb(196, 182, 174) }
```

If only the background color should be changed can be used:

```
.background{ background-color: rgb(196,  
182, 174) }
```

This example shows the color as background, it is applied via the CSS property "background".

To optimize and compress your CSS code, you can use our [online CSS compressor and optimizer](#) based on csstidy. If you want to create a linear or radial gradient as background or border, check our [CSS Gradient Generator](#).

Hey! You found this booklet interesting? Support Converting Colors with the new Membership Option!

The pro membership hides all ads, plus gives you double the colors in the color bucket, and more awesome pro features!

[Learn more, Memberships starting at \\$2.50/m!](#)

**Follow me
on Twitter!**

@ConvertingColor