

Converting Colors

CIELCh(75, 7.175, 6.157)

Have a look what the booklet for
CIELCh(75, 7.175, 6.157) contains.

CIELCh(75, 7.355, 7.306)	3
<i>Conversions</i>	4
<i>Details</i>	6
<i>Harmonies</i>	11
<i>Previews</i>	20
<i>Color Blindness Simulation</i>	23
<i>CSS Examples</i>	26

Color

CIELCh(75, 7.355, 7.306)

Conversions

Conversions Part 1

Format	Color
Hex	C7B4B7
RGB	199, 180, 183
RGB Percent	78%, 71%, 72%
CMY	0.2191, 0.2936, 0.2818
CMYK	0.00, 0.10, 0.08, 0.22
HSL	351°, 15%, 74%
HSV	351°, 10%, 78%
XYZ	48.4952, 48.2781, 51.6321
YIQ	186.0230, 10.3610, 4.9610

Conversions

Conversions Part 2

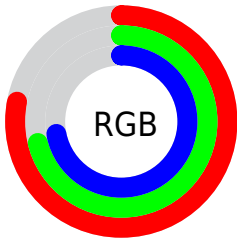
Format	Color
RYB	199, 180, 183
Decimal	13087927
CIELab	75.00, 7.30, 0.94
CIELCh	75, 7.355, 7.306
Yxy	48.2781, 0.3268, 0.3253
Android (android.graphics.Color)	4291278007 (0xFFC7B4B7)
YUV	186.0230, -1.4903, 11.3808
Hunter-Lab	69.4824, 2.9895, 4.5796

Details

The CIELCh color $75, 7.355, 7.306$ is a light color, and the websafe version is hex `CCCCCC`. A complement of this color would be $79, 7.049, 185.792$, and the grayscale version is $76, 0.009, 296.813$.

A 20% lighter version of the original color is $95, 6.980, 7.097$, and $55, 7.460, 6.898$ is the 20% darker color. If you saturate the color by 10%, you get $70, 15.493, 8.419$, and if you desaturate by 10%, it is $81, 0.340, 188.021$.

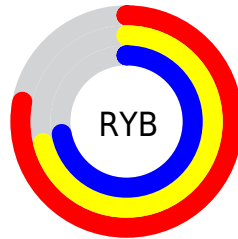
Distribution



Red (78%)

Green (71%)

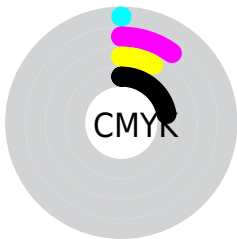
Blue (72%)



Red (78%)

Yellow (71%)

Blue (72%)

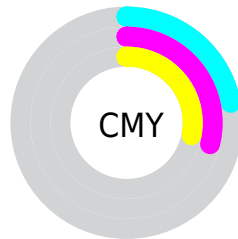


Cyan (0%)

Magenta (10%)

Yellow (8%)

Black (22%)



Cyan (22%)

Magenta (29%)

Yellow (28%)

Brightness & Saturation Gradients

These gradients show how the CIELCh color 75, 7.355, 7.306 changes by changing the brightness by 10 percent. The first figure shows a shift by +10% for each color and the second figure -10%.

Similar to the brightness gradients but the following saturation gradients show a change of the CIELCh color 75, 7.355, 7.306 by changing the saturation by 10% instead.

■ 75, 7.355, 7.306

■ 75, 7.355, 7.306

■ 100, 7.355, 7.306

■ 65, 7.355, 7.306

■ 95, 7.355, 7.306

■ 55, 7.355, 7.306

■ 45, 7.355, 7.306

■ 35, 7.355, 7.306

■ 25, 7.355, 7.306

■ 15, 7.355, 7.306

■ 5, 7.355, 7.306

■ 0, 7.355, 7.306

■ 75, 7.355, 7.306

■ 75, 7.355, 7.306

70, 15.493, 8.419

81, 0.340, 188.021

64, 24.041, 9.717

86, 7.586, 185.793

59, 32.897, 11.304

92, 14.404,
185.094

55, 41.882, 13.284

96, 18.758,
190.706

51, 50.729, 15.786

47, 59.116, 18.954

96, 18.366,
198.291

44, 66.743, 22.901

43, 73.442, 27.591

42, 79.294, 32.523

Harmonies

Complementary

The Complementary color scheme is a pair of colors which are on the opposite of each other on the color wheel.



75, 7.355, 7.306



79, 7.049, 185.792

Rectangle

The Rectangle color scheme consists of four colors that form a rectangle on the color wheel.



75, 7.355, 7.306



75, 7.355, 57.306



75, 7.355, 187.306



75, 7.355, 237.306

Sweetspot

The Sweet Spot groups the original color and five complimentary colors.



75, 7.353, 7.318



98, 2.775, 6.564



75, 11.826, 320.211



52, 2.108, 6.683



0, 0.000, 0.000



53, 0.007, 296.813

Same Dimension

The Same Dimension uses a secret algorithm to generate beautiful new colors.



75, 7.353, 7.318



93, 10.411, 7.488



77, 5.871, 54.869



39, 4.364, 7.301



34, 68.088, 31.922



3, 16.076, 11.285

Inverse Universe

The Inverse Universe completely reimagines the original color for something new.



75, 7.353, 7.318



93, 10.411, 7.488



77, 5.602, 236.627



39, 4.364, 7.301



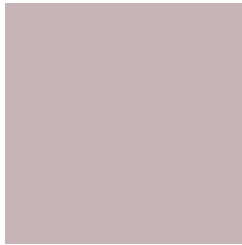
34, 68.088, 31.922



3, 16.076, 11.285

Previews

White Background



This preview shows how the CIELCh color 75, 7.355, 7.306 looks on a white background.

Color Contrast Check

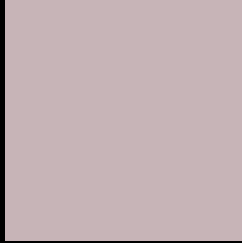
Large Text (above 18pt) WCAG AA × Fail

Any Text WCAG AA × Fail

Large Text (above 18pt) WCAG AAA × Fail

Any Text WCAG AAA × Fail

Black Background



This preview shows how the CIELCh color 75, 7.355, 7.306 looks on a black background.

Color Contrast Check

Large Text (above 18pt) WCAG AA ✓ Pass

Any Text WCAG AA ✓ Pass

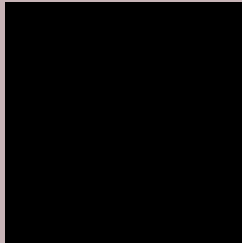
Large Text (above 18pt) WCAG AAA ✓ Pass

Any Text WCAG AAA ✓ Pass

If you want to check with other color combinations, try the [Color Contrast Checker](#).

CIELCh 75, 7.355, 7.306

Background



This preview shows how black text looks on a background with the CIELCh color 75, 7.355, 7.306.



This preview shows how white text looks on a background with the CIELCh color 75, 7.355, 7.306.

Color Blindness Simulation

Color vision deficiency is a very complex topic, and I could not describe the different causes any better than Wikipedia does, so if you want to learn more, you should check out their [article about color blindness](#).

Dichromacy



Original Color


75, 7.355, 7.306

Protanopia

75, 1.592, 359.414

Deuteranopia

75, 9.340, 6.869



Tritanopia
75, 10.876, 336.374

Trichromacy



Original Color

75, 7.355, 7.306

Protanomaly

75, 3.416, 10.479

Deuteranomaly

75, 8.966, 6.263

Tritanomaly

75, 9.537, 345.808

Monochromacy



Original Color

75, 7.355, 7.306

Achromatopsia

76, 0.009, 296.813

Achromatomaly

75, 2.673, 7.824

CSS Examples

Text

The CSS property to change the color of the text to CIELCh 75, 7.355, 7.306 is called "color". The color property can be set on classes, ids or directly on the HTML element.

This example shows how text in the color `rgb(199, 180, 183)` looks like.

```
.text, #text, p{  
    color:rgb(199, 180, 183)  
}
```

If you want to add a text shadow in that color use the text-shadow property, you can generate a text shadow directly with our [CSS Text Shadow Generator](#).

Here you see how black text with a 4 pixel rgb(199, 180, 183) colored shadow looks like.

```
.shadow{ text-shadow: 4px 4px 2px rgb(199, 180, 183) }
```

Border

The CSS property to change the border of an element to CIELCh 75, 7.355, 7.306 is called "border". The border property can be set on classes, ids or directly on the HTML element.

This example shows the color as border, it can be applied via the CSS property "border" or "border-color".

```
.border, #border, table{ border:4px solid rgb(199, 180, 183) }
```

If only the border color should be changed use the property `border-color`.

```
.border{ border-color:rgb(199, 180, 183) }
```

If you want to add a box shadow in that color use:

Here you see how a box with a 4 pixel `rgb(199, 180, 183)` colored shadow looks like.

```
.boxshadow{ -moz-box-shadow:4px 4px 4px  
4px rgb(199, 180, 183); -webkit-box-  
shadow:4px 4px 4px 4px rgb(199, 180, 183);  
box-shadow:4px 4px 4px 4px rgb(199, 180,  
183) }
```

Background

The CSS property to change the background color of an element to CIELCh 75, 7.355, 7.306 is called "background". The background property can be set on classes, ids or directly on the HTML element.

```
.background, #background, body{  
background: rgb(199, 180, 183) }
```

If only the background color should be changed can be used:

```
.background{ background-color: rgb(199,  
180, 183) }
```

This example shows the color as background, it is applied via the CSS property "background".

To optimize and compress your CSS code, you can use our [online CSS compressor and optimizer](#) based on csstidy. If you want to create a linear or radial gradient as background or border, check our [CSS Gradient Generator](#).

Hey! You found this booklet interesting? Support Converting Colors with the new Membership Option!

The pro membership hides all ads, plus gives you double the colors in the color bucket, and more awesome pro features!

[Learn more, Memberships starting at \\$2.50/m!](#)

**Follow me
on Twitter!**

@ConvertingColor