

Converting Colors

CIELCh(75, 8.099, 33.807)

Have a look what the booklet for
CIELCh(75, 8.099, 33.807) contains.

CIELCh(75, 8.193, 31.312)	3
<i>Conversions</i>	4
<i>Details</i>	6
<i>Harmonies</i>	11
<i>Previews</i>	20
<i>Color Blindness Simulation</i>	23
<i>CSS Examples</i>	26

Color

CIELCh(75, 8.193, 31.312)

Conversions

Conversions Part 1

Format	Color
Hex	C9B4B1
RGB	201, 180, 177
RGB Percent	79%, 71%, 69%
CMY	0.2115, 0.2938, 0.3056
CMYK	0.00, 0.10, 0.12, 0.21
HSL	8°, 18%, 74%
HSV	8°, 12%, 79%
XYZ	48.3876, 48.2781, 48.4021
YIQ	185.9370, 13.4790, 3.5190

Conversions

Conversions Part 2

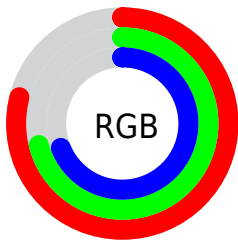
Format	Color
R _Y B	201, 180, 177
Decimal	13218993
CIE Lab	75.00, 7.00, 4.26
CIE LCh	75, 8.193, 31.312
Yxy	48.2781, 0.3336, 0.3328
Android (android.graphics.Color)	4291409073 (0xFFC9B4B1)
YUV	185.9370, -4.4059, 13.2103
Hunter-Lab	69.4824, 2.7132, 7.3358

Details

The CIELCh color $75, 8.193, 31.312$ is a light color, and the websafe version is hex `CCCCCC`. A complement of this color would be $78, 7.579, 211.204$, and the grayscale version is $76, 0.009, 296.813$.

A 20% lighter version of the original color is $95, 7.025, 32.374$, and $55, 8.399, 31.950$ is the 20% darker color. If you saturate the color by 10%, you get $70, 15.694, 31.674$, and if you desaturate by 10%, it is $80, 1.275, 30.781$.

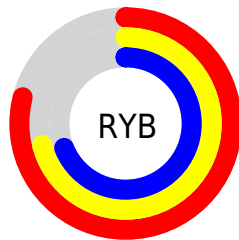
Distribution



Red (79%)

Green (71%)

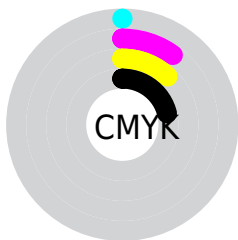
Blue (69%)



Red (79%)

Yellow (71%)

Blue (69%)

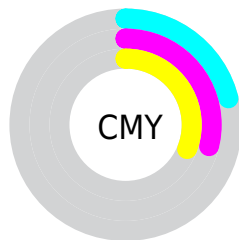


Cyan (0%)

Magenta (10%)

Yellow (12%)

Black (21%)



Cyan (21%)

Magenta (29%)

Yellow (31%)

Brightness & Saturation Gradients

These gradients show how the CIELCh color 75, 8.193, 31.312 changes by changing the brightness by 10 percent. The first figure shows a shift by +10% for each color and the second figure -10%.

Similar to the brightness gradients but the following saturation gradients show a change of the CIELCh color 75, 8.193, 31.312 by changing the saturation by 10% instead.

 75, 8.193, 31.312  75, 8.193, 31.312

 100, 8.193, 31.312  65, 8.193, 31.312

 95, 8.193, 31.312  55, 8.193, 31.312

 45, 8.193, 31.312

 35, 8.193, 31.312

 25, 8.193, 31.312

 15, 8.193, 31.312

 5, 8.193, 31.312

 0, 8.193, 31.312

 75, 8.193, 31.312  75, 8.193, 31.312

70, 15.694, 31.674

80, 1.275, 30.781

65, 23.815, 32.182

85, 5.105, 211.253

61, 32.561, 32.916

90, 11.005,
211.197

56, 41.892, 33.937

95, 16.362,
206.702

53, 51.691, 35.294

49, 61.725, 36.992

96, 17.772,
198.329

46, 71.527, 38.898

44, 80.078, 40.547

43, 85.356, 41.531

Harmonies

Complementary

The Complementary color scheme is a pair of colors which are on the opposite of each other on the color wheel.



75, 8.193, 31.312



78, 7.579, 211.204

Rectangle

The Rectangle color scheme consists of four colors that form a rectangle on the color wheel.



75, 8.193, 31.312



75, 8.193, 81.312



75, 8.193, 211.312



75, 8.193, 261.312

Sweetspot

The Sweet Spot groups the original color and five complimentary colors.



75, 8.192, 31.327



98, 3.222, 31.039



75, 14.492, 328.458



52, 2.297, 31.083



0, 0.000, 0.000



53, 0.007, 296.813

Same Dimension

The Same Dimension uses a secret algorithm to generate beautiful new colors.



75, 8.192, 31.327



91, 11.761, 31.396



78, 8.631, 85.380



39, 3.817, 31.251



35, 72.715, 41.697



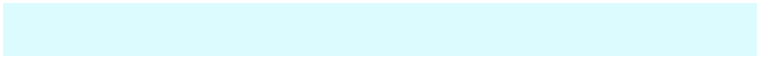
4, 14.732, 26.428

Inverse Universe

The Inverse Universe completely reimagines the original color for something new.



78, 7.579, 211.204



96, 10.711, 211.197



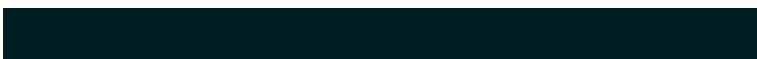
75, 8.556, 268.563



41, 3.594, 211.225



54, 31.485, 219.124



10, 11.579, 213.572

Previews

White Background



This preview shows how the CIELCh color 75, 8.193, 31.312 looks on a white background.

Color Contrast Check

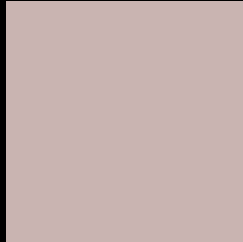
Large Text (above 18pt) WCAG AA × Fail

Any Text WCAG AA × Fail

Large Text (above 18pt) WCAG AAA × Fail

Any Text WCAG AAA × Fail

Black Background



This preview shows how the CIELCh color 75, 8.193, 31.312 looks on a black background.

Color Contrast Check

Large Text (above 18pt) WCAG AA ✓ Pass

Any Text WCAG AA ✓ Pass

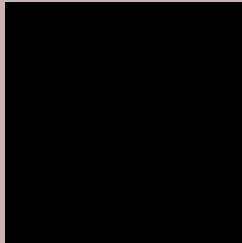
Large Text (above 18pt) WCAG AAA ✓ Pass

Any Text WCAG AAA ✓ Pass

If you want to check with other color combinations, try the [Color Contrast Checker](#).

CIELCh 75, 8.193, 31.312

Background



This preview shows how black text looks on a background with the CIELCh color 75, 8.193, 31.312.



This preview shows how white text looks on a background with the CIELCh color 75, 8.193, 31.312.

Color Blindness Simulation

Color vision deficiency is a very complex topic, and I could not describe the different causes any better than Wikipedia does, so if you want to learn more, you should check out their [article about color blindness](#).

Dichromacy



Original Color

75, 8.193, 31.312

Protanopia

75, 3.267, 74.677

Deuteranopia

75, 10.037, 26.300



Tritanopia
75, 12.001, 341.501

Trichromacy



Original Color
75, 8.193, 31.312

Protanomaly
75, 4.633, 54.987

Deuteranomaly
75, 9.648, 26.516

Tritanomaly
75, 9.661, 353.760

Monochromacy



Original Color
75, 8.193, 31.312

Achromatopsia
76, 0.009, 296.813

Achromatomaly
75, 2.670, 31.030

CSS Examples

Text

The CSS property to change the color of the text to CIELCh 75, 8.193, 31.312 is called "color". The color property can be set on classes, ids or directly on the HTML element.

This example shows how text in the color `rgb(201, 180, 177)` looks like.

```
.text, #text, p{  
    color:rgb(201, 180, 177)  
}
```

If you want to add a text shadow in that color use the text-shadow property, you can generate a text shadow directly with our [CSS Text Shadow Generator](#).

Here you see how black text with a 4 pixel rgb(201, 180, 177) colored shadow looks like.

```
.shadow{ text-shadow: 4px 4px 2px rgb(201, 180, 177) }
```

Border

The CSS property to change the border of an element to CIELCh 75, 8.193, 31.312 is called "border". The border property can be set on classes, ids or directly on the HTML element.

This example shows the color as border, it can be applied via the CSS property "border" or "border-color".

```
.border, #border, table{ border:4px solid rgb(201, 180, 177) }
```

If only the border color should be changed use the property border-color.

```
.border{ border-color:rgb(201, 180, 177) }
```

If you want to add a box shadow in that color use:

Here you see how a box with a 4 pixel rgb(201, 180, 177) colored shadow looks like.

```
.boxshadow{ -moz-box-shadow:4px 4px 4px  
4px rgb(201, 180, 177); -webkit-box-  
shadow:4px 4px 4px 4px rgb(201, 180, 177);  
box-shadow:4px 4px 4px 4px rgb(201, 180,  
177) }
```

Background

The CSS property to change the background color of an element to CIELCh 75, 8.193, 31.312 is called "background". The background property can be set on classes, ids or directly on the HTML element.

```
.background, #background, body{  
background: rgb(201, 180, 177) }
```

If only the background color should be changed can be used:

```
.background{ background-color: rgb(201,  
180, 177) }
```

This example shows the color as background, it is applied via the CSS property "background".

To optimize and compress your CSS code, you can use our [online CSS compressor and optimizer](#) based on csstidy. If you want to create a linear or radial gradient as background or border, check our [CSS Gradient Generator](#).

Hey! You found this booklet interesting? Support Converting Colors with the new Membership Option!

The pro membership hides all ads, plus gives you double the colors in the color bucket, and more awesome pro features!

[Learn more, Memberships starting at \\$2.50/m!](#)

**Follow me
on Twitter!**

@ConvertingColor