

Converting Colors

CIELCh(75, 8.301, 57.509)

Have a look what the booklet for
CIELCh(75, 8.301, 57.509) contains.

CIELCh(75, 8.147, 56.145)	3
<i>Conversions</i>	4
<i>Details</i>	6
<i>Harmonies</i>	11
<i>Previews</i>	20
<i>Color Blindness Simulation</i>	23
<i>CSS Examples</i>	26

Color

CIELCh(75, 8.147, 56.145)

Conversions

Conversions Part 1

Format	Color
Hex	C6B5AC
RGB	198, 181, 172
RGB Percent	78%, 71%, 67%
CMY	0.2218, 0.2885, 0.3238
CMYK	0.00, 0.09, 0.13, 0.22
HSL	21°, 19%, 73%
HSV	21°, 13%, 78%
XYZ	47.4983, 48.2781, 46.0554
YIQ	185.0570, 13.0210, 0.8050

Conversions

Conversions Part 2

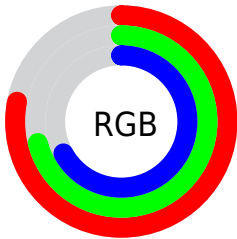
Format	Color
R _Y B	198, 186, 172
Decimal	13022636
CIE Lab	75.00, 4.54, 6.77
CIE LCh	75, 8.147, 56.145
Yxy	48.2781, 0.3349, 0.3404
Android (android.graphics.Color)	4291212716 (0xFFC6B5AC)
YUV	185.0570, -6.4371, 11.3510
Hunter-Lab	69.4824, 0.4285, 9.3383

Details

The CIELCh color **75, 8.147, 56.145** is a light color, and the websafe version is hex **CCCCCC**. A complement of this color would be **76, 7.640, 238.639**, and the grayscale version is **75, 0.009, 296.813**.

A 20% lighter version of the original color is **95, 8.313, 57.612**, and **55, 8.067, 54.397** is the 20% darker color. If you saturate the color by 10%, you get **71, 14.880, 55.403**, and if you desaturate by 10%, it is **79, 1.864, 56.789**.

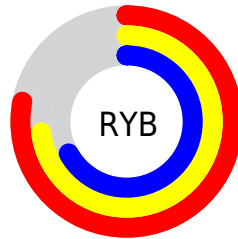
Distribution



Red (78%)

Green (71%)

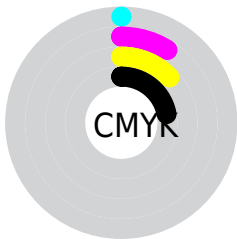
Blue (67%)



Red (78%)

Yellow (73%)

Blue (67%)

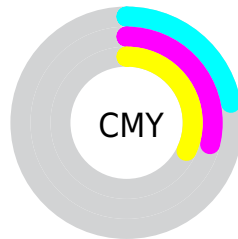


Cyan (0%)

Magenta (9%)

Yellow (13%)

Black (22%)



Cyan (22%)

Magenta (29%)

Yellow (32%)

Brightness & Saturation Gradients

These gradients show how the CIELCh color 75, 8.147, 56.145 changes by changing the brightness by 10 percent. The first figure shows a shift by +10% for each color and the second figure -10%.

Similar to the brightness gradients but the following saturation gradients show a change of the CIELCh color 75, 8.147, 56.145 by changing the saturation by 10% instead.

 75, 8.147, 56.145

 75, 8.147, 56.145

 100, 8.147, 56.145

 65, 8.147, 56.145

 95, 8.147, 56.145

 55, 8.147, 56.145

 45, 8.147, 56.145

 35, 8.147, 56.145

 25, 8.147, 56.145

 15, 8.147, 56.145

 5, 8.147, 56.145

 0, 8.147, 56.145

 75, 8.147, 56.145

 75, 8.147, 56.145

71, 14.880, 55.403

79, 1.864, 56.789

68, 22.105, 54.685

83, 4.015, 238.012

64, 29.847, 54.034

87, 9.533, 238.801

61, 38.104, 53.462

91, 14.736,
239.640

57, 46.807, 52.961

94, 16.196,
214.664

54, 55.762, 52.474

51, 64.505, 51.838

96, 18.579,
198.277

49, 72.089, 50.685

47, 76.459, 49.664

Harmonies

Complementary

The Complementary color scheme is a pair of colors which are on the opposite of each other on the color wheel.



75, 8.147, 56.145



76, 7.640, 238.639

Rectangle

The Rectangle color scheme consists of four colors that form a rectangle on the color wheel.



75, 8.147, 56.145



75, 8.147, 106.145



75, 8.147, 236.145



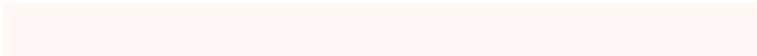
75, 8.147, 286.145

Sweetspot

The Sweet Spot groups the original color and five complimentary colors.



75, 8.147, 56.162



98, 2.951, 56.770



73, 13.518, 336.571



52, 2.103, 56.738



0, 0.000, 0.000



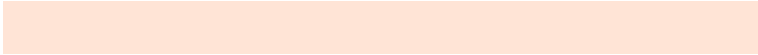
53, 0.007, 296.813

Same Dimension

The Same Dimension uses a secret algorithm to generate beautiful new colors.



75, 8.147, 56.162



92, 12.324, 55.923



78, 11.653, 100.879



40, 3.485, 56.441



39, 65.798, 50.187



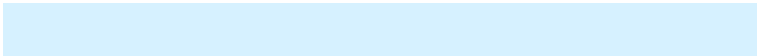
6, 13.336, 41.650

Inverse Universe

The Inverse Universe completely reimagines the original color for something new.



76, 7.640, 238.639



94, 11.362, 238.988



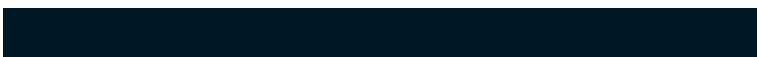
72, 11.862, 283.909



40, 3.334, 238.264



43, 37.770, 263.710



7, 11.805, 252.306

Previews

White Background



This preview shows how the CIELCh color 75, 8.147, 56.145 looks on a white background.

Color Contrast Check

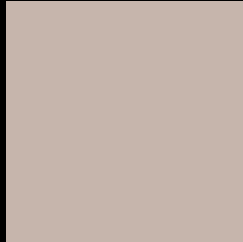
Large Text (above 18pt) WCAG AA × Fail

Any Text WCAG AA × Fail

Large Text (above 18pt) WCAG AAA × Fail

Any Text WCAG AAA × Fail

Black Background



This preview shows how the CIELCh color 75, 8.147, 56.145 looks on a black background.

Color Contrast Check

Large Text (above 18pt) WCAG AA ✓ Pass

Any Text WCAG AA ✓ Pass

Large Text (above 18pt) WCAG AAA ✓ Pass

Any Text WCAG AAA ✓ Pass

If you want to check with other color combinations, try the [Color Contrast Checker](#).

CIELCh 75, 8.147, 56.145

Background



This preview shows how black text looks on a background with the CIELCh color 75, 8.147, 56.145.



This preview shows how white text looks on a background with the CIELCh color 75, 8.147, 56.145.

Color Blindness Simulation

Color vision deficiency is a very complex topic, and I could not describe the different causes any better than Wikipedia does, so if you want to learn more, you should check out their [article about color blindness](#).

Dichromacy



Original Color

75, 8.147, 56.145

Protanopia

75, 5.988, 83.168

Deuteranopia

75, 11.566, 33.641



Tritanopia
75, 11.432, 339.057

Trichromacy



Original Color
75, 8.147, 56.145

Protanomaly
75, 6.821, 71.467

Deuteranomaly
75, 10.199, 38.480

Tritanomaly
75, 8.547, 357.906

Monochromacy



Original Color
75, 8.147, 56.145

Achromatopsia
75, 0.009, 296.813

Achromatomaly
75, 3.102, 63.229

CSS Examples

Text

The CSS property to change the color of the text to CIELCh 75, 8.147, 56.145 is called "color". The color property can be set on classes, ids or directly on the HTML element.

This example shows how text in the color `rgb(198, 181, 172)` looks like.

```
.text, #text, p{  
    color:rgb(198, 181, 172)  
}
```

If you want to add a text shadow in that color use the text-shadow property, you can generate a text shadow directly with our [CSS Text Shadow Generator](#).

Here you see how black text with a 4 pixel rgb(198, 181, 172) colored shadow looks like.

```
.shadow{ text-shadow: 4px 4px 2px rgb(198, 181, 172) }
```

Border

The CSS property to change the border of an element to CIELCh 75, 8.147, 56.145 is called "border". The border property can be set on classes, ids or directly on the HTML element.

This example shows the color as border, it can be applied via the CSS property "border" or "border-color".

```
.border, #border, table{ border:4px solid rgb(198, 181, 172) }
```

If only the border color should be changed use the property `border-color`.

```
.border{ border-color:rgb(198, 181, 172) }
```

If you want to add a box shadow in that color use:

Here you see how a box with a 4 pixel `rgb(198, 181, 172)` colored shadow looks like.

```
.boxshadow{ -moz-box-shadow:4px 4px 4px  
4px rgb(198, 181, 172); -webkit-box-  
shadow:4px 4px 4px 4px rgb(198, 181, 172);  
box-shadow:4px 4px 4px 4px rgb(198, 181,  
172) }
```

Background

The CSS property to change the background color of an element to CIELCh 75, 8.147, 56.145 is called "background". The background property can be set on classes, ids or directly on the HTML element.

```
.background, #background, body{  
background: rgb(198, 181, 172) }
```

If only the background color should be changed can be used:

```
.background{ background-color: rgb(198,  
181, 172) }
```

This example shows the color as background, it is applied via the CSS property "background".

To optimize and compress your CSS code, you can use our [online CSS compressor and optimizer](#) based on csstidy. If you want to create a linear or radial gradient as background or border, check our [CSS Gradient Generator](#).

Hey! You found this booklet interesting? Support Converting Colors with the new Membership Option!

The pro membership hides all ads, plus gives you double the colors in the color bucket, and more awesome pro features!

[Learn more, Memberships starting at \\$2.50/m!](#)

**Follow me
on Twitter!**

@ConvertingColor