

Converting Colors

CIELCh(75, 8.500, 19.486)

Have a look what the booklet for
CIELCh(75, 8.500, 19.486) contains.

CIELCh(75, 8.372, 20.043)	3
<i>Conversions</i>	4
<i>Details</i>	6
<i>Harmonies</i>	11
<i>Previews</i>	20
<i>Color Blindness Simulation</i>	23
<i>CSS Examples</i>	26

Color

CIELCh(75, 8.372, 20.043)

Conversions

Conversions Part 1

Format	Color
Hex	CAB4B4
RGB	202, 180, 180
RGB Percent	79%, 71%, 71%
CMY	0.2093, 0.2955, 0.2956
CMYK	0.00, 0.11, 0.11, 0.21
HSL	0°, 17%, 75%
HSV	0°, 11%, 79%
XYZ	48.7029, 48.2781, 49.7351
YIQ	186.5780, 13.1120, 4.6640

Conversions

Conversions Part 2

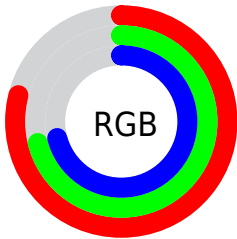
Format	Color
R _Y B	202, 180, 180
Decimal	13284532
CIE Lab	75.00, 7.86, 2.87
CIE LCh	75, 8.372, 20.043
Yxy	48.2781, 0.3320, 0.3291
Android (android.graphics.Color)	4291474612 (0xFFCAB4B4)
YUV	186.5780, -3.2430, 13.5251
Hunter-Lab	69.4824, 3.5231, 6.1983

Details

The CIELCh color $75, 8.372, 20.043$ is a light color, and the websafe version is hex `CCCCCC`. A complement of this color would be $80, 7.814, 198.900$, and the grayscale version is $76, 0.009, 296.813$.

A 20% lighter version of the original color is $95, 6.829, 19.778$, and $55, 8.564, 20.284$ is the 20% darker color. If you saturate the color by 10%, you get $69, 16.686, 20.923$, and if you desaturate by 10%, it is $81, 0.670, 18.647$.

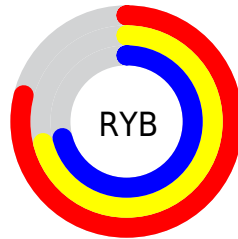
Distribution



Red (79%)

Green (71%)

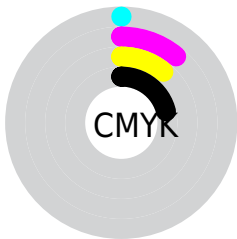
Blue (71%)



Red (79%)

Yellow (71%)

Blue (71%)

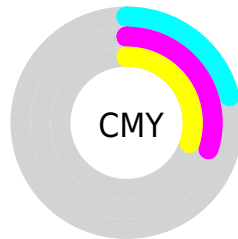


Cyan (0%)

Magenta (11%)

Yellow (11%)

Black (21%)



Cyan (21%)

Magenta (30%)

Yellow (30%)

Brightness & Saturation Gradients

These gradients show how the CIELCh color 75, 8.372, 20.043 changes by changing the brightness by 10 percent. The first figure shows a shift by +10% for each color and the second figure -10%.

Similar to the brightness gradients but the following saturation gradients show a change of the CIELCh color 75, 8.372, 20.043 by changing the saturation by 10% instead.

 75, 8.372, 20.043

 75, 8.372, 20.043

 100, 8.372, 20.043

 65, 8.372, 20.043

 95, 8.372, 20.043

 55, 8.372, 20.043

 45, 8.372, 20.043

 35, 8.372, 20.043

 25, 8.372, 20.043

 15, 8.372, 20.043

 5, 8.372, 20.043

 0, 8.372, 20.043

 75, 8.372, 20.043

 75, 8.372, 20.043

69, 16.686, 20.923

81, 0.670, 18.647

64, 25.618, 22.020

86, 6.450, 199.054

59, 35.116, 23.444

92, 13.042,
198.608

54, 45.045, 25.303

97, 17.604,
198.339

50, 55.179, 27.705

47, 65.187, 30.710

44, 74.598, 34.204

43, 82.505, 37.620

42, 87.616, 40.002

Harmonies

Complementary

The Complementary color scheme is a pair of colors which are on the opposite of each other on the color wheel.



75, 8.372, 20.043



80, 7.814, 198.900

Rectangle

The Rectangle color scheme consists of four colors that form a rectangle on the color wheel.



75, 8.372, 20.043



75, 8.372, 70.043



75, 8.372, 200.043



75, 8.372, 250.043

Sweetspot

The Sweet Spot groups the original color and five complimentary colors.



75, 8.370, 20.056



98, 2.702, 19.355



76, 14.369, 325.019



52, 2.054, 19.456



0, 0.000, 0.000



53, 0.007, 296.813

Same Dimension

The Same Dimension uses a secret algorithm to generate beautiful new colors.



75, 8.370, 20.056



91, 12.180, 20.239



78, 7.196, 74.045



40, 4.369, 19.937



34, 75.552, 39.825



4, 17.909, 19.412

Inverse Universe

The Inverse Universe completely reimagines the original color for something new.



80, 7.814, 198.900



98, 11.200, 198.771



77, 7.011, 256.902



42, 4.118, 198.990



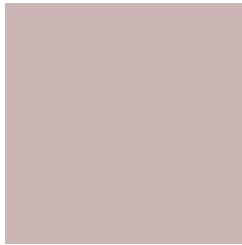
62, 36.293, 196.409



13, 13.511, 196.404

Previews

White Background



This preview shows how the CIELCh color 75, 8.372, 20.043 looks on a white background.

Color Contrast Check

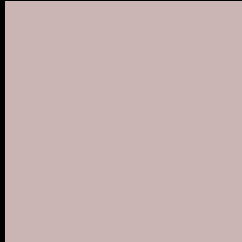
Large Text (above 18pt) WCAG AA × Fail

Any Text WCAG AA × Fail

Large Text (above 18pt) WCAG AAA × Fail

Any Text WCAG AAA × Fail

Black Background



This preview shows how the CIELCh color 75, 8.372, 20.043 looks on a black background.

Color Contrast Check

Large Text (above 18pt) WCAG AA ✓ Pass

Any Text WCAG AA ✓ Pass

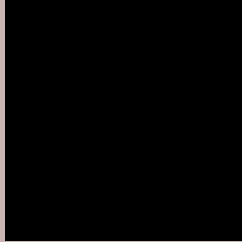
Large Text (above 18pt) WCAG AAA ✓ Pass

Any Text WCAG AAA ✓ Pass

If you want to check with other color combinations, try the [Color Contrast Checker](#).

CIELCh 75, 8.372, 20.043

Background



This preview shows how black text looks on a background with the CIELCh color 75, 8.372, 20.043.



This preview shows how white text looks on a background with the CIELCh color 75, 8.372, 20.043.

Color Blindness Simulation

Color vision deficiency is a very complex topic, and I could not describe the different causes any better than Wikipedia does, so if you want to learn more, you should check out their [article about color blindness](#).

Dichromacy



Original Color

75, 8.372, 20.043

Protanopia

75, 2.147, 49.343

Deuteranopia

75, 9.543, 16.940



Tritanopia
75, 12.001, 341.501

Trichromacy



Original Color
75, 8.372, 20.043

Protanomaly
75, 4.553, 26.437

Deuteranomaly
75, 9.155, 16.767

Tritanomaly
75, 9.902, 350.956

Monochromacy



Original Color
75, 8.372, 20.043

Achromatopsia
76, 0.009, 296.813

Achromatomaly
75, 2.993, 19.477

CSS Examples

Text

The CSS property to change the color of the text to CIELCh 75, 8.372, 20.043 is called "color". The color property can be set on classes, ids or directly on the HTML element.

This example shows how text in the color `rgb(202, 180, 180)` looks like.

```
.text, #text, p{  
    color:rgb(202, 180, 180)  
}
```

If you want to add a text shadow in that color use the text-shadow property, you can generate a text shadow directly with our [CSS Text Shadow Generator](#).

Here you see how black text with a 4 pixel rgb(202, 180, 180) colored shadow looks like.

```
.shadow{ text-shadow: 4px 4px 2px rgb(202, 180, 180) }
```

Border

The CSS property to change the border of an element to CIELCh 75, 8.372, 20.043 is called "border". The border property can be set on classes, ids or directly on the HTML element.

This example shows the color as border, it can be applied via the CSS property "border" or "border-color".

```
.border, #border, table{ border:4px solid rgb(202, 180, 180) }
```

If only the border color should be changed use the property `border-color`.

```
.border{ border-color:rgb(202, 180, 180) }
```

If you want to add a box shadow in that color use:

Here you see how a box with a 4 pixel `rgb(202, 180, 180)` colored shadow looks like.

```
.boxshadow{ -moz-box-shadow:4px 4px 4px  
4px rgb(202, 180, 180); -webkit-box-  
shadow:4px 4px 4px 4px rgb(202, 180, 180);  
box-shadow:4px 4px 4px 4px rgb(202, 180,  
180) }
```

Background

The CSS property to change the background color of an element to CIELCh 75, 8.372, 20.043 is called "background". The background property can be set on classes, ids or directly on the HTML element.

```
.background, #background, body{  
background: rgb(202, 180, 180) }
```

If only the background color should be changed can be used:

```
.background{ background-color: rgb(202,  
180, 180) }
```

This example shows the color as background, it is applied via the CSS property "background".

To optimize and compress your CSS code, you can use our [online CSS compressor and optimizer](#) based on csstidy. If you want to create a linear or radial gradient as background or border, check our [CSS Gradient Generator](#).

Hey! You found this booklet interesting? Support Converting Colors with the new Membership Option!

The pro membership hides all ads, plus gives you double the colors in the color bucket, and more awesome pro features!

[Learn more, Memberships starting at \\$2.50/m!](#)

**Follow me
on Twitter!**

@ConvertingColor