

Converting Colors

CIELCh(75, 8.687, 13.296)

Have a look what the booklet for
CIELCh(75, 8.687, 13.296) contains.

CIELCh(75, 8.802, 13.095)	3
<i>Conversions</i>	4
<i>Details</i>	6
<i>Harmonies</i>	11
<i>Previews</i>	20
<i>Color Blindness Simulation</i>	23
<i>CSS Examples</i>	26

Color

CIELCh(75, 8.802, 13.095)

Conversions

Conversions Part 1

Format	Color
Hex	CAB3B5
RGB	202, 179, 181
RGB Percent	79%, 70%, 71%
CMY	0.2068, 0.2970, 0.2892
CMYK	0.00, 0.11, 0.10, 0.21
HSL	355°, 18%, 75%
HSV	355°, 11%, 79%
XYZ	48.9619, 48.2781, 50.5876
YIQ	186.1050, 13.0660, 5.4980

Conversions

Conversions Part 2

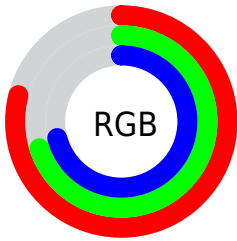
Format	Color
R _Y B	202, 179, 181
Decimal	13284277
CIE Lab	75.00, 8.57, 1.99
CIE LCh	75, 8.802, 13.095
Yxy	48.2781, 0.3312, 0.3266
Android (android.graphics.Color)	4291474357 (0xFFCAB3B5)
YUV	186.1050, -2.5168, 13.9399
Hunter-Lab	69.4824, 4.1887, 5.4709

Details

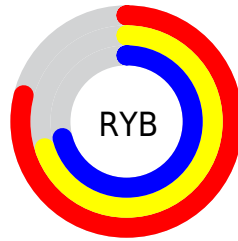
The CIELCh color $75, 8.802, 13.095$ is a light color, and the websafe version is hex `CCCCCC`. A complement of this color would be $80, 8.286, 191.444$, and the grayscale version is $76, 0.009, 296.813$.

A 20% lighter version of the original color is $95, 7.256, 11.715$, and $55, 9.015, 13.093$ is the 20% darker color. If you saturate the color by 10%, you get $69, 17.094, 14.157$, and if you desaturate by 10%, it is $81, 1.029, 11.804$.

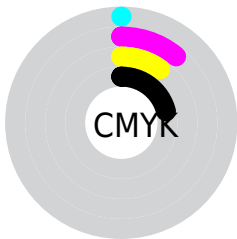
Distribution



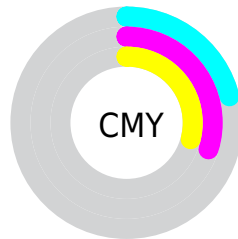
- Red (79%)
- Green (70%)
- Blue (71%)



- Red (79%)
- Yellow (70%)
- Blue (71%)



- Cyan (0%)
- Magenta (11%)
- Yellow (10%)
- Black (21%)



- Cyan (21%)
- Magenta (30%)
- Yellow (29%)

Brightness & Saturation Gradients

These gradients show how the CIELCh color 75, 8.802, 13.095 changes by changing the brightness by 10 percent. The first figure shows a shift by +10% for each color and the second figure -10%.

Similar to the brightness gradients but the following saturation gradients show a change of the CIELCh color 75, 8.802, 13.095 by changing the saturation by 10% instead.

 75, 8.802, 13.095

 75, 8.802, 13.095

 100, 8.802, 13.095

 65, 8.802, 13.095

 95, 8.802, 13.095

 55, 8.802, 13.095

 45, 8.802, 13.095

 35, 8.802, 13.095

 25, 8.802, 13.095

 15, 8.802, 13.095

 5, 8.802, 13.095

 0, 8.802, 13.095

 75, 8.802, 13.095

 75, 8.802, 13.095

69, 17.094, 14.157

81, 1.029, 11.804

64, 25.884, 15.435

86, 6.230, 191.724

59, 35.081, 17.037

92, 13.010,
191.091

55, 44.517, 19.072

97, 17.410,
198.352

50, 53.936, 21.669

47, 63.022, 24.943

45, 71.458, 28.912

43, 78.904, 33.323

42, 84.191, 36.755

Harmonies

Complementary

The Complementary color scheme is a pair of colors which are on the opposite of each other on the color wheel.



75, 8.802, 13.095



80, 8.286, 191.444

Rectangle

The Rectangle color scheme consists of four colors that form a rectangle on the color wheel.



75, 8.802, 13.095



75, 8.802, 63.095



75, 8.802, 193.095



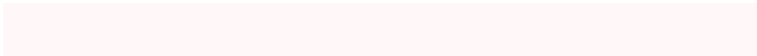
75, 8.802, 243.095

Sweetspot

The Sweet Spot groups the original color and five complimentary colors.



75, 8.800, 13.106



98, 2.725, 12.223



75, 14.577, 322.248



52, 2.071, 12.338



0, 0.000, 0.000



53, 0.007, 296.813

Same Dimension

The Same Dimension uses a secret algorithm to generate beautiful new colors.



75, 8.800, 13.106



90, 13.198, 13.385



77, 7.193, 62.684



40, 4.390, 12.915



34, 72.082, 36.140



4, 17.978, 15.134

Inverse Universe

The Inverse Universe completely reimagines the original color for something new.



75, 8.800, 13.106



90, 13.198, 13.385



77, 6.871, 245.244



40, 4.390, 12.915



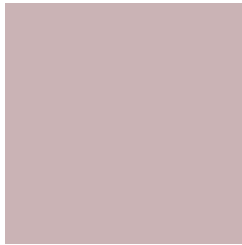
34, 72.082, 36.140



4, 17.978, 15.134

Previews

White Background



This preview shows how the CIELCh color 75, 8.802, 13.095 looks on a white background.

Color Contrast Check

Large Text (above 18pt) WCAG AA × Fail

Any Text WCAG AA × Fail

Large Text (above 18pt) WCAG AAA × Fail

Any Text WCAG AAA × Fail

Black Background



This preview shows how the CIELCh color 75, 8.802, 13.095 looks on a black background.

Color Contrast Check

Large Text (above 18pt) WCAG AA ✓ Pass

Any Text WCAG AA ✓ Pass

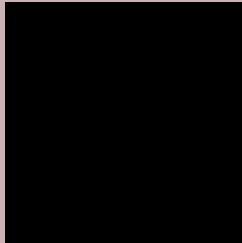
Large Text (above 18pt) WCAG AAA ✓ Pass

Any Text WCAG AAA ✓ Pass

If you want to check with other color combinations, try the [Color Contrast Checker](#).

CIELCh 75, 8.802, 13.095

Background



This preview shows how black text looks on a background with the CIELCh color 75, 8.802, 13.095.



This preview shows how white text looks on a background with the CIELCh color 75, 8.802, 13.095.

Color Blindness Simulation

Color vision deficiency is a very complex topic, and I could not describe the different causes any better than Wikipedia does, so if you want to learn more, you should check out their [article about color blindness](#).

Dichromacy



Original Color

75, 8.802, 13.095

Protanopia

75, 1.491, 19.179

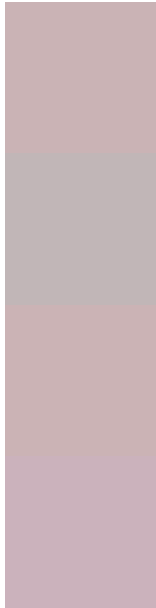
Deuteranopia

75, 9.570, 13.736



Tritanopia
75, 12.293, 342.642

Trichromacy



Original Color
75, 8.802, 13.095

Protanomaly
75, 4.168, 12.215

Deuteranomaly
75, 9.185, 13.427

Tritanomaly
75, 10.824, 350.508

Monochromacy



Original Color
75, 8.802, 13.095

Achromatopsia
76, 0.009, 296.813

Achromatomaly
75, 2.993, 19.477

CSS Examples

Text

The CSS property to change the color of the text to CIELCh 75, 8.802, 13.095 is called "color". The color property can be set on classes, ids or directly on the HTML element.

This example shows how text in the color `rgb(202, 179, 181)` looks like.

```
.text, #text, p{  
    color:rgb(202, 179, 181)  
}
```

If you want to add a text shadow in that color use the text-shadow property, you can generate a text shadow directly with our [CSS Text Shadow Generator](#).

Here you see how black text with a 4 pixel rgb(202, 179, 181) colored shadow looks like.

```
.shadow{ text-shadow: 4px 4px 2px rgb(202, 179, 181) }
```

Border

The CSS property to change the border of an element to CIELCh 75, 8.802, 13.095 is called "border". The border property can be set on classes, ids or directly on the HTML element.

This example shows the color as border, it can be applied via the CSS property "border" or "border-color".

```
.border, #border, table{ border:4px solid rgb(202, 179, 181) }
```

If only the border color should be changed use the property `border-color`.

```
.border{ border-color:rgb(202, 179, 181) }
```

If you want to add a box shadow in that color use:

Here you see how a box with a 4 pixel `rgb(202, 179, 181)` colored shadow looks like.

```
.boxshadow{ -moz-box-shadow:4px 4px 4px  
4px rgb(202, 179, 181); -webkit-box-  
shadow:4px 4px 4px 4px rgb(202, 179, 181);  
box-shadow:4px 4px 4px 4px rgb(202, 179,  
181) }
```

Background

The CSS property to change the background color of an element to CIELCh 75, 8.802, 13.095 is called "background". The background property can be set on classes, ids or directly on the HTML element.

```
.background, #background, body{  
background: rgb(202, 179, 181) }
```

If only the background color should be changed can be used:

```
.background{ background-color: rgb(202,  
179, 181) }
```

This example shows the color as background, it is applied via the CSS property "background".

To optimize and compress your CSS code, you can use our [online CSS compressor and optimizer](#) based on csstidy. If you want to create a linear or radial gradient as background or border, check our [CSS Gradient Generator](#).

Hey! You found this booklet interesting? Support Converting Colors with the new Membership Option!

The pro membership hides all ads, plus gives you double the colors in the color bucket, and more awesome pro features!

[Learn more, Memberships starting at \\$2.50/m!](#)

**Follow me
on Twitter!**

@ConvertingColor