

Converting Colors

CIELCh(75, 8.798, 57.377)

Have a look what the booklet for
CIELCh(75, 8.798, 57.377) contains.

CIELCh(75, 8.798, 57.377)	3
<i>Conversions</i>	4
<i>Details</i>	6
<i>Harmonies</i>	11
<i>Previews</i>	20
<i>Color Blindness Simulation</i>	23
<i>CSS Examples</i>	26

Color

CIELCh(75, 8.798, 57.377)

Conversions

Conversions Part 1

Format	Color
Hex	C7B5AB
RGB	199, 181, 171
RGB Percent	78%, 71%, 67%
CMY	0.2186, 0.2892, 0.3284
CMYK	0.00, 0.09, 0.14, 0.22
HSL	21°, 20%, 73%
HSV	21°, 14%, 78%
XYZ	47.5717, 48.2781, 45.4649
YIQ	185.2420, 13.9380, 0.7060

Conversions

Conversions Part 2

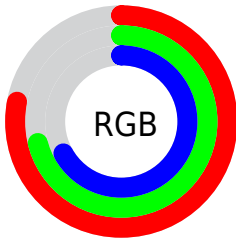
Format	Color
R_{YB}	199, 187, 171
Decimal	13088171
CIE Lab	75.00, 4.74, 7.41
CIE LCh	75, 8.798, 57.377
Yxy	48.2781, 0.3366, 0.3416
Android (android.graphics.Color)	4291278251 (0xFFC7B5AB)
YUV	185.2420, -7.0213, 12.0658
Hunter-Lab	69.4824, 0.6172, 9.8421

Details

The CIELCh color $75, 8.798, 57.377$ is a light color, and the websafe version is hex `CCCCCC`. A complement of this color would be $76, 8.226, 240.158$, and the grayscale version is $75, 0.009, 296.813$.

A 20% lighter version of the original color is $95, 8.646, 60.223$, and $55, 8.764, 55.811$ is the 20% darker color. If you saturate the color by 10%, you get $71, 15.591, 56.588$, and if you desaturate by 10%, it is $79, 2.451, 58.118$.

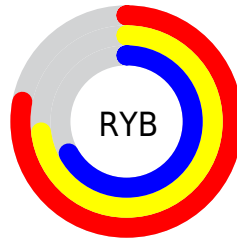
Distribution



Red (78%)

Green (71%)

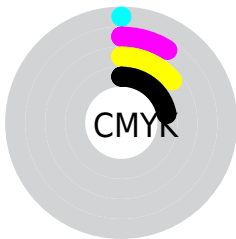
Blue (67%)



Red (78%)

Yellow (73%)

Blue (67%)

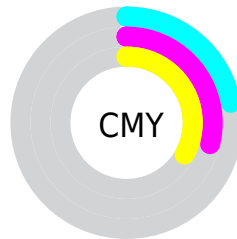


Cyan (0%)

Magenta (9%)

Yellow (14%)

Black (22%)



Cyan (22%)

Magenta (29%)

Yellow (33%)

Brightness & Saturation Gradients

These gradients show how the CIELCh color 75, 8.798, 57.377 changes by changing the brightness by 10 percent. The first figure shows a shift by +10% for each color and the second figure -10%.

Similar to the brightness gradients but the following saturation gradients show a change of the CIELCh color 75, 8.798, 57.377 by changing the saturation by 10% instead.

 75, 8.798, 57.377

 75, 8.798, 57.377

 100, 8.798, 57.377

 65, 8.798, 57.377

 95, 8.798, 57.377

 55, 8.798, 57.377

 45, 8.798, 57.377

 35, 8.798, 57.377

 25, 8.798, 57.377

 15, 8.798, 57.377

 5, 8.798, 57.377

 0, 8.798, 57.377

 75, 8.798, 57.377

 75, 8.798, 57.377

71, 15.591, 56.588

79, 2.451, 58.118

68, 22.871, 55.822

83, 3.493, 239.329

64, 30.659, 55.118

86, 9.079, 240.138

61, 38.948, 54.485

90, 14.351,
241.007

57, 47.660, 53.909

94, 15.777,
217.111

54, 56.578, 53.327

52, 65.199, 52.559

96, 18.327,
198.293

49, 72.526, 51.219

48, 76.237, 50.282

Harmonies

Complementary

The Complementary color scheme is a pair of colors which are on the opposite of each other on the color wheel.



75, 8.798, 57.377



76, 8.226, 240.158

Rectangle

The Rectangle color scheme consists of four colors that form a rectangle on the color wheel.



75, 8.798, 57.377



75, 8.798, 107.377



75, 8.798, 237.377



75, 8.798, 287.377

Sweetspot

The Sweet Spot groups the original color and five complimentary colors.



75, 8.798, 57.393



98, 2.954, 58.118



73, 14.383, 337.376



52, 2.105, 58.082



0, 0.000, 0.000



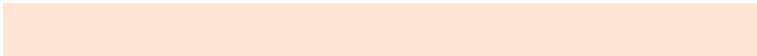
53, 0.007, 296.813

Same Dimension

The Same Dimension uses a secret algorithm to generate beautiful new colors.



75, 8.798, 57.393



92, 13.144, 57.134



79, 12.757, 101.710



40, 3.488, 57.765



39, 65.402, 50.825



6, 13.287, 42.591

Inverse Universe

The Inverse Universe completely reimagines the original color for something new.



76, 8.226, 240.158



93, 12.083, 240.538



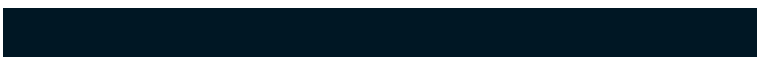
72, 13.022, 284.927



40, 3.341, 239.660



42, 38.546, 265.484



7, 11.931, 253.949

Previews

White Background



This preview shows how the CIELCh color 75, 8.798, 57.377 looks on a white background.

Color Contrast Check

Large Text (above 18pt) WCAG AA × Fail

Any Text WCAG AA × Fail

Large Text (above 18pt) WCAG AAA × Fail

Any Text WCAG AAA × Fail

Black Background



This preview shows how the CIELCh color 75, 8.798, 57.377 looks on a black background.

Color Contrast Check

Large Text (above 18pt) WCAG AA ✓ Pass

Any Text WCAG AA ✓ Pass

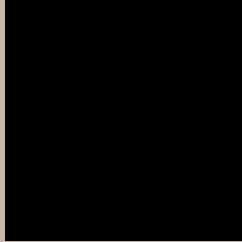
Large Text (above 18pt) WCAG AAA ✓ Pass

Any Text WCAG AAA ✓ Pass

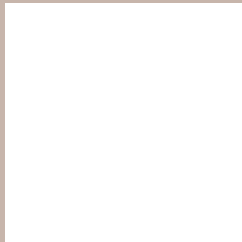
If you want to check with other color combinations, try the [Color Contrast Checker](#).

CIELCh 75, 8.798, 57.377

Background



This preview shows how black text looks on a background with the CIELCh color 75, 8.798, 57.377.



This preview shows how white text looks on a background with the CIELCh color 75, 8.798, 57.377.

Color Blindness Simulation

Color vision deficiency is a very complex topic, and I could not describe the different causes any better than Wikipedia does, so if you want to learn more, you should check out their [article about color blindness](#).

Dichromacy



Original Color

75, 8.798, 57.377

Protanopia

75, 6.477, 85.201

Deuteranopia

75, 11.728, 36.145



Tritanopia
75, 11.714, 340.307

Trichromacy



Original Color
75, 8.798, 57.377

Protanomaly
75, 7.258, 73.997

Deuteranomaly
75, 10.403, 41.230

Tritanomaly
75, 8.732, 2.182

Monochromacy



Original Color
75, 8.798, 57.377

Achromatopsia
75, 0.009, 296.813

Achromatomaly
75, 3.102, 63.229

CSS Examples

Text

The CSS property to change the color of the text to CIELCh 75, 8.798, 57.377 is called "color". The color property can be set on classes, ids or directly on the HTML element.

This example shows how text in the color `rgb(199, 181, 171)` looks like.

```
.text, #text, p{  
    color:rgb(199, 181, 171)  
}
```

If you want to add a text shadow in that color use the text-shadow property, you can generate a text shadow directly with our [CSS Text Shadow Generator](#).

Here you see how black text with a 4 pixel rgb(199, 181, 171) colored shadow looks like.

```
.shadow{ text-shadow: 4px 4px 2px rgb(199, 181, 171) }
```

Border

The CSS property to change the border of an element to CIELCh 75, 8.798, 57.377 is called "border". The border property can be set on classes, ids or directly on the HTML element.

This example shows the color as border, it can be applied via the CSS property "border" or "border-color".

```
.border, #border, table{ border:4px solid rgb(199, 181, 171) }
```

If only the border color should be changed use the property `border-color`.

```
.border{ border-color:rgb(199, 181, 171) }
```

If you want to add a box shadow in that color use:

Here you see how a box with a 4 pixel `rgb(199, 181, 171)` colored shadow looks like.

```
.boxshadow{ -moz-box-shadow:4px 4px 4px  
4px rgb(199, 181, 171); -webkit-box-  
shadow:4px 4px 4px 4px rgb(199, 181, 171);  
box-shadow:4px 4px 4px 4px rgb(199, 181,  
171) }
```

Background

The CSS property to change the background color of an element to CIELCh 75, 8.798, 57.377 is called "background". The background property can be set on classes, ids or directly on the HTML element.

```
.background, #background, body{  
background: rgb(199, 181, 171) }
```

If only the background color should be changed can be used:

```
.background{ background-color: rgb(199,  
181, 171) }
```

This example shows the color as background, it is applied via the CSS property "background".

To optimize and compress your CSS code, you can use our [online CSS compressor and optimizer](#) based on csstidy. If you want to create a linear or radial gradient as background or border, check our [CSS Gradient Generator](#).

Hey! You found this booklet interesting? Support Converting Colors with the new Membership Option!

The pro membership hides all ads, plus gives you double the colors in the color bucket, and more awesome pro features!

[Learn more, Memberships starting at \\$2.50/m!](#)

**Follow me
on Twitter!**

@ConvertingColor