

Converting Colors

CIELCh(76, 12.466, 35.198)

Have a look what the booklet for
CIELCh(76, 12.466, 35.198) contains.

CIELCh(76, 12.451, 35.196)	3
<i>Conversions</i>	4
<i>Details</i>	6
<i>Harmonies</i>	11
<i>Previews</i>	20
<i>Color Blindness Simulation</i>	23
<i>CSS Examples</i>	26

Color

CIELCh(76, 12.451, 35.196)

Conversions

Conversions Part 1

Format	Color
Hex	D4B5AF
RGB	212, 181, 175
RGB Percent	83%, 71%, 69%
CMY	0.1703, 0.2918, 0.3154
CMYK	0.00, 0.15, 0.17, 0.17
HSL	10°, 30%, 76%
HSV	10°, 17%, 83%
XYZ	51.1606, 49.8872, 47.2747
YIQ	189.5850, 20.4020, 4.7060

Conversions

Conversions Part 2

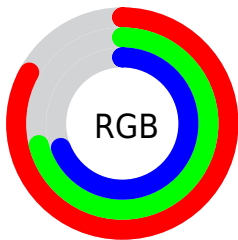
Format	Color
R _Y B	212, 182, 175
Decimal	13940143
CIE Lab	76.00, 10.17, 7.18
CIE LCh	76, 12.451, 35.196
Yxy	49.8872, 0.3449, 0.3363
Android (android.graphics.Color)	4292130223 (0xFFD4B5AF)
YUV	189.5850, -7.1904, 19.6580
Hunter-Lab	70.6309, 5.6902, 9.7577

Details

The CIELCh color **76, 12.451, 35.196** is a light color, and the websafe version is hex **CC9999**. A complement of this color would be **81, 11.083, 215.518**, and the grayscale version is **77, 0.009, 296.813**.

A 20% lighter version of the original color is **95, 7.438, 48.449**, and **56, 12.421, 33.765** is the 20% darker color. If you saturate the color by 10%, you get **71, 20.411, 35.439**, and if you desaturate by 10%, it is **81, 5.111, 35.069**.

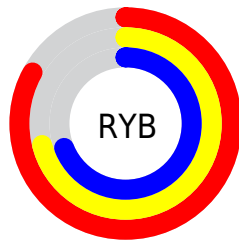
Distribution



Red (83%)

Green (71%)

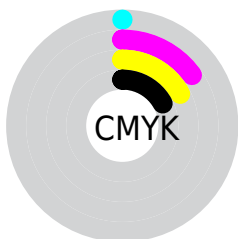
Blue (69%)



Red (83%)

Yellow (71%)

Blue (69%)

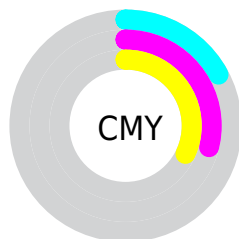


Cyan (0%)

Magenta (15%)

Yellow (17%)

Black (17%)



Cyan (17%)

Magenta (29%)

Yellow (32%)

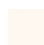
Brightness & Saturation Gradients

These gradients show how the CIELCh color 76, 12.451, 35.196 changes by changing the brightness by 10 percent. The first figure shows a shift by +10% for each color and the second figure -10%.

Similar to the brightness gradients but the following saturation gradients show a change of the CIELCh color 76, 12.451, 35.196 by changing the saturation by 10% instead.

 76, 12.451, 35.196

 76, 12.451, 35.196

 100, 12.451,
35.196

 66, 12.451, 35.196

 96, 12.451, 35.196

 56, 12.451, 35.196

 46, 12.451, 35.196

 36, 12.451, 35.196

 26, 12.451, 35.196

 16, 12.451, 35.196

 6, 12.451, 35.196

 0, 12.451, 35.196

 76, 12.451, 35.196

 76, 12.451, 35.196

71, 20.411, 35.439

81, 5.111, 35.069

66, 29.023, 35.844

86, 1.655, 215.563

62, 38.284, 36.476

91, 7.904, 215.404

58, 48.131, 37.380

96, 13.398,
206.403

54, 58.406, 38.574

97, 14.505,
198.539

51, 68.766, 39.990

48, 78.460, 41.346

46, 86.016, 42.026

46, 87.707, 42.267

Harmonies

Complementary

The Complementary color scheme is a pair of colors which are on the opposite of each other on the color wheel.



76, 12.451, 35.196



81, 11.083, 215.518

Rectangle

The Rectangle color scheme consists of four colors that form a rectangle on the color wheel.



76, 12.451, 35.196



76, 12.451, 85.196



76, 12.451, 215.196



76, 12.451, 265.196

Sweetspot

The Sweet Spot groups the original color and five complimentary colors.



76, 12.450, 35.207



97, 3.935, 35.013



75, 21.662, 329.882



51, 2.693, 35.034



0, 0.000, 0.000



53, 0.007, 296.813

Same Dimension

The Same Dimension uses a secret algorithm to generate beautiful new colors.



76, 12.450, 35.207



88, 17.679, 35.277



81, 13.680, 87.538



41, 3.870, 35.097



36, 73.601, 42.582



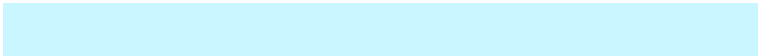
6, 18.157, 28.152

Inverse Universe

The Inverse Universe completely reimagines the original color for something new.



81, 11.083, 215.518



94, 15.310, 215.622



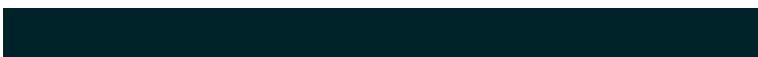
76, 13.585, 272.239



43, 3.645, 215.388



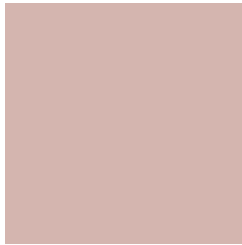
54, 31.895, 227.077



11, 12.283, 220.369

Previews

White Background



This preview shows how the CIELCh color 76, 12.451, 35.196 looks on a white background.

Color Contrast Check

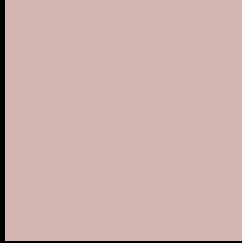
Large Text (above 18pt) WCAG AA × Fail

Any Text WCAG AA × Fail

Large Text (above 18pt) WCAG AAA × Fail

Any Text WCAG AAA × Fail

Black Background



This preview shows how the CIELCh color 76, 12.451, 35.196 looks on a black background.

Color Contrast Check

Large Text (above 18pt) WCAG AA ✓ Pass

Any Text WCAG AA ✓ Pass

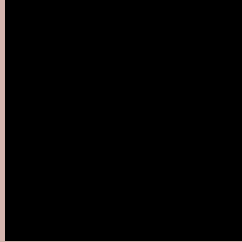
Large Text (above 18pt) WCAG AAA ✓ Pass

Any Text WCAG AAA ✓ Pass

If you want to check with other color combinations, try the [Color Contrast Checker](#).

CIELCh 76, 12.451, 35.196

Background



This preview shows how black text looks on a background with the CIELCh color 76, 12.451, 35.196.



This preview shows how white text looks on a background with the CIELCh color 76, 12.451, 35.196.

Color Blindness Simulation

Color vision deficiency is a very complex topic, and I could not describe the different causes any better than Wikipedia does, so if you want to learn more, you should check out their [article about color blindness](#).

Dichromacy



Original Color

76, 12.451, 35.196

Protanopia

76, 5.319, 84.394

Deuteranopia

76, 11.686, 36.143



Tritanopia
76, 15.437, 351.684

Trichromacy



Original Color
76, 12.451, 35.196

Protanomaly
76, 7.153, 56.468

Deuteranomaly
76, 12.067, 35.654

Tritanomaly
76, 13.416, 4.344

Monochromacy



Original Color
76, 12.451, 35.196

Achromatopsia
77, 0.009, 296.813

Achromatomaly
76, 4.264, 34.151

CSS Examples

Text

The CSS property to change the color of the text to CIELCh 76, 12.451, 35.196 is called "color". The color property can be set on classes, ids or directly on the HTML element.

This example shows how text in the color `rgb(212, 181, 175)` looks like.

```
.text, #text, p{  
    color:rgb(212, 181, 175)  
}
```

If you want to add a text shadow in that color use the text-shadow property, you can generate a text shadow directly with our [CSS Text Shadow Generator](#).

Here you see how black text with a 4 pixel rgb(212, 181, 175) colored shadow looks like.

```
.shadow{ text-shadow: 4px 4px 2px rgb(212, 181, 175) }
```

Border

The CSS property to change the border of an element to CIELCh 76, 12.451, 35.196 is called "border". The border property can be set on classes, ids or directly on the HTML element.

This example shows the color as border, it can be applied via the CSS property "border" or "border-color".

```
.border, #border, table{ border:4px solid rgb(212, 181, 175) }
```

If only the border color should be changed use the property `border-color`.

```
.border{ border-color:rgb(212, 181, 175) }
```

If you want to add a box shadow in that color use:

Here you see how a box with a 4 pixel `rgb(212, 181, 175)` colored shadow looks like.

```
.boxshadow{ -moz-box-shadow:4px 4px 4px  
4px rgb(212, 181, 175); -webkit-box-  
shadow:4px 4px 4px 4px rgb(212, 181, 175);  
box-shadow:4px 4px 4px 4px rgb(212, 181,  
175) }
```

Background

The CSS property to change the background color of an element to CIELCh 76, 12.451, 35.196 is called "background". The background property can be set on classes, ids or directly on the HTML element.

```
.background, #background, body{  
background: rgb(212, 181, 175) }
```

If only the background color should be changed can be used:

```
.background{ background-color: rgb(212,  
181, 175) }
```

This example shows the color as background, it is applied via the CSS property "background".

To optimize and compress your CSS code, you can use our [online CSS compressor and optimizer](#) based on csstidy. If you want to create a linear or radial gradient as background or border, check our [CSS Gradient Generator](#).

Hey! You found this booklet interesting? Support Converting Colors with the new Membership Option!

The pro membership hides all ads, plus gives you double the colors in the color bucket, and more awesome pro features!

[Learn more, Memberships starting at \\$2.50/m!](#)

**Follow me
on Twitter!**

@ConvertingColor