

Converting Colors

CIELCh(76, 12.928, 54.351)

Have a look what the booklet for
CIELCh(76, 12.928, 54.351) contains.

CIELCh(76, 13.018, 55.101)	3
<i>Conversions</i>	4
<i>Details</i>	6
<i>Harmonies</i>	11
<i>Previews</i>	20
<i>Color Blindness Simulation</i>	23
<i>CSS Examples</i>	26

Color

CIELCh(76, 13.018, 55.101)

Conversions

Conversions Part 1

Format	Color
Hex	D1B6A8
RGB	209, 182, 168
RGB Percent	82%, 71%, 66%
CMY	0.1801, 0.2859, 0.3409
CMYK	0.00, 0.13, 0.20, 0.18
HSL	20°, 31%, 74%
HSV	20°, 20%, 82%
XYZ	50.1385, 49.8872, 44.0718
YIQ	188.4770, 20.5860, 1.3700

Conversions

Conversions Part 2

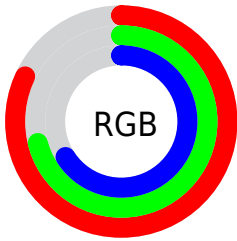
Format	Color
RYB	209, 189, 168
Decimal	13743784
CIELab	76.00, 7.45, 10.68
CIELCh	76, 13.018, 55.101
Yxy	49.8872, 0.3479, 0.3462
Android (android.graphics.Color)	4291933864 (0xFFD1B6A8)
YUV	188.4770, -10.0952, 17.9987
Hunter-Lab	70.6309, 3.1071, 12.4463

Details

The CIELCh color **76, 13.018, 55.101** is a light color, and the websafe version is hex **CCCCCC**. A complement of this color would be **77, 11.758, 238.784**, and the grayscale version is **76, 0.009, 296.813**.

A 20% lighter version of the original color is **95, 9.883, 70.424**, and **56, 12.978, 54.844** is the 20% darker color. If you saturate the color by 10%, you get **72, 20.384, 54.396**, and if you desaturate by 10%, it is **80, 6.156, 55.853**.

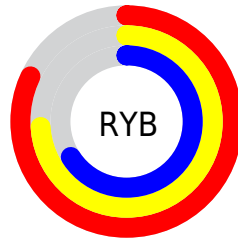
Distribution



Red (82%)

Green (71%)

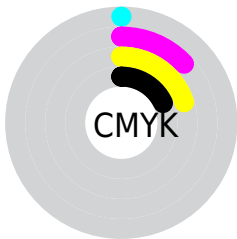
Blue (66%)



Red (82%)

Yellow (74%)

Blue (66%)

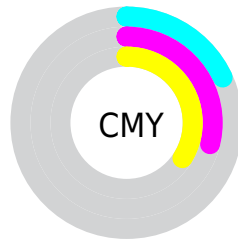


Cyan (0%)

Magenta (13%)

Yellow (20%)

Black (18%)



Cyan (18%)

Magenta (29%)

Yellow (34%)


Brightness & Saturation Gradients

These gradients show how the CIELCh color 76, 13.018, 55.101 changes by changing the brightness by 10 percent. The first figure shows a shift by +10% for each color and the second figure -10%.

Similar to the brightness gradients but the following saturation gradients show a change of the CIELCh color 76, 13.018, 55.101 by changing the saturation by 10% instead.

 76, 13.018, 55.101

 76, 13.018, 55.101

 100, 13.018,
55.101

 66, 13.018, 55.101

 96, 13.018, 55.101

 56, 13.018, 55.101

 46, 13.018, 55.101

 36, 13.018, 55.101

 26, 13.018, 55.101

 16, 13.018, 55.101

 6, 13.018, 55.101

 0, 13.018, 55.101

 76, 13.018, 55.101

 76, 13.018, 55.101

72, 20.384, 54.396

80, 6.156, 55.853

68, 28.291, 53.743

84, 0.246, 238.778

65, 36.746, 53.171

88, 6.238, 237.673

61, 45.710, 52.681

92, 11.866,
238.483

58, 55.032, 52.236

96, 14.023,
207.204

55, 64.342, 51.718

52, 72.832, 50.831

97, 15.287,
198.488

50, 79.556, 49.322

50, 79.818, 49.279

Harmonies

Complementary

The Complementary color scheme is a pair of colors which are on the opposite of each other on the color wheel.



76, 13.018, 55.101



77, 11.758, 238.784

Rectangle

The Rectangle color scheme consists of four colors that form a rectangle on the color wheel.



76, 13.018, 55.101



76, 13.018, 105.101



76, 13.018, 235.101



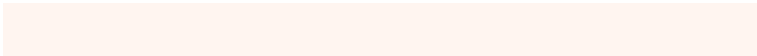
76, 13.018, 285.101

Sweetspot

The Sweet Spot groups the original color and five complimentary colors.



76, 13.018, 55.113



97, 4.458, 56.091



73, 21.185, 337.078



51, 2.964, 56.051



0, 0.000, 0.000



53, 0.007, 296.813

Same Dimension

The Same Dimension uses a secret algorithm to generate beautiful new colors.



76, 13.018, 55.113



89, 19.035, 54.772



81, 18.217, 100.139



42, 3.632, 55.868



40, 67.542, 49.832



7, 16.500, 40.844

Inverse Universe

The Inverse Universe completely reimagines the original color for something new.



77, 11.758, 238.784



91, 16.731, 239.400



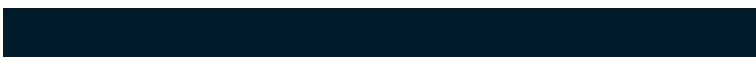
72, 18.708, 284.818



42, 3.471, 237.668



44, 38.364, 263.066



8, 13.175, 251.227

Previews

White Background



This preview shows how the CIELCh color 76, 13.018, 55.101 looks on a white background.

Color Contrast Check

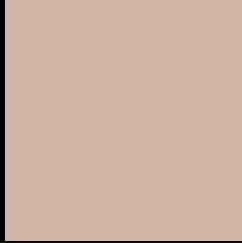
Large Text (above 18pt) WCAG AA × Fail

Any Text WCAG AA × Fail

Large Text (above 18pt) WCAG AAA × Fail

Any Text WCAG AAA × Fail

Black Background



This preview shows how the CIELCh color 76, 13.018, 55.101 looks on a black background.

Color Contrast Check

Large Text (above 18pt) WCAG AA ✓ Pass

Any Text WCAG AA ✓ Pass

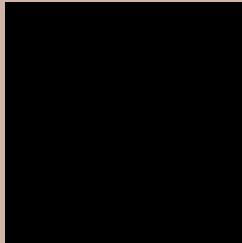
Large Text (above 18pt) WCAG AAA ✓ Pass

Any Text WCAG AAA ✓ Pass

If you want to check with other color combinations, try the [Color Contrast Checker](#).

CIELCh 76, 13.018, 55.101

Background



This preview shows how black text looks on a background with the CIELCh color 76, 13.018, 55.101.



This preview shows how white text looks on a background with the CIELCh color 76, 13.018, 55.101.

Color Blindness Simulation

Color vision deficiency is a very complex topic, and I could not describe the different causes any better than Wikipedia does, so if you want to learn more, you should check out their [article about color blindness](#).

Dichromacy



Original Color

76, 13.018, 55.101

Protanopia

76, 9.101, 89.575

Deuteranopia

76, 14.436, 48.949



Tritanopia
76, 14.782, 350.167

Trichromacy



Original Color
76, 13.018, 55.101

Protanomaly
76, 9.927, 73.556

Deuteranomaly
76, 14.084, 49.717

Tritanomaly
76, 12.368, 10.476

Monochromacy



Original Color
76, 13.018, 55.101

Achromatopsia
77, 0.009, 296.813

Achromatomaly
76, 4.618, 54.994

CSS Examples

Text

The CSS property to change the color of the text to CIELCh 76, 13.018, 55.101 is called "color". The color property can be set on classes, ids or directly on the HTML element.

This example shows how text in the color `rgb(209, 182, 168)` looks like.

```
.text, #text, p{  
    color:rgb(209, 182, 168)  
}
```

If you want to add a text shadow in that color use the text-shadow property, you can generate a text shadow directly with our [CSS Text Shadow Generator](#).

Here you see how black text with a 4 pixel rgb(209, 182, 168) colored shadow looks like.

```
.shadow{ text-shadow: 4px 4px 2px rgb(209, 182, 168) }
```

Border

The CSS property to change the border of an element to CIELCh 76, 13.018, 55.101 is called "border". The border property can be set on classes, ids or directly on the HTML element.

This example shows the color as border, it can be applied via the CSS property "border" or "border-color".

```
.border, #border, table{ border:4px solid rgb(209, 182, 168) }
```

If only the border color should be changed use the property `border-color`.

```
.border{ border-color:rgb(209, 182, 168) }
```

If you want to add a box shadow in that color use:

Here you see how a box with a 4 pixel `rgb(209, 182, 168)` colored shadow looks like.

```
.boxshadow{ -moz-box-shadow:4px 4px 4px  
4px rgb(209, 182, 168); -webkit-box-  
shadow:4px 4px 4px 4px rgb(209, 182, 168);  
box-shadow:4px 4px 4px 4px rgb(209, 182,  
168) }
```

Background

The CSS property to change the background color of an element to CIELCh 76, 13.018, 55.101 is called "background". The background property can be set on classes, ids or directly on the HTML element.

```
.background, #background, body{  
background: rgb(209, 182, 168) }
```

If only the background color should be changed can be used:

```
.background{ background-color: rgb(209,  
182, 168) }
```

This example shows the color as background, it is applied via the CSS property "background".

To optimize and compress your CSS code, you can use our [online CSS compressor and optimizer](#) based on csstidy. If you want to create a linear or radial gradient as background or border, check our [CSS Gradient Generator](#).

Hey! You found this booklet interesting? Support Converting Colors with the new Membership Option!

The pro membership hides all ads, plus gives you double the colors in the color bucket, and more awesome pro features!

[Learn more, Memberships starting at \\$2.50/m!](#)

**Follow me
on Twitter!**

@ConvertingColor