

Converting Colors

CIELCh(76, 13.157, 70.306)

Have a look what the booklet for
CIELCh(76, 13.157, 70.306) contains.

CIELCh(76, 13.142, 70.317)	3
<i>Conversions</i>	4
<i>Details</i>	6
<i>Harmonies</i>	11
<i>Previews</i>	20
<i>Color Blindness Simulation</i>	23
<i>CSS Examples</i>	26

Color

CIELCh(76, 13.142, 70.317)

Conversions

Conversions Part 1

Format	Color
Hex	CDB8A5
RGB	205, 184, 165
RGB Percent	80%, 72%, 65%
CMY	0.1967, 0.2790, 0.3535
CMYK	0.00, 0.10, 0.20, 0.20
HSL	29°, 29%, 72%
HSV	29°, 20%, 80%
XYZ	49.0219, 49.8872, 42.5723
YIQ	188.1130, 18.6150, -1.4570

Conversions

Conversions Part 2

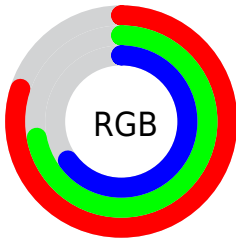
Format	Color
R _Y B	205, 201, 165
Decimal	13482149
CIE Lab	76.00, 4.43, 12.37
CIE LCh	76, 13.142, 70.317
Yxy	49.8872, 0.3465, 0.3526
Android (android.graphics.Color)	4291672229 (0xFFCDB8A5)
YUV	188.1130, -11.3947, 14.8099
Hunter-Lab	70.6309, 0.2853, 13.7050

Details

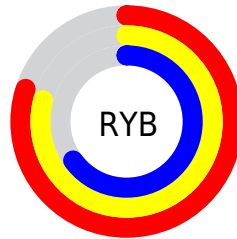
The CIELCh color $76, 13.142, 70.317$ is a light color, and the websafe version is hex `CCCCCC`. A complement of this color would be $74, 12.386, 255.415$, and the grayscale version is $76, 0.009, 296.813$.

A 20% lighter version of the original color is $95, 11.614, 80.943$, and $56, 13.103, 71.003$ is the 20% darker color. If you saturate the color by 10%, you get $73, 20.395, 69.136$, and if you desaturate by 10%, it is $79, 6.249, 71.490$.

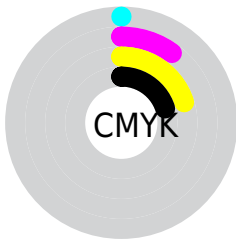
Distribution



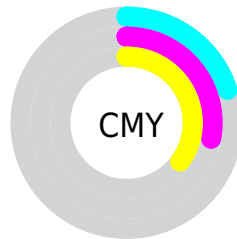
- Red (80%)
- Green (72%)
- Blue (65%)



- Red (80%)
- Yellow (79%)
- Blue (65%)



- Cyan (0%)
- Magenta (10%)
- Yellow (20%)
- Black (20%)



- Cyan (20%)
- Magenta (28%)
- Yellow (35%)

Brightness & Saturation Gradients

These gradients show how the CIELCh color 76, 13.142, 70.317 changes by changing the brightness by 10 percent. The first figure shows a shift by +10% for each color and the second figure -10%.

Similar to the brightness gradients but the following saturation gradients show a change of the CIELCh color 76, 13.142, 70.317 by changing the saturation by 10% instead.

■ 76, 13.142, 70.317

■ 76, 13.142, 70.317

■ 100, 13.142,
70.317

■ 66, 13.142, 70.317

■ 96, 13.142, 70.317

■ 56, 13.142, 70.317

■ 46, 13.142, 70.317

■ 36, 13.142, 70.317

■ 26, 13.142, 70.317

■ 16, 13.142, 70.317

■ 6, 13.142, 70.317

■ 0, 13.142, 70.317

■ 76, 13.142, 70.317

■ 76, 13.142, 70.317

73, 20.395, 69.136

79, 6.249, 71.490

70, 28.022, 67.937

83, 0.313, 253.994

67, 36.007, 66.736

86, 6.574, 253.948

64, 44.279, 65.520

89, 12.567,
255.044

61, 52.651, 64.241

92, 13.863,
239.487

58, 60.715, 62.783

56, 67.701, 60.900

95, 14.705,
212.032

54, 72.928, 58.409

97, 16.610,
198.403

54, 73.180, 58.302

Harmonies

Complementary

The Complementary color scheme is a pair of colors which are on the opposite of each other on the color wheel.



76, 13.142, 70.317



74, 12.386, 255.415

Rectangle

The Rectangle color scheme consists of four colors that form a rectangle on the color wheel.



76, 13.142, 70.317



76, 13.142, 120.317



76, 13.142, 250.317



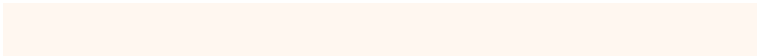
76, 13.142, 300.317

Sweetspot

The Sweet Spot groups the original color and five complimentary colors.



76, 13.142, 70.328



98, 4.660, 71.862



72, 18.946, 343.531



52, 3.097, 71.794



0, 0.000, 0.000



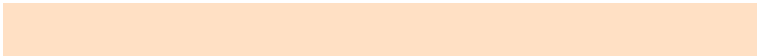
53, 0.007, 296.813

Same Dimension

The Same Dimension uses a secret algorithm to generate beautiful new colors.



76, 13.142, 70.328



91, 18.675, 69.880



81, 20.369, 106.883



41, 3.708, 71.505



44, 62.297, 58.922



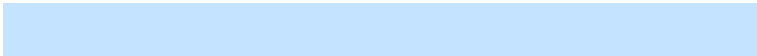
8, 14.374, 54.702

Inverse Universe

The Inverse Universe completely reimagines the original color for something new.



74, 12.386, 255.415



89, 17.374, 256.048



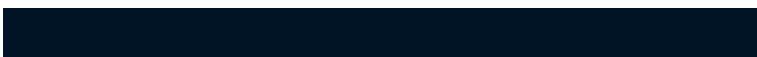
69, 21.240, 291.057



41, 3.615, 253.929



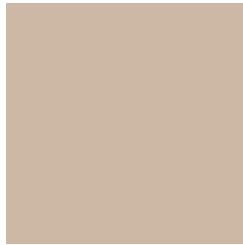
37, 49.365, 281.104



6, 14.682, 268.841

Previews

White Background



This preview shows how the CIELCh color 76, 13.142, 70.317 looks on a white background.

Color Contrast Check

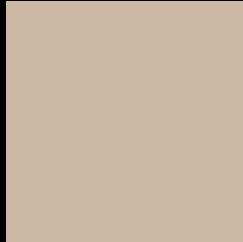
Large Text (above 18pt) WCAG AA × Fail

Any Text WCAG AA × Fail

Large Text (above 18pt) WCAG AAA × Fail

Any Text WCAG AAA × Fail

Black Background



This preview shows how the CIELCh color 76, 13.142, 70.317 looks on a black background.

Color Contrast Check

Large Text (above 18pt) WCAG AA ✓ Pass

Any Text WCAG AA ✓ Pass

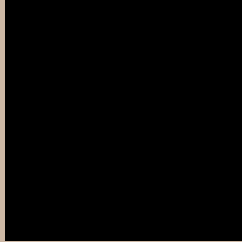
Large Text (above 18pt) WCAG AAA ✓ Pass

Any Text WCAG AAA ✓ Pass

If you want to check with other color combinations, try the [Color Contrast Checker](#).

CIELCh 76, 13.142, 70.317

Background



This preview shows how black text looks on a background with the CIELCh color 76, 13.142, 70.317.



This preview shows how white text looks on a background with the CIELCh color 76, 13.142, 70.317.

Color Blindness Simulation

Color vision deficiency is a very complex topic, and I could not describe the different causes any better than Wikipedia does, so if you want to learn more, you should check out their [article about color blindness](#).

Dichromacy



Original Color

76, 13.142, 70.317

Protanopia

76, 11.777, 91.808

Deuteranopia

76, 15.697, 53.147



Tritanopia
76, 12.867, 344.764

Trichromacy



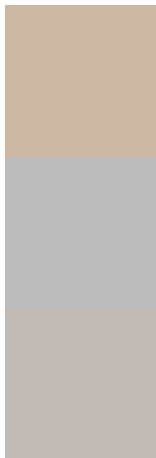
Original Color
76, 13.142, 70.317

Protanomaly
76, 11.860, 83.836

Deuteranomaly
76, 14.697, 58.178

Tritanomaly
76, 9.933, 14.012

Monochromacy



Original Color
76, 13.142, 70.317

Achromatopsia
76, 0.009, 296.813

Achromatomaly
76, 4.399, 66.438

CSS Examples

Text

The CSS property to change the color of the text to CIELCh 76, 13.142, 70.317 is called "color". The color property can be set on classes, ids or directly on the HTML element.

This example shows how text in the color `rgb(205, 184, 165)` looks like.

```
.text, #text, p{  
    color:rgb(205, 184, 165)  
}
```

If you want to add a text shadow in that color use the text-shadow property, you can generate a text shadow directly with our [CSS Text Shadow Generator](#).

Here you see how black text with a 4 pixel rgb(205, 184, 165) colored shadow looks like.

```
.shadow{ text-shadow: 4px 4px 2px rgb(205, 184, 165) }
```

Border

The CSS property to change the border of an element to CIELCh 76, 13.142, 70.317 is called "border". The border property can be set on classes, ids or directly on the HTML element.

This example shows the color as border, it can be applied via the CSS property "border" or "border-color".

```
.border, #border, table{ border:4px solid rgb(205, 184, 165) }
```

If only the border color should be changed use the property border-color.

```
.border{ border-color:rgb(205, 184, 165) }
```

If you want to add a box shadow in that color use:

Here you see how a box with a 4 pixel rgb(205, 184, 165) colored shadow looks like.

```
.boxshadow{ -moz-box-shadow:4px 4px 4px  
4px rgb(205, 184, 165); -webkit-box-  
shadow:4px 4px 4px 4px rgb(205, 184, 165);  
box-shadow:4px 4px 4px 4px rgb(205, 184,  
165) }
```

Background

The CSS property to change the background color of an element to CIELCh 76, 13.142, 70.317 is called "background". The background property can be set on classes, ids or directly on the HTML element.

```
.background, #background, body{  
background: rgb(205, 184, 165) }
```

If only the background color should be changed can be used:

```
.background{ background-color: rgb(205,  
184, 165) }
```

This example shows the color as background, it is applied via the CSS property "background".

To optimize and compress your CSS code, you can use our [online CSS compressor and optimizer](#) based on csstidy. If you want to create a linear or radial gradient as background or border, check our [CSS Gradient Generator](#).

Hey! You found this booklet interesting? Support Converting Colors with the new Membership Option!

The pro membership hides all ads, plus gives you double the colors in the color bucket, and more awesome pro features!

[Learn more, Memberships starting at \\$2.50/m!](#)

**Follow me
on Twitter!**

@ConvertingColor